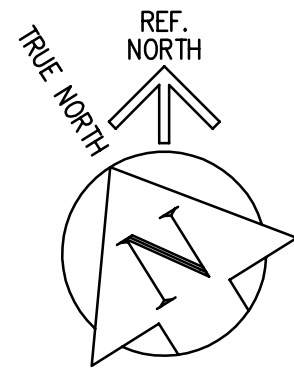



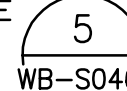
WINNIPEG WATER TREATMENT PROGRAM

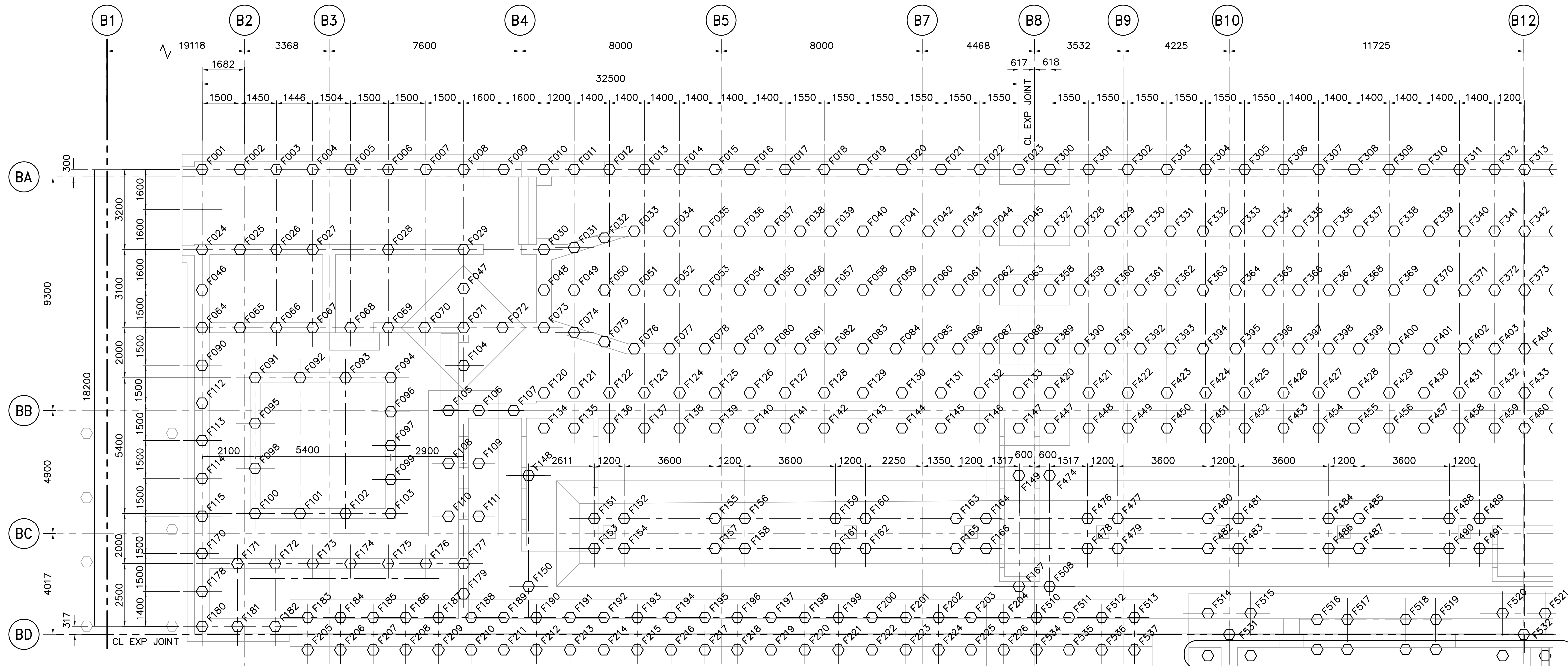


Winnipeg Water Treatment Program – Pile Driving Records for the Water Treatment Plant

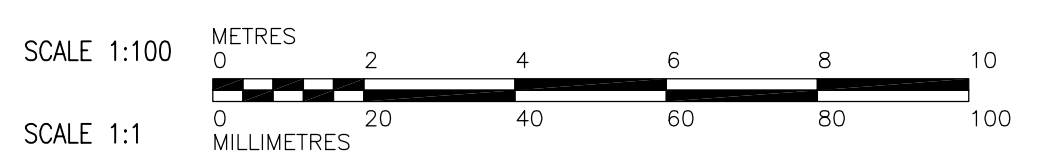
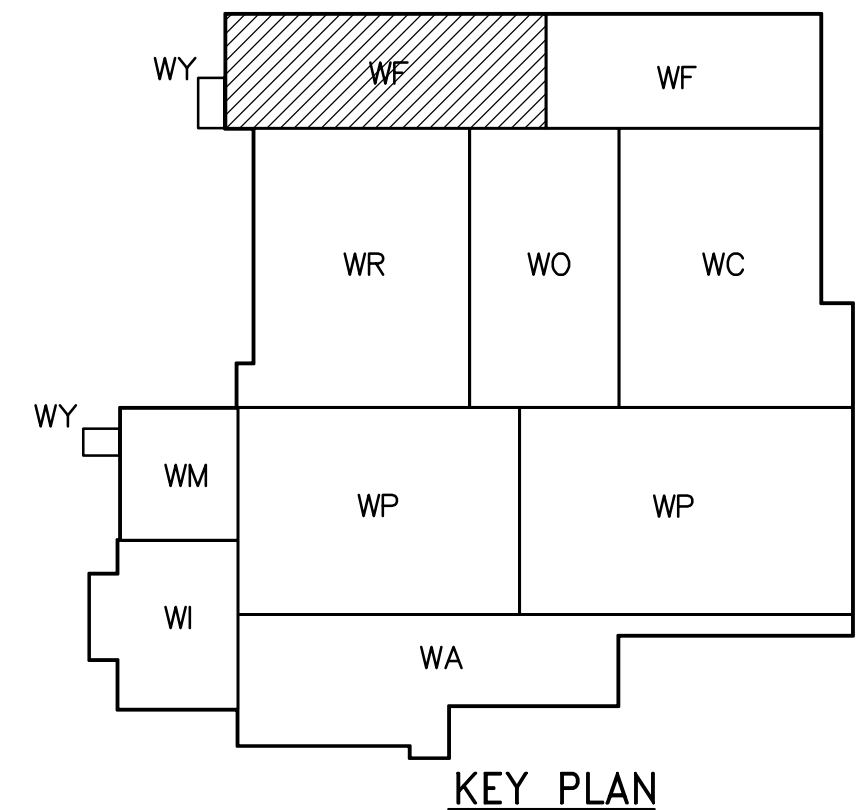
January 25, 2007







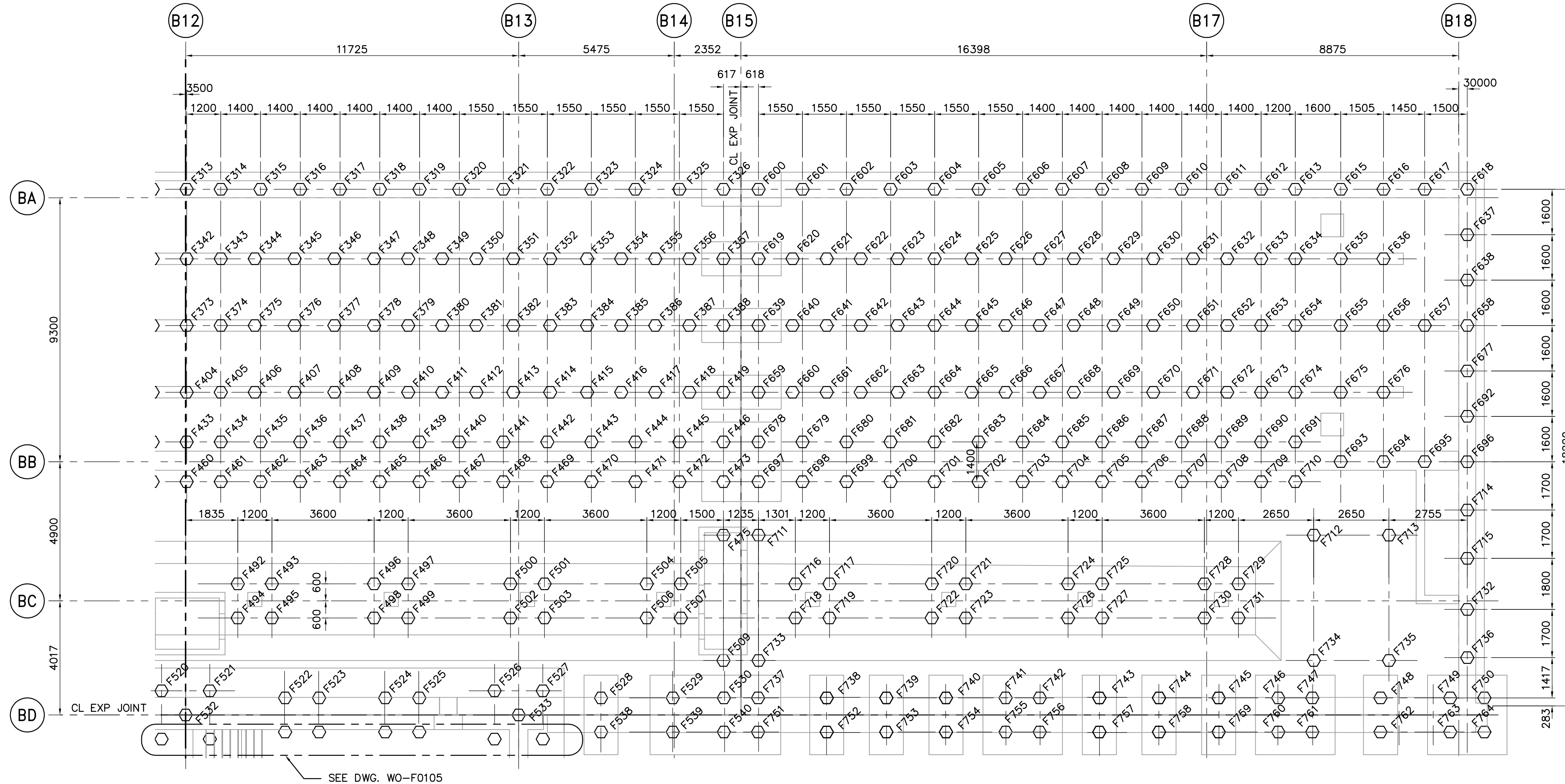
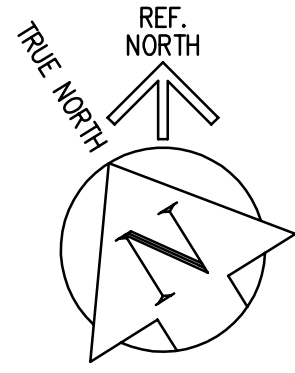
- NOTES:**
- FOR GENERAL NOTES SEE DWG WM-S9002.
 - NUMBERING OF PILES DOES NOT INDICATE SEQUENCE OF INSTALLATION.
 - ALL PILES TO BE 400Ø HEX.
 -  NOT IN CONTRACT
 - PILES WITHOUT NUMBERS ARE CALLED UP ON THE DRAWINGS FOR THE ADJACENT AREA.
 - FOR TYPICAL CAST IN-PLACE PILE EXTENSION AND CUT-OFF DETAILS SEE  WB-S0460
 - SEE PILE SCHEDULE ON DWG WF-S0505, WF-S0506, WF-S0507.



PILING PLAN
1:100

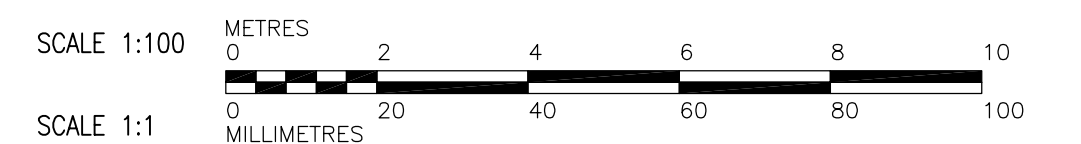
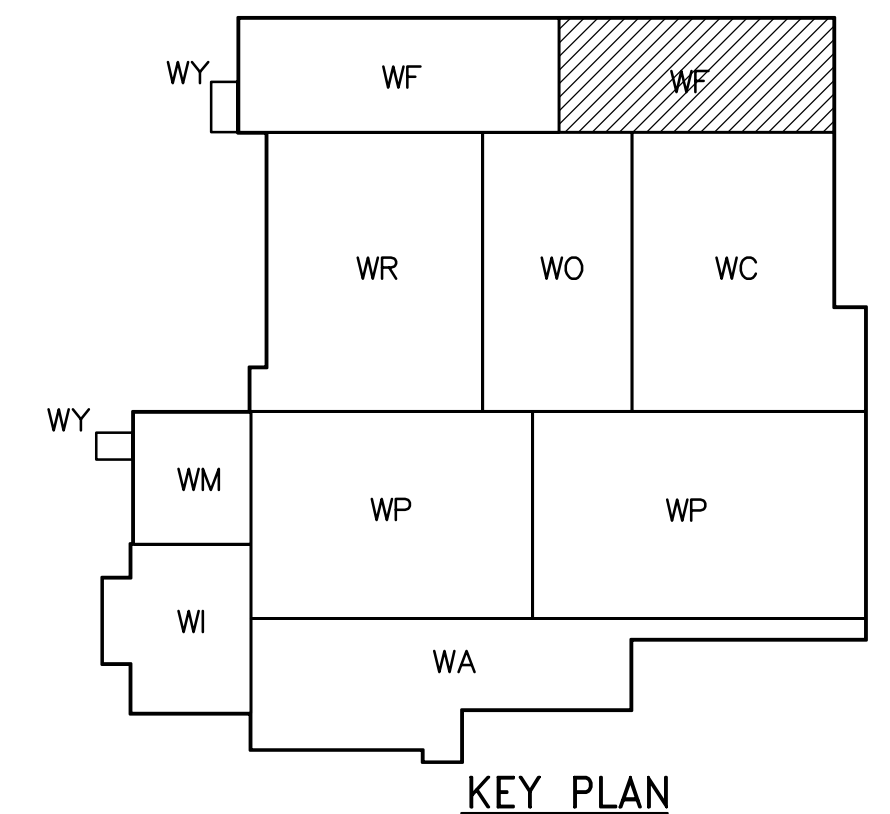


 Certificate of Authorization CH2M HILL Canada Ltd. No. 1441 Expiry: April 30, 2007	 Frederickson Cooper ARCHITECTS		 A Tyco International Ltd. Company		ENGINEER'S SEAL ORIGINAL SIGNED BY D. KRUGER 2006/02/06	 THE CITY OF WINNIPEG WATER AND WASTE DEPARTMENT ENGINEERING DIVISION WATER TREATMENT PLANT FILTRATION FOUNDATIONS AND CONCRETE STRUCTURES STRUCTURAL FILTRATION AREA 1 PILING PLAN	CITY FILE NUMBER
	DESIGNED BY: DK CHECKED BY: AP		DRAWN BY: PM APPROVED BY: DJT		SHEET OF		
	SCALE: 1:100 RELEASED FOR CONSTRUCTION BY: R. SOROKOWSKI		CONSULTANT DRAWING NO. WF-F0105		CITY DRAWING NUMBER		
	NO. REVISIONS DATE BY		DATE 2005/08/30 DATE 2006/02/08		1-0601F-B-F0105-001-0D		



PILING PLAN
1:100

- NOTES:**
- FOR GENERAL NOTES SEE DWG WM-S9002.
 - NUMBERING OF PILES DOES NOT INDICATE SEQUENCE OF INSTALLATION.
 - ALL PILES TO BE 400Ø HEX.
 - NOT IN CONTRACT
 - PILES WITHOUT NUMBERS ARE CALLED UP ON THE DRAWINGS FOR THE ADJACENT AREA.
 - FOR TYPICAL CAST IN-PLACE PILE EXTENSION AND CUT-OFF DETAILS SEE WB-S0460
 - SEE PILE SCHEDULE ON DWG WF-S0505, WF-S0506, WF-S0507.



 Certificate of Authorization CH2M HILL Canada Ltd. No. 1441 Expiry: April 30, 2007	 Frederickson Cooper ARCHITECTS		 A Tyco International Ltd. Company		ENGINEER'S SEAL ORIGINAL SIGNED BY D. KRUGER 2006/02/06	 THE CITY OF WINNIPEG WATER AND WASTE DEPARTMENT ENGINEERING DIVISION WATER TREATMENT PLANT FILTRATION FOUNDATION AND CONCRETE STRUCTURES STRUCTURAL FILTRATION AREA 2 PILING PLAN	CITY FILE NUMBER
	DESIGNED BY: DK	CHECKED BY: AP	CONSULTANT DRAWING NO. WF-F0106		SHEET OF		
	DRAWN BY: PM	APPROVED BY: DJT	RELEASED FOR CONSTRUCTION BY: R. SOROKOWSKI		CITY DRAWING NUMBER		
	SCALE: 1:100	DATE: 2005/08/30	DATE: 2006/02/08		1-0601F-B-F0106-001-0D		

The City of Winnipeg – Water Treatment Plant

PILE NUMBER	PILE LENGTH	DEPTH PREBORED	FINAL TOP ELEV.	FINAL TIP ELEV.	DES. CUTOFF ELEV.	ACT CUTOFF ELEV.	PILE PLUMBNESS	FINAL SET (mm)			Manufacturers Markings R = Re-Driven
								1 ST SET	2 ND SET	3 RD SET	
F8	17	12	233.055	216.055	230.475			24	20	18	10-05-06, L1
7	17	12	233.164	216.164	230.475			20	16	12	08-05-06, L2
6	17	12	231.374	214.374	230.475			24	20	22	08-05-06, L2
5	17	12	234.446	217.446	230.475			18	16	4	05-08-06, L2
4	17	12	230.446	213.446	230.475			8	6	6	08-06-06, L1
3	17	12	233.927	216.927	230.475			18	16	15	08-05-06, L2
2	17	12	232.740	215.740	230.475			22	18	15	08-05-06, L1
1	17	12	232.267	215.267	230.475			24	12	8	08-05-06, L1
9	17	12	233.144	216.144	230.475			23	20	22	06-05-06, L1
10	17	12	232.996	215.996	230.475			20	18	18	06-05-06, L1

Pile #:

Comments:

The City of Winnipeg – Water Treatment Plant

PILE NUMBER	PILE LENGTH	DEPTH PREBORED	FINAL TOP ELEV.	FINAL TIP ELEV.	DES. CUTOFF ELEV.	ACT CUTOFF ELEV.	PILE PLUMBNESS	FINAL SET (mm)			Manufacturers Markings R = Re-Driven
								1 ST SET	2 ND SET	3 RD SET	
F11	17	12	233.627	216.627	230.475			24	20	17	06-05-06, L1
12	17	12	233.626	216.626	230.475			24	18	13	06-05-06, L1
F13	17	12	233.238	216.238	230.475			24	12	5	03-05-06, L2
F14	17	12	233.649	216.649	230.475			21	17	11	09-05-06, L2
F15	17	12	233.663	216.663	230.475			20	16	12	05-08-06, L2
F16	17	12	233.758	216.758	230.475			23	20	20	05-08-06, L2

Pile #:

Comments:



A Tyco International Ltd. Company

PILE DRIVING RECORDS - DATE: July.12/2006

The City of Winniepeg – Water Treatment Plant

PILE NUMBER	PILE LENGTH	DEPTH PREBORED	FINAL TOP ELEV.	FINAL TIP ELEV.	DES. CUTOFF ELEV.	ACT CUTOFF ELEV.	PILE PLUMBNESS	FINAL SET (mm)			Manufacturers Markings R = Re-Driven
								1 ST SET	2 ND SET	3 RD SET	
F17	17	12	233.692	216.692	230.475			23	20	18	06-05-06, L1
F18	17	12	233.720	216.720	230.475			22	21	17	06-05-06, L1
F19	17	12	233.733	216.733	230.475			21	19	16	06-05-06, L1
F20	17	12	233.667	216.667	230.475			23	19	17	06-05-06, L1
F21	17	12	233.968	216.968	230.475			21	17	15	06-05-06, L1
F22	17	12	233.048	217.048	230.475			20	21	17	06-05-06, L1
F95	17	12	233.308	216.308	230.475			24	22	20	06-05-06, L1
F91	17	12	232.554	215.554	230.475			20	18	9	06-05-06, L2
F65	17	12	232.484	215.484	230.475			23	15	8	06-05-06, L1
F25	17	12	232.754	215.754	230.475			20	17	12	07-05-06, L2
F24	17	12	231.064	214.064	230.475			18	12	6	07-05-06, L2
F64	17	12	232.335	215.335	230.475			23	19	15	07-05-06, L2

Pile #:

Comments:

The City of Winnipeg – Water Treatment Plant

PILE NUMBER	PILE LENGTH	DEPTH PREBORED	FINAL TOP ELEV.	FINAL TIP ELEV.	DES. CUTOFF ELEV.	ACT CUTOFF ELEV.	PILE PLUMBNESS	FINAL SET (mm)			Manufacturers Markings R = Re-Driven
								1 ST SET	2 ND SET	3 RD SET	
F90	17	12	232.430	215.403	230.475			21	15	12	06-05-06, L2
F112	17	12	232.215	215.215	230.475			10	6	6	07-05-06, L2
F113	17	12	232.690	215.690	230.475			20	12	14	07-05-06, L2
F14	17	12	232.897	215.897	230.475			16	8	6	16-05-06, L2
F15	17	12	233.258	216.258	230.475			24	16	12	16-05-06, L2
F170	17	12	233.026	216.026	230.475			23	18	16	16-05-06, L2
F178	17	12	233.589	216.589	230.475			18	10	8	16-05-06, L2
F180	17	12	233.574	216.574	230.475			20	10	6	17-05-06, L2
F98	17	12	233.038	216.038	230.475			18	10	6	18-05-06, L2
F100	17	12	233.307	216.307	230.475			21	18	18	18-05-06, L2
F171	17	12	233.693	216.693	230.475			12	8	4	17-05-06, L1
F181	17	12	233.454	216.454	230.475			15	10	6	17-05-06, L1

Pile #:

Comments:



A Tyco International Ltd. Company

PILE DRIVING RECORDS - DATE: July.13/2006

The City of Winnipeg – Water Treatment Plant

PILE NUMBER	PILE LENGTH	DEPTH PREBORED	FINAL TOP ELEV.	FINAL TIP ELEV.	DES. CUTOFF ELEV.	ACT CUTOFF ELEV.	PILE PLUMBNESS	FINAL SET (mm)			Manufacturers Markings R = Re-Driven
								1 ST SET	2 ND SET	3 RD SET	
F206	15	12	231.667	216.667	229.875			20	5	3	05-06-06, L2
F205	15	12	231.477	216.477	229.875			21	17	13	05-06-06, L2
F187	14	12	230.724	216.724	229.875			20	16	14	08-09-05, L2
186	14	12	230.611	216.611	229.875			3	n/a	n/a	28-04-05, L2
185	14	12	230.576	216.576	229.875			21	17	11	28-04-05, L2
208	15	12	231.710	216.710	229.875			17	5	3	03-06-06, L1
207	15	12	231.700	216.700	229.875			20	15	11	05-06-06, L1

Pile #:

Comments:

The City of Winnipeg – Water Treatment Plant

PILE NUMBER	PILE LENGTH	DEPTH PREBORED	FINAL TOP ELEV.	FINAL TIP ELEV.	DES. CUTOFF ELEV.	ACT CUTOFF ELEV.	PILE PLUMBNESS	FINAL SET (mm)			Manufacturers Markings R = Re-Driven
								1 ST SET	2 ND SET	3 RD SET	
F102	17	12	233.663	216.663	230.475			6	6	4	19-05-06, L1
101	17	12	233.492	216.492	230.475			20	18	12	16-05-06, L1
173	17	12	233.682	216.682	230.475			18	20	16	16-05-06, L2
172	17	12	233.710	216.710	230.475			8	6	4	16-05-06, L2
184	14	12	230.479	216.479	229.875			6	3	2	29-09-05, L2
183	14	12	230.560	216.560	229.875			24	20	21	29-09-05, L2
182	17	12	233.594	216.594	230.475			15	10	8	16-05-06, L2
93	17	12	232.806	215.806	230.475			23	20	21	16-05-06, L2
67	17	12	232.685	215.685	230.475			20	15	12	16-05-06, L2
92	17	12	232.763	215.763	230.475			23	22	20	16-05-06, L2

Pile #:

Comments:

The City of Winnipeg – Water Treatment Plant

PILE NUMBER	PILE LENGTH	DEPTH PREBORED	FINAL TOP ELEV.	FINAL TIP ELEV.	DES. CUTOFF ELEV.	ACT CUTOFF ELEV.	PILE PLUMBNESS	FINAL SET (mm)			Manufacturers Markings R = Re-Driven
								1 ST SET	2 ND SET	3 RD SET	
F27	17	12	232.959	215.959	230.475			23	18	18	18-05-06, L1
F66	17	12	232.859	215.859	230.475			12	8	5	18-05-06, L1
F26	17	12	233.090	216.090	230.475			22	18	8	19-05-06, L2
210	15	12	231.730	216.730	229.875			6	2	n/a	01-06-06, L1
209	15	12	231.701	216.701	229.875			4	n/a	n/a	01-06-06, L1
190	14	12	230.862	216.862	229.875			20	12	9	02-10-05, L2
189	14	12	230.856	216.856	229.875			23	18	9	0-10-06, L2
188	14	12	230.731	216.731	229.875			12	6	5	08-09-05, L2
211	15	12	231.855	217.855	229.875			19	12	6	02-06-06, L2
212	15	12	231.965	217.965	229.875			21	15	8	02-06-06, L2

Pile #:

Comments:

The City of Winnipeg – Water Treatment Plant

PILE NUMBER	PILE LENGTH	DEPTH PREBORED	FINAL TOP ELEV.	FINAL TIP ELEV.	DES. CUTOFF ELEV.	ACT CUTOFF ELEV.	PILE PLUMBNESS	FINAL SET (mm)			Manufacturers Markings R = Re-Driven
								1 ST SET	2 ND SET	3 RD SET	
F176	17	12	233.546	216.546	230.475			20	18	6	15-05-06, L1
103	17	12	233.416	216.416	230.475			20	12	10	15-05-06, L2
99	17	12	233.498	216.498	230.475			18	15	8	15-05-06, L2
97	17	12	233.176	216.176	230.475			24	20	20	15-05-06, L2
175	17	12	233.708	216.708	230.475			19	12	15	15-05-06, L2
174	17	12	233.866	216.866	230.475			24	20	20	15-05-06, L2
191	14	12	230.790	216.790	230.475			23	18	16	03-10-05, L2
192	17	12	230.945	216.945	230.475			24	23	18	02-10-05, L2
96	17	12	233.134	216.134	230.475			20	20	16	06-05-06, L1
94	17	12	232.921	215.921	230.475			24	18	20	06-05-06, L1
F68	17	12	232.641	215.641	230.475			24	23	20	06-05-06, L1

Pile #:

Comments:



A Tyco International Ltd. Company

PILE DRIVING RECORDS - DATE: July.17/2006

The City of Winnipeg – Water Treatment Plant

PILE NUMBER	PILE LENGTH	DEPTH PREBORED	FINAL TOP ELEV.	FINAL TIP ELEV.	DES. CUTOFF ELEV.	ACT CUTOFF ELEV.	PILE PLUMBNESS	FINAL SET (mm)			Manufacturers Markings R = Re-Driven
								1 ST SET	2 ND SET	3 RD SET	
F28	17	12	232.226	215.226	230.475			20	18	12	15-05-06, L1
F69	17	12	229.380	212.380	230.475			23	20	18	15-05-06, L1
F213	15	12	231.932	216.932	229.875			21	17	14	02-06-06, L1
F214	15	12	231.907	216.907	229.875			20	14	12	02-06-06, L1
F215	15	12	231.964	216.964	229.875			23	20	18	02-06-06, L1
F216	15	12	231.975	216.975	229.875			23	20	20	02-06-06, L1
F194	14	12	230.952	216.952	229.875			23	20	20	11-07-06, L2
F193	14	12	230.958	216.958	229.875			22	15	12	11-07-06, L2
F150	17	12	233.887	216.887	230.475			23	12	10	12-06-05, L2
F177	17	12	233.618	216.618	230.475			6	4	3	12-06-05, L2

Pile #:

Comments:

- # F69

Chaser Needed

The City of Winnipeg – Water Treatment Plant

PILE NUMBER	PILE LENGTH	DEPTH PREBORED	FINAL TOP ELEV.	FINAL TIP ELEV.	DES. CUTOFF ELEV.	ACT CUTOFF ELEV.	PILE PLUMBNESS	FINAL SET (mm)			Manufacturers Markings R = Re-Driven
								1 ST SET	2 ND SET	3 RD SET	
F179	17	12	228.932	211.932	230.475			20	23	18	12-06-05, L2
F111	14	12	230.655	216.655	229.675			20	17	6	29-09-05, L2
F110	14	12	230.585	216.585	229.675			10	8	4	30-09-05, L2
F109	14	12	230.569	216.569	229.675			12	6	5	12-07-06, L2
F108	14	12	230.587	216.587	229.675			15	13	9	01-10-06, L2
F106	14	12	230.432	216.432	229.675			23	20	20	29-09-05, L2
F104	14	12	228.542	214.542	229.675			17	15	4	11-07-06, L2
F105	14	12	230.645	216.645	229.675			17	12	10	28-09-05, L2
F72	14	12	230.869	216.869	229.675			24	22	22	28-09-05, L2
F71	14	12	230.322	216.322	229.675			23	20	22	28-09-05, L2
F47	14	12	230.496	216.496	229.675			20	16	10	29-09-05, L2
F29	17	12	233.792	216.792	229.675			20	18	18	15-05-06, L1
F70	14	12	230.157	216.157	229.675			23	20	22	01-10-05, L2

Pile #:

- #F179, F104

Comments:

Chaser needed

The City of Winnipeg – Water Treatment Plant

PILE NUMBER	PILE LENGTH	DEPTH PREBORED	FINAL TOP ELEV.	FINAL TIP ELEV.	DES. CUTOFF ELEV.	ACT CUTOFF ELEV.	PILE PLUMBNESS	FINAL SET (mm)			Manufacturers Markings R = Re-Driven
								1 ST SET	2 ND SET	3 RD SET	
195	14	12	230.810	216.810	229.875		Y	23	20	16	11-07-06, L2
196	14	12	230.865	216.865	229.875		Y	23	23	21	12-07-06, L2
197	14	12	230.380	216.380	229.875		Y	20	16	10	11-07-06, L2
198	14	12	230.341	216.341	229.875		Y	24	20	18	11-07-06, L2
199	14	12	230.700	216.700	229.875		Y	20	6	8	11-07-06, L2
220	15	12	231.667	216.667	229.875		Y	23	18	20	30-05-06, L2
219	15	12	231.576	216.576	229.875		Y	18	20	15	30-05-06, L2
218	15	12	231.868	216.868	229.875		Y	22	15	15	02-06-06, L2
217	15	12	232.026	217.026	229.875		Y	16	6	8	02-06-06, L2
148	17	12			230.475		Y	20	10	5	11-05-06, L2

Pile #:

Comments:

The City of Winnipeg – Water Treatment Plant

PILE NUMBER	PILE LENGTH	DEPTH PREBORED	FINAL TOP ELEV.	FINAL TIP ELEV.	DES. CUTOFF ELEV.	ACT CUTOFF ELEV.	PILE PLUMBNESS	FINAL SET (mm)			Manufacturers Markings R = Re-Driven
								1 ST SET	2 ND SET	3 RD SET	
135	17	12	233.176	216.176	230.475		Y	22	18	12	27-09-05, L1
121	17	12	234.351	217.351	230.475		Y	23	20	22	11-05-06, L2
120	17	12	234.206	217.206	230.475		Y	15	10	8	11-05-06, L2
134	17	12	234.314	217.314	230.475		Y	16	9	9	11-05-06, L2
107	17	12	234.186	217.186	230.475		Y	18	12	12	11-05-06, L2
49	17	12	234.501	217.501	230.475		N 2%	8	6	6	10-05-06, L2
74	17	12	234.177	217.177	230.475		Y	16	16	12	10-05-06, L2
73	17	12	234.182	217.182	230.475		Y	12	8	8	10-05-06, L2
48	17	12	234.353	217.353	230.475		Y	22	14	10	10-05-06, L2
31	17	12	233.675	216.675	230.475		Y	23	15	8	10-05-06, L2
30	17	12	234.450	217.450	230.475		Y	21	12	9	10-05-06, L2

Pile #:

Comments:

The City of Winnipeg – Water Treatment Plant

PILE NUMBER	PILE LENGTH	DEPTH PREBORED	FINAL TOP ELEV.	FINAL TIP ELEV.	DES. CUTOFF ELEV.	ACT CUTOFF ELEV.	PILE PLUMBNESS	FINAL SET (mm)			Manufacturers Markings R = Re-Driven
								1 ST SET	2 ND SET	3 RD SET	
152	14	12	231.034	217.034	229.875		Y	23	19	12	11-07-05, L2
151	14	12	231.815	217.815	229.875		Y	18	13	7	11-07-05, L2
153	14	12	230.910	216.910	229.875		Y	19	14	9	11-07-05, L2
154	14	12	230.989	216.989	229.875		Y	17	9	6	11-07-05, L2
137	17	12	233.918	216.918	230.475		Y	19	13	7	07-05-06, L1
123	17	12	233.962	216.962	230.475		Y	19	11	5	07-05-06, L1
76	17	12	233.693	216.663	230.475		Y	23	13	12	07-05-06, L1
51	17	12	234.083	217.083	230.475		2%	23	17	9	05-05-06, L2
75	17	12	234.289	217.289	230.475		Y	19	11	5	07-05-06, L1
122	17	12	234.512	217.512	230.475		Y	18	9	4	07-05-06, L1
33	17	12	233.614	216.614	230.475		Y	22	17	12	05-05-06, L2
32	17	12	233.906	216.906	230.475		Y	19	15	11	05-05-06, L2
50	17	12	234.049	217.049	230.475		Y	21	16	9	05-05-06, L2
136	17	12	233.547	216.547	230.475		Y	23	18	18	05-05-06, L2

Pile #:

Comments:

The City of Winnipeg – Water Treatment Plant

PILE NUMBER	PILE LENGTH	DEPTH PREBORED	FINAL TOP ELEV.	FINAL TIP ELEV.	DES. CUTOFF ELEV.	ACT CUTOFF ELEV.	PILE PLUMBNESS	FINAL SET (mm)			Manufacturers Markings R = Re-Driven
								1 ST SET	2 ND SET	3 RD SET	
155	14	12	231.002	217.002	229.875		Y	21	18	12	11-07-06, L2
156	14	12	231.055	217.055	229.875		Y	15	11	21	11-07-06, L2
158	14	12	231.017	217.017	229.875		Y	21	16	8	10-07-06, L2
157	14	12	230.966	217.966	229.875		Y	10	8	8	10-07-06, L2
138	17	12	234.087	217.087	230.475		Y	22	16	10	19-06-06, L2
124	17	12	234.039	217.039	230.475		Y	23	18	12	04-05-06, L2
77	17	12	233.964	216.964	230.475		Y	23	20	21	04-05-06, L2
53	17	12	233.858	216.858	230.475		N 1%	22	18	10	04-05-06, L2
35	17	12	233.805	216.805	230.475		Y	18	12	6	04-05-06, L2
52	17	12	233.853	216.853	230.475		Y	17	8	8	07-05-06, L2

Pile #:

Comments:

The City of Winnipeg – Water Treatment Plant

PILE NUMBER	PILE LENGTH	DEPTH PREBORED	FINAL TOP ELEV.	FINAL TIP ELEV.	DES. CUTOFF ELEV.	ACT CUTOFF ELEV.	PILE PLUMBNESS	FINAL SET (mm)			Manufacturers Markings R = Re-Driven
								1 ST SET	2 ND SET	3 RD SET	
34	17	12	233.627	216.627	230.475		Y	21	17	13	07-05-06, L2
78	17	12	231.790	214.790	230.475		Y	22	20	20	04-05-06, L1
125	17	12	234.297	217.297	230.475		Y	8	6	6	04-05-06, L1
139	17	12	234.150	217.150	230.475		Y	17	12	15	04-05-06, L1
224	15	12	231.690	216.690	230.475		Y	21	18	14	09-06-06, L1
223	15	12	231.834	216.690	230.475		Y	20	15	11	09-06-06, L1
222	15	12	231.793	216.793	230.475		Y	17	13	7	09-06-06, L1
221	15	12	231.792	216.792	230.475		E 2%	20	17	15	09-06-06, L1

Pile #:

Comments:

The City of Winnipeg – Water Treatment Plant

PILE NUMBER	PILE LENGTH	DEPTH PREBORED	FINAL TOP ELEV.	FINAL TIP ELEV.	DES. CUTOFF ELEV.	ACT CUTOFF ELEV.	PILE PLUMBNESS	FINAL SET (mm)			Manufacturers Markings R = Re-Driven
								1 ST SET	2 ND SET	3 RD SET	
127	17	12	233.810	216.810	230.475		Y	23	20	18	03-05-06, L2
80	17	12	234.172	217.172	230.475		Y	16	8	10	03-05-06, L2
79	17	12	234.028	217.028	230.475		Y	20	19	12	11-06-06, L1
126	17	12	234.209	217.209	230.475		Y	12	10	13	11-06-06, L1
141	17	12	233.859	216.859	230.475		Y	20	15	15	03-05-06, L2
140	17	12	234.123	217.123	230.475		Y	12	10	6	03-05-06, L2
37	17	12	233.683	216.683	230.475		Y	14	8	8	03-05-06, L2
55	17	12	233.762	216.762	230.475		Y	4	4	3	03-05-06, L2
36	17	12	233.696	216.696	230.475		Y	21	18	12	11-06-06, L1
54	17	12	233.808	216.808	230.475		Y	20	9	12	11-06-06, L1

Pile #:

Comments:

The City of Winnipeg – Water Treatment Plant

PILE NUMBER	PILE LENGTH	DEPTH PREBORED	FINAL TOP ELEV.	FINAL TIP ELEV.	DES. CUTOFF ELEV.	ACT CUTOFF ELEV.	PILE PLUMBNESS	FINAL SET (mm)			Manufacturers Markings R = Re-Driven
								1 ST SET	2 ND SET	3 RD SET	
38	17	12	233.764	216.764	230.475		SE 2%	9	6	6	11-06-06, L1
56	17	12	233.760	216.760	230.475		Y	8	5	3	11-06-06, L1
81	17	12	234.076	217.076	230.475		Y	10	12	8	11-06-06, L1
200	14	12	231.124	217.124	229.875		Y	23	20	24	10-07-06, L1
201	14	12	231.145	217.145	229.875		Y	12	8	4	10-07-06, L1
202	14	12	231.110	217.110	229.875		Y	12	8	4	10-07-06, L2
203	14	12	231.148	217.148	229.875		Y	8	4	6	10-07-06, L2
204	14	12	231.108	217.108	228.875		Y	13	10	4	10-07-06, L2
535	15	12	232.101	217.101	228.975		Y	23	18	18	08-07-06, L1
534	15	12	232.107	217.107	228.975		Y	20	15	12	08-07-06, L1

Pile #:

Comments:

The City of Winnipeg – Water Treatment Plant

PILE NUMBER	PILE LENGTH	DEPTH PREBORED	FINAL TOP ELEV.	FINAL TIP ELEV.	DES. CUTOFF ELEV.	ACT CUTOFF ELEV.	PILE PLUMBNESS	FINAL SET (mm)			Manufacturers Markings R = Re-Driven
								1 ST SET	2 ND SET	3 RD SET	
226	15	12	232.079	217.079	228.875		Y	21	12	6	08-07-06, L1
225	15	12	232.134	217.134	229.875		Y	18	15	9	08-07-06, L1
510	14	12	231.077	217.077	228.875		Y	8	6	6	10-07-06, L2
511	14	12	231.019	217.019	228.875		Y	12	8	6	10-07-06, L2
512	14	12	231.004	217.004	229.875		Y	22	18	10	10-07-06, L2
513	14	12	LOST				Y				10-07-06, L2
537	15	12	229.798	214.798	229.875		Y	23	16	8	08-06-06, L2
536	15	12	232.003	217.003	229.875		Y	15	12	12	08-06-06, L2

Pile #:

Comments:

The City of Winnipeg – Water Treatment Plant

PILE NUMBER	PILE LENGTH	DEPTH PREBORED	FINAL TOP ELEV.	FINAL TIP ELEV.	DES. CUTOFF ELEV.	ACT CUTOFF ELEV.	PILE PLUMBNESS	FINAL SET (mm)			Manufacturers Markings R = Re-Driven
								1 ST SET	2 ND SET	3 RD SET	
40	17	12	233.778	216.778	230.475		Y	18	15	12	09-06-06, L1
58	17	12	228.531	211.531	230.475		Y	23	20	20	03-05-06, L1
83	17	12	233.766	216.766	230.475		Y	24	22	18	08-06-06, L1
82	17	12	233.894	216.894	230.475		Y	21	17	17	08-06-06, L1
57	17	12	233.782	216.782	230.475		Y	20	15	8	08-06-06, L1
39	17	12	233.792	216.792	230.475		Y	23	18	18	09-06-06, L1
129	17	12	233.450	216.450	230.475		Y	24	22	22	08-06-06, L1
143	17	12	233.781	216.781	230.475		Y	24	20	21	08-06-06, L2

Pile #:

Comments:

- #58

Needed Chaser



A Tyco International Ltd. Company

PILE DRIVING RECORDS - DATE: July.25/2006

The City of Winnipeg – Water Treatment Plant

PILE NUMBER	PILE LENGTH	DEPTH PREBORED	FINAL TOP ELEV.	FINAL TIP ELEV.	DES. CUTOFF ELEV.	ACT CUTOFF ELEV.	PILE PLUMBNESS	FINAL SET (mm)			Manufacturers Markings R = Re-Driven
								1 ST SET	2 ND SET	3 RD SET	
128	17	12	233.942	216.942	230.475		Y	20	17	17	07-06-06, L1
142	17	12	234.114	217.942	230.475		Y	18	20	15	19-06-06, L2
160	14	12	231.043	217.043	229.875		Y	15	10	12	14-09-06, L2
159	14	12	230.800	216.800	229.875		Y	23	22	20	14-09-06, L2
162	14	12	231.053	217.053	229.875		Y	18	12	8	14-09-06, L2
161	14	12	230.627	216.627	229.875		Y	20	10	6	14-09-06, L2

Pile #:

Comments:

The City of Winnipeg – Water Treatment Plant

PILE NUMBER	PILE LENGTH	DEPTH PREBORED	FINAL TOP ELEV.	FINAL TIP ELEV.	DES. CUTOFF ELEV.	ACT CUTOFF ELEV.	PILE PLUMBNESS	FINAL SET (mm)			Manufacturers Markings R = Re-Driven
								1 ST SET	2 ND SET	3 RD SET	
42	17	12	233.932	216.932	230.475		SE 1.0%	18	18	15	07-06-06, L2
60	17	12	233.928	216.932	230.475		Y	8	6	10	07-06-06, L2
85	17	12	234.007	217.007	230.475		Y	20	16	10	07-06-06, L2
131	17	12	234.190	217.190	230.475		Y	8	4	4	06-06-06, L1
145	17	12	234.159	217.159	230.475		Y	5	2	n/a	06-06-06, L1
144	17	12	234.300	217.215	230.475		Y	8	4	3	06-06-06, L1
130	17	12	234.000	217.300	230.475		Y	12	6	4	06-06-06, L1
84	17	12	233.839	216.839	230.475		Y	16	16	8	07-06-06, L1
59	17	12	233.443	216.839	230.475		Y	24	20	20	07-06-06, L2
41	17	12	233.936	216.839	230.475		Y	18	12	12	07-06-06, L2

Pile #:

Comments:

The City of Winnipeg – Water Treatment Plant

PILE NUMBER	PILE LENGTH	DEPTH PREBORED	FINAL TOP ELEV.	FINAL TIP ELEV.	DES. CUTOFF ELEV.	ACT CUTOFF ELEV.	PILE PLUMBNESS	FINAL SET (mm)			Manufacturers Markings R = Re-Driven
								1 ST SET	2 ND SET	3 RD SET	
163	14	12	231.184	217.184	229.875			6	2	n/a	12-07-06, L2
164	14	12	231.089	217.089	229.875			12	12	8	12-07-06, L2
166	14	12	231.147	217.147	229.875			4	n/a	n/a	12-07-06, L2
165	14	12	231.153	217.153	229.875			15	10	8	12-07-06, L2
43	17	12	233.923	216.923	230.475		SE 2%	6	4	2	06-06-06,L1
61	17	12	233.996	216.996	230.475			4	n/a	n/a	06-06-06,L1
86	17	12	234.128	217.128	230.475			5	3	n/a	06-06-06,L1
513a	17	12	234.418	217.418	229.875			18	20	15	08-06-06, L2

Pile #:

Comments:

- #163, 166, 61, 86
- Pile 513a 0.400 East of Lost piles face.

Stopped on Boulder

The City of Winnipeg – Water Treatment Plant

PILE NUMBER	PILE LENGTH	DEPTH PREBORED	FINAL TOP ELEV.	FINAL TIP ELEV.	DES. CUTOFF ELEV.	ACT CUTOFF ELEV.	PILE PLUMBNESS	FINAL SET (mm)			Manufacturers Markings R = Re-Driven
								1 ST SET	2 ND SET	3 RD SET	
301	17	12	233.873	216.873	230.475		Y	18	15	15	06-06-06, L1
23	15	12	232.132	217.132	229.750		Y	20	10	12	07-06-06, L1
45	14	12	232.300	218.300	229.750		NE 2.0%	20	12	4	13-07-06, L2
63	14	12	232.312	218.312	229.750		Y	22	17	15	12-07-06, L2
88	14	12	232.295	218.295	229.750		Y	22	17	15	12-07-06, L2
133	14	12	232.108	218.108	229.750		SE 2%	18	18	12	13-07-06, L2
147	14	12	231.254	217.254	229.750		Y	8	12	6	13-07-06, L2
149	17	12	233.220	216.220	230.475		Y	20	18	14	06-06-06, L1
146	17	12	234.192	217.192	230.475		Y	4	2	2	06-06-06, L1
132	17	12	234.182	217.182	230.475		Y	6	4	6	06-06-06, L1
87	17	12	234.428	217.428	230.475		Y	14	20	20	07-06-06, L1
62	17	12	233.918	216.918	230.475		Y	10	7	3	07-06-06, L1
44	17	12	234.051	217.051	230.475		S 1.5%	18	8	10	07-06-06, L1

Pile #:

Comments:

The City of Winnipeg – Water Treatment Plant

PILE NUMBER	PILE LENGTH	DEPTH PREBORED	FINAL TOP ELEV.	FINAL TIP ELEV.	DES. CUTOFF ELEV.	ACT CUTOFF ELEV.	PILE PLUMBNESS	FINAL SET (mm)			Manufacturers Markings R = Re-Driven
								1 ST SET	2 ND SET	3 RD SET	
328	17	12	233.981	216.981	230.475		Y	23	20	18	06-06-06, L1
359	17	12	234.210	217.210	230.475		SE .5%	18	12	10	06-06-06, L1
390	17	12	234.099	217.099	230.475		Y	20	20	17	06-06-06, L1
421	17	12	234.157	217.157	230.475		Y	12	10	10	06-06-06, L1
420	15	12	232.163	217.163	229.750		Y	23	19	14	14-07-06, L1
389	15	12	231.710	216.710	229.750		Y	6	4	4	14-07-06, L1
358	15	12	232.209	212.209	229.750		Y	8	6	6	14-07-06, L1
327	15	12	232.009	217.009	229.750		SE 2%	12	8	10	14-07-06, L1
300	15	12	232.017	217.017	229.750		Y	20	20	12	14-07-06, L1
447	15	12	232.124	217.124	229.750		Y	12	6	4	14-07-06, L1

Pile #:

Comments:

The City of Winnipeg – Water Treatment Plant

PILE NUMBER	PILE LENGTH	DEPTH PREBORED	FINAL TOP ELEV.	FINAL TIP ELEV.	DES. CUTOFF ELEV.	ACT CUTOFF ELEV.	PILE PLUMBNESS	FINAL SET (mm)			Manufacturers Markings R = Re-Driven
								1 ST SET	2 ND SET	3 RD SET	
474	17	12	233.229	216.229	230.475		Y	20	15	12	06-06-06, L1
476	14	12	231.049	217.049	229.875		Y	23	20	20	12-07-06, L2
477	14	12	231.176	217.176	229.875		Y	20	18	16	12-07-06, L2
479	14	12	231.219	217.219	229.875		Y	8	6	6	12-07-06, L2
478	17	12	234.020	217.020	230.475		Y	12	4	2	12-07-06, L2
448	17	12	234.020	217.020	230.475		Y	16	13	10	06-06-06, L1
508	17	12	233.220	216.220	230.475		Y	8	12	10	08-06-06, L1
167	17	12	234.019	217.019	230.475		Y	18	12	14	06-06-06, L1

Pile #:

Comments:

The City of Winnipeg – Water Treatment Plant

PILE NUMBER	PILE LENGTH	DEPTH PREBORED	FINAL TOP ELEV.	FINAL TIP ELEV.	DES. CUTOFF ELEV.	ACT CUTOFF ELEV.	PILE PLUMBNESS	FINAL SET (mm)			Manufacturers Markings R = Re-Driven
								1 ST SET	2 ND SET	3 RD SET	
304	17	12	233.689	216.689	230.475		SE 2%	20	18	18	19-06-06, L2
303	17	12	233.655	216.655	230.475		SE .5%	18	12	10	18-06-06, L2
331	17	12	LOST		230.475		Y				18-06-06, L2
362	17	12	233.587	216.587	230.475		Y	18	20	15	18-06-06, L2
330	17	12	233.427	216.427	230.475		Y	4	2	n/a	05-06-06, L2
361	17	12	233.671	216.671	230.475		Y	6	4	4	05-06-06, L2
329	17	12	231.182	214.182	230.475		Y	15	15	18	05-06-06, L2
360	17	12	230.590	213.590	230.475		Y	10	6	4	05-06-06, L2
391	17	12	234.203	217.203	230.475		Y	12	10	10	05-06-06, L2
392	17	12	231.252	214.252	230.475		Y	18	10	8	05-06-06, L2

Pile #:

Comments:

 - #331
 - #330

 Chaser Needed, LOST
 Stopped on Boulder

The City of Winnipeg – Water Treatment Plant

PILE NUMBER	PILE LENGTH	DEPTH PREBORED	FINAL TOP ELEV.	FINAL TIP ELEV.	DES. CUTOFF ELEV.	ACT CUTOFF ELEV.	PILE PLUMBNESS	FINAL SET (mm)			Manufacturers Markings R = Re-Driven
								1 ST SET	2 ND SET	3 RD SET	
393	17	12	233.571	216.571	230.475		Y	18	20	12	05-06-06, L1
423	17	12	233.976	216.976	230.475		Y	23	22	20	05-06-06, L1
422	17	12	234.118	217.118	230.475		Y	18	12	12	05-06-06, L1
450	17	12	233.975	216.975	230.475		E 1.5%	24	23	20	05-06-06, L2
449	17	12	234.196	217.196	230.475		Y	20	20	15	05-06-06, L2
515	15	12	231.742	216.742	228.575		Y	4	2	n/a	31-05-06, L2
531	15	12	231.705	216.705	228.575		Y	2	n/a	n/a	14-07-06, L1
514	15	12	231.755	216.755	228.575		Y	6	4	4	14-07-06, L1
517	15	12	231.489	216.489	228.575		Y	4	2	n/a	30-05-06, L1
516	15	12	230.689	215.689	228.575		Y	8	6	4	05-06-06, L2

Pile #:

Comments:

The City of Winnipeg – Water Treatment Plant

PILE NUMBER	PILE LENGTH	DEPTH PREBORED	FINAL TOP ELEV.	FINAL TIP ELEV.	DES. CUTOFF ELEV.	ACT CUTOFF ELEV.	PILE PLUMBNESS	FINAL SET (mm)			Manufacturers Markings R = Re-Driven
								1 ST SET	2 ND SET	3 RD SET	
366	17	12	233.595	216.595	230.475		Y	20	12	8	19-06-06, L2
335	17	12	234.006	217.006	230.475		Y	23	18	10	14-06-06, L1
307	17	12	233.913	216.913	230.475		S 1%	8	6	10	16-06-06, L1
306	17	12	233.878	216.878	230.475		Y	12	6	4	16-06-06, L1
334	17	12	233.984	216.984	230.475		Y	20	18	12	16-06-06, L1
365	17	12	233.681	216.681	230.475		Y	24	20	15	19-06-06, L2
397	17	12	233.733	216.733	230.475		Y	12	15	10	19-06-06, L2
396	17	12	232.828	215.828	230.475		Y	24	20	20	19-06-06, L2
426	17	12	233.693	216.693	230.475		Y	23	10	6	19-06-06, L2
453	17	12	233.666	216.666	230.475		Y	20	12	15	19-06-06, L2

Pile #:

Comments:



A Tyco International Ltd. Company

PILE DRIVING RECORDS - DATE: Aug.2/2006

The City of Winnipeg – Water Treatment Plant

PILE NUMBER	PILE LENGTH	DEPTH PREBORED	FINAL TOP ELEV.	FINAL TIP ELEV.	DES. CUTOFF ELEV.	ACT CUTOFF ELEV.	PILE PLUMBNESS	FINAL SET (mm)			Manufacturers Markings R = Re-Driven
								1 ST SET	2 ND SET	3 RD SET	
485	15	12	231.477	216.477	229.875			2	n/a	n/a	26-04-06, L2
484	15	12	231.547	216.547	229.875			3	n/a	n/a	26-04-06, L2
487	15	12	231.491	216.491	229.875			2	n/a	n/a	26-04-06, L2
486	15	12	231.546	216.542	229.875			10	6	4	26-04-06, L2
520	15	12	231.522	216.522	228.575			24	20	20	11-07-06, L1
532	15	12	230.845	215.845	228.575			20	12	20	29-06-06, L2
521	15	12	232.135	217.135	228.575		SE .5%	23	8	6	11-07-06, L1

Pile #:

Comments:

The City of Winnipeg – Water Treatment Plant

PILE NUMBER	PILE LENGTH	DEPTH PREBORED	FINAL TOP ELEV.	FINAL TIP ELEV.	DES. CUTOFF ELEV.	ACT CUTOFF ELEV.	PILE PLUMBNESS	FINAL SET (mm)			Manufacturers Markings R = Re-Driven
								1 ST SET	2 ND SET	3 RD SET	
368	17	12	234.226	217.226	230.475		Y	23	20	20	16-06-06, L2
399	17	12	233.840	216.840	230.475		Y	22	8	2	16-06-06, L2
428	17	12	233.737	216.737	230.475		S 2%	4	2	n/a	16-06-06, L2
455	17	12	233.638	216.638	230.475		Y	15	12	8	15-06-06, L2
454	17	12	231.076	214.076	230.475		N 2%	10	8	12	15-06-06, L2
427	17	12	233.787	216.787	230.475		Y	24	10	6	15-06-06, L2
398	17	12	230.466	213.466	230.475		SE 1%	20	18	12	15-06-06, L2
367	17	12	234.052	217.052	230.475		Y	24	20	20	16-06-06, L1
337	17	12	234.078	217.078	230.475		Y	12	6	4	16-06-06, L1
309	17	12	233.498	216.498	230.475		Y	24	20	18	16-06-06, L1
308	17	12	233.893	216.893	230.475		Y	8	4	2	16-06-06, L1
336	17	12	234.072	217.072	230.475		Y	14	10	10	16-06-06, L1

Pile #:

Comments:

The City of Winnipeg – Water Treatment Plant

PILE NUMBER	PILE LENGTH	DEPTH PREBORED	FINAL TOP ELEV.	FINAL TIP ELEV.	DES. CUTOFF ELEV.	ACT CUTOFF ELEV.	PILE PLUMBNESS	FINAL SET (mm)			Manufacturers Markings R = Re-Driven
								1 ST SET	2 ND SET	3 RD SET	
311	17	12	233.756	216.756	230.475		Y	12	8	8	15-06-06, L1
310	17	12	233.549	216.549	230.475		S 2%	24	18	14	15-06-06, L1
339	17	12	234.207	217.207	230.475		Y	17	12	10	14-06-06, L1
370	17	12	233.779	216.779	230.475		Y	20	20	18	14-06-06, L1
401	17	12	233.829	216.829	230.475		Y	2	n/a	n/a	16-06-06, L1
400	17	12	233.773	216.773	230.475		Y	6	2	n/a	16-06-06, L1
369	17	12	234.398	217.398	230.475		Y	12	4	2	14-06-06, L1
338	17	12	234.132	217.132	230.475		Y	18	13	10	14-06-06, L1
430	17	12	233.678	216.678	230.475		Y	20	10	7	14-06-06, L1
457	17	12	233.600	216.600	230.475		N 1.5%	12	15	10	16-06-06, L2
456	17	12	228.980	211.980	230.475		Y	24	20	22	16-06-06, L2
429	17	12	233.674	216.764	230.475		Y	4	n/a	n/a	16-06-06, L2

Pile #:

Comments:

 - # 466
 - #429

 Chaser needed
 Stopped on boulder

The City of Winnipeg – Water Treatment Plant

PILE NUMBER	PILE LENGTH	DEPTH PREBORED	FINAL TOP ELEV.	FINAL TIP ELEV.	DES. CUTOFF ELEV.	ACT CUTOFF ELEV.	PILE PLUMBNESS	FINAL SET (mm)			Manufacturers Markings R = Re-Driven
								1 ST SET	2 ND SET	3 RD SET	
313	17	12	233.733	216.733	230.475		Y	21	15	13	15-06-06, L1
312	17	12	233.603	216.603	230.475		Y	24	22	22	15-06-06, L2
341	17	12	233.744	216.744	230.475		Y	15	12	10	15-06-06, L2
372	17	12	233.682	216.682	230.475		S 2%	4	2	n/a	15-06-06, L2
403	17	12	233.663	216.663	230.475		Y	3	n/a	n/a	14-06-06, L1
402	17	12	233.706	216.706	230.475		E 1.5%	2	2	n/a	14-06-06, L1
371	17	12	233.779	216.779	230.475		SE 2%	8	3	n/a	14-06-06, L1
340	17	12	233.473	216.473	230.475		Y	20	16	10	14-06-06, L1
432	17	12	233.614	216.614	230.475		Y	6	2	n/a	15-06-06, L1
459	17	12	233.575	216.575	230.475		Y	4	2	n/a	15-06-06, L1

Pile #:

Comments:



A Tyco International Ltd. Company

PILE DRIVING RECORDS - DATE: Aug.9/2006

The City of Winnipeg – Water Treatment Plant

PILE NUMBER	PILE LENGTH	DEPTH PREBORED	FINAL TOP ELEV.	FINAL TIP ELEV.	DES. CUTOFF ELEV.	ACT CUTOFF ELEV.	PILE PLUMBNESS	FINAL SET (mm)			Manufacturers Markings R = Re-Driven
								1 ST SET	2 ND SET	3 RD SET	
458	17	12	233.611	216.611	230.475			6	n/a	n/a	11-06-06, L2
431	17	12	233.657	216.657	230.475		SE 1.5%	8	6	2	11-06-06, L2
489	15	12	231.478	216.478	229.875		S .5%	7	7	3	12-07-06, L1
488	15	12	231.461	216.461	229.875			12	6	n/a	13-07-06, L1
491	15	12	231.517	216.517	229.875			6	4	n/a	13-07-06, L1
490	15	12	229.908	219.908	229.875			24	20	20	12-07-06, L1

Pile #:

Comments:

The City of Winnipeg – Water Treatment Plant

PILE NUMBER	PILE LENGTH	DEPTH PREBORED	FINAL TOP ELEV.	FINAL TIP ELEV.	DES. CUTOFF ELEV.	ACT CUTOFF ELEV.	PILE PLUMBNESS	FINAL SET (mm)			Manufacturers Markings R = Re-Driven
								1 ST SET	2 ND SET	3 RD SET	
374	17	12	233.761	216.761	230.475		S 2%	12	6	4	13-06-06, L2
405	17	12	233.687	216.687	230.475		Y	3	n/a	n/a	14-06-06, L2
404	17	12	233.672	216.672	230.475		Y	4	2	n/a	14-06-06, L2
373	17	12	230.816	213.816	230.475		Y	10	20	12	14-06-06, L2
343	17	12	233.777	216.777	230.475		Y	23	20	20	13-06-06, L3
342	17	12	233.756	216.756	230.475		SE 1%	18	16	13	13-06-06, L1
314	17	12	233.999	216.999	230.475		Y	22	17	17	14-06-06, L2
315	17	12	234.145	217.145	230.475		Y	20	16	9	14-06-06, L2
434	17	12	233.682	216.682	230.475		Y	2	n/a	n/a	14-06-06, L2
461	17	12	231.694	214.694	230.475		Y	24	22	22	14-06-06, L2

Pile #:

Comments:

The City of Winnipeg – Water Treatment Plant

PILE NUMBER	PILE LENGTH	DEPTH PREBORED	FINAL TOP ELEV.	FINAL TIP ELEV.	DES. CUTOFF ELEV.	ACT CUTOFF ELEV.	PILE PLUMBNESS	FINAL SET (mm)			Manufacturers Markings R = Re-Driven
								1 ST SET	2 ND SET	3 RD SET	
433	17	12	233.645	216.645	230.475		Y	20	10	15	14-06-06, L1
460	17	12	233.612	216.612	230.475		Y	17	12	12	14-06-06, L1
493	15	12	231.982	216.982	229.875		Y	24	22	20	13-06-06, L1
492	15	12	233.153	218.153	229.875		Y	20	18	15	13-06-06, L1
495	15	12	232.027	217.027	229.875		Y	16	13	10	12-06-06, L1
494	15	12	232.161	217.027	229.875		Y	21	17	15	11-06-06, L1

Pile #:

Comments:

The City of Winnipeg – Water Treatment Plant

PILE NUMBER	PILE LENGTH	DEPTH PREBORED	FINAL TOP ELEV.	FINAL TIP ELEV.	DES. CUTOFF ELEV.	ACT CUTOFF ELEV.	PILE PLUMBNESS	FINAL SET (mm)			Manufacturers Markings R = Re-Driven
								1 ST SET	2 ND SET	3 RD SET	
523	15	12	231.446	216.446	228.575		Y	23	20	18	26-05-06, L2
522	15	12	LOST				Y	22	15	10	09-06-06, L2
463	17	12	233.617	216.617	230.475		Y	20	18	4	13-06-06, L1
436	17	12	233.787	216.787	230.475		Y	12	18	15	13-06-06, L1
407	17	12	233.822	216.822	230.475		Y	23	19	17	13-06-06, L1
406	17	12	233.875	216.875	230.475		E 2%	16	12	9	13-06-06, L1
435	17	12	233.725	216.725	230.475		Y	8	5	2	13-06-06, L1
462	17	12	233.695	216.695	230.475		Y	20	22	18	13-06-06, L1
376	17	12	233.802	216.802	230.475		Y	12	9	4	13-06-06, L1
375	17	12	233.872	216.872	230.475		Y	8	6	5	13-06-06, L1
344	17	12	234.016	217.016	230.475		Y	18	15	12	14-06-06, L1
345	17	12	233.648	216.648	230.475		Y	23	20	20	14-06-06, L1
317	17	12	233.647	216.647	230.475		Y	2	n/a	n/a	13-06-06, L1
316	17	12	233.503	216.503	230.475		Y	10	9	n/a	13-06-06, L1

Pile #:

Comments:

The City of Winnipeg – Water Treatment Plant

PILE NUMBER	PILE LENGTH	DEPTH PREBORED	FINAL TOP ELEV.	FINAL TIP ELEV.	DES. CUTOFF ELEV.	ACT CUTOFF ELEV.	PILE PLUMBNESS	FINAL SET (mm)			Manufacturers Markings R = Re-Driven
								1 ST SET	2 ND SET	3 RD SET	
319	17	12	233.724	216.724	230.475		Y	8	6	2	12-06-06, L1
318	17	12	233.699	216.699	230.475		SE 2%	6	4	4	12-06-06, L1
347	17	12	233.557	216.557	230.475		Y	2	n/a	n/a	12-06-06, L1
346	17	12	233.630	216.630	230.475		S 1.5%	7	4	3	12-06-06, L1
378	17	12	233.635	216.635	230.475		Y	12	4	2	12-06-06, L1
377	17	12	233.731	216.731	230.475		Y	20	15	21	12-06-06, L1
409	17	12	233.656	216.656	230.475		Y	8	2	n/a	12-06-06, L1
408	17	12	233.744	216.744	230.475		Y	3	n/a	n/a	12-06-06, L1
438	17	12	233.508	216.508	230.475		Y	20	16	13	12-06-06, L1
437	17	12	233.697	216.697	230.475		Y	14	12	12	12-06-06, L1
465	17	12	233.561	216.561	230.475		Y	23	8	3	12-06-06, L1
464	17	12	233.636	216.636	230.475		Y	24	12	6	12-06-06, L1

Pile #:

Comments:



A Tyco International Ltd. Company

PILE DRIVING RECORDS - DATE: Aug.22/2006

The City of Winnipeg – Water Treatment Plant

PILE NUMBER	PILE LENGTH	DEPTH PREBORED	FINAL TOP ELEV.	FINAL TIP ELEV.	DES. CUTOFF ELEV.	ACT CUTOFF ELEV.	PILE PLUMBNESS	FINAL SET (mm)			Manufacturers Markings R = Re-Driven
								1 ST SET	2 ND SET	3 RD SET	
524	15	12	231.424	216.424	228.575			20	13	8	10-05-05, L3
525	15	12	231.454	216.454	228.575			21	18	15	16-08-06, L1
522a	17	12	233.590	216.590	228.575			20	17	12	16-08-06, L1

Pile #:

Comments:

- #522 did not stop on re-drive, replaced with 17m pile.
- 0.300m North of Lost
- Drill for pile 522a, 2:50-2:55
- Stand new pile, 2:59-3:03

The City of Winnipeg – Water Treatment Plant

PILE NUMBER	PILE LENGTH	DEPTH PREBORED	FINAL TOP ELEV.	FINAL TIP ELEV.	DES. CUTOFF ELEV.	ACT CUTOFF ELEV.	PILE PLUMBNESS	FINAL SET (mm)			Manufacturers Markings R = Re-Driven
								1 ST SET	2 ND SET	3 RD SET	
497	15	12	231.588	216.588	229.875			21	17	15	10-05-05, L3
499	15	12	231.333	216.333	229.875			20	13	9	10-05-05, L3
496	15	12	231.591	216.591	229.875			20	13	9	10-05-05, L3
498	15	12	231.478	216.478	229.875			21	8	10	10-05-05, L3
349	17	12	233.471	216.471	230.475		S 1%	2	n/a	n/a	19-07-06, L2
320	17	12	233.754	216.754	230.475			12	8	5	19-07-06, L2
348	17	12	233.601	216.601	230.475			4	n/a	n/a	19-07-06, L2
379	17	12	233.499	216.499	230.475		S .5%	13	10	10	19-07-06, L2
380	17	12	233.609	216.619	230.475			2	n/a	n/a	17-07-06, L2
411	17	12	233.525	216.525	230.475			10	3	n/a	17-07-06, L2

Pile #:

Comments:

The City of Winnipeg – Water Treatment Plant

PILE NUMBER	PILE LENGTH	DEPTH PREBORED	FINAL TOP ELEV.	FINAL TIP ELEV.	DES. CUTOFF ELEV.	ACT CUTOFF ELEV.	PILE PLUMBNESS	FINAL SET (mm)			Manufacturers Markings R = Re-Driven
								1 ST SET	2 ND SET	3 RD SET	
410	17	12	233.604	216.604	230.475		Y	2	2	n/a	18-07-06, L1
440	17	12	233.355	216.355	230.475		Y	24	20	20	18-07-06, L1
467	17	12	233.824	216.824	230.475		Y	23	20	17	18-07-06, L1
466	17	12	233.480	216.480	230.475		Y	17	14	10	18-07-06, L1
439	17	12	232.639	216.639	230.475		Y	12	10	11	17-07-06, L2

Pile #:

Comments:

The City of Winnipeg – Water Treatment Plant

PILE NUMBER	PILE LENGTH	DEPTH PREBORED	FINAL TOP ELEV.	FINAL TIP ELEV.	DES. CUTOFF ELEV.	ACT CUTOFF ELEV.	PILE PLUMBNESS	FINAL SET (mm)			Manufacturers Markings R = Re-Driven
								1 ST SET	2 ND SET	3 RD SET	
527	15	3.7	231.372	216.372	228.575		SE 2%	17	12	9	10-05-05, L3
503	15	3.7	231.237	216.237	229.875		SE 2%	13	8	6	17-08-06, L1
501	15	3.7	231.278	216.278	229.875			24	12	7	17-08-06, L1
500	15	3.7	231.248	216.248	229.875			4	2	n/a	17-08-06, L1
502	15	3.7	231.407	216.407	229.875		SE 1%	20	14	4	10-05-05, L3
526	15	3.7	231.433	216.433	228.575			23	20	20	10-05-05, L3
533	15	3.7	231.261	216.261	228.575		S 1%	20	16	13	10-05-05, L3
382	17	3.7	233.832	216.832	230.475			21	n/a	n/a	03-08-06, L2
413	17	3.7	233.642	216.642	230.475			18	5	3	03-08-06, L2

Pile #:

Comments:

The City of Winnipeg – Water Treatment Plant

PILE NUMBER	PILE LENGTH	DEPTH PREBORED	FINAL TOP ELEV.	FINAL TIP ELEV.	DES. CUTOFF ELEV.	ACT CUTOFF ELEV.	PILE PLUMBNESS	FINAL SET (mm)			Manufacturers Markings R = Re-Driven
								1 ST SET	2 ND SET	3 RD SET	
323	17	3.7	233.852	216.852	230.475			13	4	3	16-07-06, L2
322	17	3.7	233.680	216.680	230.475			11	5	2	16-07-06, L2
350	17	3.7	233.672	216.672	230.475			14	5	5	17-07-06, L2
381	17	3.7	233.653	216.653	230.475			12	5	7	30-07-06, L2
412	17	3.7	231.263	214.263	230.475			21	19	17	30-07-06, L2
441	17	3.7	233.710	216.710	230.475			19	17	12	16-07-06, L2
442	17	3.7	233.573	216.573	230.475			19	16	10	17-07-06, L2
469	17	3.7	232.431	215.431	230.475			21	17	11	17-07-06, L2
468	17	3.7	233.801	216.801	230.475			23	21	23	10-05-06, L2
351	17	3.7	233.878	216.878	230.475			21	n/a	n/a	03-08-06, L2

Pile #:

Comments:

The City of Winnipeg – Water Treatment Plant

PILE NUMBER	PILE LENGTH	DEPTH PREBORED	FINAL TOP ELEV.	FINAL TIP ELEV.	DES. CUTOFF ELEV.	ACT CUTOFF ELEV.	PILE PLUMBNESS	FINAL SET (mm)			Manufacturers Markings R = Re-Driven
								1 ST SET	2 ND SET	3 RD SET	
324	17	3.7	233.902	216.902	230.475			4	2	n/a	01-08-06, L2
353	17	3.7	233.837	216.837	230.475			17	8	6	01-08-06, L2
384	17	3.7	233.892	216.892	230.475			2	n/a	n/a	31-07-06, L2
352	17	3.7	233.837	216.837	230.475			3	n/a	n/a	30-07-06, L2
383	17	3.7	233.812	216.812	230.475			8	6	2	01-08-06, L2
415	17	3.7	233.839	216.839	230.475			5	2	n/a	01-08-06, L2
414	17	3.7	233.813	216.813	230.475			12	7	2	30-07-06, L2
443	17	3.7	233.794	216.794	230.475			8	6	3	30-07-06, L2
470	17	3.7	233.656	216.666	230.475			23	21	20	31-07-06, L2

Pile #:
Comments:

- #324, 384, 352, 415

Likely stopped on a rock.

The City of Winnipeg – Water Treatment Plant

PILE NUMBER	PILE LENGTH	DEPTH PREBORED	FINAL TOP ELEV.	FINAL TIP ELEV.	DES. CUTOFF ELEV.	ACT CUTOFF ELEV.	PILE PLUMBNESS	FINAL SET (mm)			Manufacturers Markings R = Re-Driven
								1 ST SET	2 ND SET	3 RD SET	
325	17	7.7	233.954	216.954	230.475		Y	25	n/a	n/a	03-07-06, L2
354	17	7.7	233.782	216.782	230.475		Y	23	17	10	03-07-06, L2
355	17	7.7	233.878	216.878	230.475		Y	21	11	n/a	03-07-06, L2
385	17	7.7	233.776	216.766	230.475		Y	19	14	1	30-07-06, L1
386	17	7.7	233.846	216.846	230.475		Y	16	10	n/a	30-07-06, L1
416	17	7.7	233.810	216.810	230.475		Y	17	9	3	13-08-06, L2
417	17	7.7	233.867	216.867	230.475		Y	18	11	5	03-08-06, L2
444	17	3.7	233.758	216.758	230.475		Y	17	13	4	03-08-06, L2
470	17	7.7	233.666	216.666	230.475		Y	19	14	11	03-08-06, L2
471	17	7.7	233.551	216.551	230.475		Y	20	16	5	03-08-06, L2

Pile #:
Comments:

- 10:21am – Commence hammering, 10:22 wait for shots, 10:26 Hammering
- #325, #355 stopped on rock, Stopped for shots ≈ 5 mins/pile
- 10:53am unloading piles & standing, 11:06 hammering, 11:25 unloading
- 11:31am hammering, 12:12 lunch, 1:00pm Sub in the hole (waiting for surveyors)
- 1:03pm Hammering, 1:21 unloading & standing

108 off-site in PM.

The City of Winnipeg – Water Treatment Plant

PILE NUMBER	PILE LENGTH	DEPTH PREBORED	FINAL TOP ELEV.	FINAL TIP ELEV.	DES. CUTOFF ELEV.	ACT CUTOFF ELEV.	PILE PLUMBNESS	FINAL SET (mm)			Manufacturers Markings R = Re-Driven
								1 ST SET	2 ND SET	3 RD SET	
356	17	3.7	233.890	216.890	230.475		Y	10	6	2	29-07-06, L2
357	15	7.7	231.901	206.901	229.750		SW 1%	8	2	2	18-08-06, L2
326	15	3.7	231.908	216.908	229.750		Y	2	n/a	n/a	18-08-06, L2
600	15	7.7	231.870	216.870	229.750		S 2%	6	2	n/a	18-08-06, L2
697	15	7.7	231.958	216.958	229.750		Y	12	10	3	09-05-05, L3
678	15	7.7	231.568	216.568	229.750		Y	15	14	5	09-05-05, L3
659	15	7.7	231.554	216.554	229.750		W 2%	13	10	8	10-05-05, L3
639	15	7.7	231.663	216.663	229.750		NW 1.5%	14	7	3	09-05-05, L3
619	15	7.7	231.894	216.894	229.750		SE 1.5%	18	11	7	09-05-05, L3
601	17	7.7	233.858	216.858	230.475		Y	13	1	n/a	29-07-06, L2

Pile #:

Comments:

- Stopped @ 11:30 moved level, took shots, started @ 11:45
- #326, 600, 601 Likely stopped on rock.

The City of Winnipeg – Water Treatment Plant

PILE NUMBER	PILE LENGTH	DEPTH PREBORED	FINAL TOP ELEV.	FINAL TIP ELEV.	DES. CUTOFF ELEV.	ACT CUTOFF ELEV.	PILE PLUMBNESS	FINAL SET (mm)			Manufacturers Markings R = Re-Driven
								1 ST SET	2 ND SET	3 RD SET	
698	17	7.7	233.608	216.608	230.475		Y	17	13	8	29-07-06, L2
679	17	7.7	233.524	216.524	230.475		Y	12	10	5	29-07-06, L2
660	17	7.7	233.548	216.548	230.475		Y	15	13	7	29-07-06, L2
640	17	7.7	233.623	216.623	230.475		Y	18	8	3	29-07-06, L2
620	17	7.7	233.699	216.699	230.475		Y	14	13	2	29-07-06, L2
602	17	7.7	233.919	219.919	230.475		Y	17	14	7	29-07-06, L2

Pile #:

Comments:

The City of Winnipeg – Water Treatment Plant

PILE NUMBER	PILE LENGTH	DEPTH PREBORED	FINAL TOP ELEV.	FINAL TIP ELEV.	DES. CUTOFF ELEV.	ACT CUTOFF ELEV.	PILE PLUMBNESS	FINAL SET (mm)			Manufacturers Markings R = Re-Driven
								1 ST SET	2 ND SET	3 RD SET	
538	15	7.7	231.488	216.488	229.675		Y	11	3	n/a	18-08-06, L2
528	15	7.7	231.504	216.504	229.675		Y	13	7	3	18-08-06, L2
472	17	3.7	233.682	216.682	230.475		W 2%	19	14	8	30-07-06, L1
473	15	7.7	231.733	216.733	229.750		Y	20	16	9	09-05-05, L1
445	17	3.7	233.734	216.734	230.475		Y	21	11	7	29-07-06, L1
446	15	7.7	231.687	216.687	229.750		Y	20	16	14	09-05-05, L3
418	17	3.7	233.823	216.823	230.475		Y	12	4	n/a	29-07-06, L3
419	15	7.7	231.769	216.769	229.750		Y	8	6	4	09-05-05, L3
387	17	3.7	233.843	216.843	230.475		SW 2%	2	n/a	n/a	27-07-06, L2
388	15	7.7	231.717	216.717	229.750		S 1.5%	4	1	n/a	09-05-05, L3

Pile #:

Comments:

- Coffee @ 9:50am (approx 6 minutes stand-by/ pile), 10:05 sub in the hole
- 10:06 Hammering, 12:07 – Lunch, Unloading piles, drilling, & standing & coffee till 3:06pm
- #418, 387, 388 Likely stopped on rock
- Approx. ½ hours delay for surveying in P.M.
- Drove piles until about 5:05pm
- Total delay for surveying in a.m. = 1 hr 40 mins
- Total delay for surveying in p.m. = 30 mins.

The City of Winnipeg – Water Treatment Plant

PILE NUMBER	PILE LENGTH	DEPTH PREBORED	FINAL TOP ELEV.	FINAL TIP ELEV.	DES. CUTOFF ELEV.	ACT CUTOFF ELEV.	PILE PLUMBNESS	FINAL SET (mm)			Manufacturers Markings R = Re-Driven
								1 ST SET	2 ND SET	3 RD SET	
539	15	7.6	231.347	216.347	229.675		Y	12	3	2	18-08-06, L2
540	15	7.6	231.305	216.305	229.675		Y	8	6	5	18-08-06, L2
751	16	7.6	232.418	216.418	229.675		Y	4	2	n/a	17-07-06, L2
752	16	7.6	232.055	216.055	229.675		Y	23	5	4	17-07-06, L2
753	16	7.6	232.021	216.021	229.675		Y	8	4	n/a	17-07-06, L2
754	16	7.6	232.020	216.020	229.675		Y	12	2	n/a	17-07-06, L2
755	16	7.6	232.039	206.039	229.675		Y	6	3	n/a	17-07-06, L2
756	16	7.6	232.083	216.083	229.675		Y	8	n/a	n/a	17-07-06, L2
757	16	7.6	232.155	216.155	229.675		Y	6	n/a	n/a	10-02-05, L2
758	16	7.6	232.188	216.188	229.675		Y	7	4	3	10-02-05, L2

Pile #:

Comments:

751, 753, 754, 755, 756, 757

Likely stopped on rock.

The City of Winnipeg – Water Treatment Plant

PILE NUMBER	PILE LENGTH	DEPTH PREBORED	FINAL TOP ELEV.	FINAL TIP ELEV.	DES. CUTOFF ELEV.	ACT CUTOFF ELEV.	PILE PLUMBNESS	FINAL SET (mm)			Manufacturers Markings R = Re-Driven
								1 ST SET	2 ND SET	3 RD SET	
759	16	7.6	232.260	216.260	229.675			4	2	n/a	10-02-06, L2
760	16	7.6	232.283	216.283	229.675			3	1	n/a	10-02-06, L2
761	17	7.6	233.318	216.318	229.675			21	8	6	27-07-06, L1
762	17	7.6	233.178	216.178	229.675			14	8	10	29-07-06, L1
763	17	7.6	233.197	216.197	229.675			12	2	n/a	29-07-06, L1
764	17	7.6	233.245	216.245	229.675			6	n/a	n/a	29-07-06, L1

Pile #:
Comments:

The City of Winnipeg – Water Treatment Plant

PILE NUMBER	PILE LENGTH	DEPTH PREBORED	FINAL TOP ELEV.	FINAL TIP ELEV.	DES. CUTOFF ELEV.	ACT CUTOFF ELEV.	PILE PLUMBNESS	FINAL SET (mm)			Manufacturers Markings R = Re-Driven
								1 ST SET	2 ND SET	3 RD SET	
529	15	7.6	231.534	216.534	229.675		Y	17	12	9	18-08-06, L2
530	15	7.6	231.489	216.489	229.675		Y	4			18-08-06, L2
737	16	7.6	232.403	216.403	229.675		Y	27	7	5	02-06-06, L2
738	16	7.6	232.187	216.187	229.675		Y	7	6		02-06-06, L2
739	16	7.6	232.158	216.158	229.675		Y	3			02-06-06, L2
740	16	7.6	232.101	216.101	229.675		Y	11	3		02-06-06, L2
741	16	7.6	232.140	216.140	229.675		Y	14	3		02-06-06, L2
742	16	7.6	232.120	216.120	229.675		Y	14	3		02-06-06, L2

Pile #:

Comments:

- All piles drive roughly 1m before refusal on Sept.1-2006
- Marks placed for every blow for last metre with diesel pile hammer. August travel ranged from 70mm at start of marking to approx. 45mm travel per blow.
- Hydraulic: @ lowest energy / 10-12 Hyd = 1 Diesel Approx. @ 75% similar results, but problems keeping hammer on pile.
- Once all the bugs were worked out – during setting piles the comparison seems like the hydraulic hammer set @ 50% was delivering about 75% of the energy that the diesel delivers during setting. Decided that each pile would be given 24 blows with the hydraulic – if more than 25mm of movement was noted, then additional 12 blows per 12.5mm would be given.

The City of Winnipeg – Water Treatment Plant

PILE NUMBER	PILE LENGTH	DEPTH PREBORED	FINAL TOP ELEV.	FINAL TIP ELEV.	DES. CUTOFF ELEV.	ACT CUTOFF ELEV.	PILE PLUMBNESS	FINAL SET (mm)			Manufacturers Markings R = Re-Driven
								1 ST SET	2 ND SET	3 RD SET	
753	17	7.6	233.383	216.383	230.475		Y	23	12	6	28-07-06, L2
509	17	7.6	233.419	216.419	230.475		Y	22	20	19	28-07-06, L2
507	15	7.6	231.415	216.415	229.875		Y	20	17	13	18-08-06, L2
505	15	7.6	231.501	216.501	229.875		Y	19	14	12	18-08-06, L2
504	15	7.6	231.650	216.650	229.875		Y	21	12	9	18-08-06, L2
506	15	7.6	229.474	214.474	229.875		Y				18-08-06, L2
743	16	7.6	232.068	216.068	229.675		Y	16	4	1	01-06-06, L2
744	16	7.6	232.156	216.156	229.675		Y	21	8	5	01-06-06, L2
745	16	7.6	232.283	216.283	229.675		Y	8	3	2	01-06-06, L2
746	16	7.6	232.312	216.312	229.675		Y	12	3	n/a	01-06-06, L2

Pile #:
Comments:

506

Chaser Needed

N/A means likely stopped on boulder.



A Tyco International Ltd. Company

PILE DRIVING RECORDS - DATE:

The City of Winnipeg – Water Treatment Plant

PILE NUMBER	PILE LENGTH	DEPTH PREBORED	FINAL TOP ELEV.	FINAL TIP ELEV.	DES. CUTOFF ELEV.	ACT CUTOFF ELEV.	PILE PLUMBNESS	FINAL SET (mm)			Manufacturers Markings R = Re-Driven
								1 ST SET	2 ND SET	3 RD SET	
747	16	7.6	232.326	216.326	229.675		Y	8	4	n/a	02-06-06, L1
748	16	7.6	232.275	216.275	229.675		Y	13	7	4	02-06-06, L1
749	16	7.6	232.293	216.293	229.675		Y	4	2	n/a	02-06-06, L1
750	16	7.6	232.289	216.289	229.675		Y	5	3	3	02-06-06, L1
711	17	7.6	233.561	261.561	230.475		Y	23	20	17	28-07-06, L2
475	17	7.6	233.783	216.783	216.783		Y	20	20	12	28-07-06, L2

Pile #:

Comments:

The City of Winnipeg – Water Treatment Plant

PILE NUMBER	PILE LENGTH	DEPTH PREBORED	FINAL TOP ELEV.	FINAL TIP ELEV.	DES. CUTOFF ELEV.	ACT CUTOFF ELEV.	PILE PLUMBNESS	FINAL SET (mm)			Manufacturers Markings R = Re-Driven
								1 ST SET	2 ND SET	3 RD SET	
717	16	7.6	232.650	216.650	229.875		Y	12	10	10	01-06-06, L1
716	16	7.6	232.626	216.626	229.875		Y	18	16	13	01-06-06, L1
719	16	7.6	233.197	217.197	229.875		Y	20	14	11	01-06-06, L1
718	16	7.6	231.648	215.648	229.875		Y	23	17	12	01-06-06, L1
722	16	7.6	232.358	216.358	229.875		Y	21	17	15	02-06-06, L1
723	16	7.6	232.240	216.240	229.875		Y	8	5	5	02-06-06, L1
726	16	7.6	232.253	216.253	229.875		Y	7	2	2	02-06-06, L1
727	16	7.6	232.296	216.206	229.875		Y	9	4	2	02-06-06, L1
721	16	7.6	233.261	217.261	229.875		Y	21	12	4	31-05-06, L1
720	16	7.6	232.438	216.438	229.875		Y	23	21	21	31-05-06, L1

Pile #:

Comments:

The City of Winnipeg – Water Treatment Plant

PILE NUMBER	PILE LENGTH	DEPTH PREBORED	FINAL TOP ELEV.	FINAL TIP ELEV.	DES. CUTOFF ELEV.	ACT CUTOFF ELEV.	PILE PLUMBNESS	FINAL SET (mm)			Manufacturers Markings R = Re-Driven
								1 ST SET	2 ND SET	3 RD SET	
724	16	7.6	232.316	216.316	229.875		Y	21	13	10	01-06-06, L1
725	16	7.6	232.321	216.321	229.875		Y	8	5	2	01-06-06, L1
728	16	7.6	232.216	216.216	229.875		Y	18	4	2	01-06-06, L1
730	16	7.6	232.268	216.268	229.875		Y	4	n/a	n/a	01-06-06, L1
729	16	7.6	232.284	216.284	229.875		Y	8	7	3	31-05-06, L2
731	16	7.6	232.325	216.325	229.875		Y	12	9	4	31-05-06, L2

Pile #:

Comments:

N/A means likely stopped on rock.

The City of Winnipeg – Water Treatment Plant

PILE NUMBER	PILE LENGTH	DEPTH PREBORED	FINAL TOP ELEV.	FINAL TIP ELEV.	DES. CUTOFF ELEV.	ACT CUTOFF ELEV.	PILE PLUMBNESS	FINAL SET (mm)			Manufacturers Markings R = Re-Driven
								1 ST SET	2 ND SET	3 RD SET	
700	17	7.6	233.465	216.465	230.475			9	5	5	26-07-06, L2
699	17	7.6	233.492	216.492	230.475			22	13	7	26-07-06, L2
680	17	7.6	233.536	216.536	230.475			12	8	8	26-07-06, L2
661	17	7.6	233.429	216.429	230.475			23	20	17	27-06-06, L2
641	17	7.6	233.266	216.266	230.475		N 2%	20	16	12	27-06-06, L2
621	17	7.6	233.663	216.663	230.475		S 2%	18	11	8	27-06-06, L2
603	17	7.6	233.839	216.839	230.475			18	9	9	25-07-06. L2
681	17	7.6	233.558	216.558	230.475			21	11	7	25-07-06. L2
662	17	7.6	233.497	216.497	230.475			23	20	18	25-07-06. L2
642	17	7.6	233.462	216.462	230.475			21	8	4	25-07-06. L2

Pile #:

Comments:

The City of Winnipeg – Water Treatment Plant

PILE NUMBER	PILE LENGTH	DEPTH PREBORED	FINAL TOP ELEV.	FINAL TIP ELEV.	DES. CUTOFF ELEV.	ACT CUTOFF ELEV.	PILE PLUMBNESS	FINAL SET (mm)			Manufacturers Markings R = Re-Driven
								1 ST SET	2 ND SET	3 RD SET	
622	17	7.6	233.643	216.643	230.475			20	20	17	27-07-06, L2
663	17	7.6	233.660	216.660	230.475		S 2%	23	15	8	24-07-06, L2
643	17	7.6	233.544	216.544	230.475			20	12	7	24-07-06, L2
623	17	7.6	233.507	216.507	230.475			11	8	8	24-07-06, L2
715	17	7.6	233.351	216.351	230.475			2	n/a	n/a	27-07-06, L2
732	17	7.6	233.220	216.220	230.475			4	7	5	27-07-06, L2
736	17	7.6	230.735	213.735	230.475		E 1.5%	20	17	14	27-07-06, L2
735	17	7.6	233.311	216.311	230.475			4	2	n/a	27-07-06, L2
734	17	7.6	233.266	216.266	230.475			12	6	4	27-07-06, L2

Pile #:

Comments:

N/A means likely stopped on boulder.



A Tyco International Ltd. Company

PILE DRIVING RECORDS - DATE: Sept.11/2006

The City of Winnipeg – Water Treatment Plant

PILE NUMBER	PILE LENGTH	DEPTH PREBORED	FINAL TOP ELEV.	FINAL TIP ELEV.	DES. CUTOFF ELEV.	ACT CUTOFF ELEV.	PILE PLUMBNESS	FINAL SET (mm)			Manufacturers Markings R = Re-Driven
								1 ST SET	2 ND SET	3 RD SET	
F705	17	12	233.636	216.636	230.475			20	17	11	18-05-06, L2
F704	17	12	233.871	216.871	230.475			22	17	14	18-05-06, L2
F685	17	12	233.799	216.799	230.475			24	20	17	18-05-06, L2
F667	17	12	233.703	216.703	230.475			20	17	11	18-05-06, L2
F647	17	12	233.359	216.359	230.475		2%	20	14	8	18-05-06, L2
F627	17	12	233.927	216.927	230.475			17	10	6	18-05-06, L2
F607	17	12	233.360	216.360	230.475		1%	11	7	0	18-05-06, L2
F608	17	12	233.238	216.238	230.475			10	3	0	18-05-06, L2
F609	17	12	233.129	216.129	230.475			17	11	6	18-05-06, L2
F686	17	12	233.600	216.600	230.475			20	14	11	18-05-06, L2

Pile #:

Comments:

The City of Winnipeg – Water Treatment Plant

PILE NUMBER	PILE LENGTH	DEPTH PREBORED	FINAL TOP ELEV.	FINAL TIP ELEV.	DES. CUTOFF ELEV.	ACT CUTOFF ELEV.	PILE PLUMBNESS	FINAL SET (mm)			Manufacturers Markings R = Re-Driven
								1 ST SET	2 ND SET	3 RD SET	
668	17	12	233.649	216.649	230.475		1%	17	11	7	18-5-06, L2
648	17	12	233.669	216.669	230.475			20	17	13	18-5-06, L2
628	17	12	233.816	216.816	230.475			19	14	12	18-5-06, L2
629	17	12	233.408	216.408	230.475			20	14	11	01-09-06, L2
649	17	12	233.673	216.673	230.475			20	16	13	19-05-06, L2
669	17	12	233.621	216.621	230.475			21	17	15	01-09-06, L2
687	17	12	233.746	216.746	230.475			23	20	17	01-09-06, L2
706	17	12	233.674	216.674	230.475			21	17	11	01-09-06, L2

Comments: