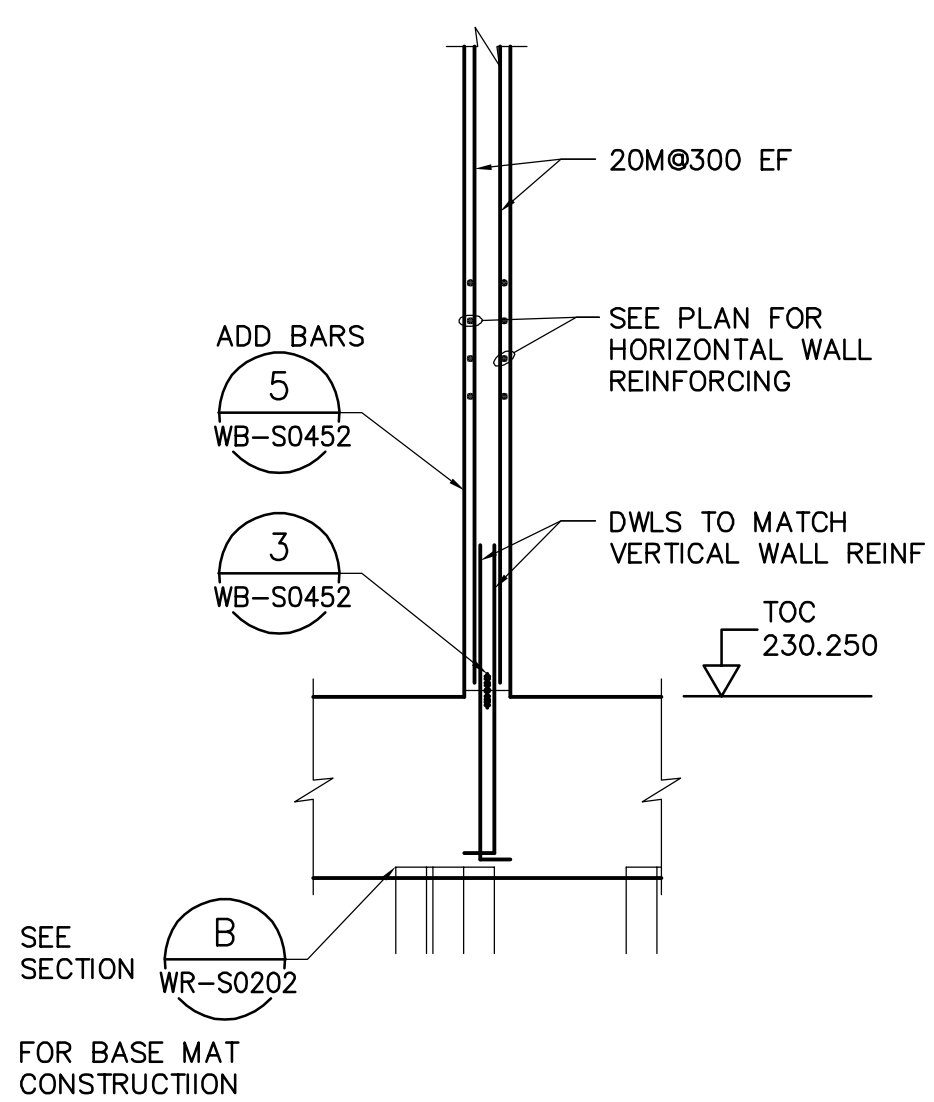
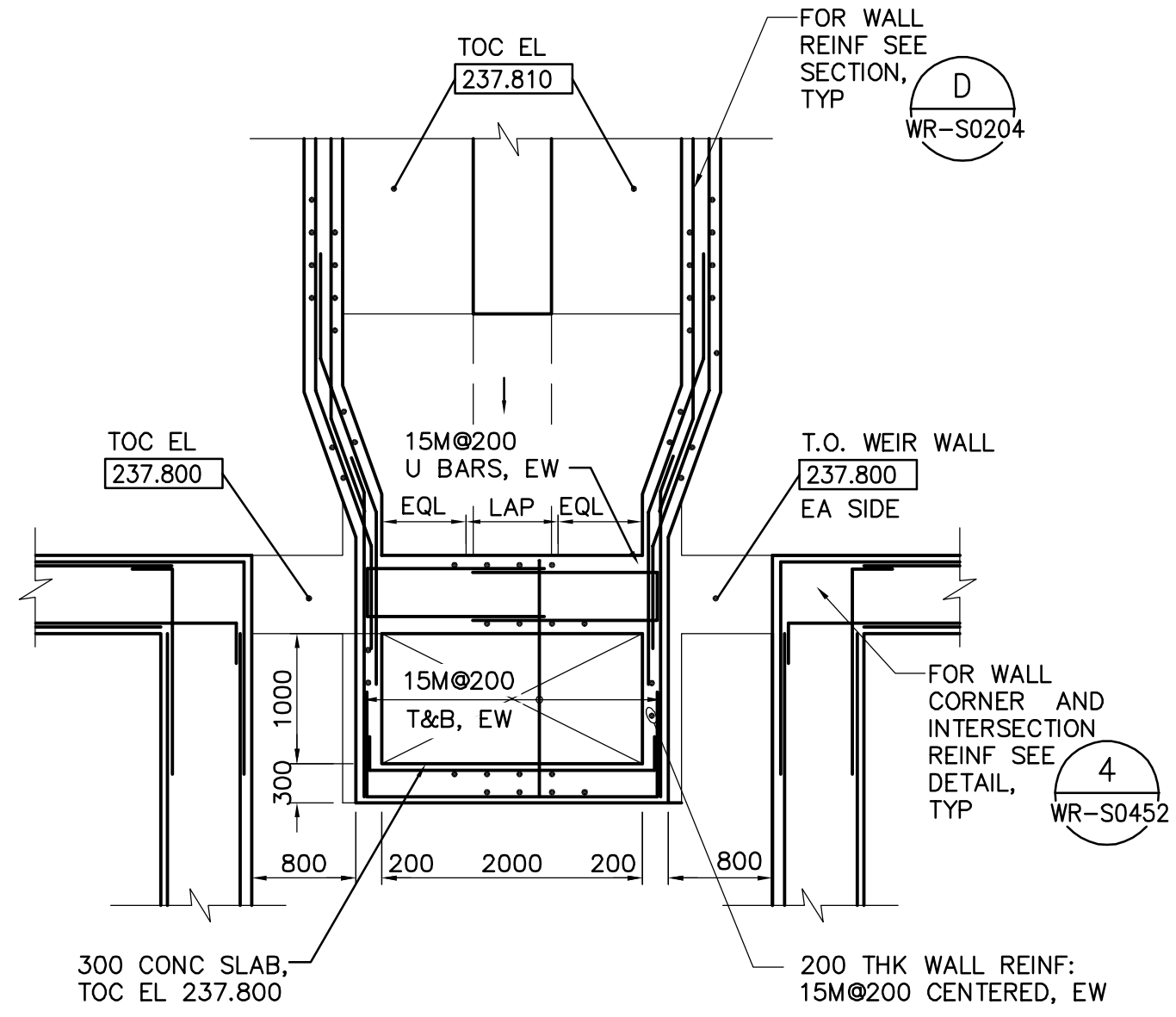


1 PLAN DETAIL  
WR-S0101 1:50

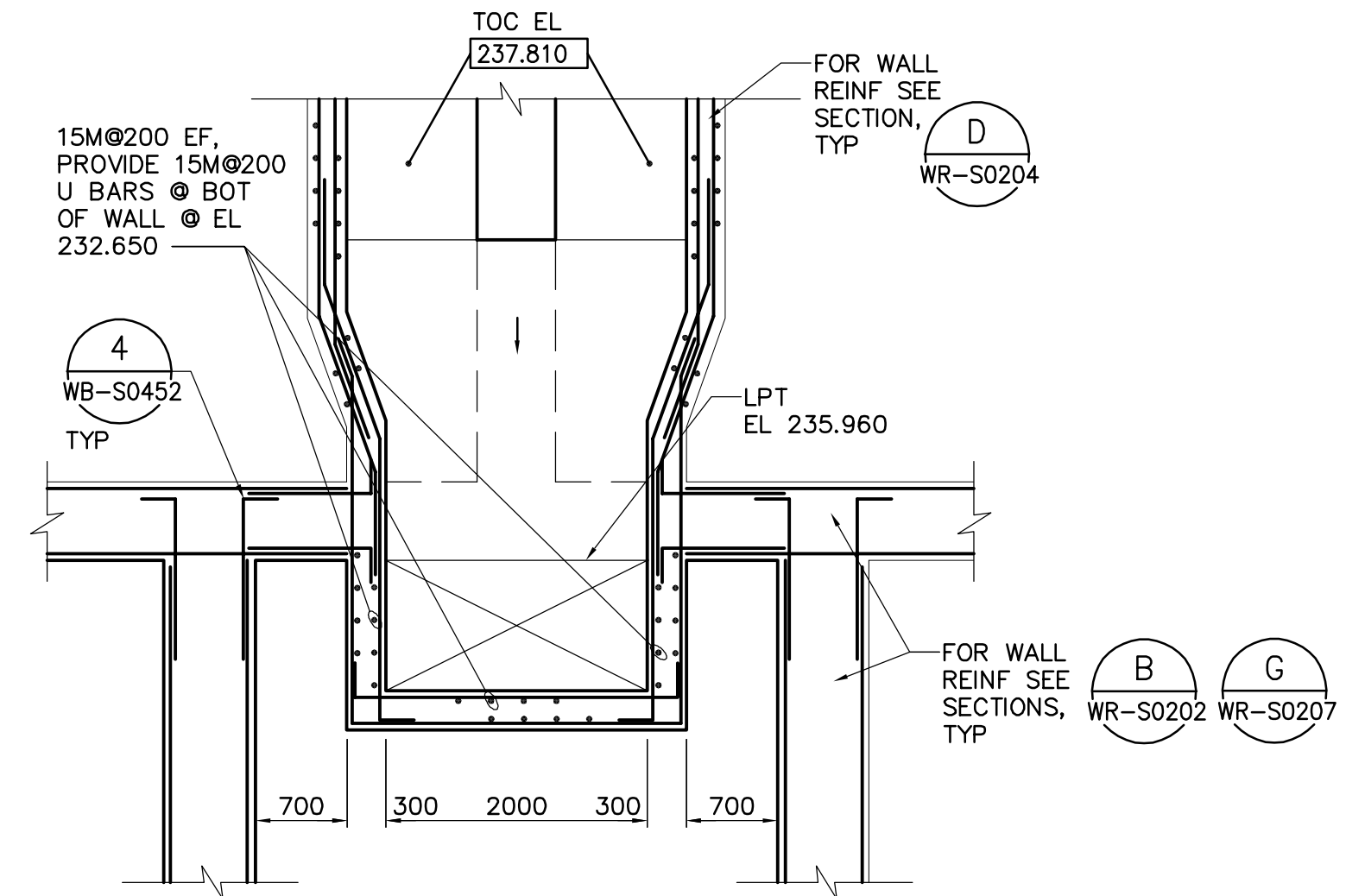


A SECTION  
1:50

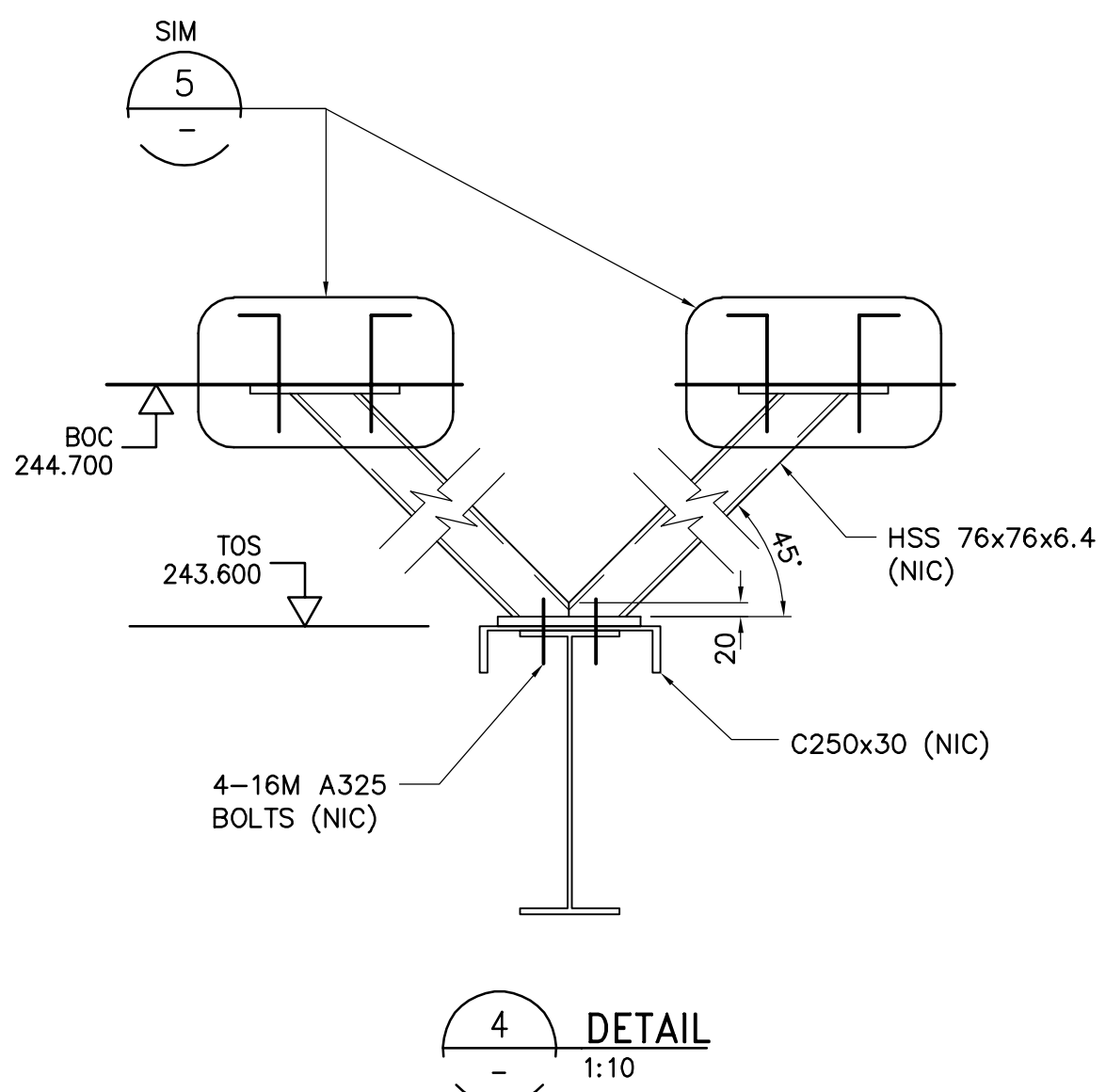


NOTE:  
1. FOR REINF DETAILS BELOW SLAB EL 237.800 SEE DETAILS 3 AND 9.

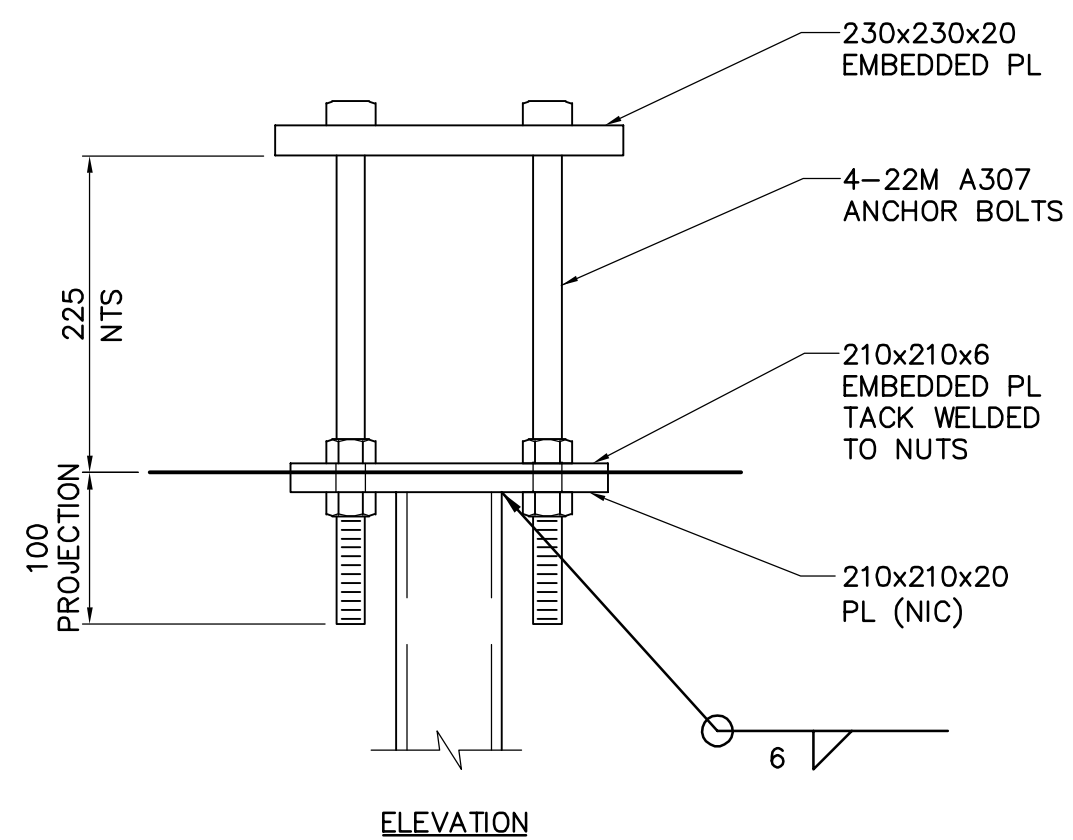
REINF ABOVE EL 237.800  
2 PLAN DETAIL  
WR-S0111 1:50



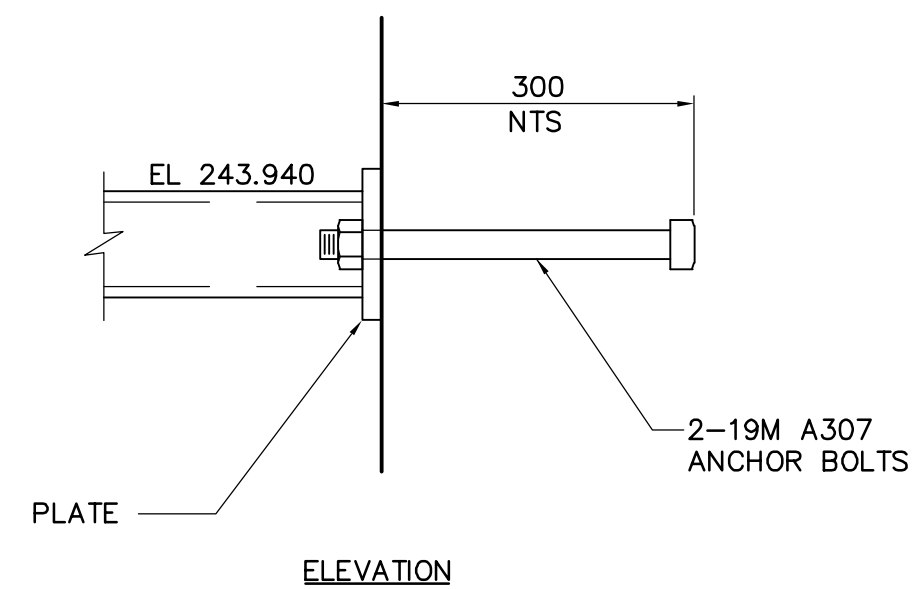
REINF BETWEEN EL 235.960-237.800  
3 PLAN DETAIL  
1:50



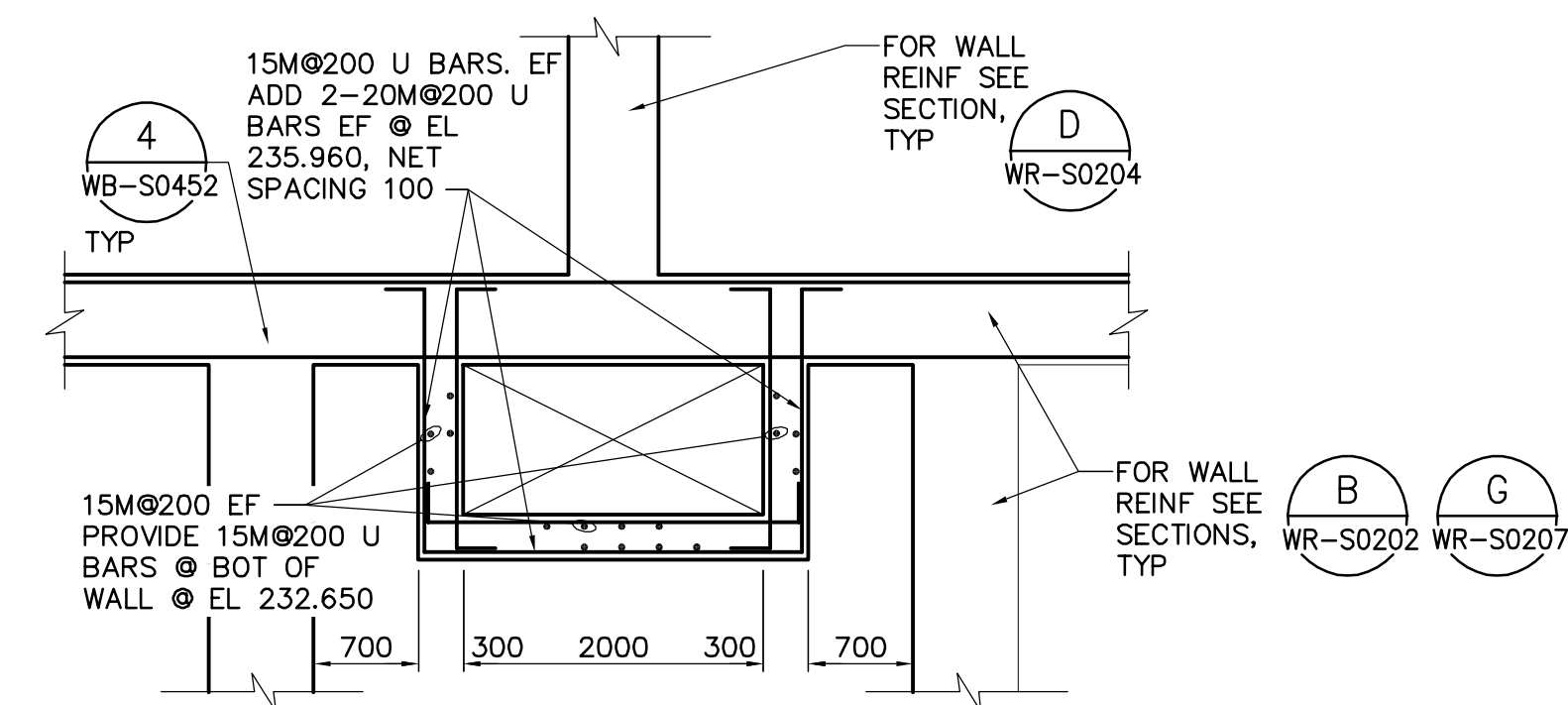
4 DETAIL  
1:10



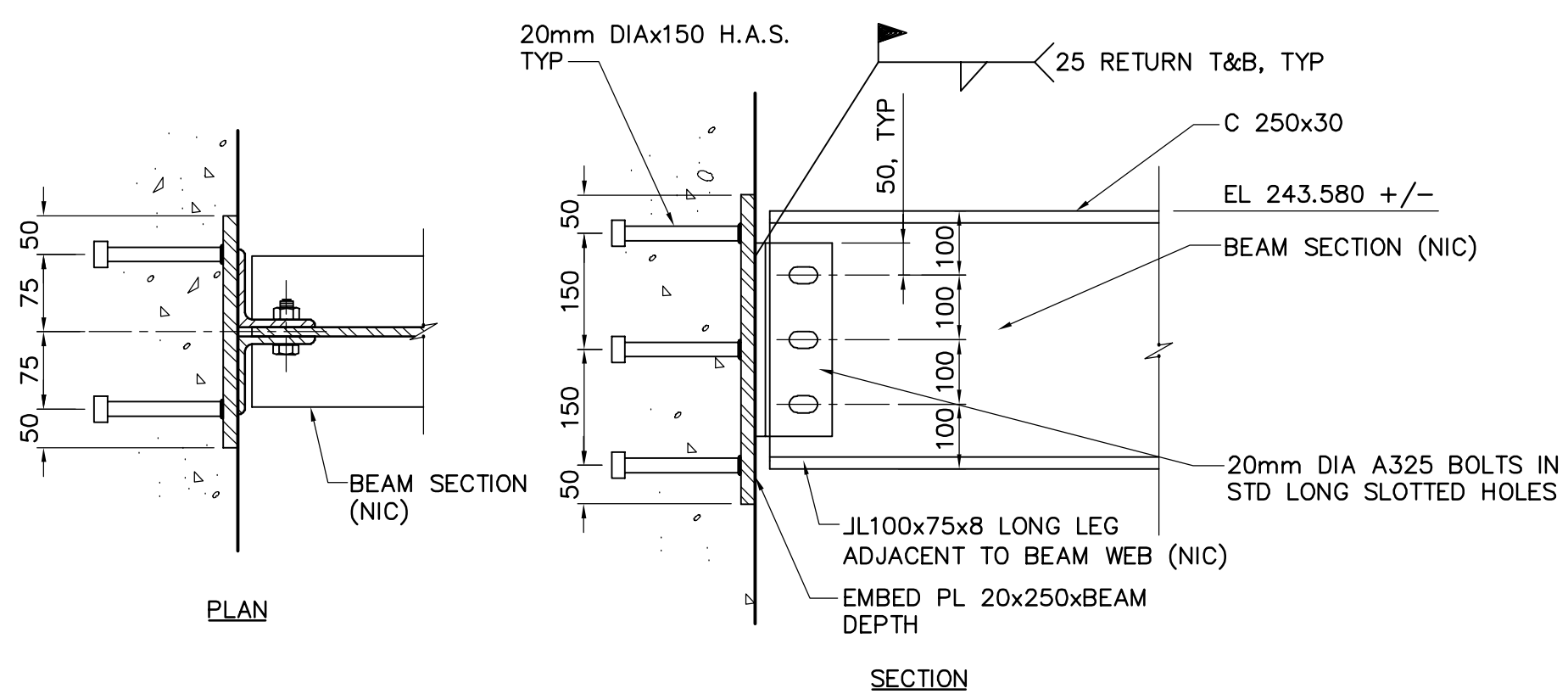
ELEVATION



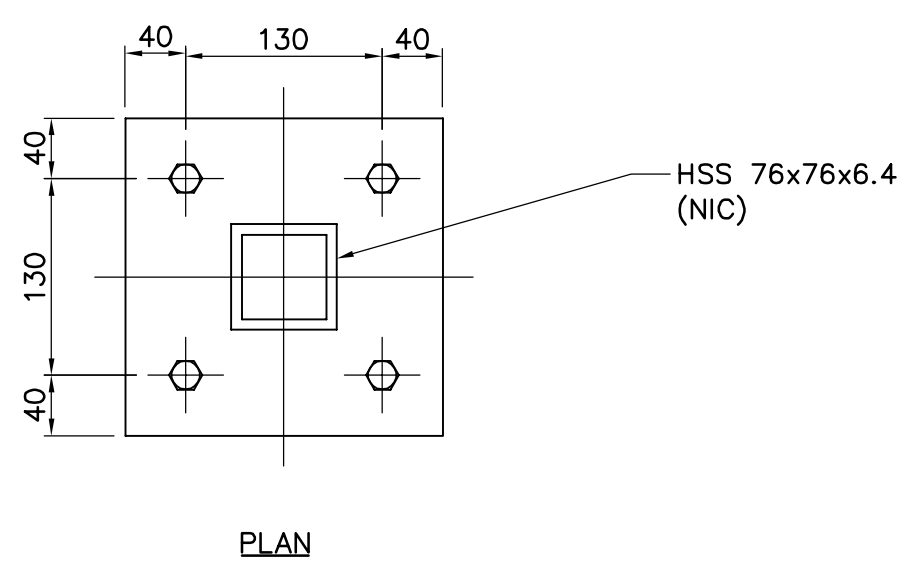
ELEVATION



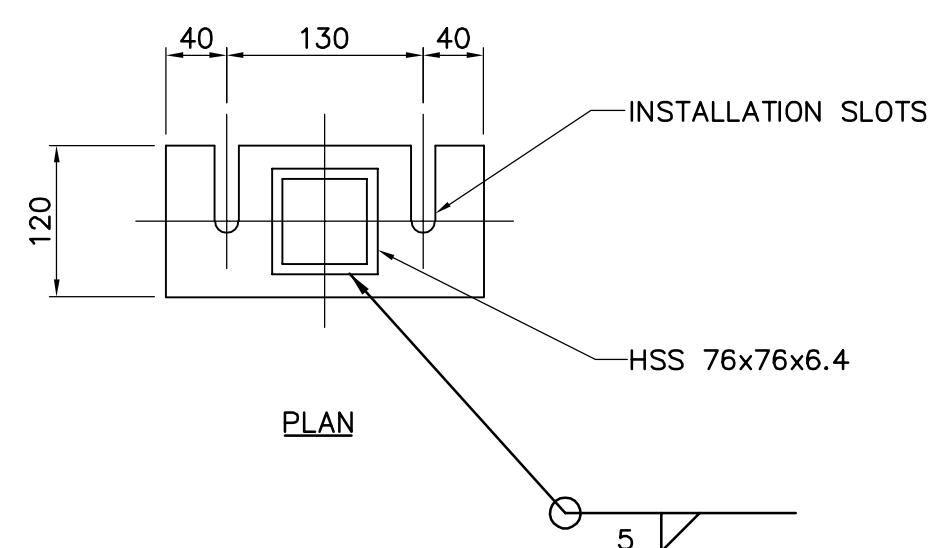
REINF BELOW EL 235.960  
9 PLAN DETAIL  
1:50



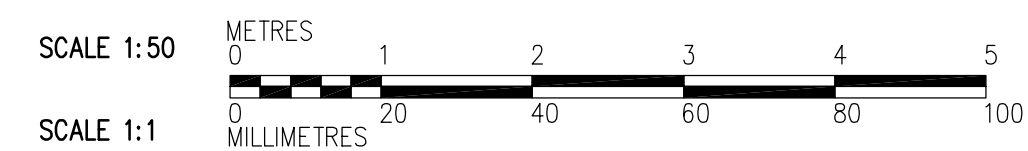
7 DETAIL  
NTS



5 DETAIL  
1:5



6 DETAIL  
1:5



<b>APECA</b> Certificate of Authorization CH2M HILL Canada Ltd. No. 1441 Expiry: April 30, 2006	<b>CH2MHILL</b> Frederickson Cooper ARCHITECTS		ENGINEER'S SEAL ORIGINAL SIGNED BY <b>D. KRUGER</b> 2006/02/06	<b>THE CITY OF WINNIPEG</b> WATER AND WASTE DEPARTMENT ENGINEERING DIVISION WATER TREATMENT PLANT RESIDUALS HANDLING FOUNDATIONS AND CONCRETE STRUCTURES STRUCTURAL RESIDUALS HANDLING AREA SECTIONS	CITY FILE NUMBER
	DESIGNED BY: <b>MFC</b>	CHECKED BY: <b>AP</b>			SHEET OF
	DRAWN BY: <b>RRL</b>	APPROVED BY: <b>DJT</b>	CITY DRAWING NUMBER		
	SCALE: <b>1:50</b>	RELEASED FOR CONSTRUCTION BY: <b>R. SOROKOWSKI</b>	<b>1-060R-A-S0209-001-00D</b>		

ISSUED FOR TENDER: 2006/02/03 MFC  
NO. REVISIONS DATE BY DATE: 2005/09/30 DATE: 2006/02/08