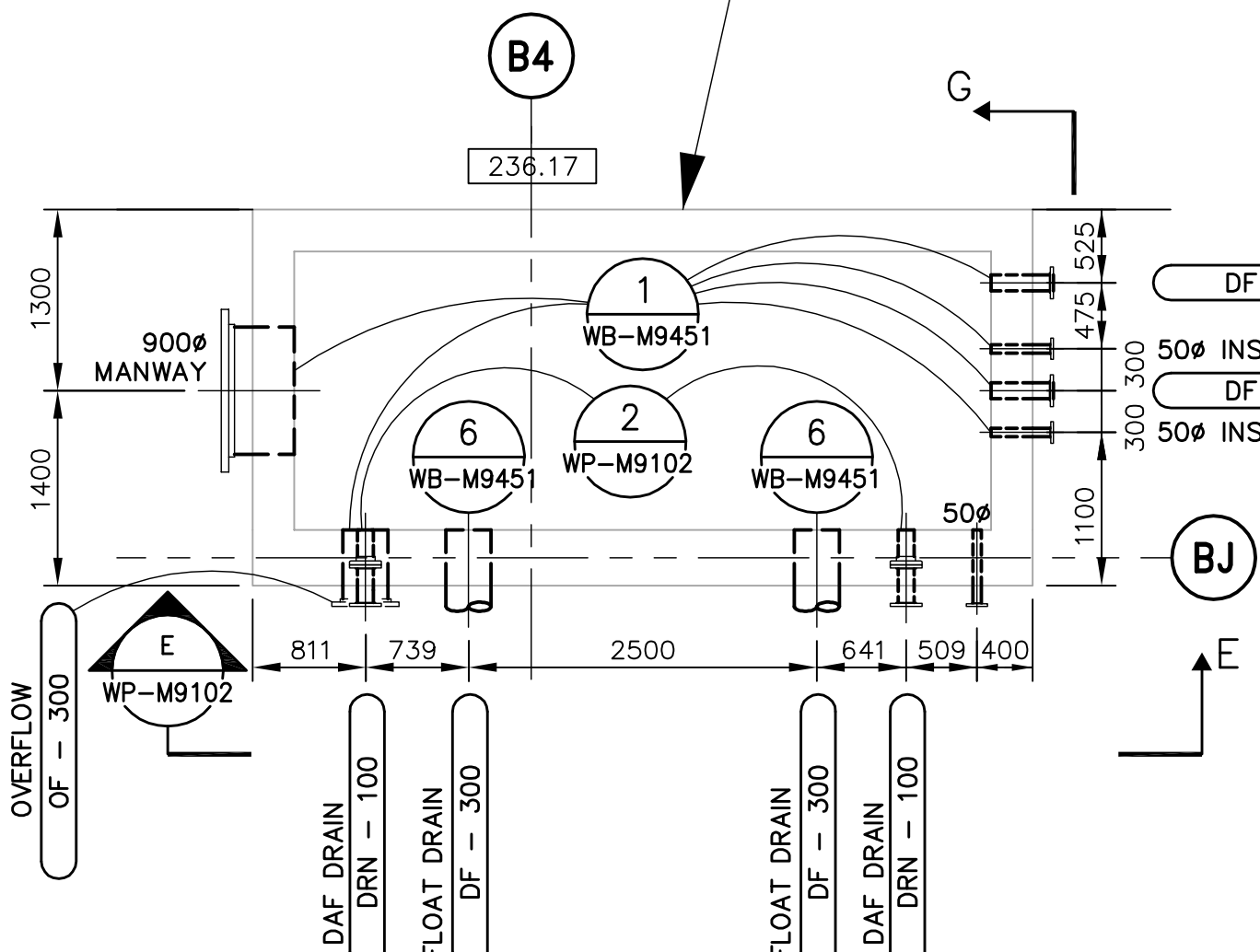
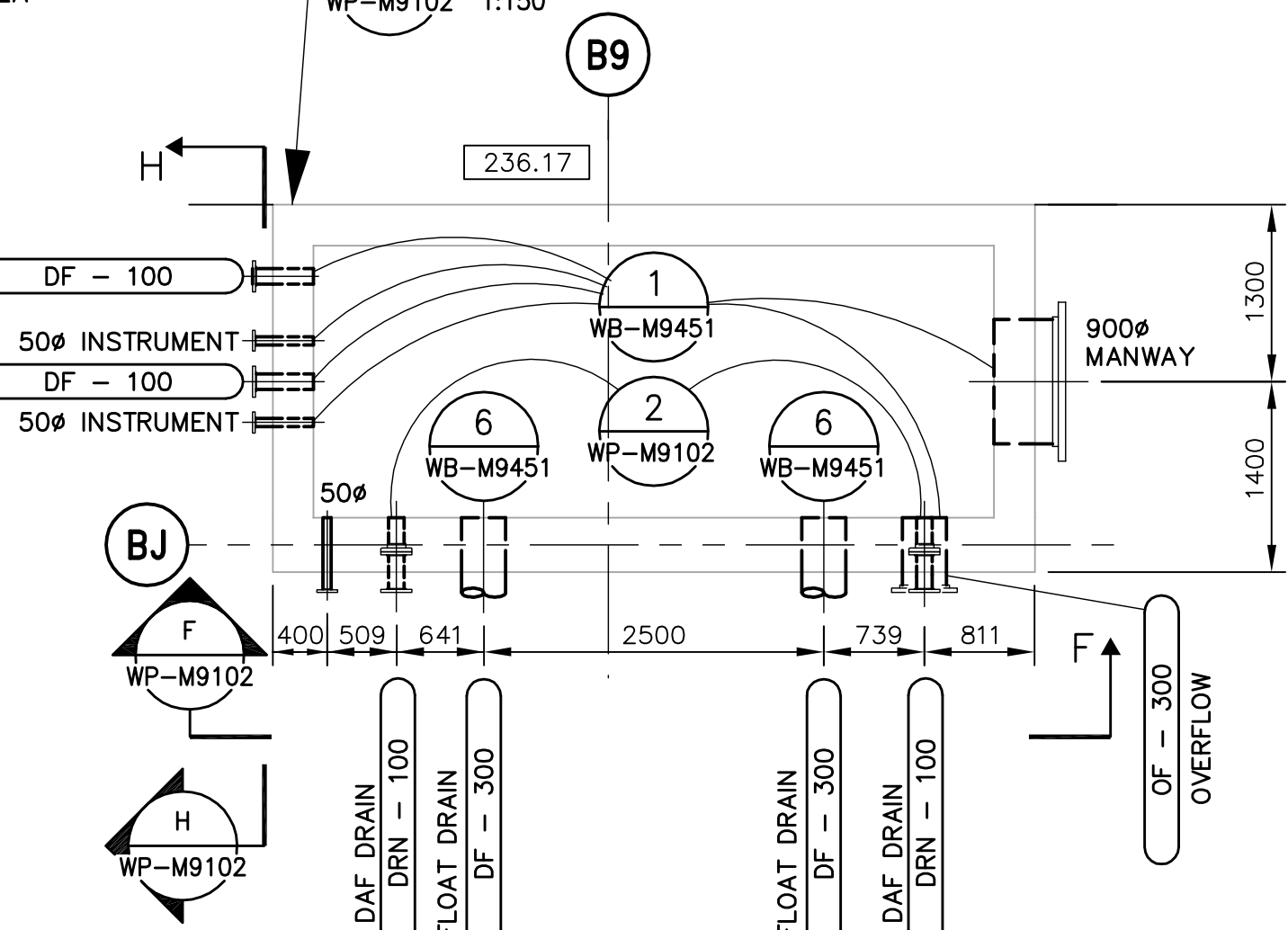


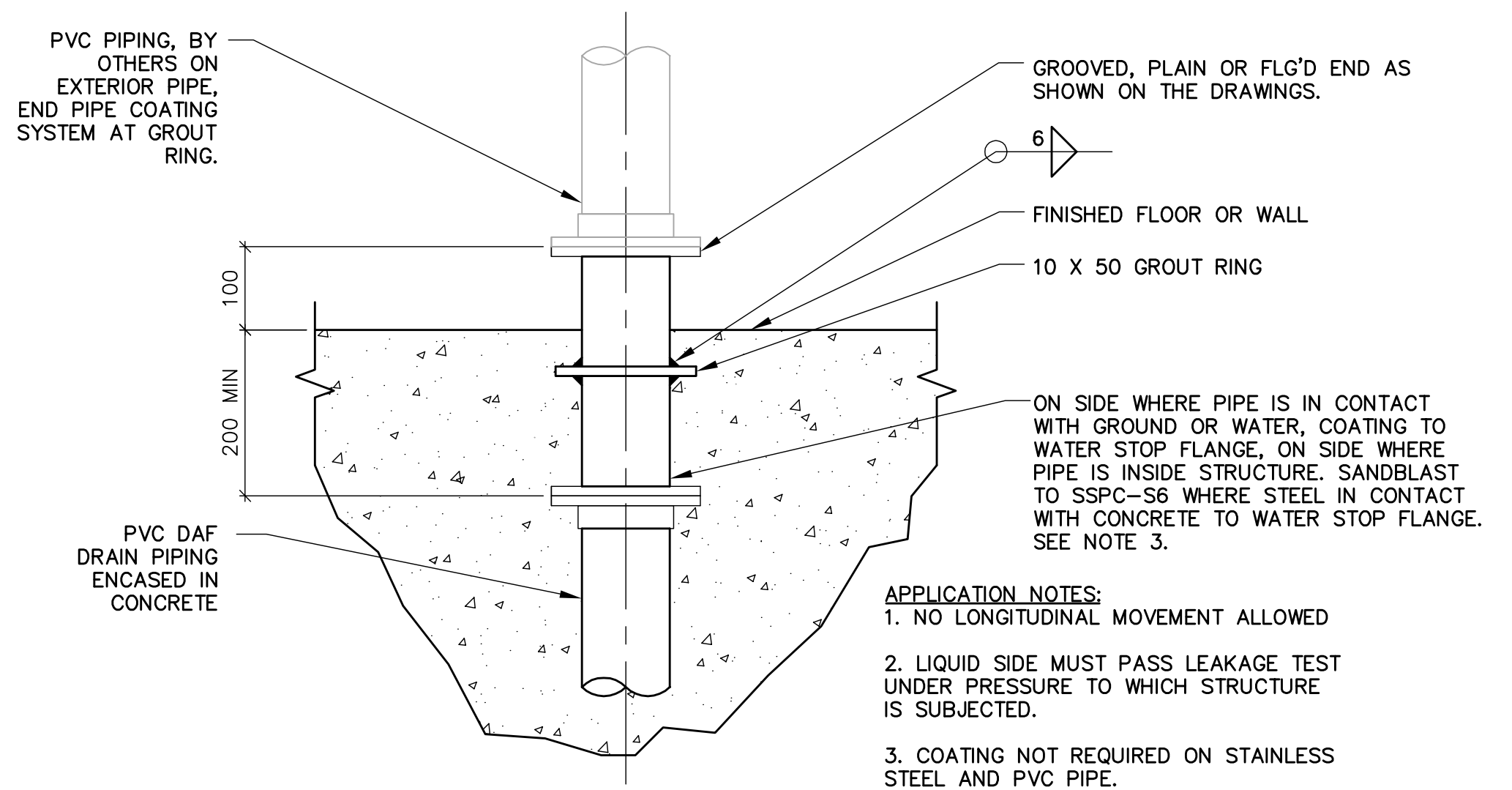
16 FIRST FLOOR PLAN - FLOAT COLLECTION SUMPS
WP-M9102 1:150



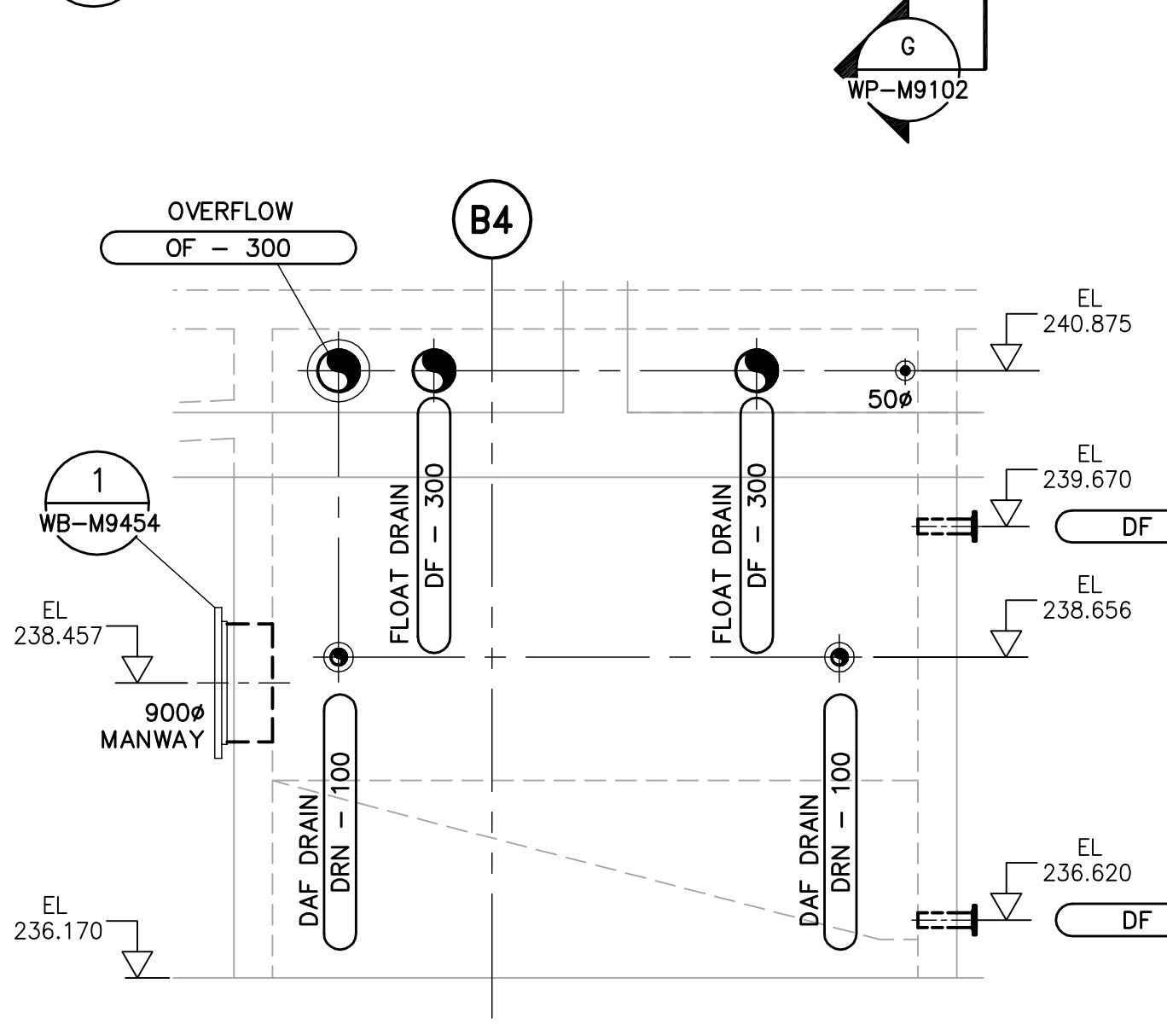
1 DETAILED PLAN - FLOAT COLLECTION SUMP 1
WP-M9102 1:50



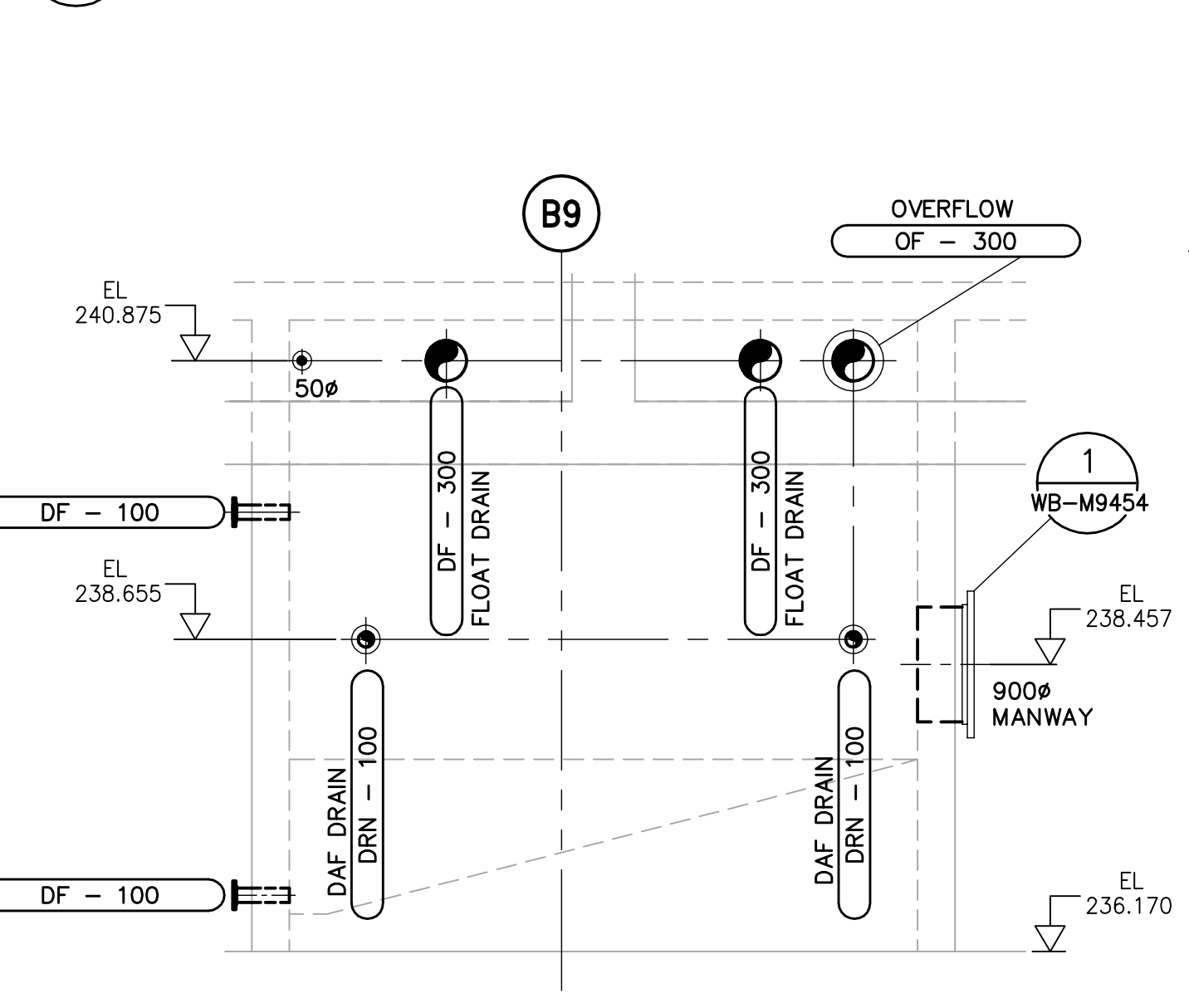
2 DETAILED PLAN - FLOAT COLLECTION SUMPS 2, 3, 4
WP-M9102 1:50



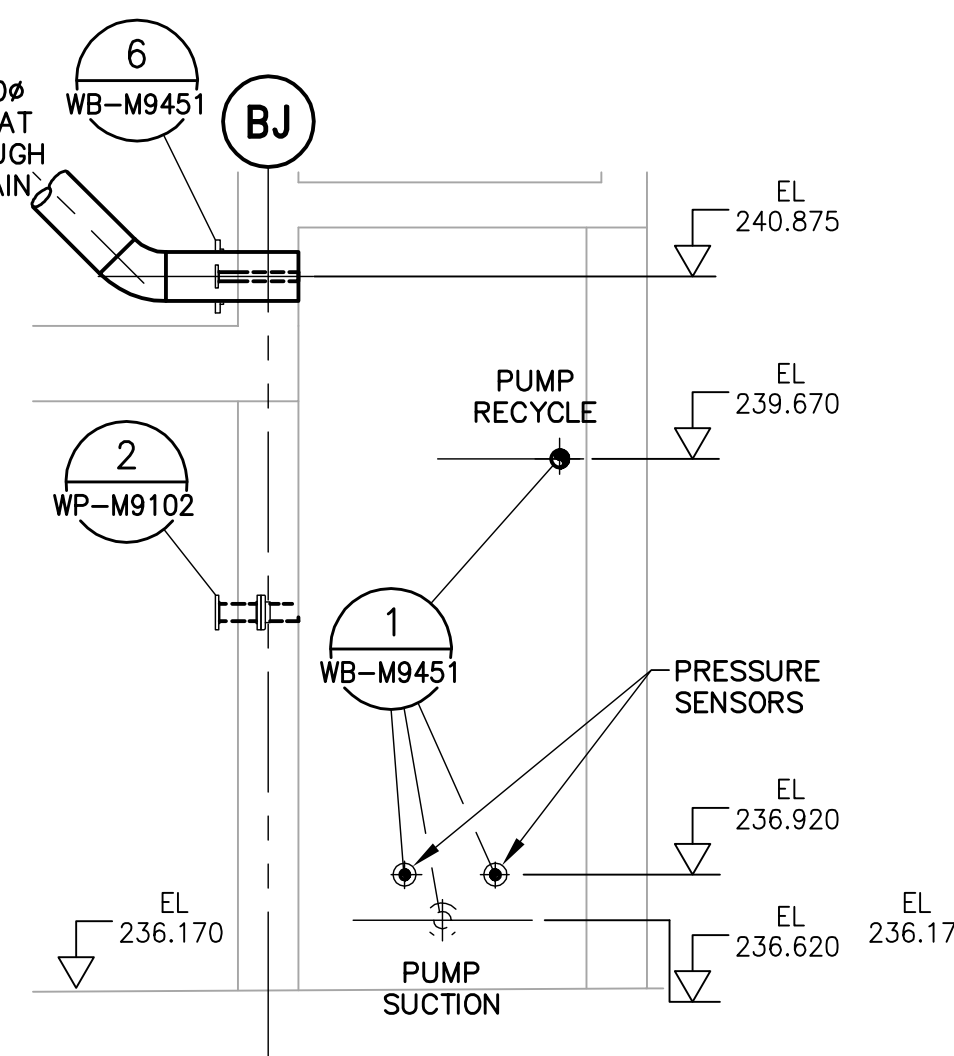
2 DETAIL - DAF DRAIN FLOOR/WALL PENETRATION
NTS



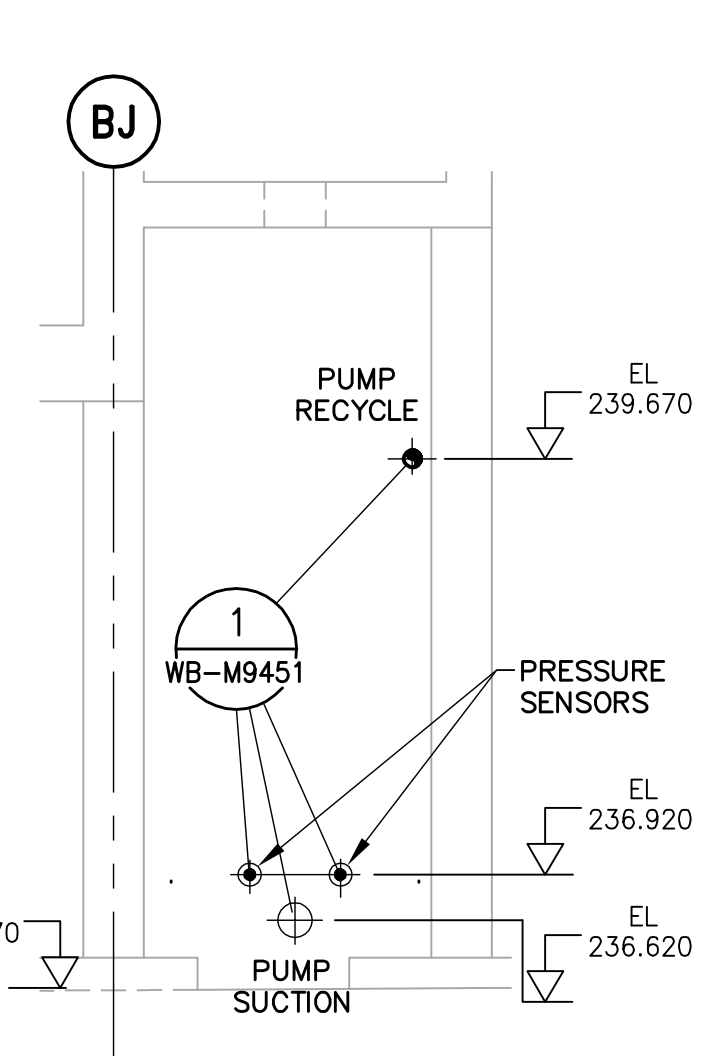
E SECTION - FLOAT COLLECTION SUMP 1
WP-M9102 1:50



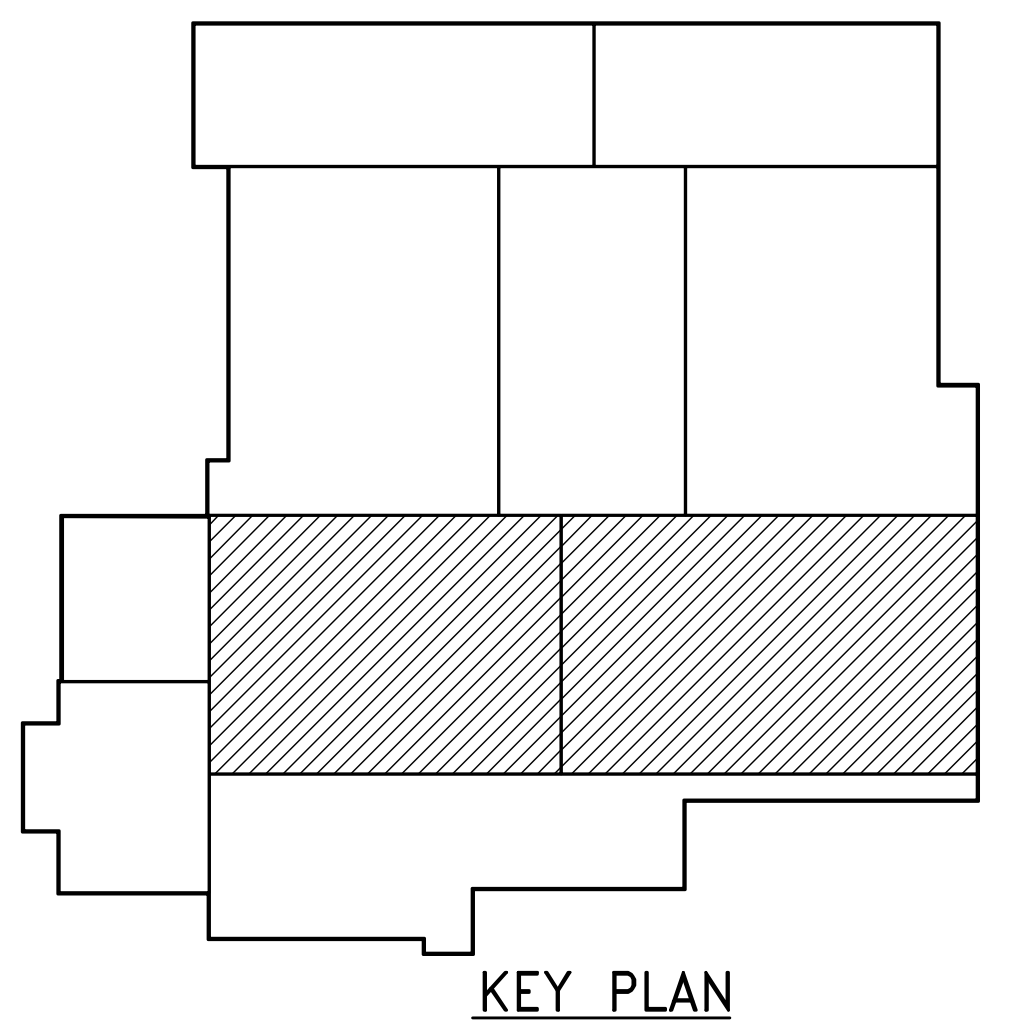
F SECTION - FLOAT COLLECTION SUMPS 2, 3, 4
WP-M9102 1:50



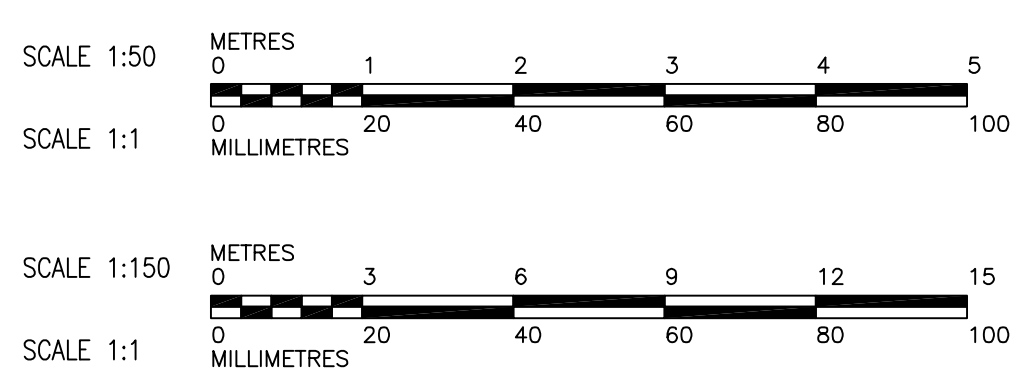
G SECTION
WP-M9102 1:50



H SECTION
WP-M9102 1:50



KEY PLAN



| | | | | | | |
|---|---|--|------------------|---|---|-------------------------------------|
| <p>Certificate of Authorization Earth Tech Canada Inc. No. 730 Expiry: April 30, 2006</p> | <p>Frederickson Cooper ARCHITECTS</p> | <p>A Tyco International Ltd. Company</p> | ENGINEER'S SEAL | <p>THE CITY OF WINNIPEG WATER AND WASTE DEPARTMENT ENGINEERING DIVISION</p> | | |
| | | | DESIGNED BY: KAS | | CHECKED BY: SRB | ORIGINAL SIGNED BY: S.R. BILEVICIUS |
| | | | DRAWN BY: PL | | APPROVED BY: DJT | 2006/02/07 |
| | | | SCALE: AS SHOWN | | RELEASED FOR CONSTRUCTION BY: R. SOROKOWSKI | CONSULTANT DRAWING NO. WP-M9102 |
| NO. REVISIONS | DATE | DATE | DATE | <p>WATER TREATMENT PLANT FLOCCULATION AND DAF FOUNDATIONS AND CONCRETE STRUCTURES</p> <p>PIPE EMBEDS FIRST FLOOR PLAN AND SECTIONS FLOAT COLLECTION SUMPS</p> | | |