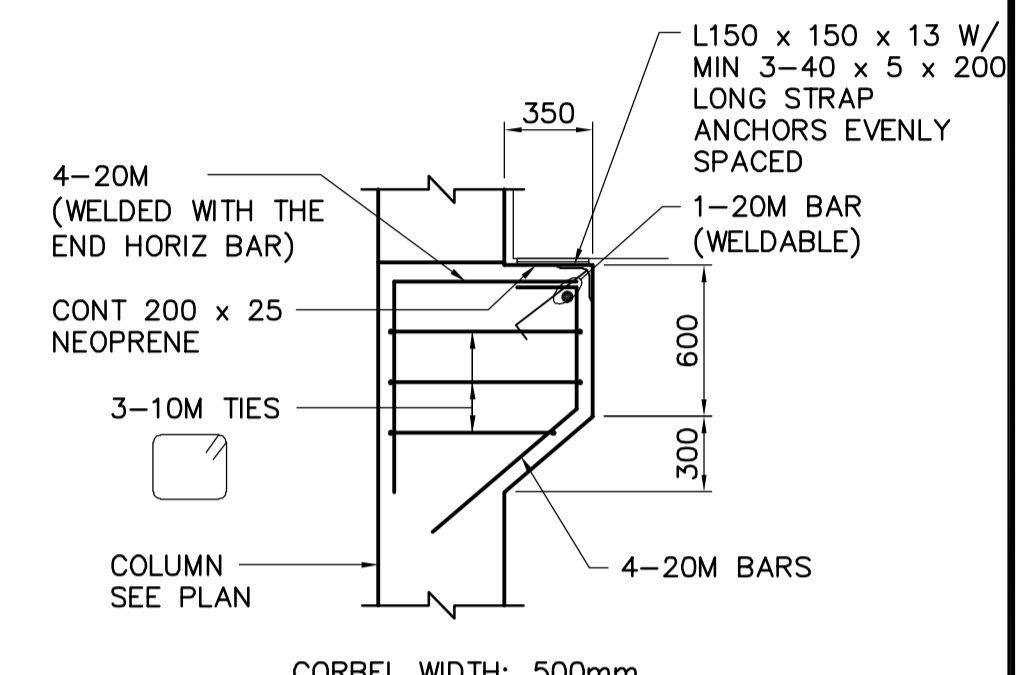
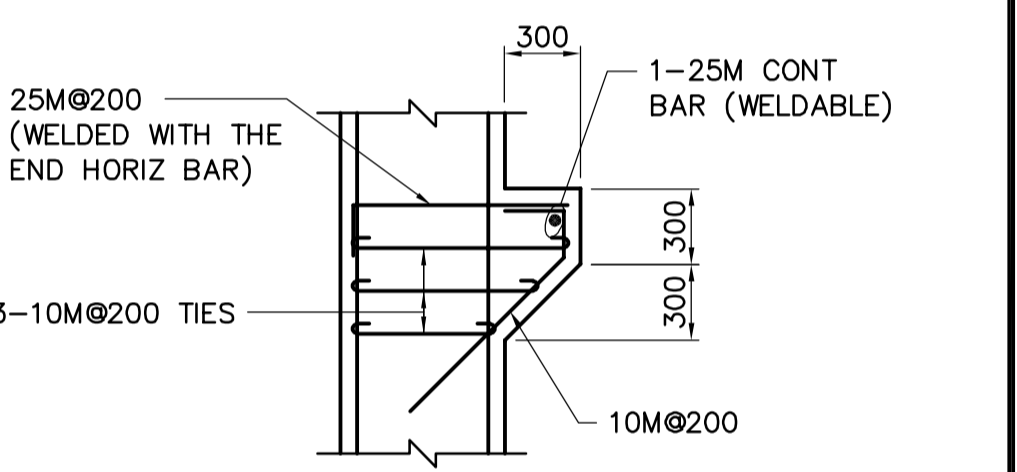


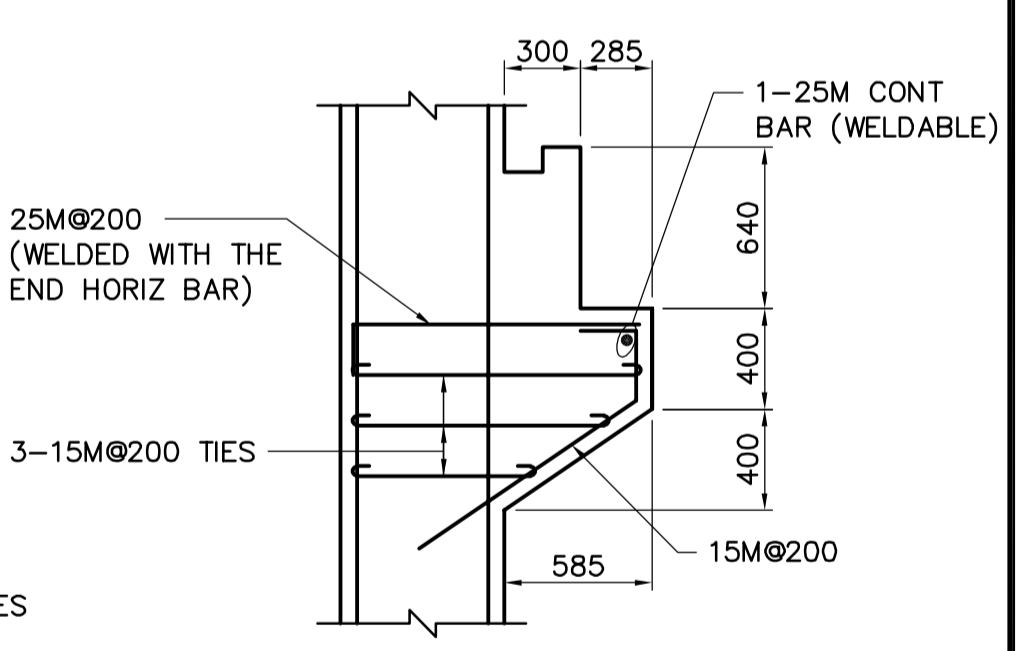
- NOTES:**
- SEE PLANS FOR SLAB REINFORCEMENT.
  - FOR BEAM SCHEDULE SEE DRAWING WO-S0515.
  - WATER PROOFING FROM EL. 230.250 TO 236.170 WEST WALL, SOUTH WALL, AND EAST WALL.
  - SLIP SHEET AND PROTECTION BOARD FROM EL. 230.250 TO 236.170 WEST WALL, SOUTH WALL, AND EAST WALL.



**CORBEL - TYPE C**  
N.T.S.



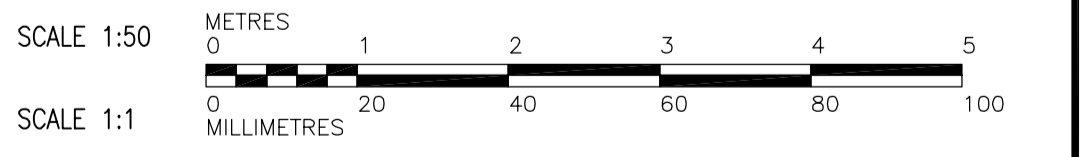
**CORBEL - TYPE B**  
N.T.S.



**CORBEL - TYPE A**  
N.T.S.

**A SECTION**  
WO-S0101 1:50

WO-S0111, WO-S0121  
WO-S0131, WO-S0141, WO-S0146



**APECA**  
Certificate of Authorization  
CH2M HILL Canada Ltd.  
No. 1441 Expiry: April 30, 2006

B.M. ELEV.			
DESIGNED BY	MH	CHECKED BY	AP
DRAWN BY	RL	APPROVED BY	DJT
SCALE:	1:50	RELEASED FOR CONSTRUCTION BY:	R. SOROKOWSKI
ISSUED FOR TENDER	2006/02/03	DATE	2005/08/10
NO. REVISIONS		DATE	2006/02/08

**CH2MHILL**  
Frederickson Cooper ARCHITECTS

**EarthTech**  
A Veeco International Ltd. Company

DESIGNED BY: MH  
CHECKED BY: AP  
DRAWN BY: RL  
APPROVED BY: DJT  
SCALE: 1:50  
RELEASED FOR CONSTRUCTION BY: R. SOROKOWSKI

ENGINEER'S SEAL  
ORIGINAL SIGNED BY: D. KRUGER  
2006/02/06  
CONSULTANT DRAWING NO.: WO-S0201

**THE CITY OF WINNIPEG**  
WATER AND WASTE DEPARTMENT  
ENGINEERING DIVISION

WATER TREATMENT PLANT  
OZONE FOUNDATIONS AND CONCRETE STRUCTURES

STRUCTURAL  
OZONATION AREA SECTION

CITY FILE NUMBER  
SHEET OF  
CITY DRAWING NUMBER  
1-06010-A-00201-001-000