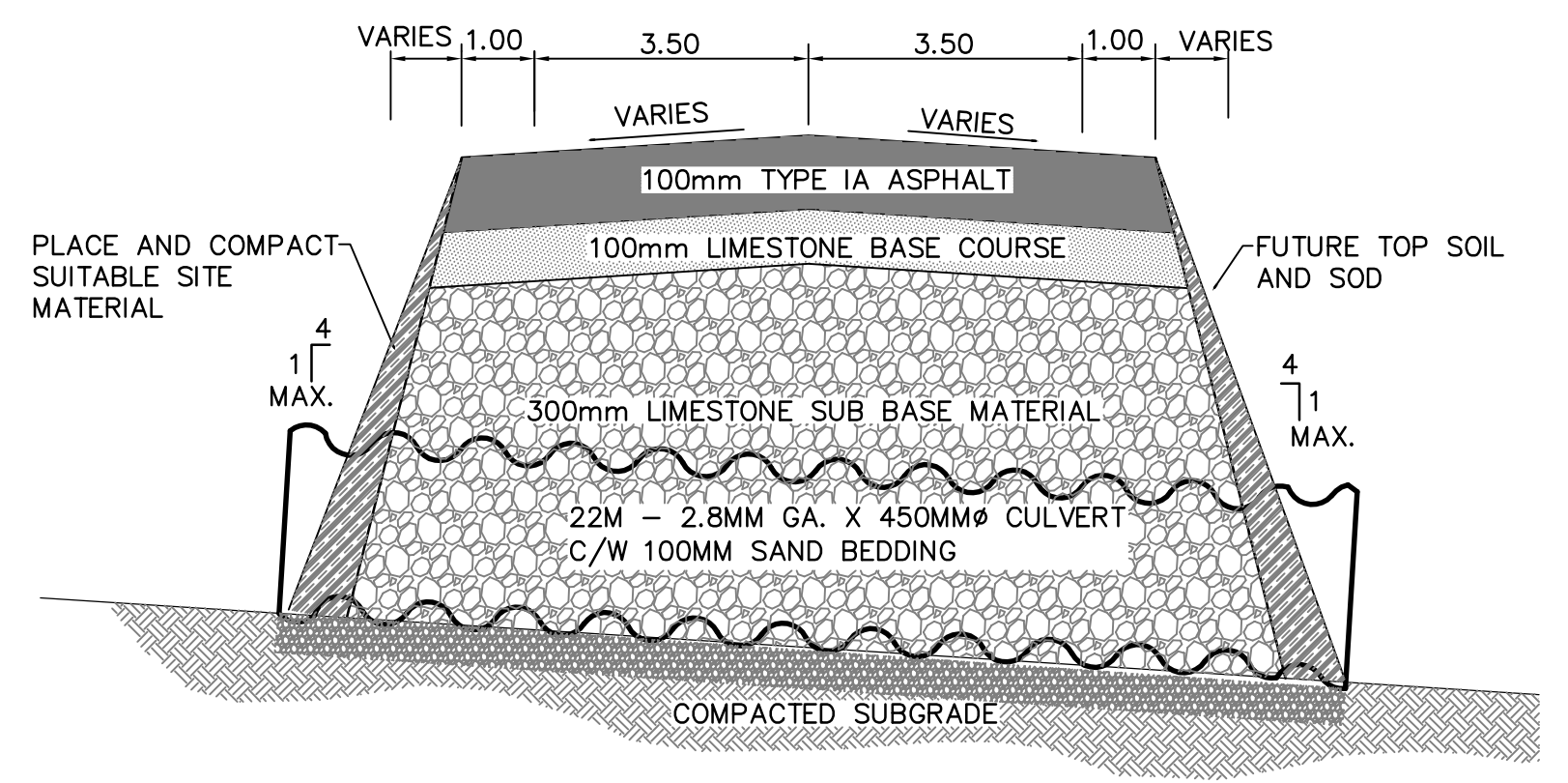
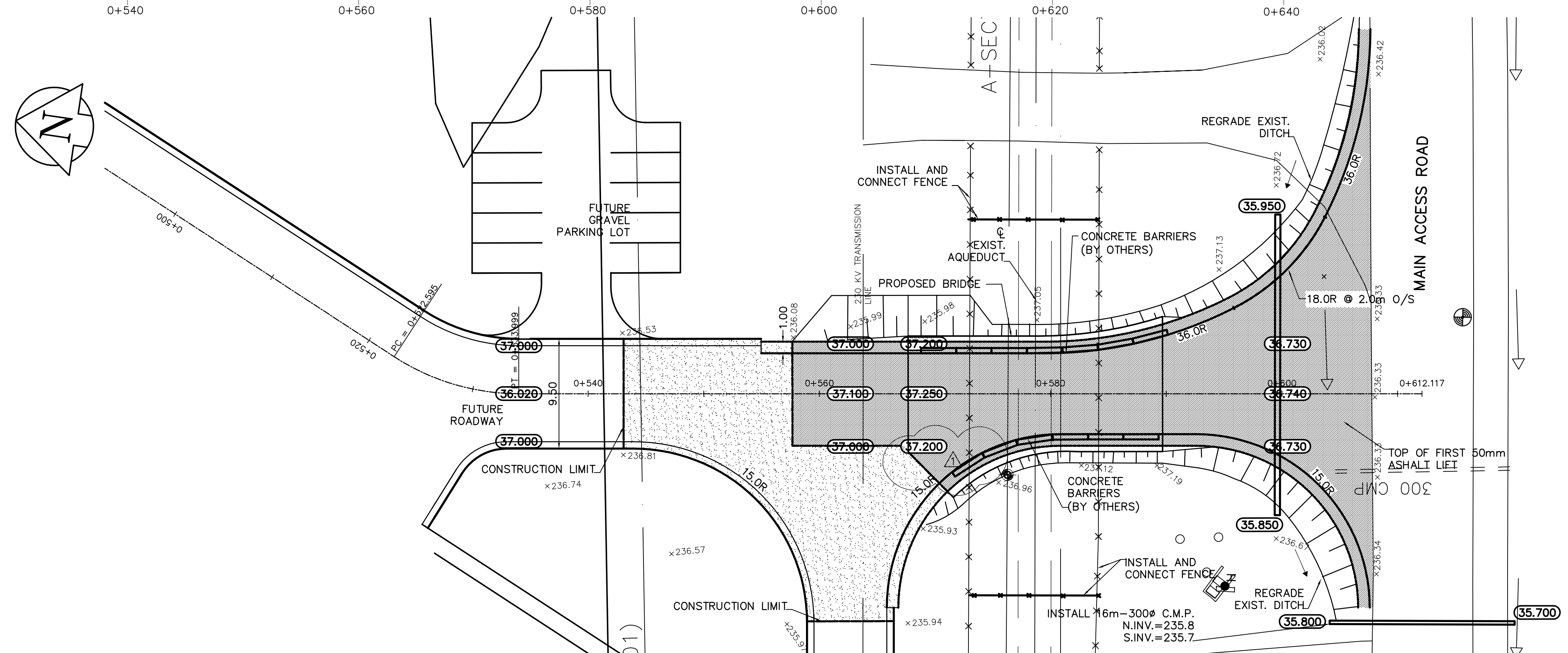


KEYPLAN  
SCALE N.T.S.



TYPICAL SECTION AT CULVERT  
SCALE N.T.S.

REFERENCE NOTES:  
A. ADD 200.00 TO OBTAIN GEODETIC DATUM  
B. ALL EXISTING UNDERGROUND UTILITIES SHALL BE CONFIRMED PRIOR TO CONSTRUCTION.

A. DETAIL NUMBER  
B. DRAWING WHERE DETAIL SHOWN  
C. CROSS REFERENCE TO DRAWING WHERE DETAIL INITIALLY TAKEN

METRIC  
WHOLE NUMBERS INDICATE MILLIMETRES  
DECIMALIZED NUMBERS INDICATE METRES

150 mm W.M.	WATERMAIN	150 mm W.M.	HYDRO M.T.S.	CONCRETE ASPHALT	PROPERTY LINE	SURVEY BAR	ELEVATION	TREE	ANODE	CONCRETE SIDEWALK	FENCE
300mm L.D.S.	LAND DRAINAGE SEWER	300mm L.D.S.	WASTEWATER SEWER	250mm W.W.S.	MANHOLE	CATCH BASIN	CURB INLET	JUNCTIONS	CULVERT	GAS	
EXISTING	LEGEND - PLAN	PROPOSED	EXISTING	LEGEND - PLAN	PROPOSED	EXISTING	LEGEND - PLAN	PROPOSED	EXISTING	LEGEND - PLAN	PROPOSED

**APEGM**  
Certificate of Authorization  
Earth Tech Canada Inc.  
No. 730 Expiry: April 30, 2006

B.M. ELEV.			
01	583-2005 ADDENDUM 3	06/03/09	KC
00	ISSUED FOR TENDER	06/02/07	JC
NO. REVISIONS	DATE	BY	DATE

**CH2M HILL**  
Frederickson Cooper ARCHITECTS

**EarthTech**  
A Tech International Ltd. Company

DESIGNED BY	JNC	CHECKED BY	JNC
DRAWN BY	PAAP/BC	APPROVED BY	DJT
SCALE:	1:250	RELEASED FOR CONSTRUCTION BY:	R. SOROKOWSKI
DATE	2005/08/29	DATE	2006/02/07

ENGINEER'S SEAL  
ORIGINAL SIGNED BY  
J.N. CRANG  
2006/02/07

**THE CITY OF WINNIPEG**  
WATER AND WASTE DEPARTMENT  
ENGINEERING DIVISION

WATER TREATMENT PLANT  
AQUEDUCT BRIDGES  
FOUNDATIONS AND CONCRETE STRUCTURES

CIVIL  
ROADWORKS AND MIDDLE BRIDGE  
PLAN-PROFILE

CITY FILE NUMBER  
SHEET OF  
CITY DRAWING NUMBER  
**1-060N-A-C0162-001-0D**

CONSULTANT DRAWING NO.  
WN-C0162