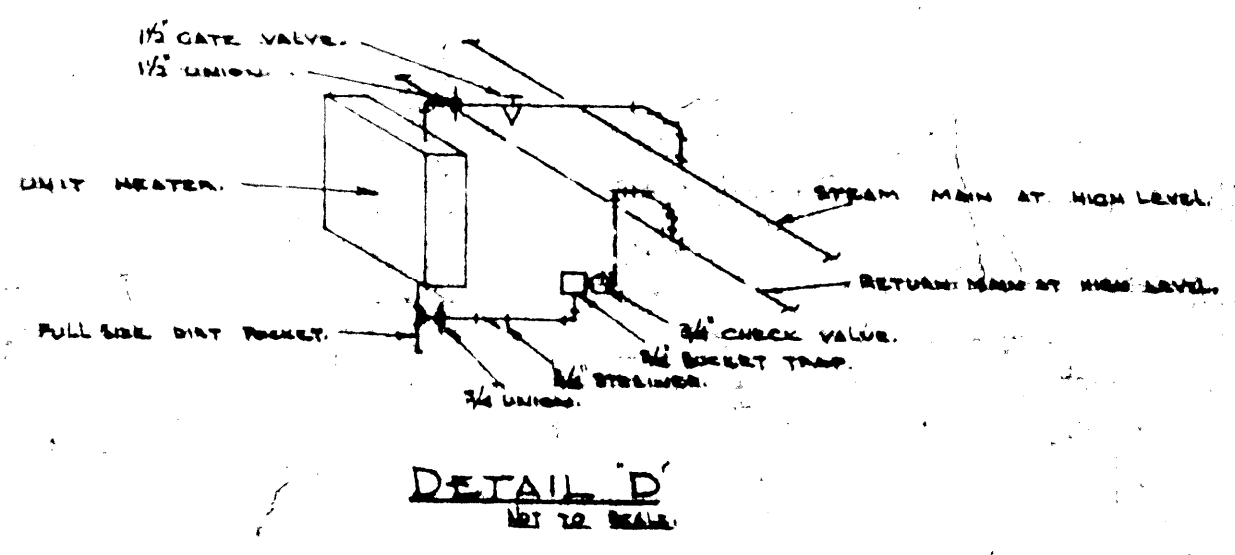
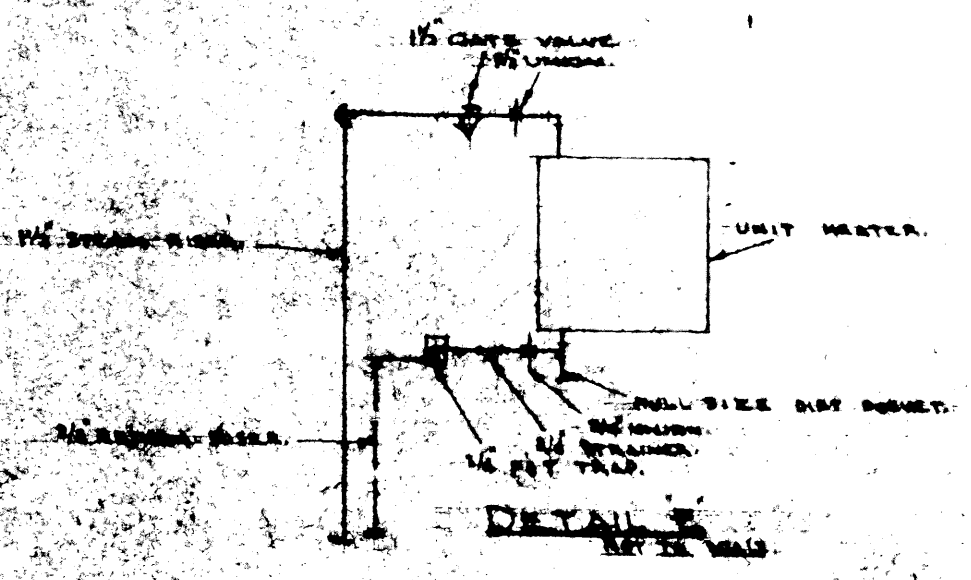


NOTE: CONNECTIONS TO CONNECTORS TO BE 1/2" STEAM, 1/2" RETURN

NOTE: ALL RETURN RISERS ON THIS PLAN TO BE INSULATED.



REVISIONS		
NO.	DESCRIPTION	DATE

WINNIPEG ENTERPRISES CORP
ARENA
WOLEVER AVENUE

HEATING & VENTILATING
CONCOURSE LEVEL

THE CONTRACTOR SHALL CHECK ALL DIMENSIONS AND OTHER DATA FROM THE JOB AND REPORT ANY DISCREPANCY TO THE ARCHITECTS FOR ADJUSTMENT.



MOODY AND MOORE
3-08