

### LUMINAIRE SCHEDULE

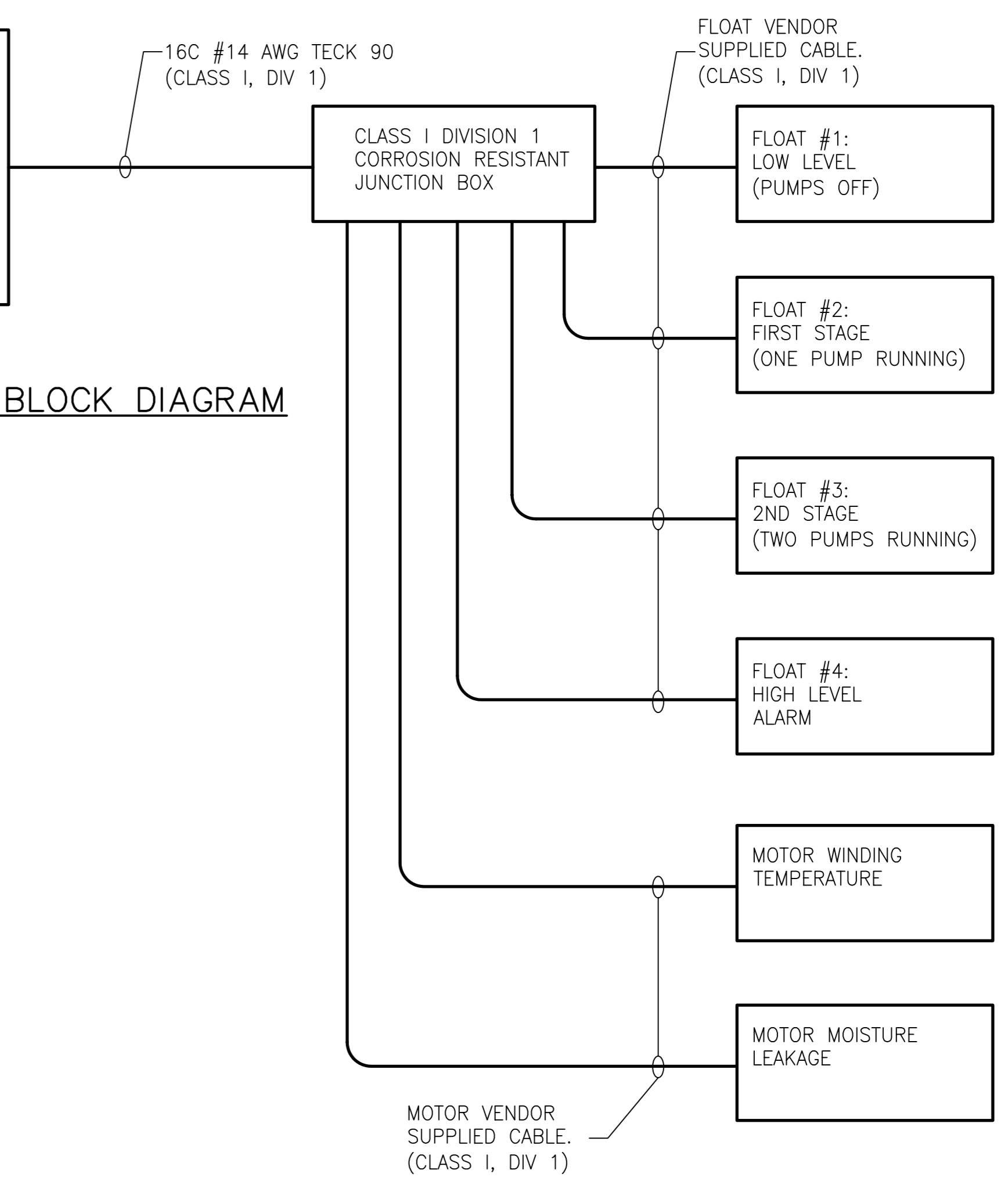
TYPE	MANUFACTURER	CATALOGUE NUMBER.	LAMPS		VOLTS	MOUNTING	COMMENTS	NOTES
			QTY.	TYPE				
A	CROUSE HINDS	EVCX-100W-A19 C/W WIRE GUARD	1	100W A19	120	S/W	CLASS I DIV I HAZARDOUS FIXTURE	

**GENERAL NOTES:**  
1. PROVIDE ALL MOUNTING ACCESSORIES AS REQUIRED.

S = SURFACE    W = WALL    TB = T-BAR  
R = RECESSED    V = VALANCE    DW = DRYWALL  
C = CEILING    P = PENDANT    CH = CHAIN  
SH = STEM HUNG    IS = INSULATED SOFFIT

NEMA 1 PUMPING STATION DUPLEX PUMP CONTROLLER (IN WEATHERPROOF NEMA 4 ENCLOSURE). PRODUCT SHALL BE GOULDS SES SERIES CONTROLLER OR APPROVED EQUAL. CONTROLLER SHALL BE COMPLETE WITH 2 HOA SWITCHES, RED ALARM LIGHT, REMOTE ALARM CONTACTS FOR HIGH LEVEL, MOTOR WINDING TEMPERATURE, AND MOTOR MOISTURE INGRESS.

**DUPLEX PUMP BLOCK DIAGRAM**  
SCALE: NTS



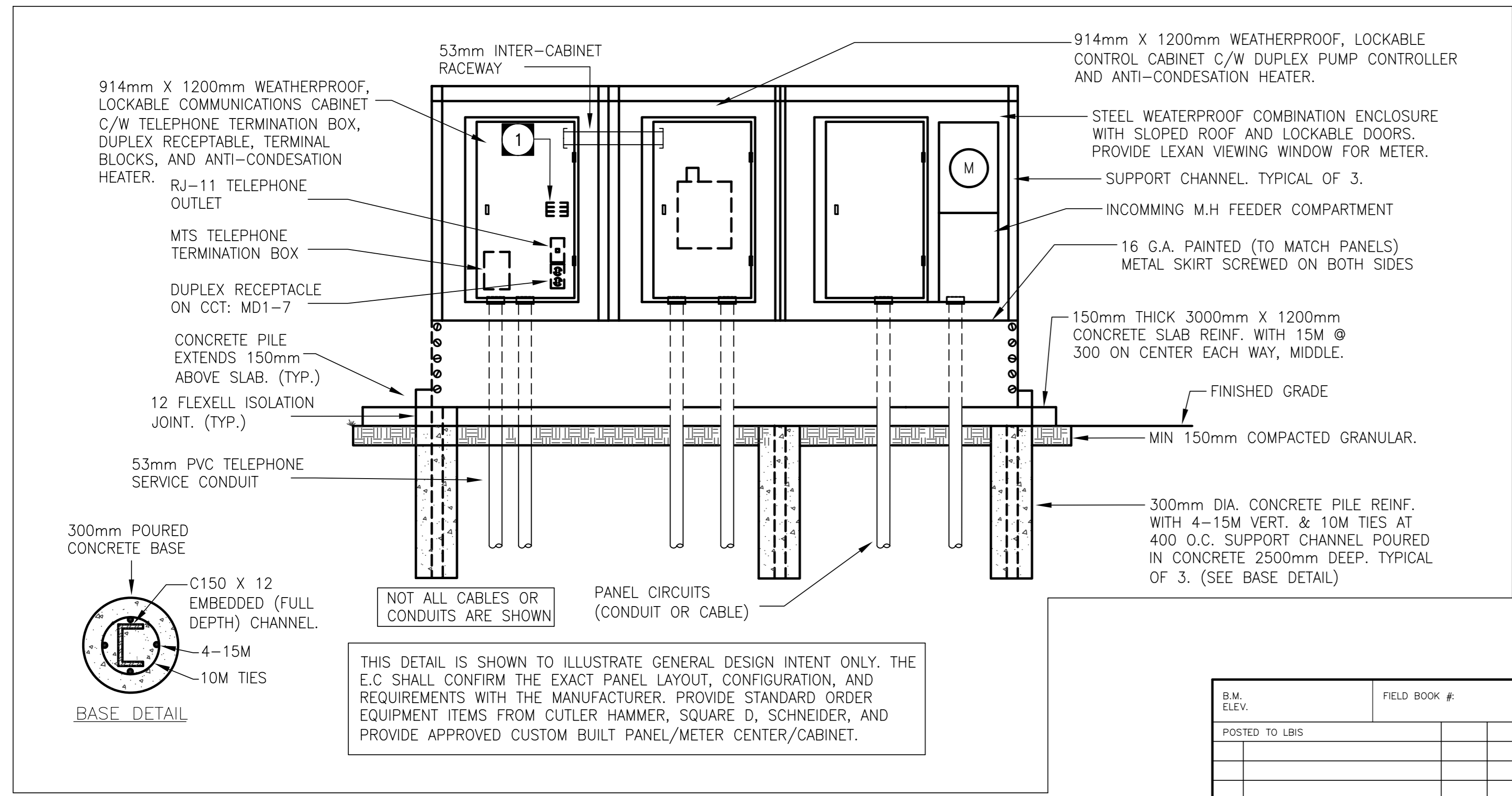
100A  
2P

VOLTAGE: 120/240  
BUS: 100A      PHASE: 1  
WIRE: 3

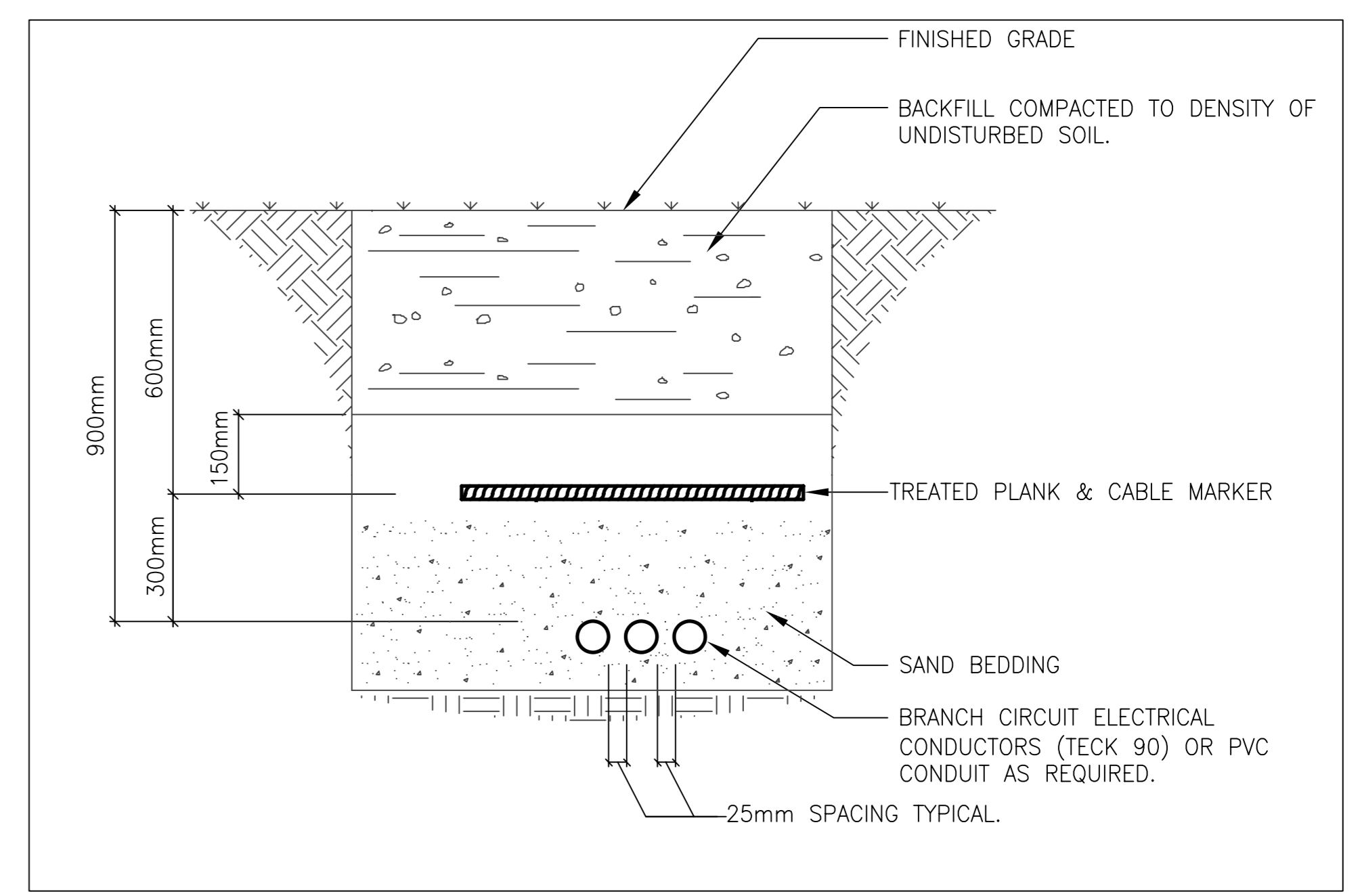
**PANEL: MD1**

DESCRIPTION	LOAD WATTS	BKR SIZE	CIRCUIT	BKR SIZE	LOAD WATTS	DESCRIPTION			
LIGHTING	800	15	1	2	60	DUPLEX CONTROL: 'DC1'			
EXHAUST FAN: EF-1	667	15	3	4					
ANTI-CONDENSATION HEATER	200	15	5	6		SPACE			
TELEPHONE CAB. RECEPTACLE	500	15	7	8		SPACE			
SPARE		15	9	10		SPACE			
SPARE		15	11	12		SPACE			
SPACE			13	14		SPACE			
SPACE			15	16		SPACE			
SPACE			17	18		SPACE			
MISC.	0.7 kW		LTG.	0.8 kW		MOT.	8487 kW	TOTAL	10 kW

- GENERAL NOTES**
- CONFIRM ALL ELECTRICAL REQUIREMENTS WITH ALL DRAWINGS AND SPECIFICATIONS. PROVIDE ALL ELECTRICAL CONNECTIONS AS SPECIFIED THEREIN.
  - WIRING AND INSTALLATION METHODS SHALL COMPLY WITH ALL CODES AND STANDARDS TO SUIT THE AREA CLASSIFICATION INDICATED.
  - PROVIDE ALL DEVICES/ITEMS SHOWN HEREIN, PLUS ANY ADDITIONAL ACCESSORIES AS REQUIRED FOR A COMPLETE INSTALLATION.
  - PROVIDE CLASS I, DIV. 1 SEALS AT THE CABLE ENTRY POINTS INTO THE EXTERIOR PANELS / ENCLOSURES FOR ALL CABLES WHICH ENTER THE PUMPING STATION.
- CONCRETE NOTES**
- CONCRETE: TO CSA A23.1 LATEST EDITION, 30MPA TYPE 50 CEMENT, 20mm AGREGATE, 5-8% AIR.
  - REINFORCING STEEL: TO CSA G30.18 LATEST EDITION, GRADE 400W.
  - STRUCTURAL STEEL: TO CSA G40.21, LATEST EDITION, GRADE 300W OR 350W.
- SPECIFIC NOTES**
- PROVIDE SAK4 TERMINAL BLOCKS C/W ALL ACCESSORIES (SUCH AS MOUNTING RAIL, END BLOCKS, ETC), TERMINATE 6#14 AWG ON TERMINAL BLOCKS FROM DUPLEX PUMP CONTROLLER HIGH LEVEL ALARM (ACTIVATED THROUGH FLOAT #4) RELAY OUTPUT ALARM, MOTOR WINDING TEMPERATURE ALARM, AND MOTOR MOISTURE ALARM CONTACTS.



**WEATHERPROOF PANEL / CONTROL CABINET ENCLOSURES**  
SCALE: NTS



**BRANCH CIRCUIT TRENCH DETAIL**  
SCALE: NTS

**APEGM**  
Certificate of Authorization  
SNC-Lavalin Engineers & Constructors Inc. (MB)  
No. 2365    Expiry: April 30, 2006

B.M. ELEV.	FIELD BOOK #	<b>CITY OF WINNIPEG WATER AND WASTE ENGINEERING DIVISION</b>		ENGINEER'S SEAL	<b>THE CITY OF WINNIPEG WATER AND WASTE DEPARTMENT</b>
POSTED TO LBIS		DESIGNED BY: DEB	CHECKED BY: EMR	ORIGINAL SIGNED: E.M.RYCZKOWSKI 09/22/05	
		DRAWN BY: DEB	APPROVED BY: EMR		2005 CRESCENT DRIVE WASTEWATER SEWER AND PUMPING STATION CONSTRUCTION
					WASTEWATER PUMPING STATION
					ELECTRICAL SCHEDULES AND DETAILS
2 ISSUED FOR TENDER	09/22/05	EMR	HOR. SCALE: 1:100	RELEASED FOR CONSTRUCTION	SHEET 9 OF 9
1 ISSUED FOR OWNER REVIEW	09/14/05	EMR	VERTICAL: 1:100		CITY DRAWING NUMBER
NO. REVISIONS	DATE	BY	DATE	DATE	05696

BID OPPORTUNITY: 576-2005  
FILENAME: Crescent E4.dwg  
PLOT DATE: 2005 09 29