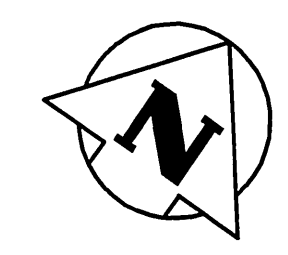
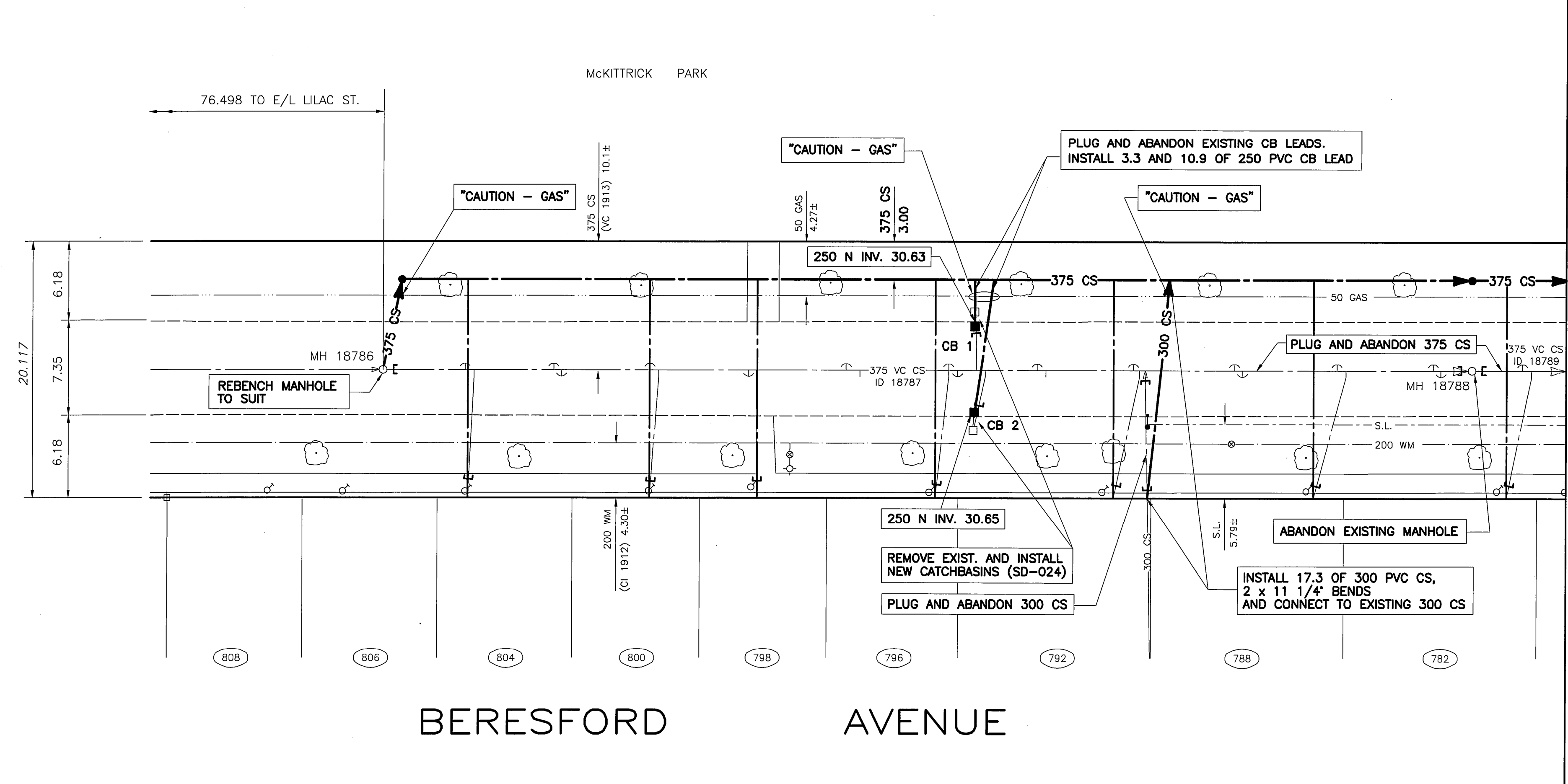


SEWER CONNECTION DATA					
HOUSE No.	SIZE	JUNCTION LOCATION	PL INV	LOCATION AT PROPERTY LINE	COMMENTS
No. 782	-	81.4 W OF 1ST MH W OF COCKBURN	-	2.4 WEL	
No. 788	-	10.7 W OF 2ND MH W OF COCKBURN	-	2.4 WEL	
No. 792	-	26.2 W OF 2ND MH W OF COCKBURN	-	12.3 EWL	
No. 796	-	41.1 W OF 2ND MH W OF COCKBURN	-	1.8 WEL	
No. 798	-	56.4 W OF 2ND MH W OF COCKBURN	-	5.5 WEL	
No. 800	-	64.3 W OF 2ND MH W OF COCKBURN	-	6.1 EWL	
No. 804	-	79.2 W OF 2ND MH W OF COCKBURN	-	2.4 EWL	
No. 806	-	2.1 W OF 3RD MH W OF COCKBURN	-	3.4 EWL	
No. 808	-	8.2 W OF 3RD MH W OF COCKBURN	-	2.3 WEL	



MANHOLE INFORMATION		
MANHOLE NUMBER	MANHOLE TYPE	WORK REQUIRED
18786	PRECAST	NO REPAIRS REQUIRED
18788	PRECAST	REMOVE AND REPLACE TOP 1.5m OF RISER REPLACE FRAME AND COVER

CATCHBASIN INFORMATION	
CATCHBASIN NUMBER	WORK REQUIRED
CB 1	REMOVE AND REPLACE
CB 2	REMOVE AND REPLACE

- GENERAL NOTES:**
- CHAINAGE IS ALONG NORTH PROPERTY LINE OF BERESFORD AVENUE.
- CONSTRUCTION NOTES:**
- ALL BACKFILL IN BOULEVARDS TO BE CLASS 5.
 - ALL BACKFILL IN PAVEMENT TO BE CLASS 3.
 - INSTALL SEWER USING TRENCHLESS METHODS.
 - INSTALL NEW SEWER SERVICES TO PROPERTY LINE.
 - ALL CATCHBASIN LEADS ARE 250 PVC AT A MINIMUM 1.0% UNLESS OTHERWISE NOTED.
 - CONFIRM LOCATION OF ALL SEWER SERVICES WITHIN RENEWAL LIMITS.

SEE DRAWING 05635

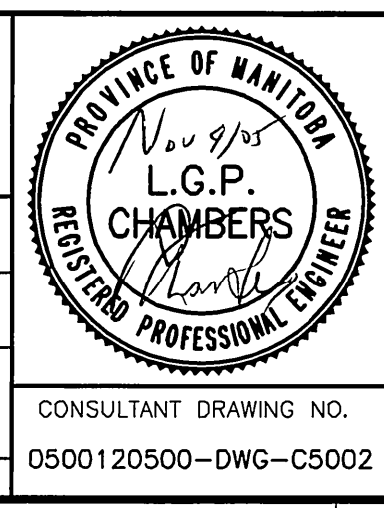
EXISTING	LEGEND-PLAN	PROPOSED	EXISTING	LEGEND-PLAN	PROPOSED	EXISTING	LEGEND-PLAN	PROPOSED
150 WM	WATERMAIN	150 WM	BEND	ANCHOR	LOCATION APPROVED UNDERGROUND STRUCTURES	B.M. CITY OF WINNIPEG 53-017	ELEV. 232.678m	F.B. 2091
400 FM	FEEDERMAIN	400 FM	TEE	TREE				
300 LDS	LAND DRAINAGE SEWER	300 LDS	CURB STOP	SURVEY BAR				
250 WWS	WASTEWATER SEWER	250 WWS	PLUG	TRAFFIC SIGNAL				
300 CS	COMBINED SEWER	300 CS	MANHOLE	GAS				
200 FCM	FORCEMAIN	200 FCM	CATCHBASIN	HYDRO				
	JUNCTIONS		CURB INLET	MTS				
	HYDRANT		ADDRESS	SIDEWALK				
	VALVE		HYDRO POLE	CURB				
	REDUCER		LIGHT STANDARD					

NOTE: LOCATION OF UNDERGROUND STRUCTURES AS SHOWN ARE BASED ON THE BEST INFORMATION AVAILABLE. BUT NO GUARANTEE IS GIVEN THAT ALL EXISTING UTILITIES ARE SHOWN OR THAT THE GIVEN LOCATIONS ARE EXACT. CONFIRMATION OF EXISTENCE AND EXACT LOCATION OF ALL SERVICES MUST BE OBTAINED FROM THE INDIVIDUAL UTILITIES BEFORE PROCEEDING WITH CONSTRUCTION.

NO.	REVISIONS	DATE	BY
-	ISSUED FOR TENDER	05.10.27	LC
-	REVISED AS PER CITY COMMENTS	05.09.30	GS
-	ISSUED FOR APPROVAL	05.08.18	GS

WARDROP Engineering Inc.

DESIGNED BY: GWC
 CHECKED BY: [Signature]
 DRAWN BY: NL
 APPROVED BY: [Signature]
 RELEASED FOR CONSTRUCTION: [Signature]
 HOR. SCALE: 1 : 250
 VERTICAL: 1 : 50
 DATE: 05.07.28



THE CITY OF WINNIPEG
 WATER AND WASTE DEPARTMENT

2005 COMBINED SEWER RENEWALS AND SEWER REPAIRS- CONTRACT NO. 16

CITY DRAWING NUMBER: 05634
 SHEET: 2 OF 11
 C5002

BERESFORD AVENUE FROM 1ST MANHOLE EAST OF LILAC ST. TO 2ND MH EAST OF LILAC ST.

CONSULTANT DRAWING NO. 0500120500-DWG-C5002