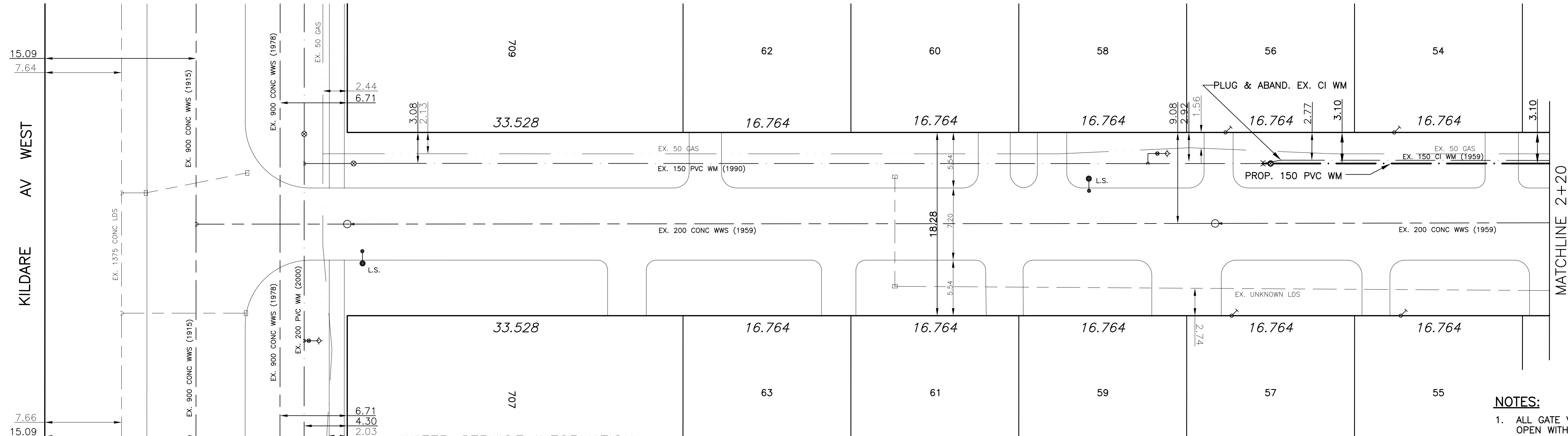
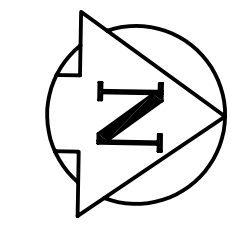


CHAINAGE ALONG WEST PROPERTY LINE OF BURNABY BAY

BURNABY BAY



WATER SERVICE INFORMATION

ADDRESS	SIZE(mm) & TYPE	SIZE(mm) & TYPE	SHORT & LONG CORP MEASUREMENT	LOCATION
57 BURNABY BAY RESIDENTIAL	19 COPPER	19 COPPER	0.6 N/SHL	
56 BURNABY BAY RESIDENTIAL	19 COPPER	19 COPPER	0.9 S/SHL	
55 BURNABY BAY RESIDENTIAL	19 COPPER	19 COPPER	1.8 S/SHL	
54 BURNABY BAY RESIDENTIAL	19 COPPER	19 COPPER	0.6 S/SHL	

- NOTES:**
1. ALL GATE VALVES ARE TO BE COUNTER-CLOCKWISE TO OPEN WITH A BLACK OPERATING NUT.
 2. WATERMAIN TO BE INSTALLED BY TRENCHLESS METHODS.
 3. BACKFILL IS CLASS 5 WITHIN BOULEVARD AND CLASS 3 WHEN WITHIN PAVEMENT/SIDEWALK OR WHEN WITHIN 1.0m OF PAVEMENT OR SIDEWALK.
 4. WATER SERVICES ARE 19mm UNLESS OTHERWISE NOTED.
 5. MINIMUM COVER TO TOP OF WATERMAIN SHALL BE 2.4m.
 6. LOCATION OF ALL SERVICES TO BE CONFIRMED IN FIELD.
 7. EXPOSE EXISTING WATERMAIN TO CONFIRM DEPTH PRIOR TO CONSTRUCTION.
 8. ALL LEAD SERVICES TO BE RENEWED.
 9. SERVICES TO BE RENEWED SHALL BE REPLACED FROM WATERMAIN TO PROPERTY LINE. ALL OTHERS TO BE RECONNECTED.

METRIC
WHOLE NUMBERS INDICATE MILLIMETRES
DECIMALIZED NUMBERS INDICATE METRES



EXISTING	LEGEND - PLAN	PROPOSED	EXISTING	LEGEND - PLAN	PROPOSED	EXISTING	LEGEND - PROFILE	PROPOSED
	WATERMAIN			HYDRANT			CENTER LINE	
	VALVE			M.T.S.			NORTH GUTTER LINE	
	LAND DRAINAGE SEWER			CONCRETE			SOUTH GUTTER LINE	
	WASTE WATER SEWER			ASPHALT			WATERMAIN	
	MANHOLE			PROPERTY LINE			VALVE	
	CATCH BASIN			SURVEY BAR			LAND DRAINAGE SEWER	
	CURB INLET			CURB STOP			WASTE WATER SEWER	
	TRAFFIC SIGNAL			C.B. LEAD			JUNCTIONS	
	STEAM HT.			SIDEWALK			CULVERT	
	GAS			SIDEWALK RAMP			ANODE	
				ELEVATIONS			PLUG	

LOCATION APPROVED

SUPV. U/G STRUCTURES COMMITTEE DATE

NOTE:
LOCATION OF UNDERGROUND STRUCTURES AS SHOWN ARE BASED ON THE BEST INFORMATION AVAILABLE BUT NO GUARANTEE IS GIVEN THAT ALL EXISTING UTILITIES ARE SHOWN OR THAT THE GIVEN LOCATIONS ARE EXACT. CONFIRMATION OF EXISTENCE AND EXACT LOCATION OF ALL SERVICES MUST BE OBTAINED FROM THE INDIVIDUAL UTILITIES BEFORE PROCEEDING WITH CONSTRUCTION.

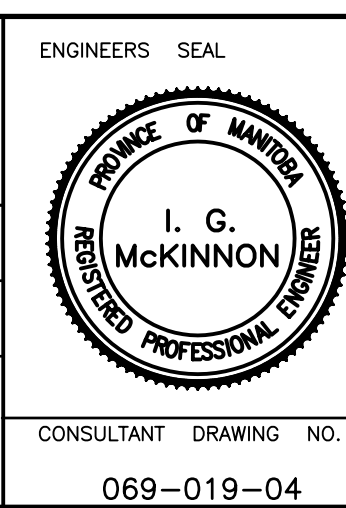
NO.	REVISIONS	DATE	BY
1	REVISED FOR 522-2005	05/08/17	DJ

SEG ENGINEERING INC.
200 TACHE AVENUE WINNIPEG, MANITOBA (204)-233-2113

DESIGNED BY: DJ
CHECKED BY: SM

DRAWN BY: RH
APPROVED BY: IMck

RELEASED FOR ORIGINAL CONSTRUCTION SIGNED BY: K. ZUREK P. ENG
DATE: Aug. 18, 2005



THE CITY OF WINNIPEG
WATER AND WASTE DEPARTMENT

2005 CAPITAL WORKS
WATERMAIN RENEWALS
BURNABY BAY (EAST LEG)

90m NORTH OF KILDARE AVENUE WEST
120M NORTH OF KILDARE AVENUE WEST

CITY DRAWING NO. SHEET 1 OF 2
D-8809