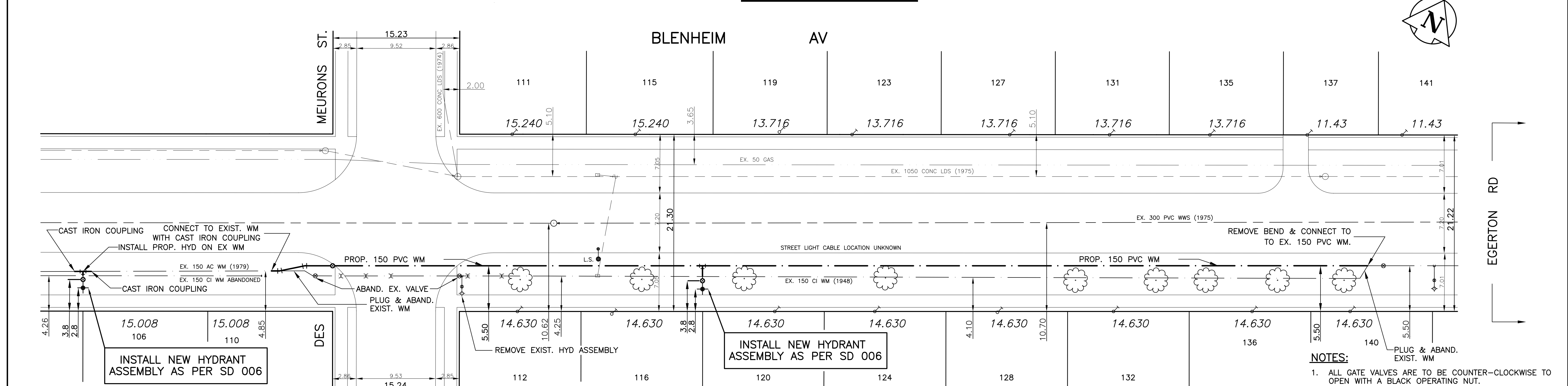


CHAINAGE ALONG SOUTH LINE OF BLENHEIM AV.



WATER SERVICE INFORMATION

ADDRESS	SIZE(mm) & TYPE	SIZE(mm) & TYPE	SHORT & LONG MEASUREMENT	CORP LOCATION
111 BLENHEIM AVE RESIDENTIAL	19 COPPER	19 COPPER	3.4 N/EHL	47.6
112 BLENHEIM AVE RESIDENTIAL	19 COPPER	19 COPPER	3.1 L OF R	65.6
115 BLENHEIM AVE RESIDENTIAL	19 COPPER	19 COPPER	E/E/ DES MEURONS	66.5
116 BLENHEIM AVE RESIDENTIAL	19 COPPER	19 COPPER	1.2 N/EHL	79.3
119 BLENHEIM AVE RESIDENTIAL	19 COPPER	19 COPPER	4.9 R OF L	78.7
120 BLENHEIM AVE RESIDENTIAL	19 COPPER	19 COPPER	E/E/ DES MEURONS	114.1

ADDRESS	SIZE(mm) & TYPE	SIZE(mm) & TYPE	SHORT & LONG MEASUREMENT	CORP LOCATION
123 BLENHEIM AVE RESIDENTIAL	19 COPPER	19 COPPER	E/E/ DES MEURONS	47.6
124 BLENHEIM AVE RESIDENTIAL	19 COPPER	19 COPPER	3.2 L OF R	65.6
127 BLENHEIM AVE RESIDENTIAL	19 COPPER	19 COPPER	E/E/ DES MEURONS	66.5
128 BLENHEIM AVE RESIDENTIAL	19 COPPER	19 COPPER	4.3 R OF L	79.3
131 BLENHEIM AVE RESIDENTIAL	19 COPPER	19 COPPER	1.5 L/R	78.7
132 BLENHEIM AVE RESIDENTIAL	19 COPPER	19 COPPER	E/E/ DES MEURONS	114.1

ADDRESS	SIZE(mm) & TYPE	SIZE(mm) & TYPE	SHORT & LONG MEASUREMENT	CORP LOCATION
135 BLENHEIM AVE RESIDENTIAL	13 COPPER	13 COPPER	1.5 R/L	88.5
136 BLENHEIM AVE RESIDENTIAL	19 COPPER	19 COPPER	4.6 L/R	110.1
137 BLENHEIM AVE RESIDENTIAL	19 COPPER	19 COPPER	E/EHL	110.1
140 BLENHEIM AVE RESIDENTIAL	13 COPPER	13 COPPER	2.1 L/R	122.3
141 BLENHEIM AVE RESIDENTIAL	13 COPPER	13 COPPER	E/E/ DES MEURONS	114.1

- NOTES:**
- ALL GATE VALVES ARE TO BE COUNTER-CLOCKWISE TO OPEN WITH A BLACK OPERATING NUT.
 - WATERMAIN TO BE INSTALLED BY TRENCHLESS METHODS.
 - BACKFILL IS CLASS 5 WITHIN BOULEVARD AND CLASS 3 WHEN WITHIN PAVEMENT/SIDEWALK OR WHEN WITHIN 1.0m OF PAVEMENT OR SIDEWALK.
 - WATER SERVICES ARE 19mm UNLESS OTHERWISE NOTED.
 - MINIMUM COVER TO TOP OF WATERMAIN SHALL BE 2.4m.
 - LOCATION OF ALL SERVICES TO BE CONFIRMED IN FIELD.
 - EXPOSE EXISTING WATERMAIN TO CONFIRM DEPTH PRIOR TO CONSTRUCTION.
 - ALL LEAD SERVICES TO BE RENEWED.
 - SERVICES TO BE RENEWED SHALL BE REPLACED FROM WATERMAIN TO PROPERTY LINE. ALL OTHERS TO BE RECONNECTED.

METRIC
WHOLE NUMBERS INDICATE MILLIMETRES
DECIMALIZED NUMBERS INDICATE METRES

APEGM
Certificate of Authorization
SEG Engineering Inc.
No. 1432 Expiry: April 30, 2006

EXISTING	LEGEND - PLAN	NEW	EXISTING	LEGEND - PLAN	NEW	EXISTING	LEGEND - PROFILE	NEW
○	WATERMAIN	—	—	HYDRO	—	—	—	—
○	HYDRANT	+	+	M.T.S.	—	—	—	—
○	VALVE	+	+	CONCRETE	—	—	—	—
—	LAND DRAINAGE SEWER	—	—	ASPHALT	—	—	—	—
—	WASTE WATER SEWER	—	—	PROPERTY LINE	—	—	—	—
○	MANHOLE	+	+	SURVEY BAR	—	—	—	—
○	CATCH BASIN	+	+	CURB STOP	—	—	—	—
△	CURB INLET	+	+	C.B. LEAD	—	—	—	—
—	TRAFFIC SIGNAL	—	—	SIDEWALK	—	—	—	—
—	STEAM HT.	—	—	SIDEWALK RAMP	—	—	—	—
—	GAS	—	—	ELEVATIONS	—	—	—	—

LOCATION APPROVED UNDERGROUND STRUCTURES ORIGINALLY SIGNED BY XXXXXXXXXX

DATE: 05/08/17

NOTE: LOCATION OF UNDERGROUND STRUCTURES AS SHOWN ARE BASED ON THE BEST INFORMATION AVAILABLE BUT NO GUARANTEE IS GIVEN THAT ALL EXISTING UTILITIES ARE SHOWN OR THAT THE GIVEN LOCATIONS ARE EXACT. CONFIRMATION OF EXISTENCE AND EXACT LOCATION OF ALL SERVICES MUST BE OBTAINED FROM THE INDIVIDUAL UTILITIES BEFORE PROCEEDING WITH CONSTRUCTION.

NO.	REVISIONS	DATE	BY
1	REVISED FOR 522-2005	05/08/17	DJ

SEG ENGINEERING INC.
200 TACHE AVENUE WINNIPEG, MANITOBA (204)-233-2113

DESIGNED BY: DJ
CHECKED BY: SM
DRAWN BY: RH
APPROVED BY: IMck

HR. SCALE: 1:250
VERT. SCALE: 1:50

RELEASED FOR ORIGINALLY CONSTRUCTION SIGNED BY K. ZUREK P. ENG
DATE: Aug. 18, 2005



ENGINEERS SEAL

THE CITY OF WINNIPEG
WATER AND WASTE DEPARTMENT

2005 CAPITAL WORKS
WATERMAIN RENEWALS
BLENHEIM AVENUE
DES MEURONS STREET TO
110m EAST OF DES MEURONS STREET

CITY DRAWING NO.
SHEET 1 OF 1
D-8808

CONSULTANT DRAWING NO. 069-019-03