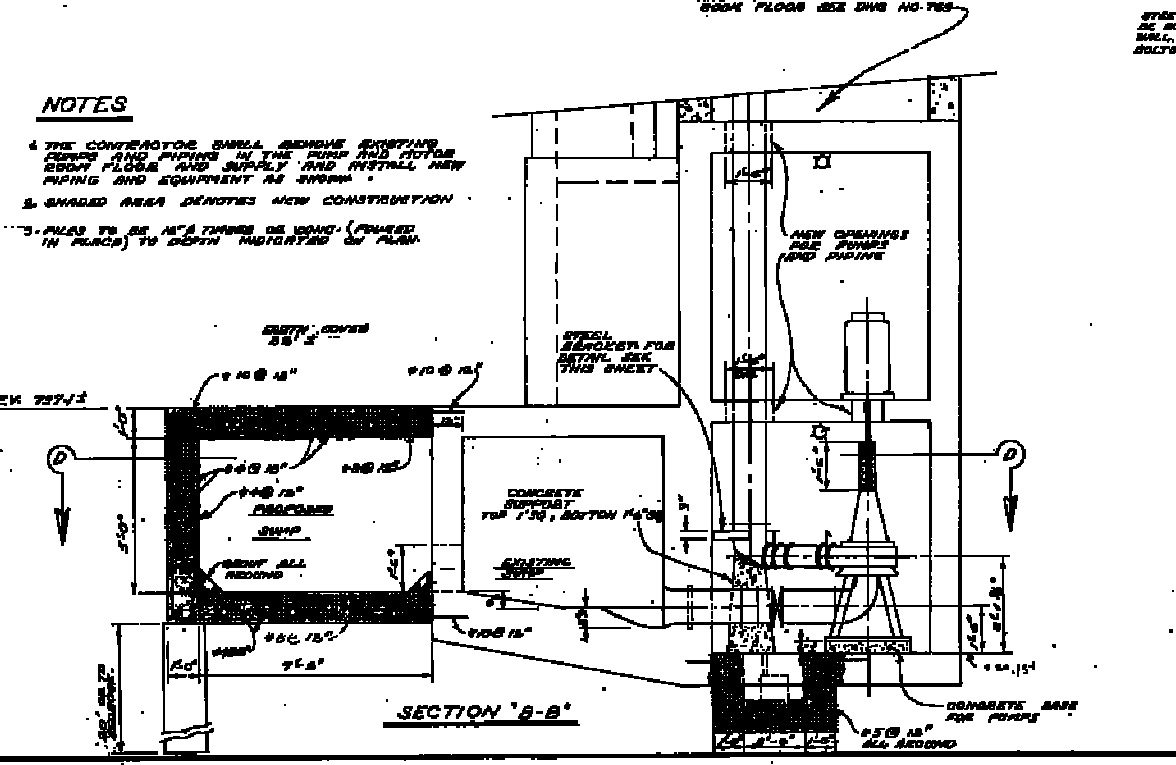
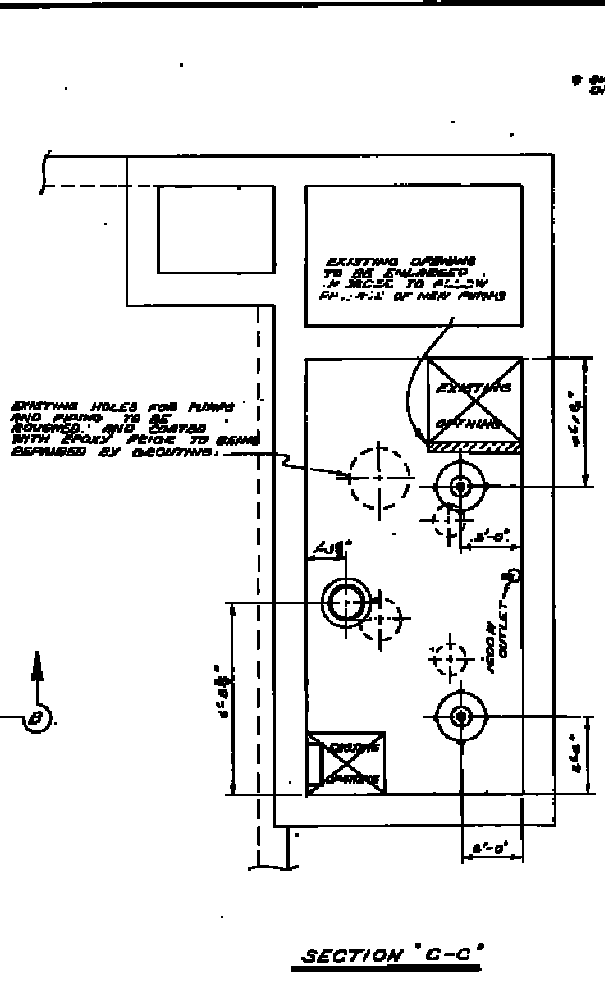
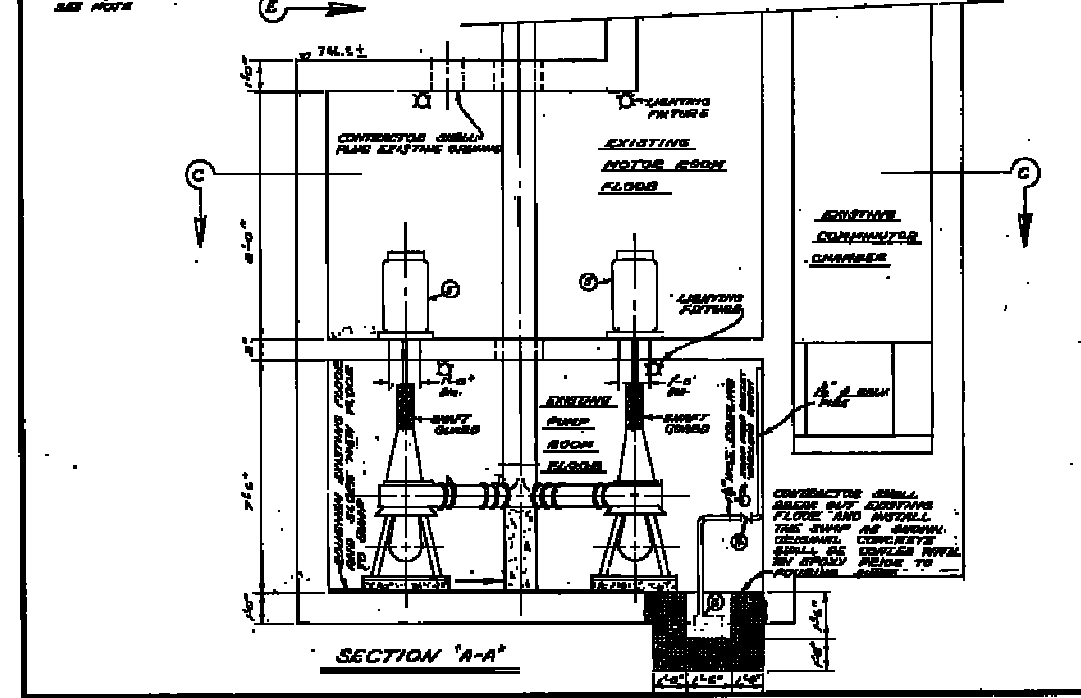
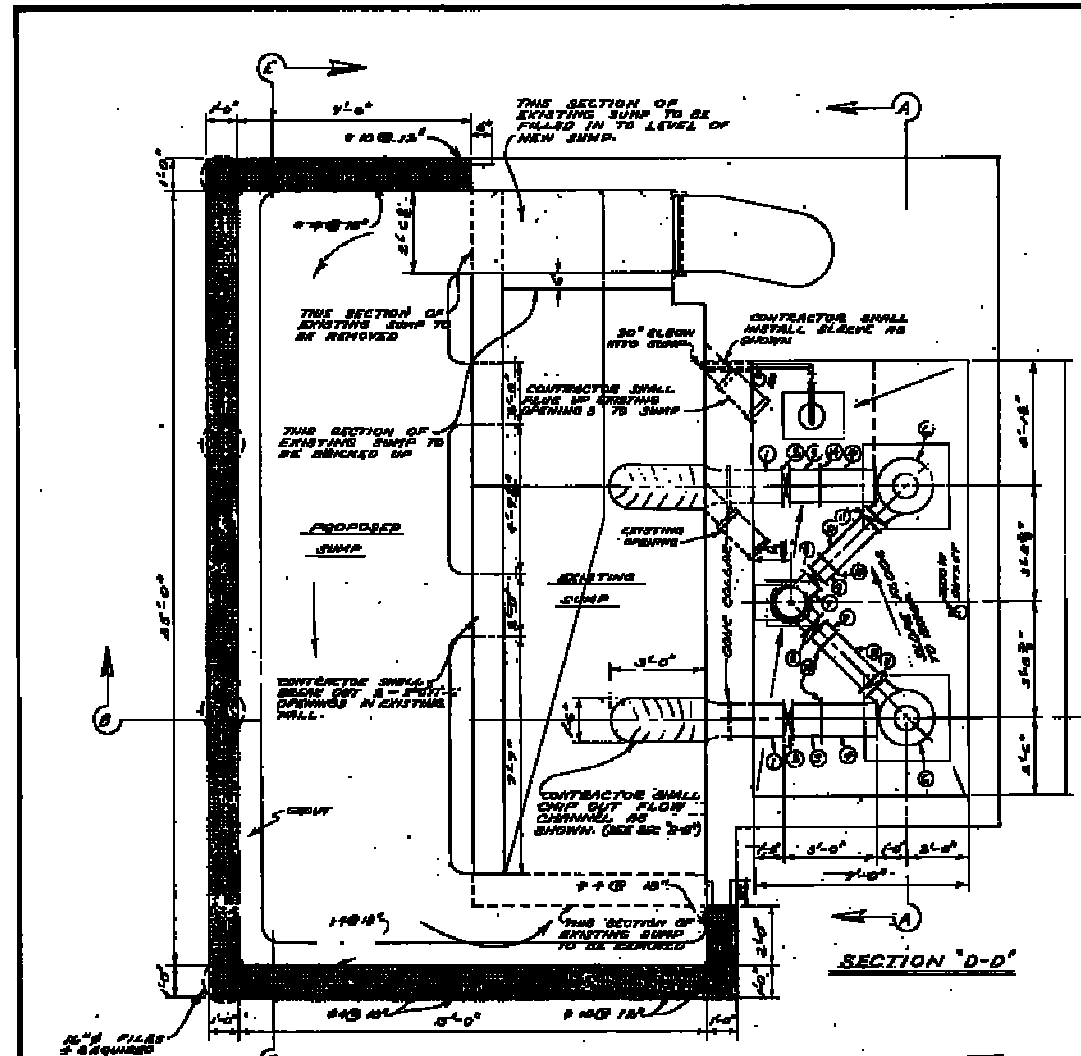


Ref. or Drawing No. **768**  
 DETAILS  
 #10161  
 RSP



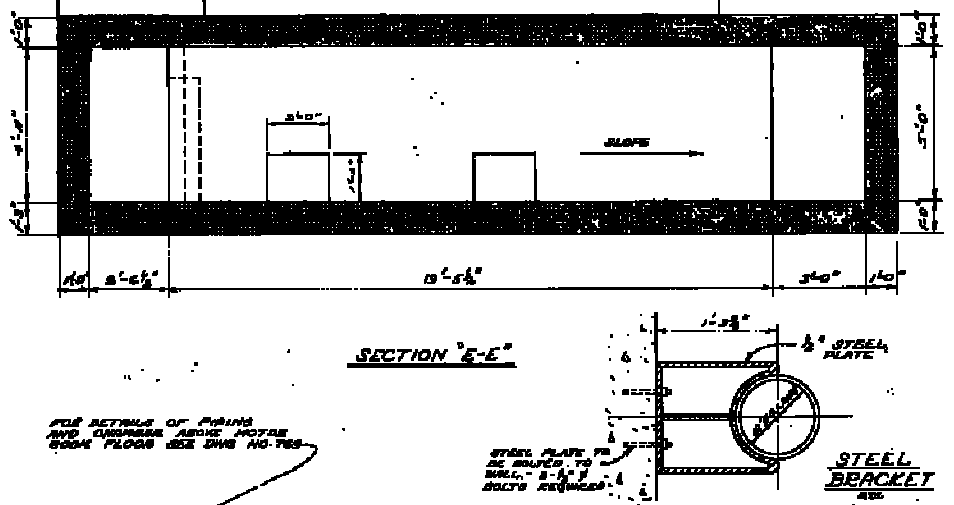
**NOTES**

- THE CONTRACTOR SHALL REMOVE EXISTING CEILING AND PIPING IN THE SUMP AND TOP OF ROOM FLOOR AND SUPPLY AND INSTALL NEW PIPING AND EQUIPMENT AS SHOWN.
- SHADE AREA DENOTES NEW CONSTRUCTION.
- PILES TO BE 12" SQUARE OR ROUND (POWER IN PLACE) TO DEPTH INDICATED BY PLAN.

AS SUPPLIED BY THE CITY OF WINNIPEG

NEW MATERIAL			
NO.	DESCRIPTION	LENGTH	AMT.
1	12" O.D. SHORT WITH CORR. RING (FLANGE TO F.L.G.)	2'-6"	2
2	12" O.D. PIPE GATE VALVE (FLG - DESIGN OR APPRO. EQUAL)	0'-3"	2
3	12" O.D. SHORT (FLG. TO HWY)	1'-0"	2
4	12" O.D. SHORT (HWY TO FLG.)	1'-0"	2
5	25 HP ELECTRIC MOTOR		2
6	MONARCH PUMP - G.H. SERIES - 1248		2
7	6" X 6" X 12" END OUTLET GLOBE (FLANGES ENDS)	12" X 12" X 12"	1
8	2" O.D. PIPE GATE VALVE (FLG. - DESIGN OR APPRO. EQUAL)	0'-3"	2
9	2" O.D. SHORT (FLG. TO HWY)	0'-3"	2
10	2" O.D. SHORT (HWY TO FLG.)	1'-0"	2
11	2" O.D. BRASS CHECK VALVE (FLG. - DESIGN OR APPRO. EQUAL)	0'-3"	2
12	1 1/2" CHECK VALVE		1
13	50HP PUMP - MONARCH MODEL 44 DE EQUAL	12" X 12" X 12"	1
14	STEEL 44 METALLIC COMPLING	12" X 6" X 3"	2 PAIRS

**FOR INFORMATION ONLY**



NO.	DESCRIPTION	DATE	BY
REVISIONS			
<b>The City of Winnipeg</b>			
DEPARTMENT SERVICE DISPOSAL			
ALTERATIONS TO MAGER PUMP STATION PUMP ROOM, MOTOR ROOM AND SUMP			
	DESIGNED BY <i>Mackey</i>	DRAWN BY M. DUNN	
	CHECKED BY M. DUNN	DATE 1/1/70	
APPROVED BY		DRAWING NO. <b>768</b>	

#10161 MICROFILMED NOV. 6