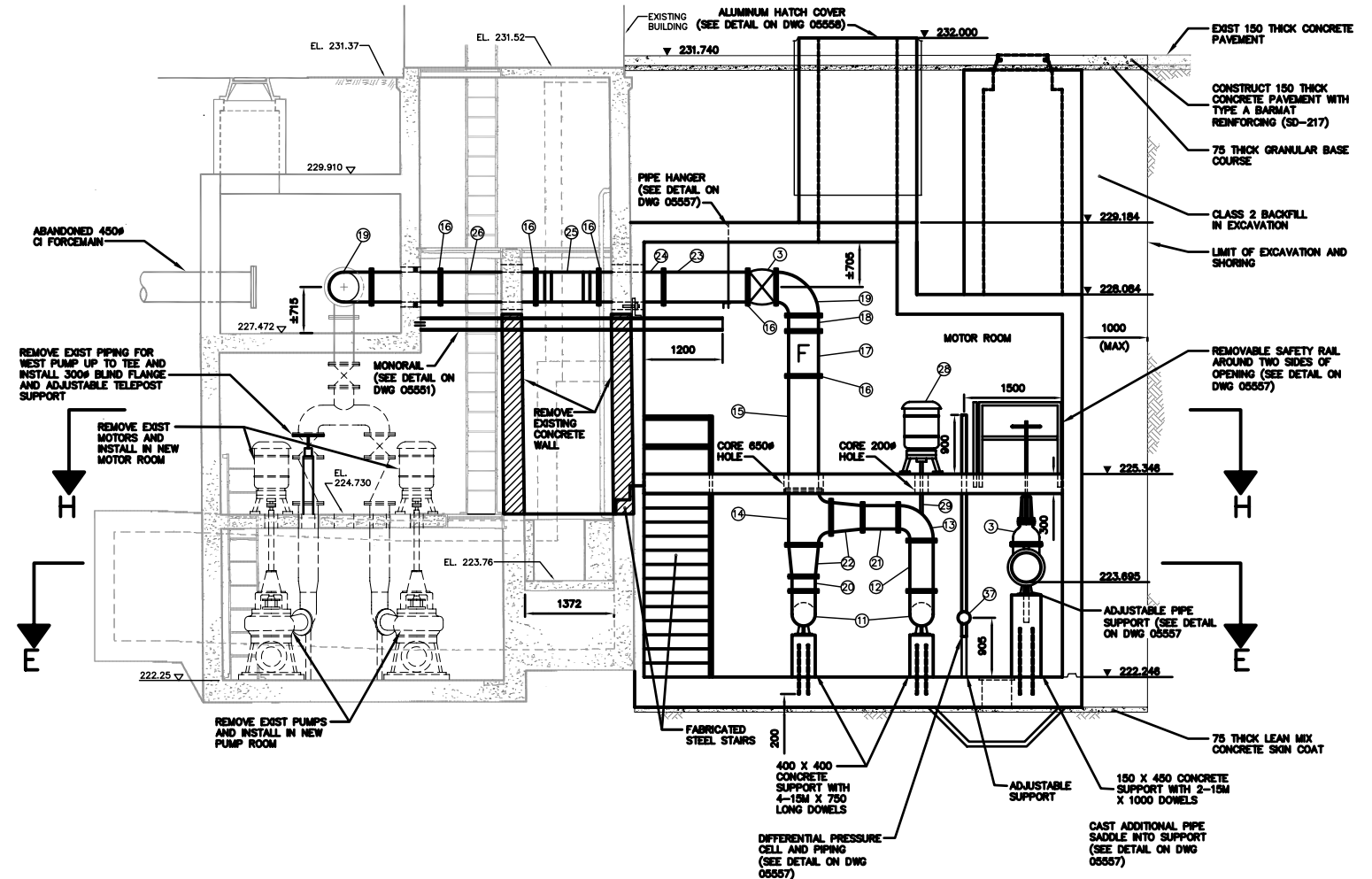


PLAN VIEW ELEV. 228.75

SCALE: 1:50

ITEM	DESCRIPTION	ENDS	LENGTH	QUANTITY
1	RUBBER MODULAR SEAL FOR 450# DI PIPE "MODEL OS - 316 LINK SEAL" OR APPROVED EQUAL	-	-	2
2	450# CLASS 52 DUCTILE IRON INLET PIPE	FL X PE	600	2
3	450# CAST IRON WEDGE GATE VALVE WITH BRONZE TRIM O. S & Y RISING STEM AND HAND WHEEL	FL X FL	432	3
4	450# REMOVABLE FLANGE - "SERIES 400S UNI-FLANGE" OR APPROVED EQUAL	-	-	2
5	450# X 300# FABRICATED SCH 80 STEEL REDUCER	FL(300) X PE(450)	530	2
6	** INGERSOLL - DRESSER PUMP MODEL 10FV-16	FL X FL	940	2
7	350# X 250# FABRICATED SCH 80 STEEL REDUCER	FL(250) X PE(350)	480	2
8	350# REMOVABLE FLANGE - "SERIES 400-S UNI-FLANGE" OR APPROVED EQUAL	-	-	2
9	350# CAST IRON CHECK VALVE WITH RUBBER FLAP "VAL-MATIC" OR APPROVED EQUAL	FL X FL	790	2
10	300# CAST IRON WEDGE GATE VALVE WITH BRONZE TRIM O. S & Y RISING STEM AND HAND WHEEL	FL X FL	380	3
11	350# 90° CAST IRON BASE ELBOW	FL X FL	305	2
12	350# CLASS 52 DI FILLER PIPE	FL X FL	789 ±	1
13	350# 90° CI ELBOW	FL X FL	356 (E TO FL)	1
14	450X450X450 CI TEE	FL X FL	420 (E TO FL)	1
15	450# CLASS 52 DI FILLER PIPE	FL X PE	1735 ±	1
16	450# REMOVABLE FLANGE - "SERIES 400C UNI-FLANGE" OR APPROVED EQUAL	-	-	6
17	** ROSEMOUNT FLOW METER	FL X FL	685	1
18	450# CLASS 52 DI FILLER PIPE	FL X FL	238 ±	1
19	450# 90° CI ELBOW	FL X FL	420 (E TO FL)	2
20	350# CLASS 52 DI FILLER PIPE	FL X FL	220 ±	1
21	350# CLASS 52 DI FILLER PIPE	FL X FL	543 ±	1
22	450# X 350# CI CONCENTRIC REDUCER	FL X FL	482	2
23	450# CLASS 52 DI FILLER PIPE	FL X PE	1248 ±	1
24	450# CLASS 52 DI FILLER PIPE	FL X PE	1050 ±	1
25	450# SCH 40 STEEL FABRICATED BEND	FL X FL	970 *	1
26	450# CLASS 52 DI FILLER PIPE	FL X PE	1425 ±	1
27	450# CLASS 52 DI FILLER PIPE	FL X PE	1033 ±	1
28	** MARATHON ELECTRIC TYPE VSS 75 HP, 3 PH, 60 HZ 575 VOLT MOTOR	-	-	2
29	HOLLOW STEEL DRIVE SHAFT WITH EXPANDED METAL GUARD	-	REQ'D ±	2
30	450# CLASS 52 DI FILLER PIPE	FL X FL	450	1
31	450# CLASS 52 DI FILLER PIPE	PE X PE	4670 ±	1
32	400# CAST IRON WEDGE GATE VALVE WITH BRONZE TRIM, O. S & Y RISING STEM AND HAND WHEEL	FL X FL	381	1
33	400# REMOVABLE FLANGE - "SERIES 400C UNI-FLANGE" OR APPROVED EQUAL	-	-	1
34	400# CLASS 52 DI FILLER PIPE	FL X PE	870 ±	1
35	400# 22.5° CI ELBOW	FL X FL	203 (E TO FL)	1
36	400# CLASS 52 DI FILLER PIPE	FL X PE	850 ±	1
37	** DIFFERENTIAL PRESSURE CELL	FL	-	1
38	450# ANBMA 905 CL150 PVC FILLER PIPE	PE X PE	2500±	1
39	450# CLASS 52 DI FILLER PIPE	PE X FL	450	1
40	450# CI FLEXIBLE ADAPTER COUPLING	-	-	1

ITEMS MARKED * WILL BE PROVIDED BY CITY
ITEMS MARKED ** TO BE RE-USED FROM EXISTING PUMPING STATION



SECTION A-A

SCALE: 1:50

CONSTRUCTION NOTES:

- FOR BUILDING DIMENSIONS SEE DRAWING NO'S 05550, 05551, 05552 & 05553.
- SEE DRAWING NO'S 208, 209A, 788, & 789 FOR EXISTING STATION DIMENSIONS AND DETAILS.
- SEE DRAWING NO. 4172 FOR EXISTING PUMPING STATION PIPING DETAILS.
- ALL NUTS, BOLTS ANCHORS TO BE ASTM A276 TYPE 316 EXCEPT FLANGE NUTS AND BOLTS.
- FLANGE NUTS AND BOLTS TO BE ASTM A307.
- DIMENSIONS SHOWN AS ± TO BE CONFIRMED BY CONTRACTOR.
- PIPE AND FITTING LENGTHS SHOWN ARE FACE TO FACE AND DO NOT INCLUDE GASKET THICKNESS.
- GASKETS TO BE 3 mm THICK, FULL FACED, RED RUBBER.
- GROUT ANNULAR SPACE AROUND PIPE AT EXTERIOR WALL FACE IN CORE HOLES WITH 'LINK SEAL' OR APPROVED EQUAL.

METRIC
WHOLE NUMBERS INDICATE MILLIMETRES
DECIMALIZED NUMBERS INDICATE METRES

WARNING

IF POWER EQUIPMENT OR EXPLOSIVES ARE TO BE USED FOR EXCAVATION ON THIS PROJECT THE CONTRACTOR LOCATION OF EXCAVATION:
1) NOTIFY THE GAS COMPANY OF THE PROPOSED LOCATION OF EXCAVATION.
2) TAKE PRECAUTION TO AVOID DAMAGE TO GAS COMPANY INSTALLATIONS.
SEE PROVINCIAL REGULATION 210/72 FOR DETAILS

B.M. ELEV.	FIELD BOOK #	CITY OF WINNIPEG WATER AND WASTE ENGINEERING DIVISION		ENGINEER'S SEAL	THE CITY OF WINNIPEG WATER AND WASTE DEPARTMENT 2005 MAGER DRIVE WASTEWATER PUMPING STATION EXPANSION MECHANICAL PIPING PLAN AND SECTION VIEWS	SHEET 6 OF 12 CITY DRAWING NUMBER 05554
POSTED TO LBS		DESIGNED BY TW	CHECKED BY TW	ORIGINAL SIGNED BY K.R. ZUREK 05/02/10		
		DRAWN BY WKT/CJH	APPROVED BY KZ			
		HOR. SCALE 1:50	RELEASED FOR CONSTRUCTION			
		DATE 2005 02 15	DATE		BID OPPORTUNITY: 52-2005 FILENAME: MAGER_PS_DWG1_DWG2.dwg PLOT DATE: 2005 02 15	