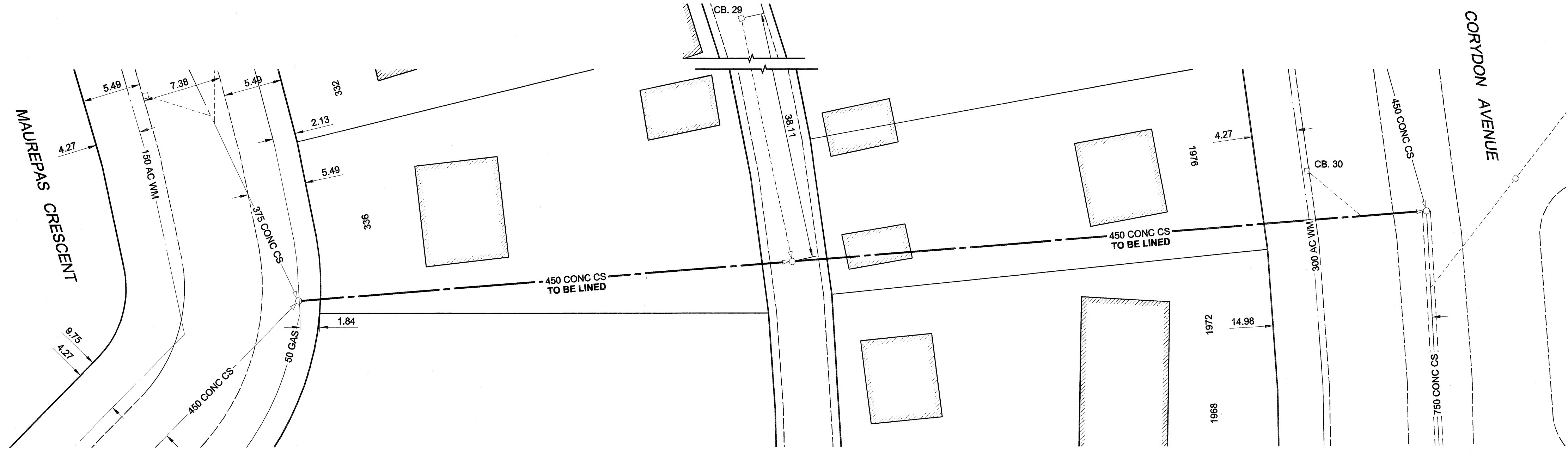
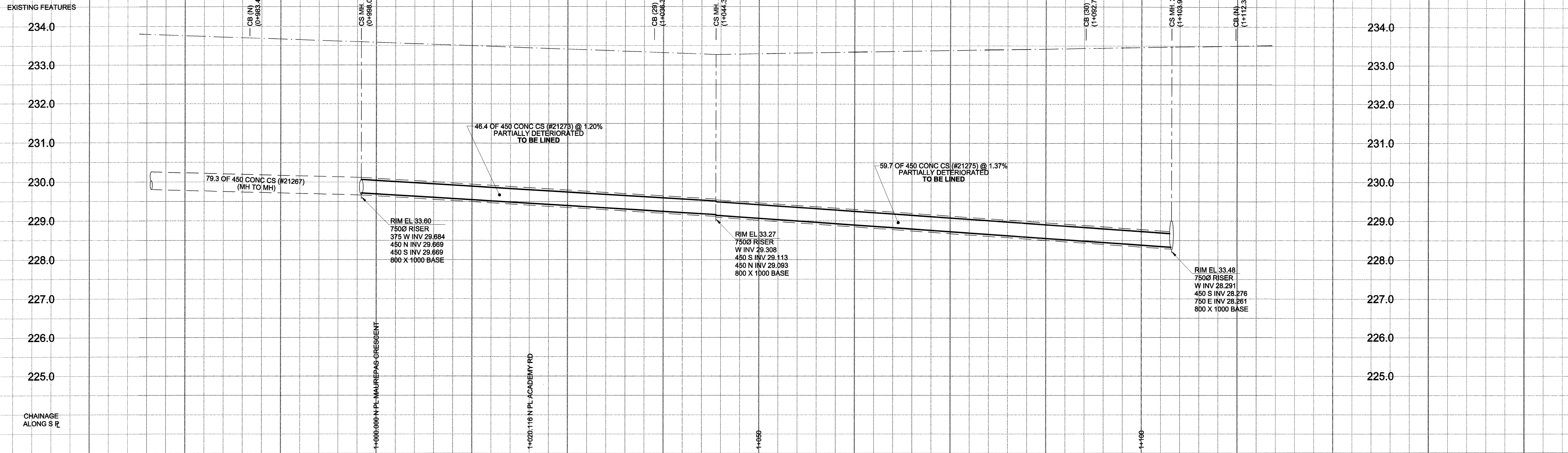


D SIZE 22" x 34" (559mm x 864mm)

PLOT: 05/08/22 4:31:19 PM

UMA FILE NAME: D265-195-01_00-C-0014_RX.dwg Saved By: klerard



SEWER JUNCTION INFORMATION*

REF. MH	DIST FROM	SIZE	CLOCK AT
	REF. MH		
21268	32.70	150Ø	02
21274	53.60	200Ø	10

*JUNCTION LOCATION FROM VIDEO INSPECTION

WARNING
 IF POWER EQUIPMENT OR EXPLOSIVES ARE TO BE USED FOR EXCAVATION ON THIS PROJECT, THE CONTRACTOR MUST:
 1) NOTIFY THE GAS COMPANY OF THE PROPOSED LOCATION OF EXCAVATION.
 2) TAKE PRECAUTION TO AVOID DAMAGE TO GAS COMPANY INSTALLATIONS.
 SEE PROVINCIAL REGULATION 140/92 FOR DETAILS

METRIC
 WHOLE NUMBERS INDICATE MILLIMETRES
 DECIMALIZED NUMBERS INDICATE METRES

APEGM
 Certificate of Authorization
 UMA Engineering Ltd.
 No. 256 Expiry: April 30, 2006

BID OPPORTUNITY NO. 498-2005

150 mm WM		150 mm WWS		CURB STOP		150 mm WM		150 mm WWS		LOCATION APPROVED UNDERGROUND STRUCTURES	
○	HYDRANT	○	LAND DRAINAGE SEWER	⊕	REDUCER	⊕	WATERMAIN	⊕	LAND DRAINAGE SEWER	⊕	DATE
○	VALVE	○	WASTE WATER SEWER	⊕	COUPLING	⊕	HYDRANT	⊕	WASTE WATER SEWER	⊕	COMMITTEE
○	MANHOLE	○	CATCH BASIN	⊕	ANODE	⊕	VALVE	⊕	PAVEMENT CROWN	⊕	NOTE:
○	CURB INLET	○	CULVERT	⊕	HYDRO	⊕	⊕	⊕	N/W PROPERTY LINE	⊕	LOCATION OF UNDERGROUND STRUCTURES AS SHOWN ARE BASED ON THE BEST INFORMATION AVAILABLE. BUT NO GUARANTEE IS GIVEN THAT ALL EXISTING UTILITIES ARE SHOWN OR THAT THE GIVEN LOCATIONS ARE EXACT. CONFIRMATION OF EXISTENCE AND EXACT LOCATION OF ALL SERVICES MUST BE OBTAINED FROM THE INDIVIDUAL UTILITIES BEFORE PROCEEDING WITH CONSTRUCTION.
⊕	PIPE ABANDONMENTS	⊕	SURVEY BAR	⊕	MTS	⊕	⊕	⊕	S/E PROPERTY LINE	⊕	
⊕	LEGEND - PLAN	⊕	NEW	⊕	TESTHOLE	⊕	⊕	⊕	N/W GUTTER	⊕	
⊕	LEGEND - PLAN	⊕	EXISTING	⊕	LAMP STANDARD	⊕	⊕	⊕	S/E GUTTER	⊕	
⊕	LEGEND - PLAN	⊕	NEW	⊕	TREE	⊕	⊕	⊕		⊕	
⊕	LEGEND - PLAN	⊕	EXISTING	⊕	LEGEND - PROFILE	⊕	⊕	⊕		⊕	
⊕	LEGEND - PLAN	⊕	NEW	⊕	LEGEND - PROFILE	⊕	⊕	⊕		⊕	

NO.	ISSUED FOR CONSTRUCTION	DATE	BY
0	ISSUED FOR CONSTRUCTION	05/08/22	KMB
	REVISIONS	YYMMDD	BY

DESIGNED BY	ALD / MJR	CHECKED BY	DATE
ALD / MJR			
DRAWN BY	KMB	APPROVED BY	
HOR. SCALE	1:250	RELEASED FOR CONSTRUCTION	
VERT. SCALE	1:50		
		DATE	05/22/05

PROFESSIONAL'S SEAL
 PROVINCE OF MANITOBA
 22 Aug 05
 C.C. MACEY
 REGISTERED ENGINEER
 CONSULTANT DRAWING NO. 12
 D265-195-01

UMA AECOM
 © 2005 UMA ENGINEERING LTD. ALL RIGHTS RESERVED.

THE CITY OF WINNIPEG WATER AND WASTE DEPARTMENT
2005 COMBINED SEWER RENEWALS BY CIPP LINING
 BETWEEN MAUREPAS CRESCENT AND CORYDON AVENUE
 MH AT MAUREPAS CRESCENT TO MH AT CORYDON AVENUE

SHEET 12 OF 15
 CITY DRAWING NUMBER 05627
 REV 0