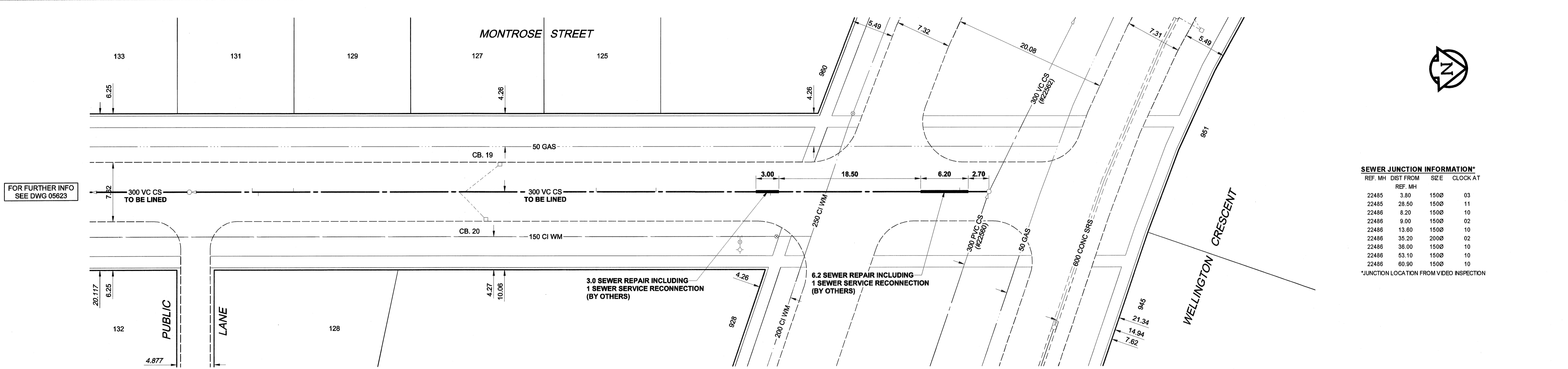
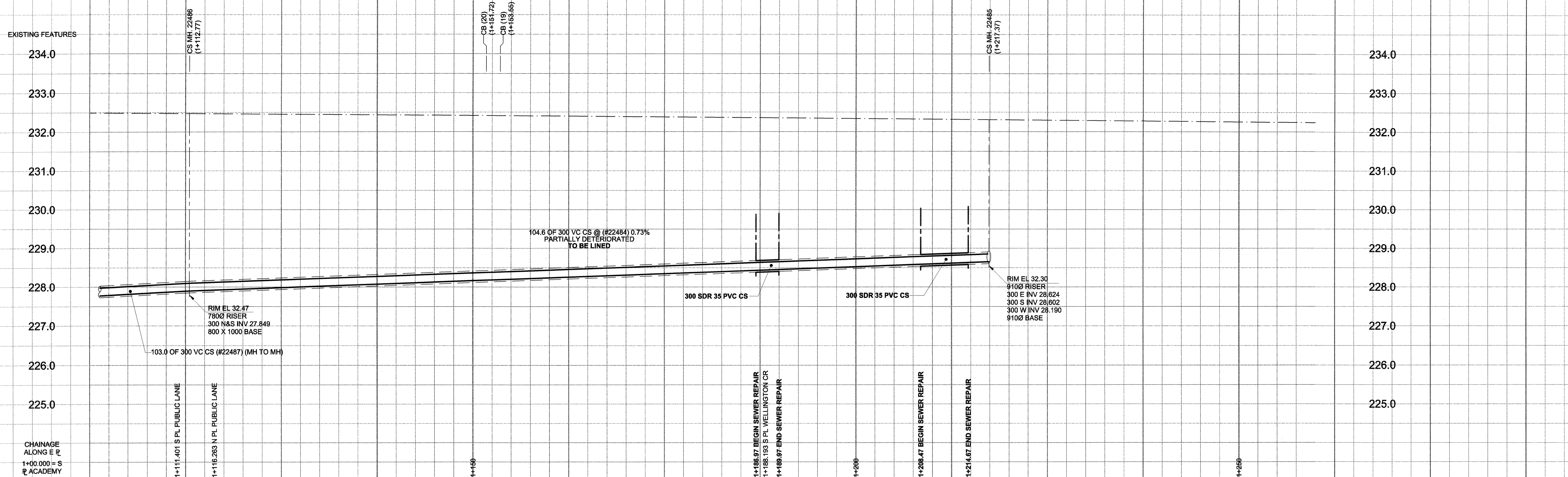


D SIZE 22" x 34" (594mm x 864mm)

PLOT: 05/09/22 4:29:34 PM

UMA FILE NAME: D265-195-01_00-C-009_RX.dwg Saved By: lberard



SEWER JUNCTION INFORMATION*

REF. MH	DIST FROM	SIZE	CLOCK AT
22485	3.80	150Ø	03
22485	28.50	150Ø	11
22486	8.20	150Ø	10
22486	9.00	150Ø	02
22486	13.60	150Ø	10
22486	35.20	200Ø	02
22486	36.00	150Ø	10
22486	53.10	150Ø	10
22486	60.90	150Ø	10

*JUNCTION LOCATION FROM VIDEO INSPECTION

WARNING
 IF POWER EQUIPMENT OR EXPLOSIVES ARE TO BE USED FOR EXCAVATION ON THIS PROJECT, THE CONTRACTOR MUST:
 1) NOTIFY THE GAS COMPANY OF THE PROPOSED LOCATION OF EXCAVATION.
 2) TAKE PRECAUTION TO AVOID DAMAGE TO GAS COMPANY INSTALLATIONS.
 SEE PROVINCIAL REGULATION 140/92 FOR DETAILS

150 mm WM	WATERMAIN	150 mm WM	CURB STOP	150 mm WM	WATERMAIN	150 mm WM
	HYDRANT		REDUCER		HYDRANT	
	VALVE		COUPLING		VALVE	
	LAND DRAINAGE SEWER		ANODE		WASTE WATER SEWER	
	WASTE WATER SEWER		MTS		PAVEMENT CROWN	
	MANHOLE		GAS		N/W PROPERTY LINE	
	CATCH BASIN		TESTHOLE		N/W GUTTER	
	CURB INLET		LAMP STANDARD		S/E GUTTER	
	CULVERT		TREE			
	PIPE ABANDONMENTS					
	SURVEY BAR					
	EXISTING		LEGEND - PLAN		EXISTING	
	NEW		LEGEND - PROFILE		EXISTING	

LOCATION APPROVED
 UNDERGROUND STRUCTURES

DATE COMMITTEE

NOTE:
 LOCATION OF UNDERGROUND STRUCTURES AS SHOWN ARE BASED ON THE BEST INFORMATION AVAILABLE. BUT NO GUARANTEE IS GIVEN THAT ALL EXISTING UTILITIES ARE SHOWN OR THAT THE GIVEN LOCATIONS ARE EXACT. CONFIRMATION OF EXISTENCE AND EXACT LOCATION OF ALL SERVICES MUST BE OBTAINED FROM THE INDIVIDUAL UTILITIES BEFORE PROCEEDING WITH CONSTRUCTION.

METRIC
 WHOLE NUMBERS INDICATE MILLIMETRES
 DECIMALIZED NUMBERS INDICATE METRES

BM 51-051	S.W. Cor. Wellington Cres. & Waverley St.
	Grass plus in 13.4 m Conc. pile
ELEV 232.467m	2.1 m N. of S.L. Wellington Cres. & 0.2 m W. of W.L. Waverley St.

DESIGNED BY	ALD / MJR	CHECKED BY	
DRAWN BY	KMB	APPROVED BY	
HOR. SCALE	1:250	RELEASED FOR CONSTRUCTION	
VERT. SCALE	1:50	DATE	22/05/2005

UMA | AECOM
 Certificate of Authorization
 UMA Engineering Ltd.
 No. 256 Expiry: April 30, 2006

PROFESSIONAL'S SEAL

 CONSULTANT DRAWING NO. 09
 D265-195-01

THE CITY OF WINNIPEG
 WATER AND WASTE DEPARTMENT

2005 COMBINED SEWER RENEWALS BY CIPP LINING

MONTROSE STREET
 MH AT WELLINGTON CRESCENT
 TO 1ST MH S OF WELLINGTON CRESCENT

SHEET 9 OF 15
 CITY DRAWING NUMBER 05624
 REV 0

BID OPPORTUNITY NO. 498-2005