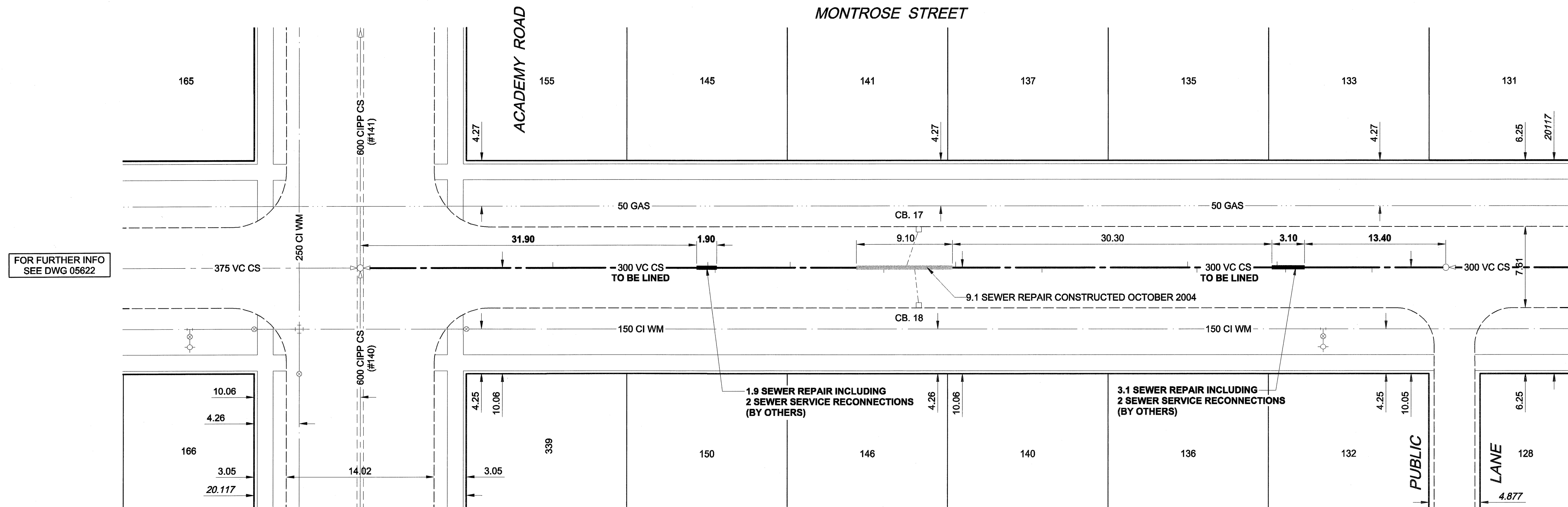
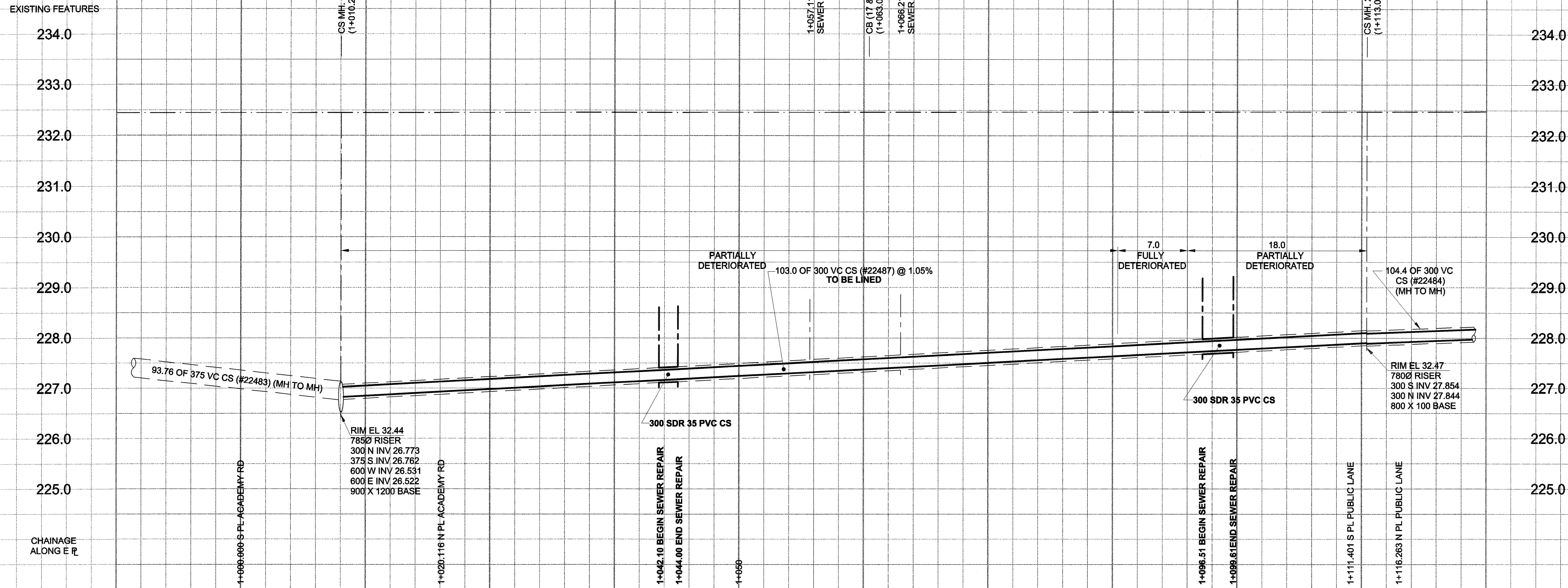


D SIZE 22" x 34" 159mm x 864mm

PLOT: 05/08/22 4:29:09 PM

UMA FILE NAME: D265-195-01_00-C-008_RX.dwg Saved By: kberard



SEWER JUNCTION INFORMATION*

REF. MH	DIST FROM	SIZE	CLOCK AT
22486	7.00	150Ø	11
22486	15.20	150Ø	10
22486	16.00	150Ø	02
22486	23.60	150Ø	10
22486	24.50	150Ø	02
22486	38.30	150Ø	10
22486	46.50	150Ø	01
22486	50.40	200Ø	11
22486	51.20	200Ø	02
22486	53.30	150Ø	11
22486	62.20	150Ø	02
22486	69.30	150Ø	10
22486	70.00	150Ø	02
22486	84.70	150Ø	02

*JUNCTION LOCATION FROM VIDEO INSPECTION

WARNING
 IF POWER EQUIPMENT OR EXPLOSIVES ARE TO BE USED FOR EXCAVATION ON THIS PROJECT, THE CONTRACTOR MUST:
 1) NOTIFY THE GAS COMPANY OF THE PROPOSED LOCATION OF EXCAVATION.
 2) TAKE PRECAUTION TO AVOID DAMAGE TO GAS COMPANY INSTALLATIONS.
 SEE PROVINCIAL REGULATION 140/92 FOR DETAILS

150 mm WM		150 mm WM		CURB STOP		150 mm WM		150 mm WM	
○	HYDRANT	●	REDUCER	⊕	HYDRANT	+	HYDRANT	+	HYDRANT
○	VALVE	○	COUPLING	⊕	VALVE	+	VALVE	+	VALVE
○	LAND DRAINAGE SEWER	○	ANODE	⊕	HYDRO	+	LAND DRAINAGE SEWER	+	LAND DRAINAGE SEWER
○	WASTE WATER SEWER	○	MTS	⊕	TESTHOLE	+	WASTE WATER SEWER	+	WASTE WATER SEWER
○	MANHOLE	○	GAS	⊕	LAMP STANDARD	+	PAVEMENT CROWN	+	PAVEMENT CROWN
○	CATCH BASIN	○	TESTHOLE	⊕	TREE	+	N/W PROPERTY LINE	+	N/W PROPERTY LINE
○	CURB INLET	○	PIPE ABANDONMENTS	⊕	LEGEND - PLAN	+	S/E PROPERTY LINE	+	S/E PROPERTY LINE
○	CULVERT	○	SURVEY BAR	⊕	LEGEND - PROFILE	+	N/W GUTTER	+	N/W GUTTER
○	PIPE ABANDONMENTS	○	LEGEND - PLAN	⊕	NEW	+	S/E GUTTER	+	S/E GUTTER
○	SURVEY BAR	○	NEW	⊕	EXISTING	+	LEGEND - PROFILE	+	NEW
○	LEGEND - PLAN	○	EXISTING	⊕	LEGEND - PLAN	+	NEW	+	NEW

LOCATION APPROVED
 UNDERGROUND STRUCTURES
 SUPR. U/G STRUCTURES COMMITTEE DATE
 NOTE:
 LOCATION OF UNDERGROUND STRUCTURES AS SHOWN ARE BASED ON THE BEST INFORMATION AVAILABLE. BUT NO GUARANTEE IS GIVEN THAT ALL EXISTING UTILITIES ARE SHOWN OR THAT THE GIVEN LOCATIONS ARE EXACT. CONFIRMATION OF EXISTENCE AND EXACT LOCATION OF ALL SERVICES MUST BE OBTAINED FROM THE INDIVIDUAL UTILITIES BEFORE PROCEEDING WITH CONSTRUCTION.

METRIC
 WHOLE NUMBERS INDICATE MILLIMETRES
 DECIMALIZED NUMBERS INDICATE METRES

BM 51-040
 19 mm dia. x 6.2 m l.b. in Valve Box,
 ELEV 232.591m
 2.1 m E. of W.L. Elm St. & 0.2 m N. of N.L. Academy Rd.

NO.	ISSUED FOR CONSTRUCTION	05/08/22	KMB
NO.	REVISIONS	YYMMDD	BY

UMA | AECOM

© 2005 UMA ENGINEERING LTD. ALL RIGHTS RESERVED.

DESIGNED BY	ALD / MJR	CHECKED BY	[Signature]
DRAWN BY	KMB	APPROVED BY	[Signature]
HOR. SCALE	1:250	RELEASED FOR CONSTRUCTION	[Signature]
VERT. SCALE	1:50	DATE	Aug 20/10 5/28

APECM
 Certificate of Authorization
 UMA Engineering Ltd.
 No. 256 Expiry: April 30, 2006

PROFESSIONAL'S SEAL
 PROVINCE OF MANITOBA
 22 Aug 08
 C. C. MACEY
 REGISTERED ENGINEER
 CONSULTANT DRAWING NO. 08
 D265-195-01

THE CITY OF WINNIPEG
WATER AND WASTE DEPARTMENT

2005 COMBINED SEWER RENEWALS BY CIPP LINING

MONTROSE STREET
 1ST MH N OF ACADEMY ROAD TO MH AT ACADEMY ROAD

SHEET 8 OF 15
 CITY DRAWING NUMBER 05623 REV 0

BID OPPORTUNITY NO. 498-2005