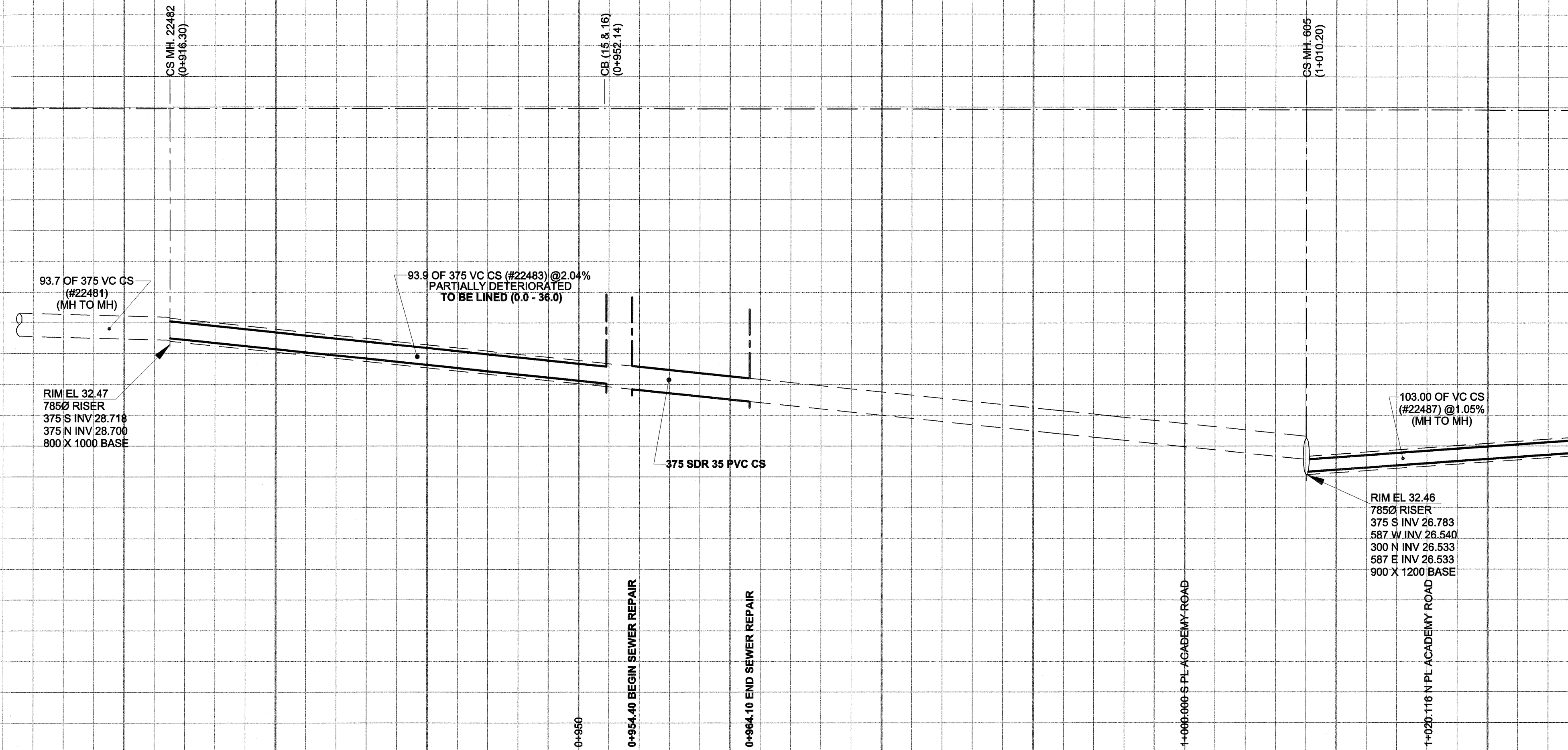


D SIZE 22" x 34" (559mm x 864mm)

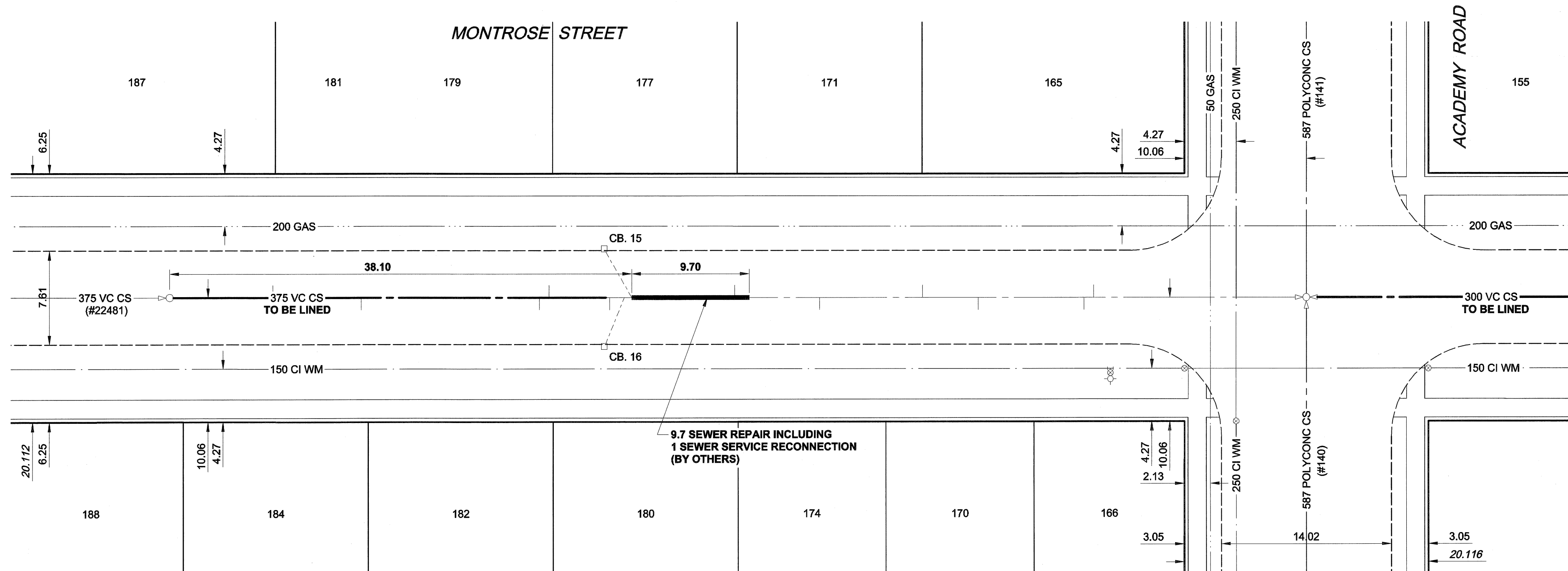
PLOT: 05/08/22 4:28:28 PM

UMA FILE NAME: D265-195-01_00-C-0007_RX.dwg Saved By: kberard

EXISTING FEATURES
233.0
232.0
231.0
230.0
229.0
228.0
227.0
226.0
225.0
224.0
CHAINAGE ALONG E.P.



233.0
232.0
231.0
230.0
229.0
228.0
227.0
226.0
225.0
224.0



SEWER JUNCTION INFORMATION*

REF. MH	DIST FROM REF. MH	SIZE	CLOCK AT
22482	8.50	150Ø	10
22482	15.80	150Ø	02
22482	30.50	150Ø	02
22482	31.30	150Ø	10
22482	36.30	150Ø	02
22482	37.50	150Ø	02
22482	38.10	150Ø	10
22482	46.80	150Ø	10
22482	53.80	150Ø	02
22482	62.10	150Ø	10
22482	66.70	150Ø	02
22482	75.40	150Ø	02
22482	76.20	150Ø	10

*JUNCTION LOCATION FROM VIDEO INSPECTION

FOR FURTHER INFO SEE DWG 05623

WARNING
 IF POWER EQUIPMENT OR EXPLOSIVES ARE TO BE USED FOR EXCAVATION ON THIS PROJECT, THE CONTRACTOR MUST:
 1) NOTIFY THE GAS COMPANY OF THE PROPOSED LOCATION OF EXCAVATION.
 2) TAKE PRECAUTION TO AVOID DAMAGE TO GAS COMPANY INSTALLATIONS.
 SEE PROVINCIAL REGULATION 140/92 FOR DETAILS

METRIC
 WHOLE NUMBERS INDICATE MILLIMETRES
 DECIMALIZED NUMBERS INDICATE METRES

APGM
 Certificate of Authorization
 UMA Engineering Ltd.
 No. 256 Expiry: April 30, 2006

BID OPPORTUNITY NO. 498-2005

150 mm WM	WATERMAIN	150 mm WM	150 mm WM	CURB STOP	150 mm WM	WATERMAIN	150 mm WM
	HYDRANT					HYDRANT	
	VALVE					VALVE	
	LAND DRAINAGE SEWER					LAND DRAINAGE SEWER	
	WASTE WATER SEWER					WASTE WATER SEWER	
	MANHOLE					MANHOLE	
	CATCH BASIN					CATCH BASIN	
	CURB INLET					TESTHOLE	
	CULVERT					LAMP STANDARD	
	PIPE ABANDONMENTS					TREE	
	SURVEY BAR						
	EXISTING					EXISTING	
	NEW					NEW	
	NEW					EXISTING	
	NEW					NEW	

LOCATION APPROVED
 UNDERGROUND STRUCTURES

SUPR. U/G STRUCTURES DATE COMMITTEE

NOTE:
 LOCATION OF UNDERGROUND STRUCTURES AS SHOWN ARE BASED ON THE BEST INFORMATION AVAILABLE. BUT NO GUARANTEE IS GIVEN THAT ALL EXISTING UTILITIES ARE SHOWN OR THAT THE GIVEN LOCATIONS ARE EXACT. CONFIRMATION OF EXISTENCE AND EXACT LOCATION OF ALL SERVICES MUST BE OBTAINED FROM THE INDIVIDUAL UTILITIES BEFORE PROCEEDING WITH CONSTRUCTION.

NO.	REVISIONS	Y/M/D	BY
0	ISSUED FOR CONSTRUCTION	05/08/22	KMB

UMA AECOM	
© 2005 UMA ENGINEERING LTD. ALL RIGHTS RESERVED.	
DESIGNED BY ALD / MJR	CHECKED BY <i>JM</i>
DRAWN BY KMB	APPROVED BY <i>CC</i>
HOR. SCALE 1:250	RELEASED FOR CONSTRUCTION
VERT. SCALE 1:50	DATE <i>05/08/22</i>

PROFESSIONAL'S SEAL
 PROVINCE OF MANITOBA
 C.C. MACEY
 REGISTERED ENGINEER
 CONSULTANT DRAWING NO. 07
 D265-195-01

THE CITY OF WINNIPEG
 WATER AND WASTE DEPARTMENT

2005 COMBINED SEWER RENEWALS BY CIPP LINING

MONTROSE STREET
 1ST MH S OF ACADEMY ROAD TO MH AT ACADEMY ROAD

SHEET 7 OF 15
 CITY DRAWING NUMBER 05622
 REV 0