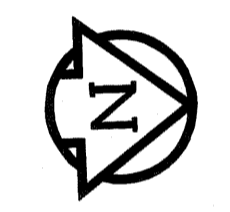
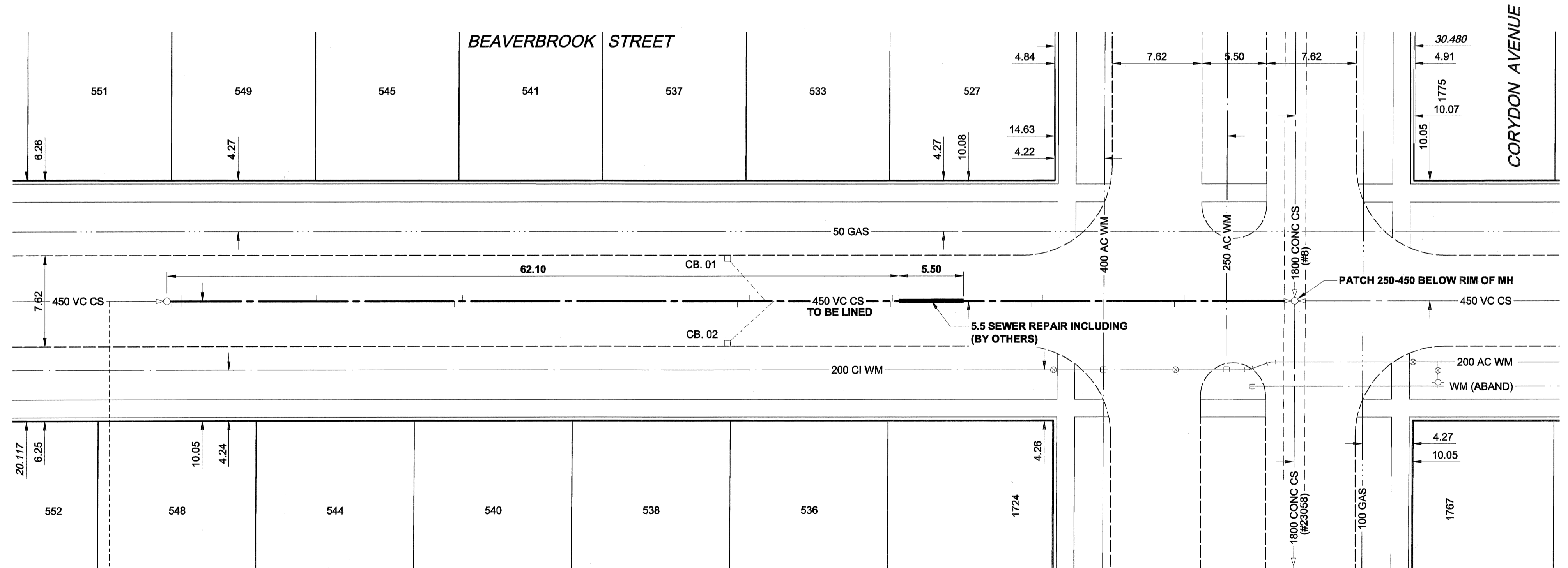
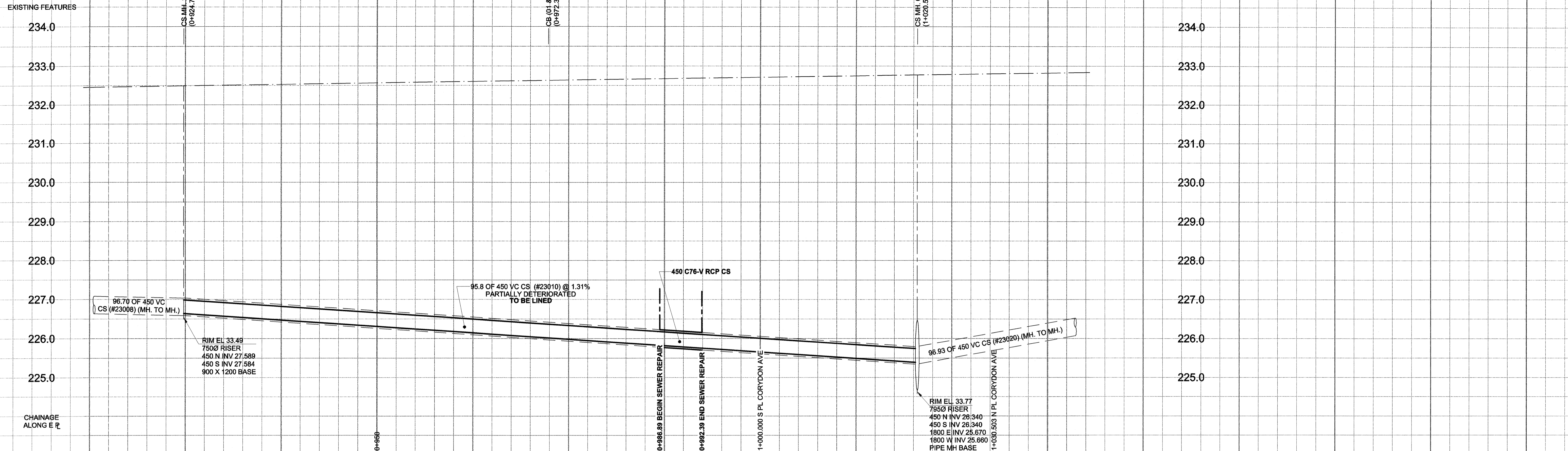


D SIZE 22" x 34" (559mm x 864mm)

PLOT: 05/08/22 4:23:57 PM

UMA FILE NAME: D265-195-01_00-C-0001_RX.dwg Saved By: kberard



SEWER JUNCTION INFORMATION*

REF. MH	DIST FROM	SIZE	CLOCK AT
23009	0.40	1500	02
23009	1.20	1500	02
23009	1.20	1500	10
23009	12.70	1500	11
23009	24.40	1500	01
23009	25.10	1500	11
23009	37.50	1500	02
23009	37.50	1500	10
23009	48.40	1500	01
23009	49.40	1500	11
23009	50.80	2000	11
23009	51.50	2000	01
23009	61.40	1500	03
23009	61.60	1500	11
23009	73.40	1500	02
23009	74.30	1500	10
23009	85.80	1500	01
615	9.4	1500	01

*JUNCTION LOCATION FROM VIDEO INSPECTION

WARNING
 IF POWER EQUIPMENT OR EXPLOSIVES ARE TO BE USED FOR EXCAVATION ON THIS PROJECT, THE CONTRACTOR MUST:
 1) NOTIFY THE GAS COMPANY OF THE PROPOSED LOCATION OF EXCAVATION.
 2) TAKE PRECAUTION TO AVOID DAMAGE TO GAS COMPANY INSTALLATIONS.
 SEE PROVINCIAL REGULATION 140/92 FOR DETAILS

METRIC
 WHOLE NUMBERS INDICATE MILLIMETRES
 DECIMALIZED NUMBERS INDICATE METRES

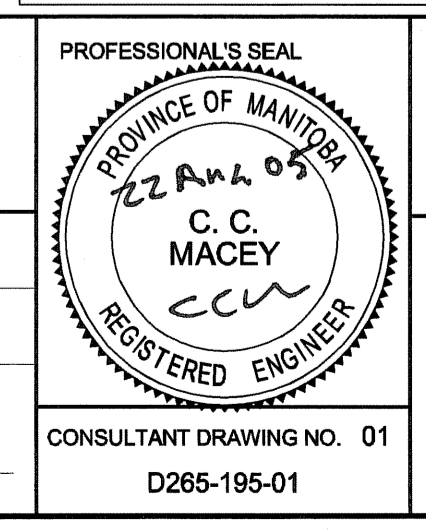
150 mm WM		150 mm WM		150 mm WM		150 mm WM		150 mm WM		150 mm WM		150 mm WM		150 mm WM	
	WATERMAIN		HYDRANT		VALVE		LAND DRAINAGE SEWER		WASTE WATER SEWER		PAVEMENT CROWN		N/W PROPERTY LINE		S/E PROPERTY LINE
	MANHOLE		CATCH BASIN		CURB INLET		CULVERT		PIPE ABANDMENTS		SURVEY BAR		CURB STOP		REDUCER
	COUPLING		ANODE		HYDRO		MTS		GAS		TESTHOLE		LAMP STANDARD		TREE
	EXISTING		NEW		EXISTING		NEW		EXISTING		NEW		EXISTING		NEW

LOCATION APPROVED
 UNDERGROUND STRUCTURES
 SUPR. U/G STRUCTURES DATE COMMITTEE
 NOTE:
 LOCATION OF UNDERGROUND STRUCTURES AS SHOWN ARE BASED ON THE BEST INFORMATION AVAILABLE. BUT NO GUARANTEE IS GIVEN THAT ALL EXISTING UTILITIES ARE SHOWN OR THAT THE GIVEN LOCATIONS ARE EXACT. CONFIRMATION OF EXISTENCE AND EXACT LOCATION OF ALL SERVICES MUST BE OBTAINED FROM THE INDIVIDUAL UTILITIES BEFORE PROCEEDING WITH CONSTRUCTION.

NO.	REVISIONS	YYMMDD	BY
0	ISSUED FOR CONSTRUCTION	05/08/22	KMB

DESIGNED BY: ALD / MJR		CHECKED BY: <i>[Signature]</i>	
DRAWN BY: KMB		APPROVED BY: <i>[Signature]</i>	
HOR. SCALE: 1:250		RELEASED FOR CONSTRUCTION: <i>[Signature]</i>	
VERT. SCALE: 1:50		DATE: <i>05/22/22</i>	

UMA AECOM
 Certificate of Authorization
 UMA Engineering Ltd.
 No. 256 Expiry: April 30, 2006



THE CITY OF WINNIPEG
 WATER AND WASTE DEPARTMENT

2005 COMBINED SEWER RENEWALS BY CIPP LINING

BEAVERBROOK STREET
 1ST MH S OF CORYDON AVENUE TO MH AT CORYDON AVENUE

SHEET 1 OF 15
 CITY DRAWING NUMBER **05616** REV 0

BID OPPORTUNITY NO. 498-2005