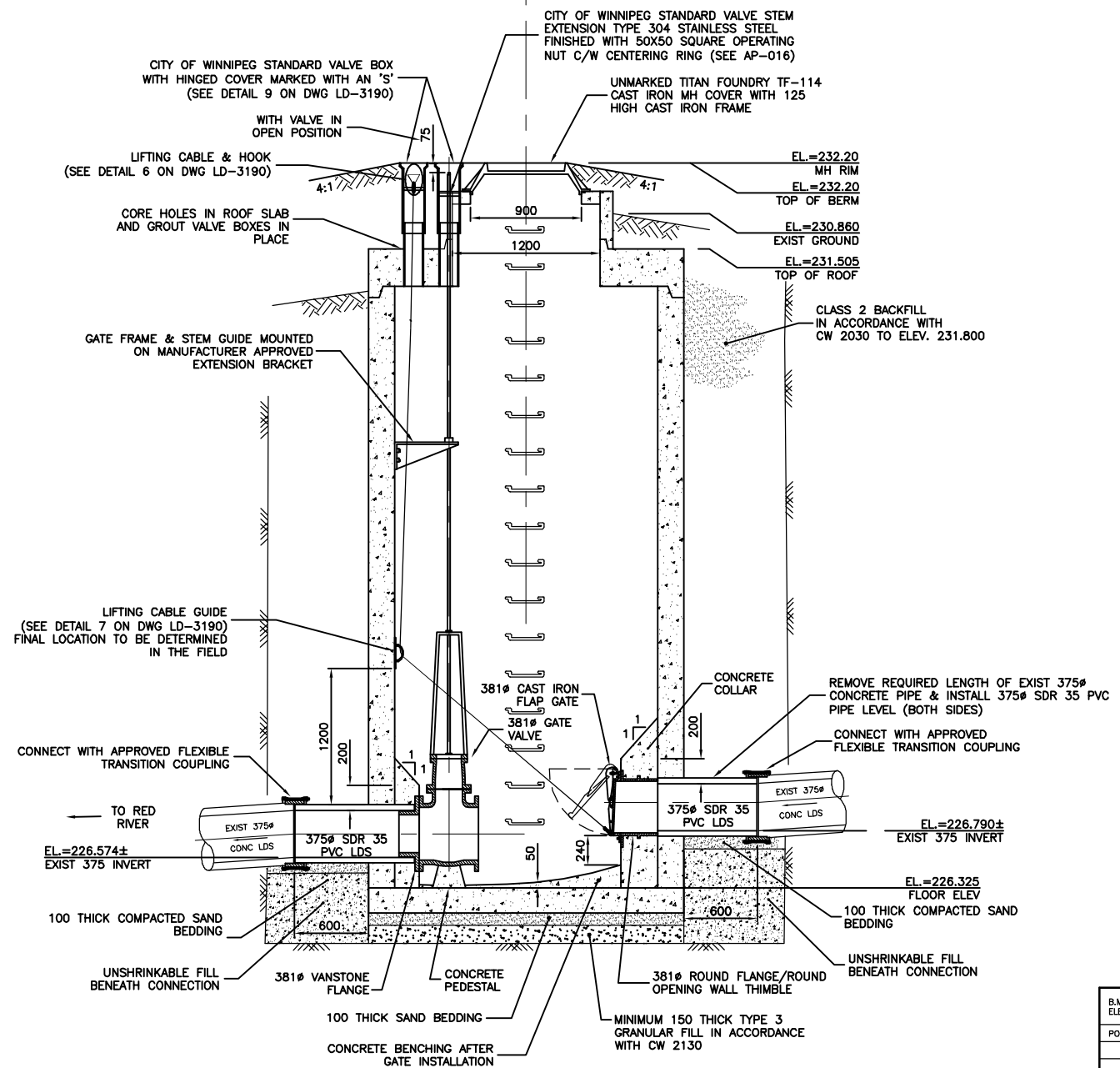


PLAN AT ELEV. 231.00
SCALE: 1:25



A SECTION
1:25

- NOTES:**
1. CHAMBER LOCATION AND SEWER DETAILS ARE SHOWN ON DRAWING NO. LD-3185.
 2. ALL NUTS, BOLTS, AND ANCHORS TO BE TYPE 316 STAINLESS STEEL.
 3. INSTALL PRECAST CONCRETE GATE CHAMBER IN ACCORDANCE CW 2130.
 4. CONFIRM EXISTING LDS LOCATION, DIAMETER AND INVERT BEFORE CONSTRUCTING CHAMBER.

FLOOD PROTECTION LEVEL = 230.98
300 YEAR FLOOD ELEV. = 232.20
DESIGN HEAD ON 375# FLAP GATE = 5.2
DESIGN HEAD ON 375# GATE VALVE = 5.4

METRIC
WHOLE NUMBERS INDICATE MILLIMETRES
DECIMALIZED NUMBERS INDICATE METRES

WARNING

IF POWER EQUIPMENT OR EXPLOSIVES ARE TO BE USED FOR EXCAVATION ON THIS PROJECT THE CONTRACTOR MUST:
1) NOTIFY THE GAS COMPANY OF THE PROPOSED LOCATION OF EXCAVATION.
2) TAKE PRECAUTION TO AVOID DAMAGE TO GAS COMPANY INSTALLATIONS.
SEE PROVINCIAL REGULATION 210/72 FOR DETAILS

B.M. ELEV.	FIELD BOOK #:
POSTED TO LBS	
DESIGNED BY	DGS
CHECKED BY	TW
DRAWN BY	HL/CJH
APPROVED BY	KZ
HOR. SCALE	AS SHOWN
VERTICAL SCALE	SHOWN
NO. REVISIONS	DATE BY
	DATE 2005 08 31

CITY OF WINNIPEG
WATER AND WASTE
ENGINEERING DIVISION

DESIGNED BY: DGS
CHECKED BY: TW
DRAWN BY: HL/CJH
APPROVED BY: KZ
HOR. SCALE: AS SHOWN
VERTICAL SCALE: SHOWN
DATE: 2005 08 31

ENGINEER'S SEAL
ORIGINAL SIGNED BY K.R. ZUREK
05/09/01

BID OPPORTUNITY: 493-2005
FILENAME: LD-3186.dwg
PLOT DATE: 2005 08 31

THE CITY OF WINNIPEG
WATER AND WASTE DEPARTMENT

2005 OUTFALL GATE CHAMBER UPGRADES

ELM PARK ROAD
LDS OUTFALL GATE CHAMBER
DETAILS

SHEET 5 OF 9
CITY DRAWING NUMBER
LD-3186