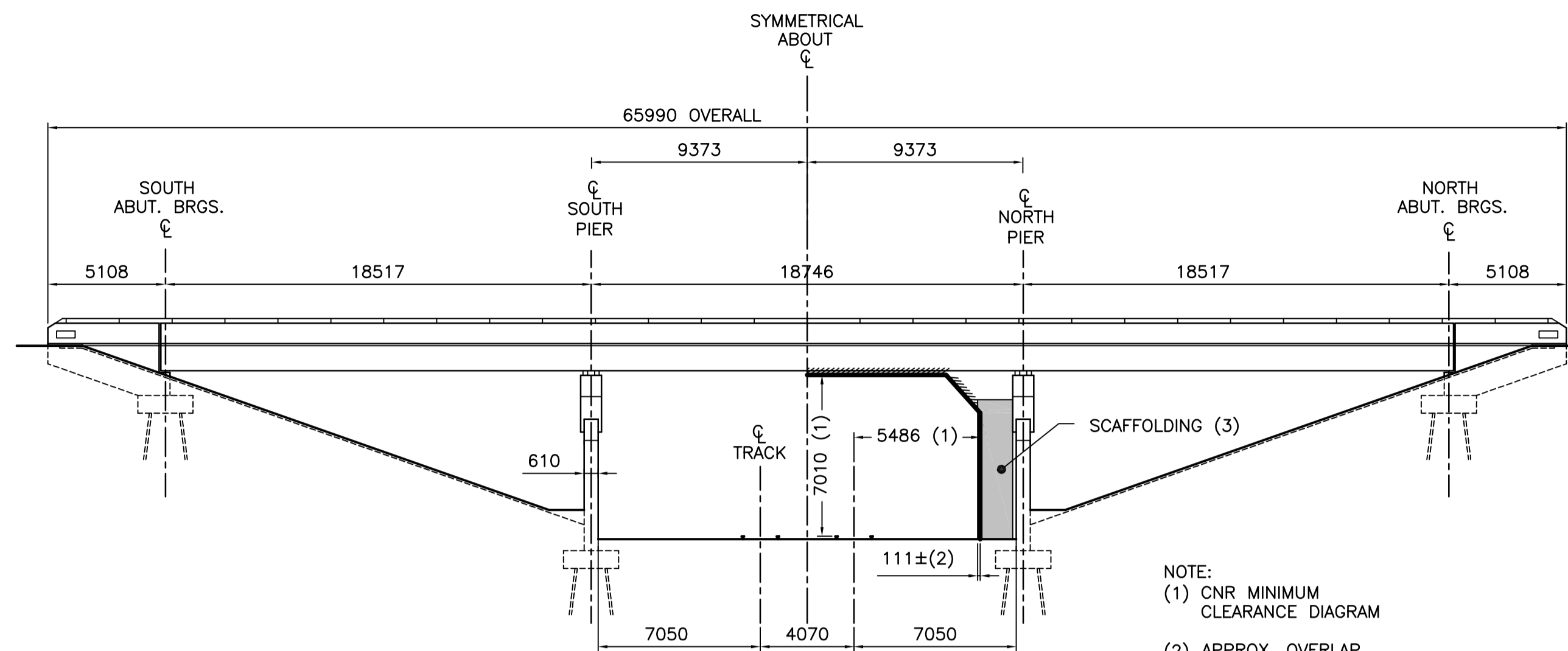
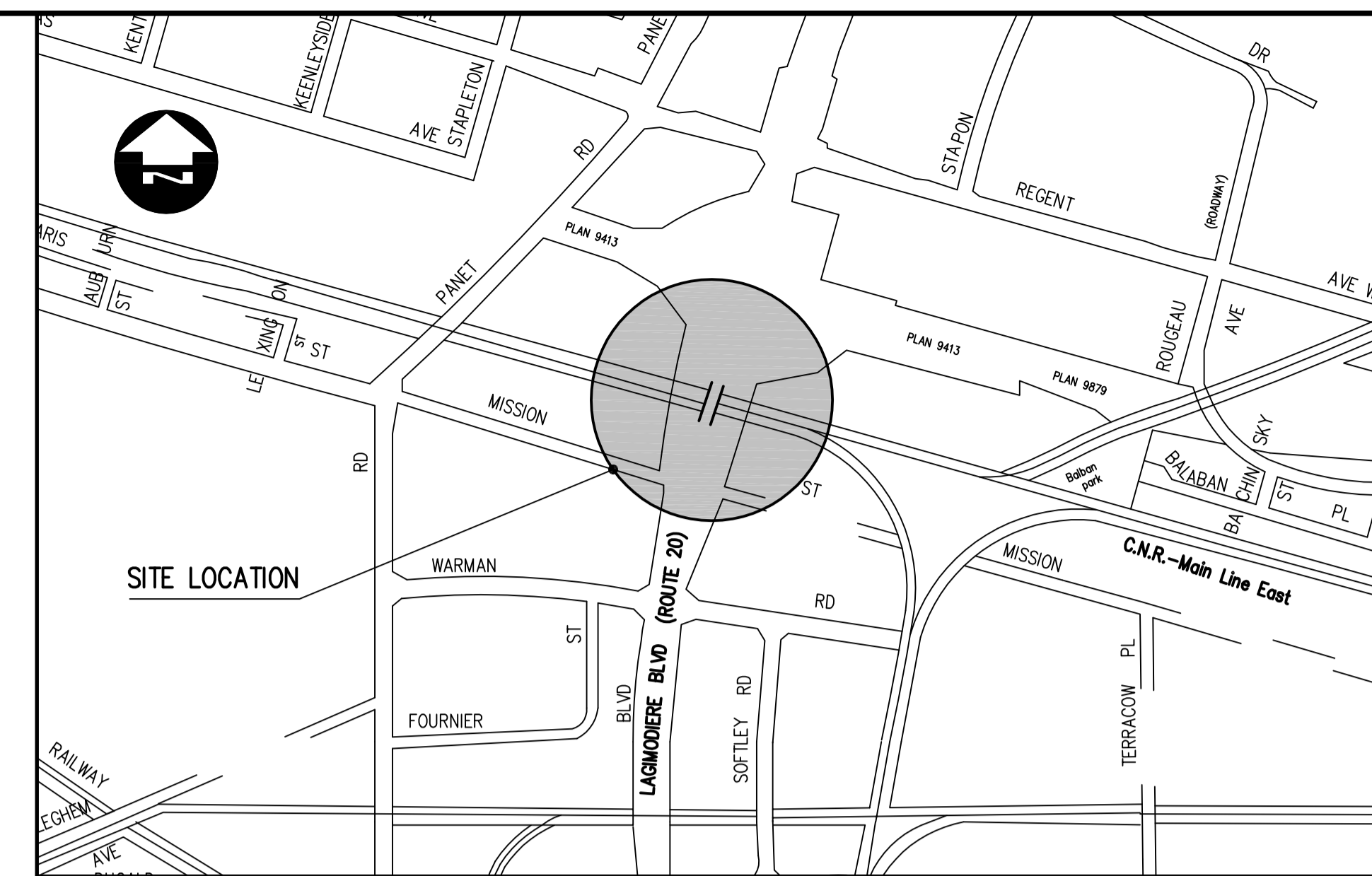


TYPICAL BRIDGE SECTION
1 : 200

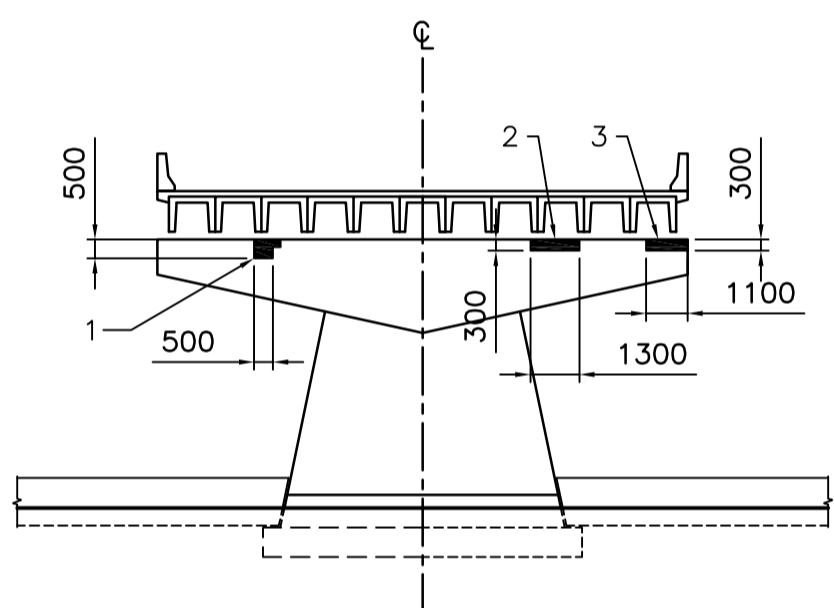


ELEVATION
1 : 200

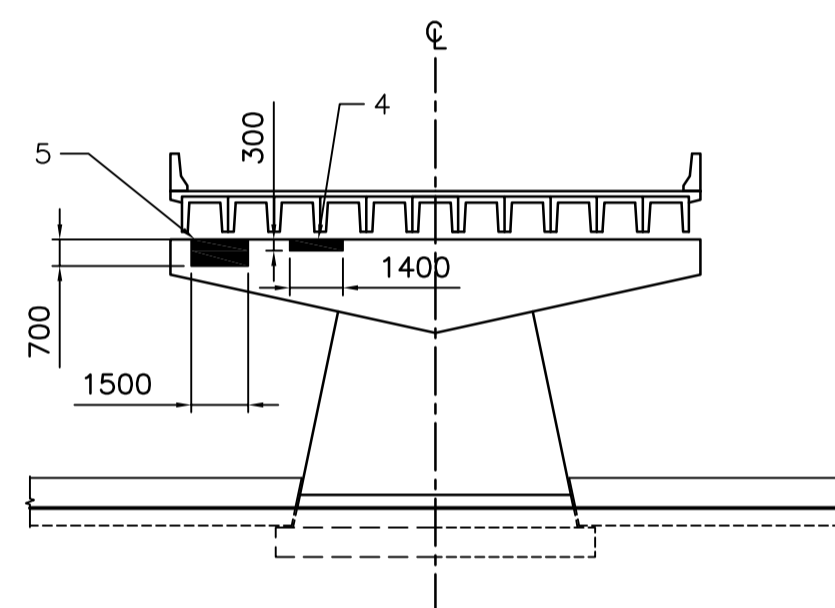
- NOTE:
 (1) CNR MINIMUM CLEARANCE DIAGRAM
 (2) APPROX. OVERLAP, PERMITTED BY CNR
 (3) APPROX. WIDTH OF SCAFFOLDING IS 1524



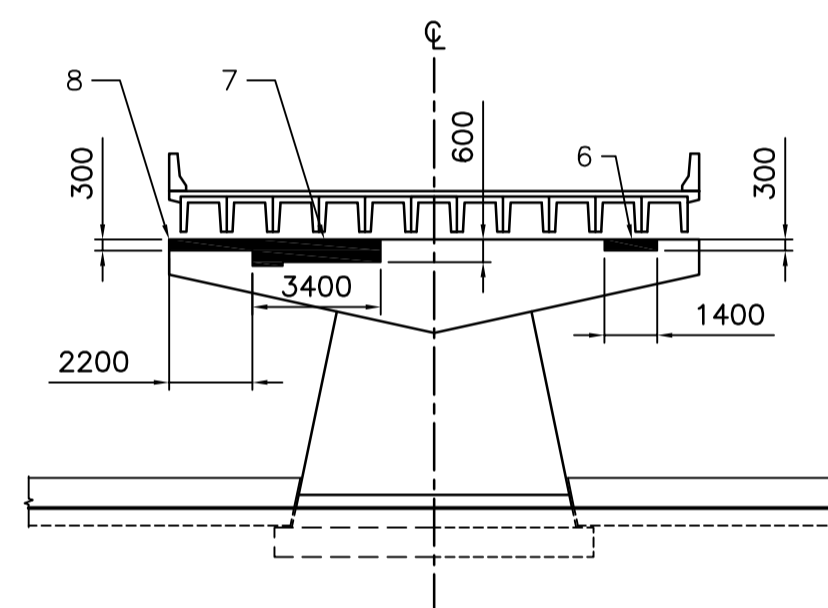
LOCATION PLAN



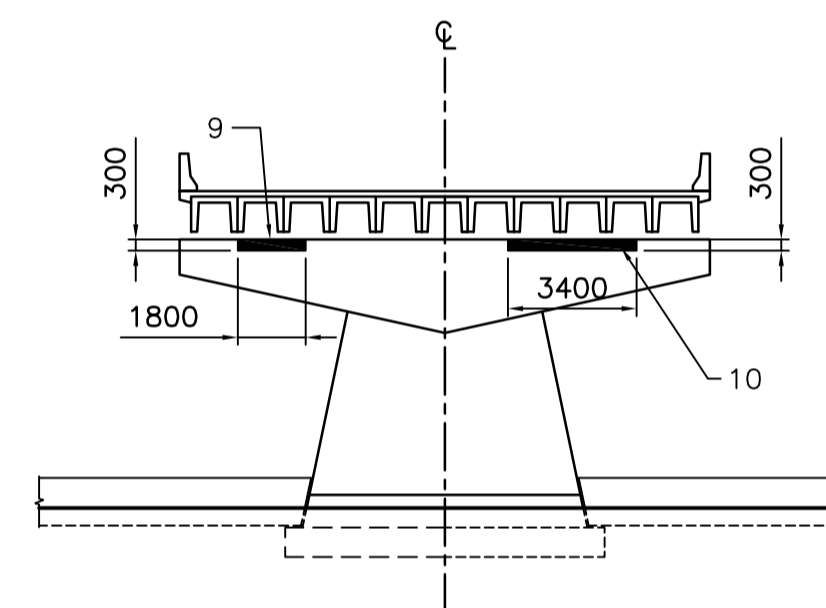
SOUTHBOUND
NORTH PIER
NORTH FACE



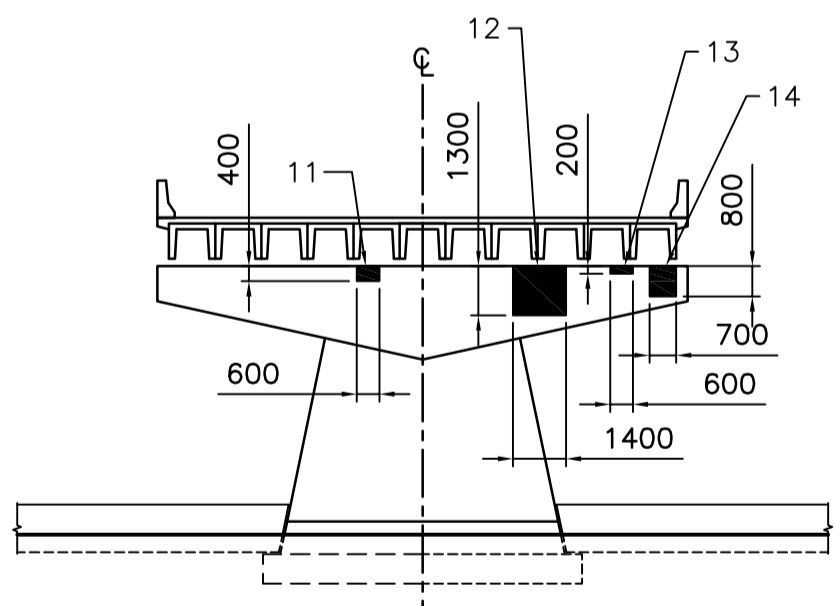
SOUTHBOUND
NORTH PIER
SOUTH FACE



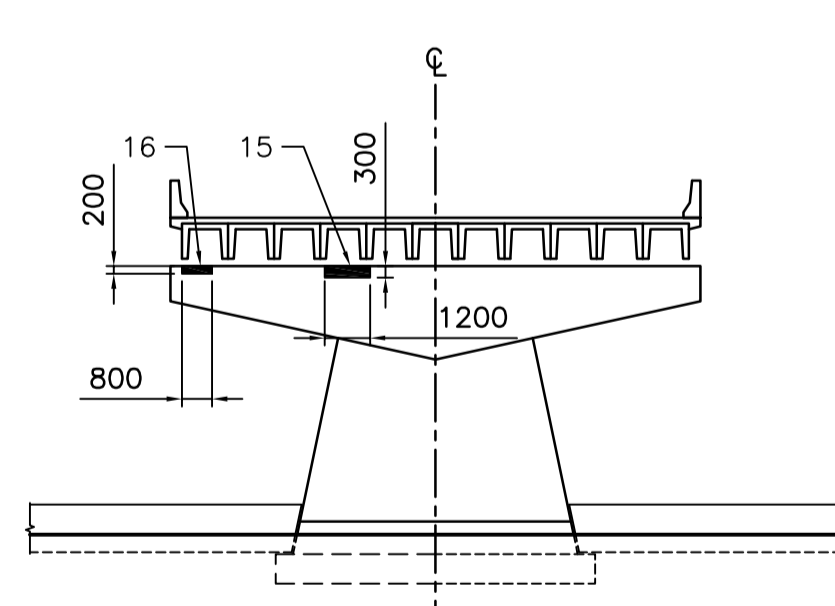
SOUTHBOUND
SOUTH PIER
SOUTH FACE



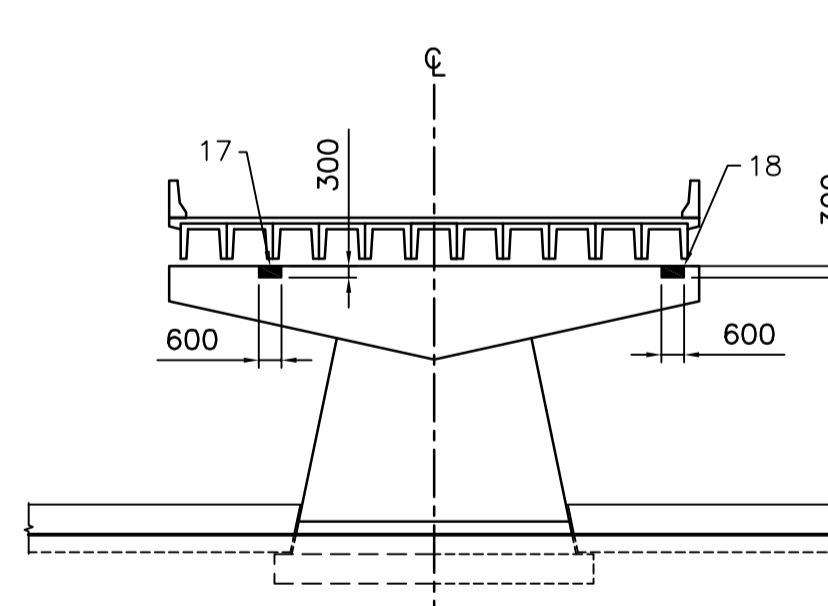
SOUTHBOUND
SOUTH PIER
NORTH FACE



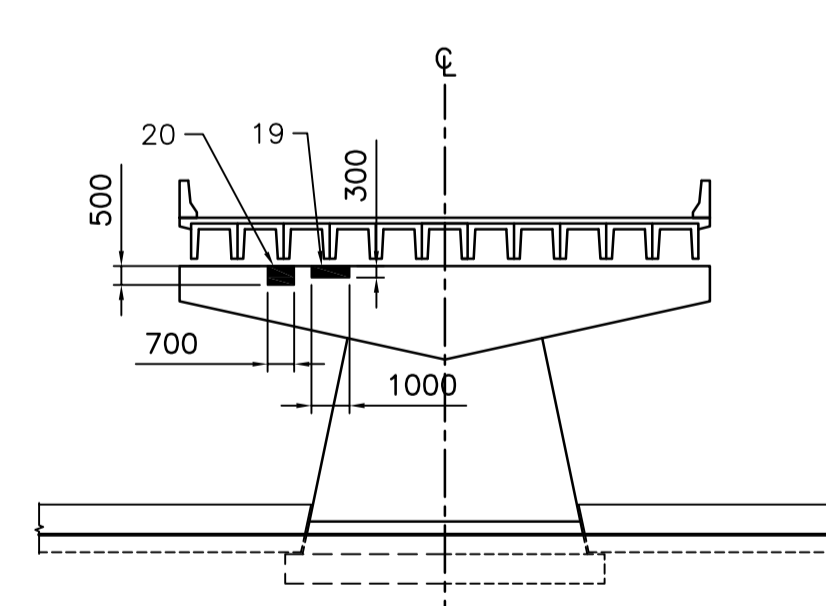
NORTHBOUND
SOUTH PIER
SOUTH FACE



NORTHBOUND
SOUTH PIER
NORTH FACE



NORTHBOUND
NORTH PIER
NORTH FACE



NORTHBOUND
NORTH PIER
SOUTH FACE

APPROX. CONCRETE REPAIR AREAS				
REPAIR #	BRIDGE	PIER	FACE	AREA (SQ.M)
1	SOUTHBOUND	NORTH	NORTH	0.25
2	SOUTHBOUND	NORTH	NORTH	0.39
3	SOUTHBOUND	NORTH	NORTH	0.33
4	SOUTHBOUND	NORTH	SOUTH	0.42
5	SOUTHBOUND	NORTH	SOUTH	1.05
6	SOUTHBOUND	SOUTH	SOUTH	0.42
7	SOUTHBOUND	SOUTH	SOUTH	2.04
8	SOUTHBOUND	SOUTH	SOUTH	0.66
9	SOUTHBOUND	SOUTH	NORTH	0.54
10	SOUTHBOUND	SOUTH	NORTH	1.02
SUBTOTAL =				7.12
11	NORTHBOUND	SOUTH	SOUTH	0.24
12	NORTHBOUND	SOUTH	SOUTH	1.82
13	NORTHBOUND	SOUTH	SOUTH	0.12
14	NORTHBOUND	SOUTH	NORTH	0.56
15	NORTHBOUND	SOUTH	NORTH	0.36
16	NORTHBOUND	NORTH	NORTH	0.16
17	NORTHBOUND	NORTH	NORTH	0.18
18	NORTHBOUND	NORTH	SOUTH	0.18
19	NORTHBOUND	NORTH	SOUTH	0.30
20	NORTHBOUND	NORTH	SOUTH	0.35
SUBTOTAL =				4.27
TOTAL =				11.39

NOTES:

1. REFER TO SPECIFICATIONS FOR CONCRETE REPAIR METHODS

LEGEND

■ APPROX. CONCRETE REPAIRS

DETAILS

1 : 200



B.M. ELEV.	DESIGNED BY: M.R.D.		ENGINEER'S SEAL
	DRAWN BY: M.R.D.		
	CHECKED BY: R.A.W.		
	REVIEWED BY: S.S.R.		
	SCALE: HORZ. AS SHOWN VERT.		
	DATE: JULY 2005		
	AUTHORIZED BY:	DATE:	CONSULTANT PROJECT NO.
NO. REVISIONS	DATE	BY	05-4421-1000
		CITY BRIDGE ENGINEER	

BID OPPORTUNITY NO. 449-2005

THE CITY OF WINNIPEG
PUBLIC WORKS DEPARTMENT

2005 BRIDGE MAINTENANCE
ROUTE 20 AT REDDITT TWIN OVERPASS
CONCRETE REPAIRS

CITY DRAWING NUMBER
B122-05-01
SHEET 1 OF 1

PIER ELEVATIONS AND DETAILS