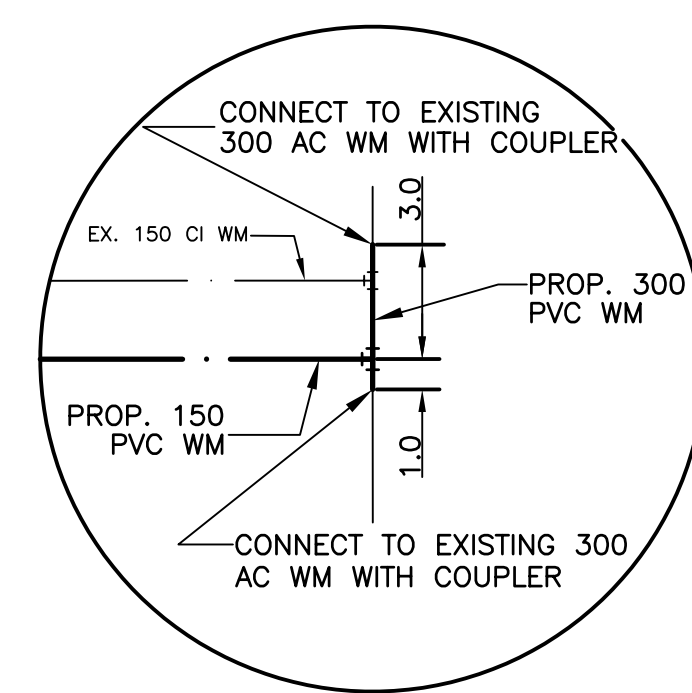
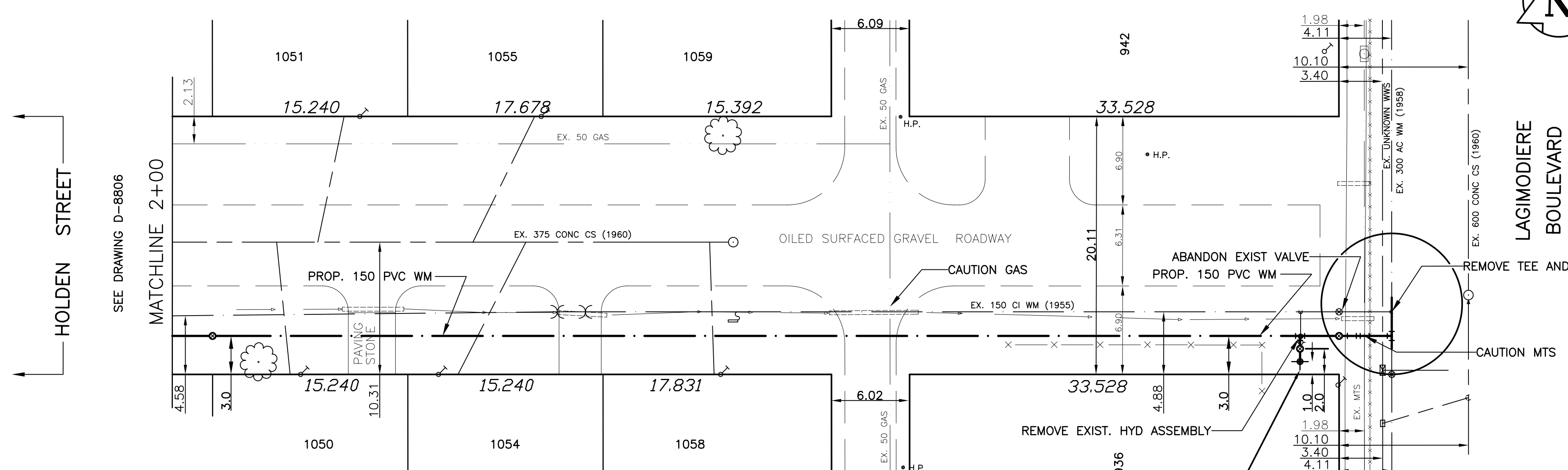


CHAINAGE ALONG THE SOUTH PROPERTY LINE OF BLAIR STREET

BLAIR STREET



ADDRESS	SIZE(mm) & TYPE	SIZE(mm) & TYPE	SHORT & LONG MEASUREMENT	CORP LOCATION	REMARKS
1050 BLAIR ST RESIDENTIAL	19 COPPER	19 COPPER	4.9 N/SHL		
1051 BLAIR ST RESIDENTIAL	19 COPPER	19 COPPER	2.4 LRHL		
1054 BLAIR ST RESIDENTIAL	19 COPPER	19 COPPER	25.8 FROM HYD		
1055 BLAIR ST RESIDENTIAL	19 COPPER	19 COPPER	1.5 LRHL		
1055 BLAIR ST RESIDENTIAL	19 COPPER	19 COPPER	25.9 FROM HYD		
1055 BLAIR ST RESIDENTIAL	19 COPPER	19 COPPER	4.0 LR CR OF HSE		
1055 BLAIR ST RESIDENTIAL	19 COPPER	19 COPPER	37.8 FROM HYD		
1058 BLAIR ST RESIDENTIAL	19 COPPER	19 COPPER	0.8 LLHL	47.9	
1058 BLAIR ST RESIDENTIAL	19 COPPER	19 COPPER	FROM HYD		
1059 BLAIR ST RESIDENTIAL	19 COPPER	19 COPPER	10.7 LLHL	49.7	
1059 BLAIR ST RESIDENTIAL	19 COPPER	19 COPPER	FROM HYD		
936 LAGIMODIERE BLVD RESIDENTIAL	19 COPPER	19 COPPER			
942 LAGIMODIERE BLVD RESIDENTIAL	19 COPPER	19 COPPER	1.2 S/N	27.0	OLD BLDG ON LANE SEE PERMIT 6019
			N OF HYD		

INSTALL NEW HYDRANT ASSEMBLY AS PER SD 006

- NOTES:**
- ALL GATE VALVES ARE TO BE COUNTER-CLOCKWISE TO OPEN WITH A BLACK OPERATING NUT.
 - WATERMAIN TO BE INSTALLED BY TRENCHLESS METHODS.
 - BACKFILL IS CLASS 5 WITHIN BOULEVARD AND CLASS 3 WHEN WITHIN PAVEMENT/SIDEWALK OR WHEN WITHIN 1.0m OF PAVEMENT OR SIDEWALK.
 - WATER SERVICES ARE 19mm UNLESS OTHERWISE NOTED.
 - MINIMUM COVER TO TOP OF WATERMAIN SHALL BE 2.4m.
 - LOCATION OF ALL SERVICES TO BE CONFIRMED IN FIELD.
 - EXPOSE EXISTING WATERMAIN TO CONFIRM DEPTH PRIOR TO CONSTRUCTION.
 - ALL LEAD SERVICES TO BE RENEWED.
 - SERVICES TO BE RENEWED SHALL BE REPLACED FROM WATERMAIN TO PROPERTY LINE. ALL OTHERS TO BE RECONNECTED.

METRIC
WHOLE NUMBERS INDICATE MILLIMETRES
DECIMALIZED NUMBERS INDICATE METRES

APEGM
Certificate of Authorization
SEG Engineering Inc.
No. 1432 Expiry: April 30, 2006

EXISTING	LEGEND - PLAN	PROPOSED	EXISTING	LEGEND - PLAN	PROPOSED	EXISTING	LEGEND - PROFILE	PROPOSED
—	WATERMAIN	—	—	HYDRO	—	—	CENTER LINE	—
—	HYDRANT	—	—	M.T.S.	—	—	NORTH GUTTER LINE	—
—	VALVE	—	—	CONCRETE	—	—	SOUTH GUTTER LINE	—
—	LAND DRAINAGE SEWER	—	—	ASPHALT	—	—	WATERMAIN	—
—	WASTE WATER SEWER	—	—	PROPERTY LINE	—	—	VALVE	—
—	MANHOLE	—	—	SURVEY BAR	—	—	LAND DRAINAGE SEWER	—
—	CATCH BASIN	—	—	CURB STOP	—	—	WASTE WATER SEWER	—
—	CURB INLET	—	—	C.B. LEAD	—	—	JUNCTIONS	—
—	TRAFFIC SIGNAL	—	—	SIDEWALK	—	—	CULVERT	—
—	STEAM HT.	—	—	SIDEWALK RAMP	—	—	ANODE	—
—	GAS	—	—	ELEVATIONS	—	—	PLUG	—
—		—	—		—	—		—

LOCATION APPROVED
SUPV. U/G STRUCTURES COMMITTEE DATE
NOTE:
LOCATION OF UNDERGROUND STRUCTURES AS SHOWN ARE BASED ON THE BEST INFORMATION AVAILABLE BUT NO GUARANTEE IS GIVEN THAT ALL EXISTING UTILITIES ARE SHOWN OR THAT THE GIVEN LOCATIONS ARE EXACT. CONFIRMATION OF EXISTENCE AND EXACT LOCATION OF ALL SERVICES MUST BE OBTAINED FROM THE INDIVIDUAL UTILITIES BEFORE PROCEEDING WITH CONSTRUCTION.

NO.	REVISIONS	DATE	BY

SEG ENGINEERING INC.
200 TACHE AVENUE
WINNIPEG, MANITOBA
(204)-233-2113

DESIGNED BY: DJ
CHECKED BY: SM
DRAWN BY: RH
APPROVED BY: IMCK
HOR. SCALE: 1:250
VERT. SCALE: 1:50
RELEASED FOR CONSTRUCTION: K. ZUREK P. ENG
ORIGINALLY SIGNED BY: K. ZUREK P. ENG
DATE: MAY 2005
DATE: JUNE 28, 2004

ENGINEERS SEAL
I. G. MCKINNON
REGISTERED PROFESSIONAL ENGINEER

THE CITY OF WINNIPEG
WATER AND WASTE DEPARTMENT

2005 CAPITAL WORKS
WATERMAIN RENEWALS
BLAIR STREET
100m EAST OF HOLDEN STREET
TO LAGIMODIERE BOULEVARD

CITY DRAWING NO.
SHEET 2 OF 2
D-8807