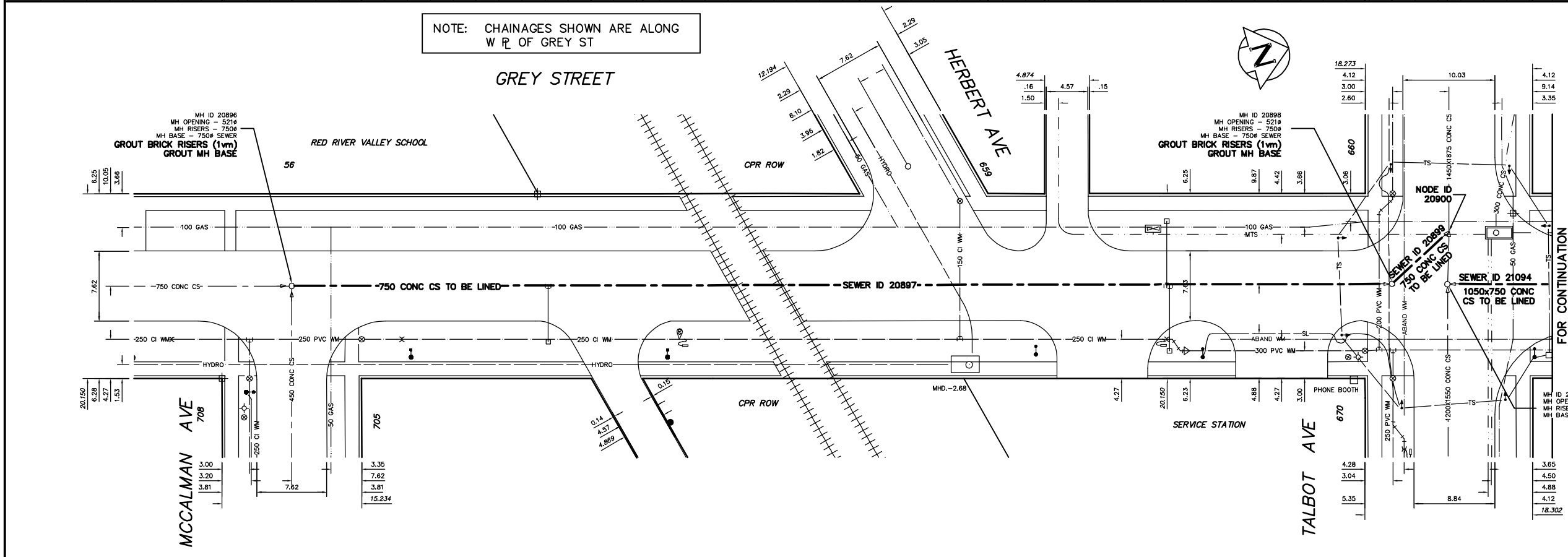


ADDRESS	SIZE	R DIST	JUNCTION TIE
56 GREY ST	200	57.3	NSPL
COMMERCIAL	CONC	21.03	S MH @ MCCALMAN AV
705 MCCALMAN AV	150	-	-
RESIDENTIAL	PVC	3.05	EEL GREY ST
706 MCCALMAN AV	-	-	-
RESIDENTIAL	-	-	NO INFORMATION AVAILABLE
659 HERBERT AV	-	-	NO INFORMATION AVAILABLE
RESIDENTIAL	-	-	32.00 E MH OPP 653 HERBERT AV
660 TALBOT AV	-	-	NO INFORMATION AVAILABLE
TALBOT AV	150	17.68	SNPL
RESIDENTIAL	-	-	25.60 S MH @ TALBOT AV

NOTE: CHAINAGES SHOWN ARE ALONG W R OF GREY ST



SEWER JUNCTION INFORMATION * SEWER ID 20897			
DISTANCE FROM MH ID 20896			
10.40 N	150#	12	JN
14.70 N	150#	12	JN
21.30 N	150#	12	JN
28.40 N	200#	1	CN
72.20 N	150#	1	CN
83.90 N	200#	11	CN
96.50 N	200#	1	CN
98.50 N	200#	11	CN
100.30 N	200#	1	CN
107.90 N	200#	11	CN
- N	150#	-	CN
- N	150#	-	CN

* INFORMATION FROM SEWER VIDEO INSPECTION

SEWER JUNCTION INFORMATION * SEWER ID 20899	
DISTANCE FROM MH ID 20898	
-	- FOR INFORMATION SEE DWG. 05587

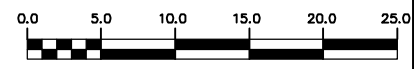
* INFORMATION FROM SEWER VIDEO INSPECTION

SEWER JUNCTION INFORMATION * SEWER ID 21094	
DISTANCE FROM MH ID 21085	
-	- FOR INFORMATION SEE DWG. 05587

* INFORMATION FROM SEWER VIDEO INSPECTION

METRIC
WHOLE NUMBERS INDICATE MILLIMETRES
DECIMALIZED NUMBERS INDICATE METRES

WARNING
IF POWER EQUIPMENT OR EXPLOSIVES ARE TO BE USED FOR EXCAVATION ON THIS PROJECT THE CONTRACTOR MUST:
1) NOTIFY THE GAS COMPANY OF THE PROPOSED LOCATION OF EXCAVATION.
2) TAKE PRECAUTION TO AVOID DAMAGE TO GAS COMPANY INSTALLATIONS.
SEE PROVINCIAL REGULATION 210/72 FOR DETAILS



200 WM	WATERMAIN	200 WM	SL, HYDRO	150 WM	WATERMAIN	150 WM
⊕	HYDRANT	⊕	MTS	⊕	HYDRANT	⊕
⊙	VALVE	⊙	TRAFFIC SIGNALS	⊙	VALVE	⊙
525 LDS	LAND DRAINAGE SEWER	525 LDS	GAS	300 LDS	LAND DRAINAGE SEWER	300 LDS
375 WWS	WASTEWATER SEWER	375 WWS	SURVEY BAR	250 WWS	WASTEWATER SEWER	250 WWS
○	MANHOLE	○	FENCE	⊕	PROFILE	⊕
□	CATCH BASIN	□	POLE - HYDRO, MTS	⊕	GROUND ABOVE PIPE	⊕
▽	CURB INLET	▽	CURB STOP	⊕	⊕ DITCH (NORTH & WEST)	⊕
⊕	JUNCTIONS	⊕	GUY ANCHOR	⊕	⊕ DITCH (SOUTH & EAST)	⊕
⊕	CULVERT	⊕	LIGHT STANDARD	⊕	⊕ GUTTER (NORTH & WEST)	⊕
⊕	ANODE	⊕	TREE	⊕	⊕ GUTTER (SOUTH & EAST)	⊕
EXISTING	LEGEND-PLAN	PROPOSED	EXISTING	LEGEND-PLAN	PROPOSED	EXISTING

LOCATION APPROVED	B.M. ELEV.	FIELD BOOK #
UNDERGROUND STRUCTURES		
SUPV. U/G STRUCTURES COMMITTEE		
DATE		
NOTE:		
LOCATION OF UNDERGROUND STRUCTURES AS SHOWN ARE BASED ON THE BEST INFORMATION AVAILABLE BUT NO GUARANTEE IS GIVEN THAT THE GIVEN LOCATIONS ARE EXACT. CONFIRMATION OF EXISTENCE AND EXACT LOCATION OF ALL SERVICES MUST BE OBTAINED FROM THE INDIVIDUAL UTILITIES BEFORE PROCEEDING WITH CONSTRUCTION.		
NO. REVISIONS	DATE	BY

CITY OF WINNIPEG
WATER AND WASTE
ENGINEERING DIVISION

DESIGNED BY: TW
CHECKED BY: KZ

DRAWN BY: BAW
APPROVED BY: KZ

HOR. SCALE: 1:250
VERTICAL: 1:50

RELEASED FOR CONSTRUCTION

DATE: 2005 06 23

ENGINEER'S SEAL

ORIGINAL SIGNED BY K.R. ZUREK
05/06/30

BID OPPORTUNITY: 385-2005
FILENAME: 05586_05587.dwg
PLOT DATE: 2005 06 23

THE CITY OF WINNIPEG
WATER AND WASTE DEPARTMENT

2005 COMBINED SEWER RENEWALS
BY CIPP LINING
GREY STREET
MH AT MCCALMAN AVENUE TO
MH AT TALBOT AVENUE (⊕)

SHEET 4 OF 7
CITY DRAWING NUMBER
05586