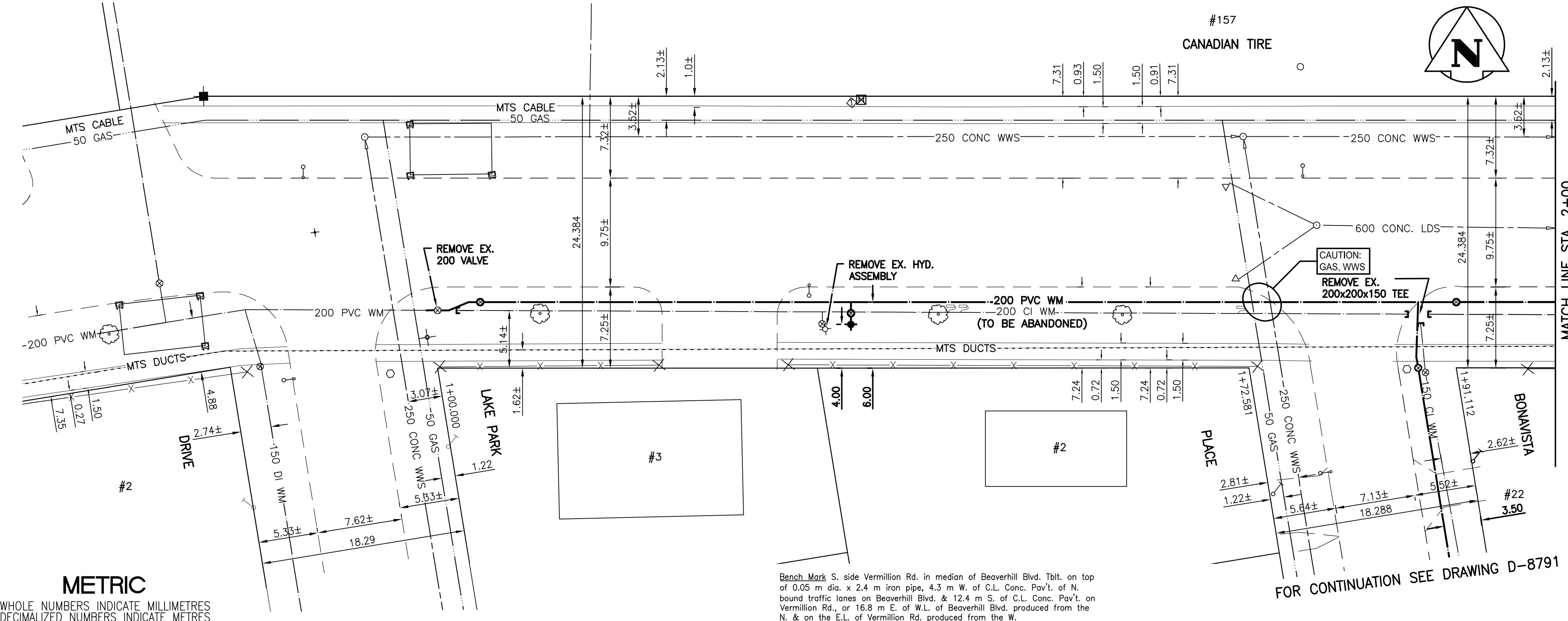


VERMILLION ROAD



ADDRESS AND SERVICE	SIZE (mm) & TYPE (STREET)	STOP COCK SHORT & LONG MEASUREMENT (m)	CORPORATION LOCATION
157 VERMILLION ROAD COMMERCIAL	200 POLY V	N/A	N/A
157 VERMILLION ROAD SPRINKLER	N/A	30.78 LR BLDG. CORN.	N/A
2 LAKE PARK DRIVE RESIDENTIAL	19 COPPER	7.10 SNLL	N/A
3 LAKE PARK DRIVE RESIDENTIAL	19 COPPER	7.10 SSL OF VERMILLION RD	N/A
		7.68 NSLL	N/A
		13.67 SSL OF VERMILLION RD	N/A

- CONSTRUCTION NOTES:
- EXPOSE EXISTING WATERMAIN & CONFIRM INVERTS PRIOR TO CONSTRUCTION.
 - CONFIRM LOCATION OF ALL SERVICES IN THE FIELD.
 - INSTALL WATERMAIN BY TRENCHLESS METHODS.
 - TRENCHES AND EXCAVATIONS WITHIN 1 METRE OF A PAVED AREA INCLUDING SIDEWALKS SHALL BE CLASS 3 BACKFILL.
 - ALL MATERIALS SHALL CONFORM TO THE CITY OF WINNIPEG STANDARD CONSTRUCTION SPECIFICATIONS.
 - MINIMUM COVER SHALL BE 2.4m.
 - REPLACE ALL EXISTING LEAD SERVICES FROM PROPOSED WATERMAIN TO PL.
 - NOTIFY ALL AFFECTED RESIDENTS AND BUSINESSES 24 HOURS IN ADVANCE OF ANY WATER SHUTDOWNS OR DISRUPTION OF SERVICE.

APEGM
Certificate of Authorization
Stantec Consulting Ltd.
No. 1301 Expiry: April 30, 2006

WARNING

IF POWER EQUIPMENT OR EXPLOSIVES ARE TO BE USED FOR EXCAVATION ON THIS PROJECT THE CONTRACTOR MUST:
 1) NOTIFY THE GAS COMPANY OF THE PROPOSED LOCATION OF EXCAVATION.
 2) TAKE PRECAUTION TO AVOID DAMAGE TO GAS COMPANY INSTALLATIONS.
 SEE PROVINCIAL REGULATION 140/92 FOR DETAILS

METRIC

WHOLE NUMBERS INDICATE MILLIMETRES
DECIMALIZED NUMBERS INDICATE METRES

EXISTING	LEGEND-PLAN	PROPOSED	EXISTING	LEGEND-PLAN	PROPOSED	EXISTING	LEGEND-PROFILE	PROPOSED
150 WM	WATERMAIN	150 WM	HYDRO	M.T.S.	150 WM	WATERMAIN	150 WM	WATERMAIN
300 LBS	LAND DRAINAGE SEWER	300 LBS	CONCRETE	HYDRANT, VALVE	300 LBS	LAND DRAINAGE SEWER	300 LBS	LAND DRAINAGE SEWER
250 WWS	WASTE WATER SEWER	250 WWS	ASPHALT	CONCRETE	250 WWS	WASTE WATER SEWER	250 WWS	WASTE WATER SEWER
	MANHOLE		PROPERTY LINE	PROPERTY LINE		EX. GROUND PROFILE		EX. GROUND PROFILE
	CATCH BASIN		SURVEY BAR	SURVEY BAR				
	CURB INLET		DITCH	DITCH				
	JUNCTIONS		ELEVATION	ELEVATION				
	SIGN		CURB STOP	CURB STOP				
	GAS		ANODE	ANODE				

LOCATION APPROVED UNDERGROUND STRUCTURES

SUPV. U/G STRUCTURES COMMITTEE DATE

NOTE:
LOCATION OF UNDERGROUND STRUCTURES AS SHOWN ARE BASED ON THE BEST INFORMATION AVAILABLE BUT NO GUARANTEE IS GIVEN THAT ALL EXISTING UTILITIES ARE SHOWN OR THAT THE GIVEN LOCATIONS ARE EXACT. CONFIRMATION OF EXISTENCE AND EXACT LOCATION OF ALL SERVICES MUST BE OBTAINED FROM THE INDIVIDUAL UTILITIES BEFORE PROCEEDING WITH CONSTRUCTION.

B.M. 55-034
ELEV. 232.985m

DESIGNED BY	J.H.	CHECKED BY	C.L.D./W.B.
DRAWN BY	R.M.	APPROVED BY	C.L.D.
HOR. SCALE:	1:250	RELEASED FOR CONSTRUCTION:	K. ZUREK P. ENG.
VERTICAL:	1:50	DATE	06.23.05

Stantec Consulting Ltd.
905 Waverley Street, Winnipeg, Manitoba
Tel 204-489-5900 Fax 204-453-9012

ENGINEER'S SEAL
ORIGINAL SEALED BY
C.L. DYCK
P. ENG.
06/23/05

CONSULTANT DRAWING NO.
CW-56-614

THE CITY OF WINNIPEG
WATER AND WASTE DEPARTMENT
ENGINEERING DIVISION

2005 WATERMAIN RENEWALS
VERMILLION ROAD
WEST LEG OF LAKE PARK DRIVE TO 50m EAST OF BONAVISTA PLACE
STA. 1+00 TO STA. 2+00

SHEET **11** OF **15**
CAD FILE DRAWING NUMBER
1120860-C106.DWG
CITY DRAWING NUMBER
D-8789