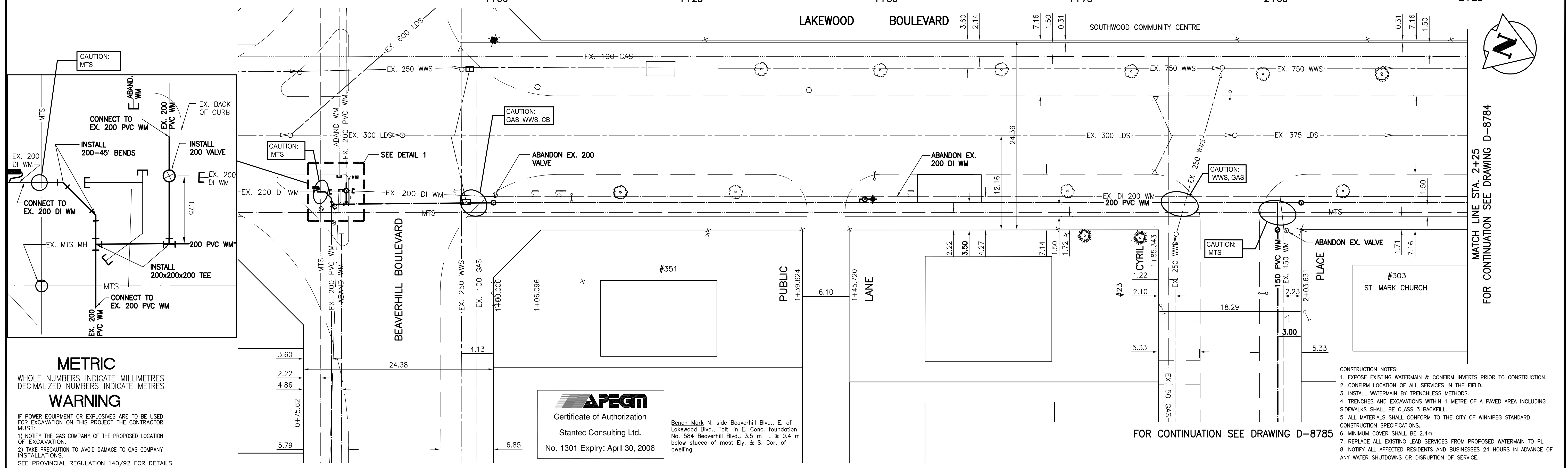


| ADDRESS AND SERVICE | SIZE (mm) & TYPE (STREET) | STOP COCK SHORT & LONG MEASUREMENT (m) | CORPORATION LOCATION |
|-------------------------------|---------------------------|--|----------------------|
| 351 LAKEWOOD BLVD RESIDENTIAL | 25 COPPER | 1.60 RLHL 8.10 EEL OF LAKEWOOD | N/A |
| 23 CRYL PLACE RESIDENTIAL | 19 COPPER | 6.28 LRHL 9.67 EEL OF LAKEWOOD | N/A |
| 303 LAKEWOOD BLVD RESIDENTIAL | 19 COPPER | 5.03 N SE CORN. 10.52 EEL OF LAKEWOOD | N/A |



METRIC
WHOLE NUMBERS INDICATE MILLIMETRES
DECIMALIZED NUMBERS INDICATE METRES

WARNING
IF POWER EQUIPMENT OR EXPLOSIVES ARE TO BE USED FOR EXCAVATION ON THIS PROJECT THE CONTRACTOR MUST:
1) NOTIFY THE GAS COMPANY OF THE PROPOSED LOCATION OF EXCAVATION.
2) TAKE PRECAUTION TO AVOID DAMAGE TO GAS COMPANY INSTALLATIONS.
SEE PROVINCIAL REGULATION 140/92 FOR DETAILS

APEGM
Certificate of Authorization
Stantec Consulting Ltd.
No. 1301 Expiry: April 30, 2006

- CONSTRUCTION NOTES:**
1. EXPOSE EXISTING WATERMAIN & CONFIRM INVERTS PRIOR TO CONSTRUCTION.
 2. CONFIRM LOCATION OF ALL SERVICES IN THE FIELD.
 3. INSTALL WATERMAIN BY TRENCHLESS METHODS.
 4. TRENCHES AND EXCAVATIONS WITHIN 1 METRE OF A PAVED AREA INCLUDING SIDEWALKS SHALL BE CLASS 3 BACKFILL.
 5. ALL MATERIALS SHALL CONFORM TO THE CITY OF WINNIPEG STANDARD CONSTRUCTION SPECIFICATIONS.
 6. MINIMUM COVER SHALL BE 2.4m.
 7. REPLACE ALL EXISTING LEAD SERVICES FROM PROPOSED WATERMAIN TO PL.
 8. NOTIFY ALL AFFECTED RESIDENTS AND BUSINESSES 24 HOURS IN ADVANCE OF ANY WATER SHUTDOWNS OR DISRUPTION OF SERVICE.

| 150 WM | WATERMAIN | 150 WM | HYDRO | 150 WM | WATERMAIN | 150 WM |
|--------|---------------------|--------|----------------|--------|----------------------|--------|
| + | HYDRANT | + | M.T.S. | + | HYDRANT, VALVE | + |
| ○ | VALVE | ○ | CONCRETE | ○ | LAND DRAINAGE SEWER | ○ |
| ○ | LAND DRAINAGE SEWER | ○ | ASPHALT | ○ | WASTE WATER SEWER | ○ |
| ○ | WASTE WATER SEWER | ○ | SIDEWALK | ○ | EX. GROUND PROFILE | ○ |
| ○ | MANHOLE | ○ | PROPERTY LINE | ○ | NORTH OR WEST GUTTER | ○ |
| ○ | CATCH BASIN | ○ | SURVEY BAR | ○ | SOUTH OR EAST GUTTER | ○ |
| ○ | CURB INLET | ○ | DITCH | ○ | NORTH OR WEST IP | ○ |
| ○ | JUNCTIONS | ○ | ELEVATION | ○ | SOUTH OR EAST IP | ○ |
| ○ | SIGN | ○ | CURB STOP | ○ | NORTH OR WEST DITCH | ○ |
| ○ | GAS | ○ | ANODE | ○ | SOUTH OR EAST DITCH | ○ |
| ○ | EXISTING | ○ | LEGEND-PLAN | ○ | EXISTING | ○ |
| ○ | PROPOSED | ○ | LEGEND-PROFILE | ○ | PROPOSED | ○ |

LOCATION APPROVED UNDERGROUND STRUCTURES

| SUPV. U/G STRUCTURES COMMITTEE | DATE |
|--------------------------------|------|
| | |

NOTE:
LOCATION OF UNDERGROUND STRUCTURES AS SHOWN ARE BASED ON THE BEST INFORMATION AVAILABLE BUT NO GUARANTEE IS GIVEN THAT THE GIVEN LOCATIONS ARE EXACT. CONFIRMATION OF EXISTENCE AND EXACT LOCATION OF ALL SERVICES MUST BE OBTAINED FROM THE INDIVIDUAL UTILITIES BEFORE PROCEEDING WITH CONSTRUCTION.

B.M. ELEV. 55-018
232.481m

| NO. | REVISIONS | DATE | BY |
|-----|-------------------|----------|--------|
| 1. | ISSUED FOR TENDER | 05.06.23 | C.L.D. |

Stantec Consulting Ltd.
905 Waverley Street, Winnipeg, Manitoba
Tel 204-489-5900 Fax 204-453-9012

| | |
|----------------------|--|
| DESIGNED BY J.H. | CHECKED BY C.L.D./W.B. |
| DRAWN BY K.R. | APPROVED BY C.L.D. |
| HOR. SCALE: 1:250 | RELEASED FOR CONSTRUCTION: K. ZUREK P. ENG. |
| VERTICAL: 1:50 | DATE 06.23.05 |

DATE MAY, 2005

ENGINEER'S SEAL

ORIGINAL SEALED BY
C.L. DYCK
P. ENG.
06/23/05

CONSULTANT DRAWING NO.
CW-50-614

THE CITY OF WINNIPEG
WATER AND WASTE DEPARTMENT
ENGINEERING DIVISION

2005 WATERMAIN RENEWALS
LAKEWOOD BOULEVARD
BEAVERHILL BOULEVARD TO TAMARAC BAY
STA. 1+00 TO STA. 2+25

SHEET 4 OF 15
CAD FILE DRAWING NUMBER
11208260-C103.dwg
CITY DRAWING NUMBER
D-8783