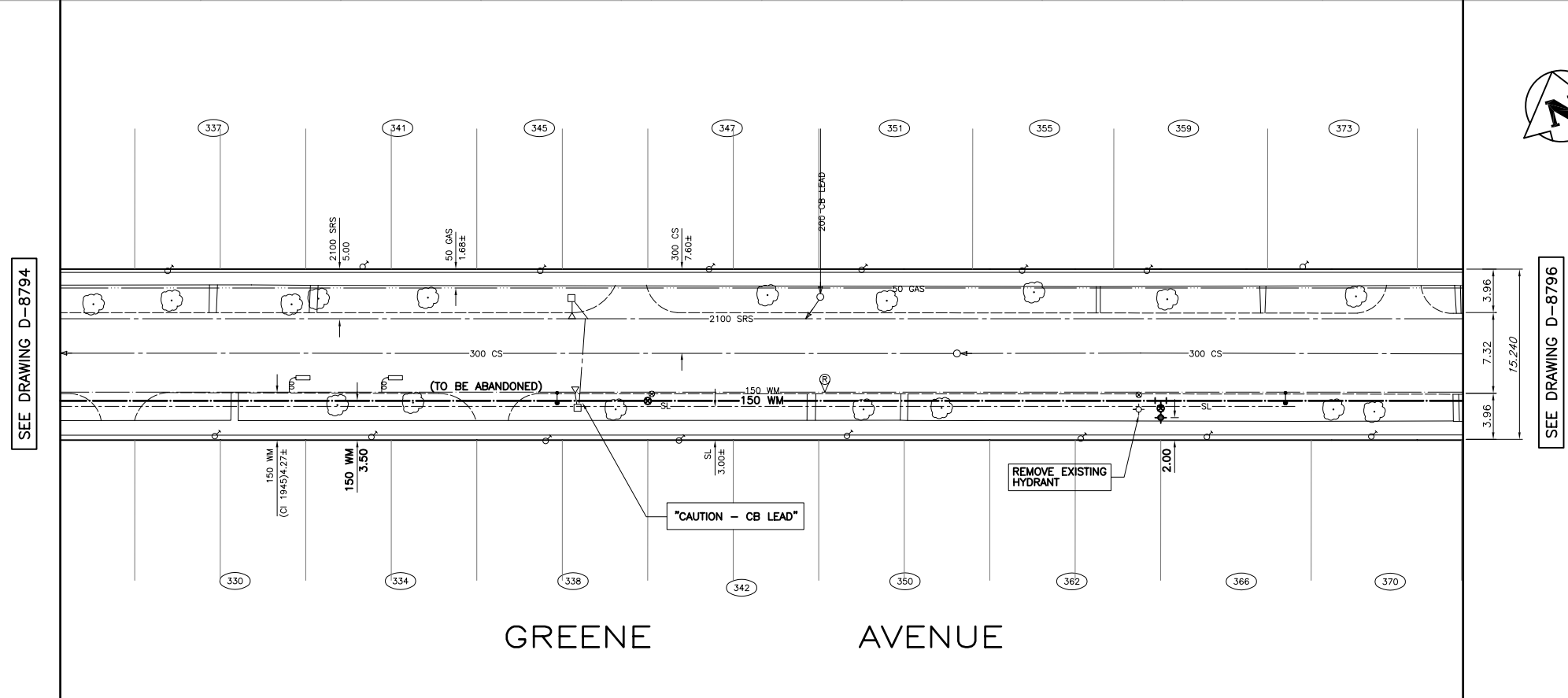


HOUSE No.	SIZE & TYPE	DISTANCE TO PL.	STOP COCK LOCATION		CORPORATION COCK LOC.	COMMENTS
			SHORT	LONG		
330	13 COP	UNK	4.3 E OF WHL	UNKNOWN	15.1 E OF HYD	
334	13 COP	UNK	3.8 E OF WHL	UNKNOWN	28.8 E OF HYD	
337	20 COP	0.3	0.8 W OF WHL	7.6 OUT	COP SC	
338	13 COP	UNK	3.4 E OF WHL	UNKNOWN	43.7 E OF HYD	
341	UNK	UNK	3.7 E OF WHL	UNKNOWN	26.8 E OF HYD	
342	13 COP	UNK	1.8 W OF W COR HSE	UNKNOWN	40.8 W OF HYD	
345	20 COP	UNK	3.7 W OF EHL	UNKNOWN	43.4 E OF HYD	
347	20 COP	UNK	4.8 E OF WHL	UNKNOWN	156.7 E OF VALVE	
350	20 COP	UNK	0.8 E OF WHL	UNKNOWN	28.2 W OF E HYD	
351	20 COP	UNK	2.7 E OF WHL	UNKNOWN	24.4 W OF HYD	
355	20 COP	0.3	2.4 E OF W COR HSE	UNKNOWN	11.3 W OF HYD	
359	20 COP	0.3	1.6 E OF W COR HSE	UNKNOWN	1.8 E OF HYD	
362	20 COP	8.5 BLDG	5.2 W OF EL. OF HSE	7.2 W OF E PL. No. 362	0.3 E OF SC	
366	20 COP	UNK	2.7 E OF WHL	UNKNOWN	5.3 E OF HYD	
370	20 COP	0.3	4.4 E OF W COR HSE	UNKNOWN	21.5 E OF HYD	
373	20 COP	UNK	1.1 E OF WHL	UNKNOWN	11.2 E OF HYD	



- GENERAL NOTES:**
- CHAINAGE IS ALONG SOUTH PROPERTY LINE OF GREENE AVENUE.
- CONSTRUCTION NOTES:**
- EXPOSE EXISTING WATERMAIN AT TIE-IN LOCATIONS AND CONFIRM INVERT PRIOR TO CONSTRUCTION.
 - INSTALL WATERMAIN BY TRENCHLESS METHODS.
 - ALL MATERIALS SHALL CONFORM TO THE CITY OF WINNIPEG STANDARD CONSTRUCTION SPECIFICATIONS.
 - MINIMUM COVER TO TOP OF WATERMAIN SHALL BE 2.4m.
 - NOTIFY ALL AFFECTED RESIDENTS AND BUSINESSES 24 HOURS IN ADVANCE OF ANY WATER SHUTDOWNS OR DISRUPTION OF SERVICE.



150 WM	WATERMAIN	150 WM	←	BEND	↙	ANCHOR TREE	
400 FM	FEEDERMAIN	400 FM	↖	TEE	⊥	LEGAL DIMENSION	
300 LDS	LAND DRAINAGE SEWER	300 LDS	♂	CURB STOP	15.240	SURVEY BAR	
250 WWS	WASTEWATER SEWER	250 WWS)	PLUG	⊕	TRAFFIC SIGNAL	
300 CS	COMBINED SEWER	300 CS	○	MANHOLE	⊙	GAS	
200 FCM	FORCEMAIN	200 FCM	□	CATCHBASIN	■	HYDRO	
⊕	JUNCTIONS	↔	▽	CURB INLET	▼	MTS	
⊕	HYDRANT	⊕	⊕	ADDRESS	⊕	SIDEWALK	
⊕	VALVE	⊕	⊕	HYDRO POLE	⊕	CURB	
⊕	REDUCER	⊕	⊕	LIGHT STANDARD	⊕		
EXISTING	LEGEND-PLAN	PROPOSED	EXISTING	LEGEND-PLAN	PROPOSED	EXISTING	LEGEND-PLAN

LOCATION APPROVED UNDERGROUND STRUCTURES

SUPV. U/G STRUCTURES DATE COMMITTEE

NOTE: LOCATION OF UNDERGROUND STRUCTURES AS SHOWN ARE BASED ON THE BEST INFORMATION AVAILABLE. BUT NO GUARANTEE IS GIVEN THAT ALL EXISTING UTILITIES ARE SHOWN OR THAT THE GIVEN LOCATIONS ARE EXACT. CONFIRMATION OF EXISTENCE AND EXACT LOCATION OF ALL SERVICES MUST BE OBTAINED FROM THE INDIVIDUAL UTILITIES BEFORE PROCEEDING WITH CONSTRUCTION.

B.M. CITY OF WINNIPEG 12-057
ELEV. 230.475m

F.B. 2091

DESIGNED BY GWC
DRAWN BY GMD

CHECKED BY
APPROVED BY

HOR. SCALE: 1 : 250
VERTICAL: 1 : 50

ISSUED FOR TENDER 05.07.04 HAK
ISSUED FOR APPROVAL 05.06.29 HAK

NO. REVISIONS DATE BY

WARDROP Engineering Inc.

ORIGINAL DRAWING REVISION * SEALED BY H.A.K. KATZ 05.06.30

CONSULTANT DRAWING NO. 0500120400-DWG-C4004

THE CITY OF WINNIPEG
WATER AND WASTE DEPARTMENT

2005 WATERMAIN RENEWALS
CONTRACT No. 9

GREENE AVENUE
100m EAST OF BRAZIER STREET TO
225m EAST OF BRAZIER STREET

CITY DRAWING NUMBER D-8795
SHEET 4 OF 14
C4004