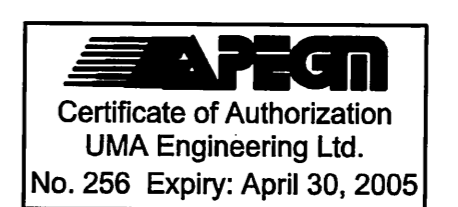
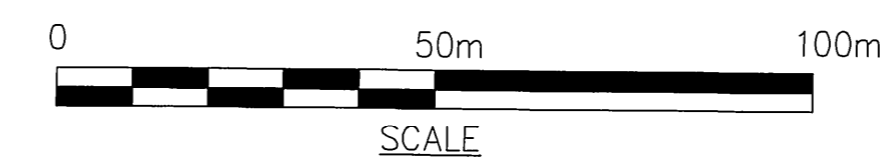


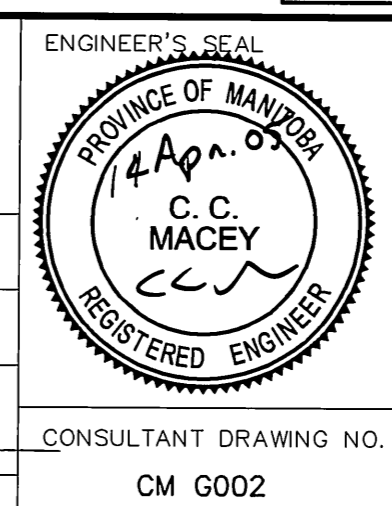
● PILE 136
N 5523873.734
E 647764.206



LEGEND	
	EXISTING FENCE
	PROPOSED FENCE
	PROPOSED HYDRO POLE
	EXISTING HYDRO POLE
	EXISTING CULVERT
	PROPOSED CULVERT
	TEMPORARY BRIDGE
	PROPOSED OFFICE LOCATIONS
	PROPOSED LAYDOWN AREAS
	RESTRICTED ACCESS AREA

B.M. ELEV.	NO.	REVISIONS	DATE	BY
	2	ISSUED FOR BID OP 182 & 167-2005	05/04/12	WJd
	1	PARK. PAD/FENCE REVIEW	05/03/30	WJd
	0	SITE LAYOUT REVISED	05/03/22	WJd

UMA AECOM	
© 2005 UMA ENGINEERING LTD. ALL RIGHTS RESERVED.	
DESIGNED BY <i>WJd</i>	CHECKED BY <i>WR</i>
DRAWN BY <i>WJd</i>	APPROVED BY <i>WR</i>
HOR. SCALE: 1:1000 VERTICAL SCALE:	
RELEASED FOR CONSTRUCTION BY: <i>[Signature]</i>	
DATE: 2005/03/22	DATE: April 26, 05



THE CITY OF WINNIPEG
Winnipeg WATER AND WASTE DEPARTMENT
ENGINEERING DIVISION

WINNIPEG WATER TREATMENT PROGRAM

TEMPORARY GRAVEL PARKING PAD

CITY FILE NUMBER
SHEET 1 OF 1
CITY DRAWING NUMBER