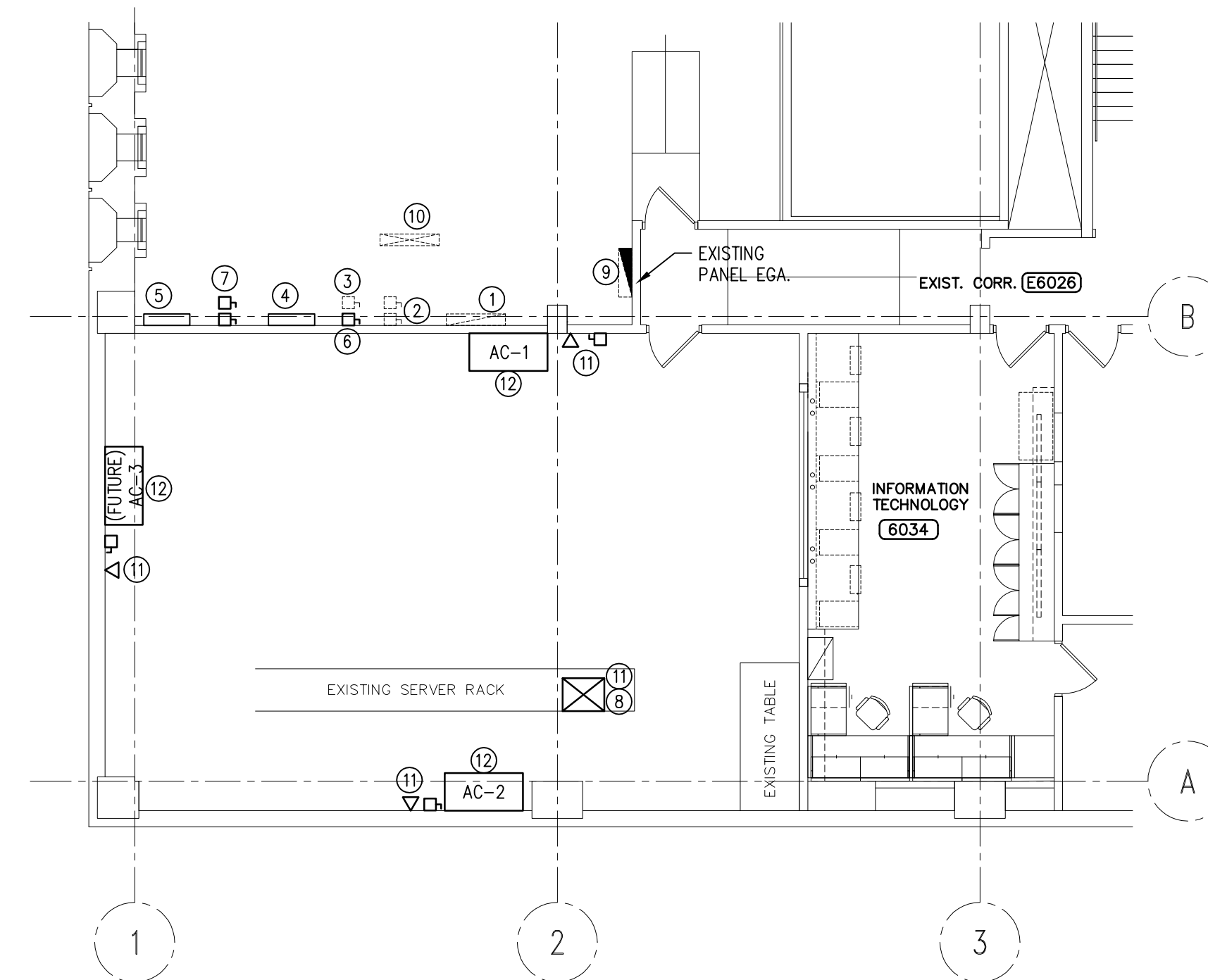
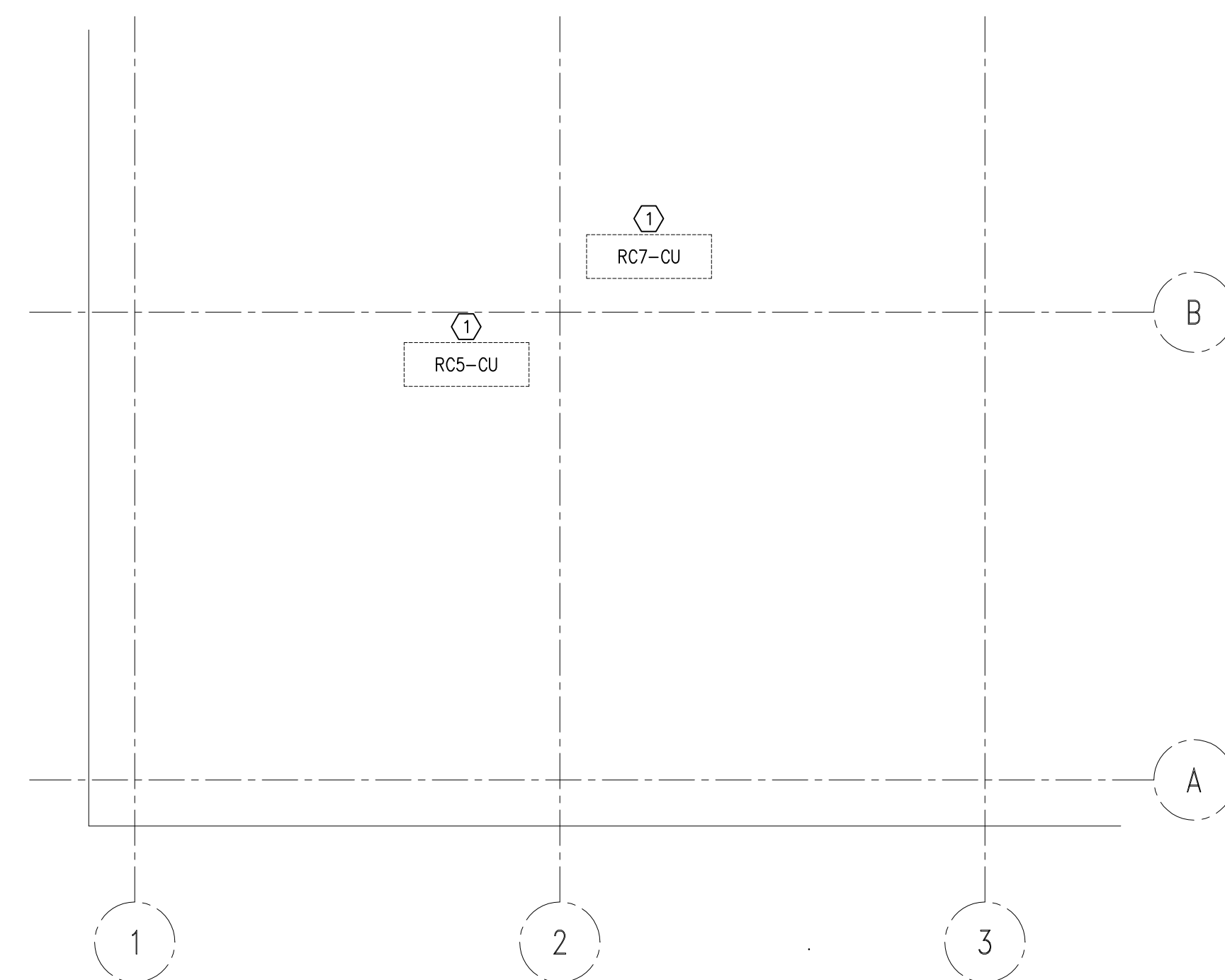


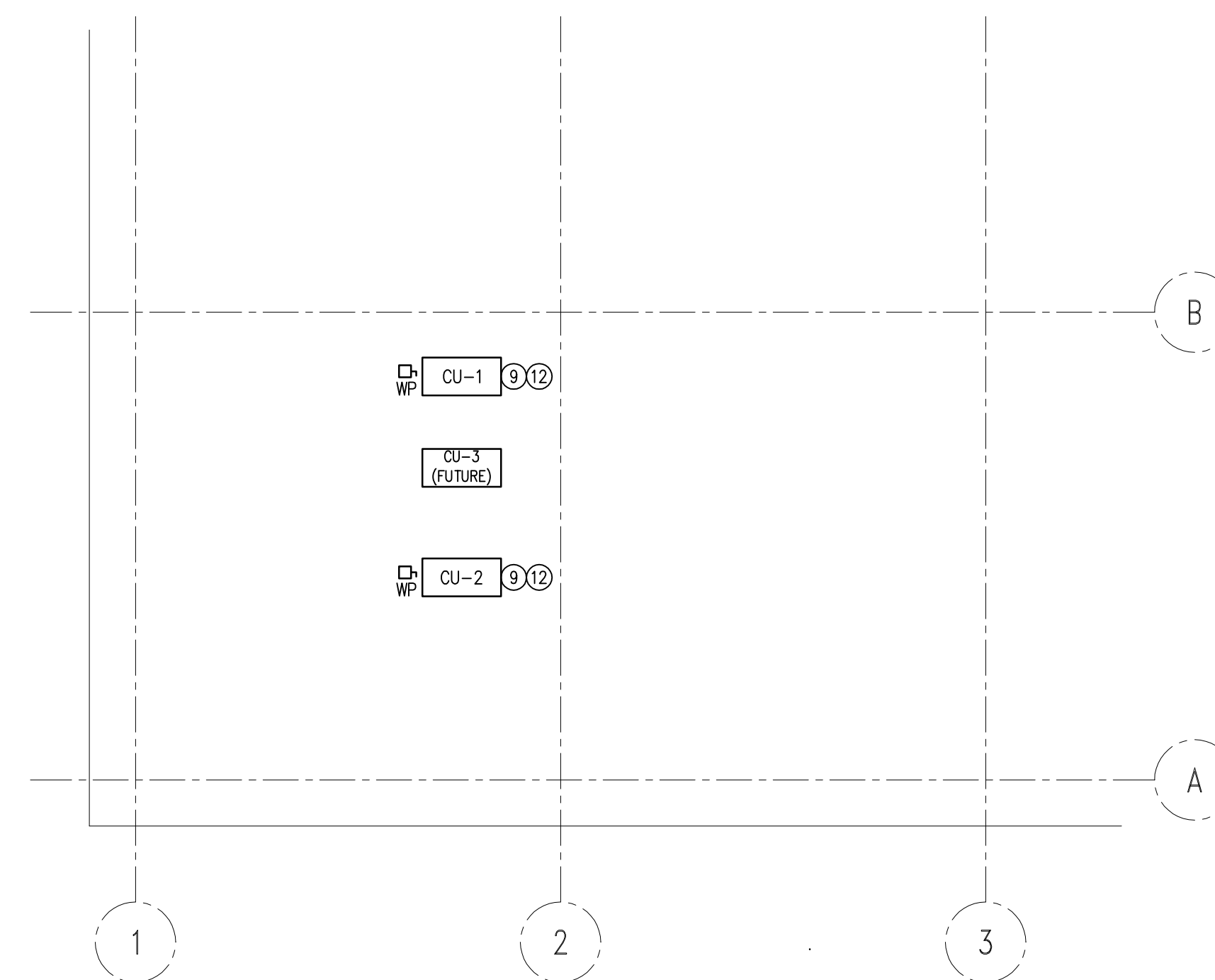
1 PARTIAL SIXTH FLOOR PLAN - DEMO ELECTRICAL  
E-1 SCALE: 1/8"=1'-0"



3 PARTIAL SIXTH FLOOR PLAN - NEW ELECTRICAL  
E-1 SCALE: 1/8"=1'-0"



2 PARTIAL ROOF PLAN - DEMO ELECTRICAL  
E-1 SCALE: 1/8"=1'-0"



4 PARTIAL ROOF PLAN - NEW ELECTRICAL  
E-1 SCALE: 1/8"=1'-0"

EXISTING DRAWING NOTES:

- ① DISCONNECT AND REMOVE WIRING FROM EXISTING AC UNITS RC-5, RC-6 AND RC-7 AND ROOF TOP UNITS RC5-CU, WHERE PROTECTIVE DEVICES (FUSES/BREAKERS) BECOME FREE AS A RESULT OF THIS REMOVAL, RE-LABEL DEVICE AS SPARE.
- ② DISCONNECT AND REMOVE CONTROL WIRING BETWEEN IN ROOM UNITS AND ROOF TOP UNITS.

NEW DRAWING NOTES:

- ① EXISTING 125A/3# 600V SPLITTER TO BE RETAINED TO SUPPLY NEW IN ROOM UNIT (AC-1) AND NEW ROOF TOP UNIT (CU-1) VIA 2 EXISTING FUSED SWITCHES. REMOVE AND REPLACE EXISTING WIRING AS INDICATED ON SINGLE LINE DIAGRAM (E-2).
- ② EXISTING FUSED SWITCHES SUPPLIED FROM EXISTING 125A SPLITTER. REMOVE EXISTING FUSES AND REPLACE AS FOLLOWS:  
-60A FUSED SWITCH TO SUPPLY AC-1 IN ROOM UNIT. REPLACE EXISTING FUSES WITH NEW 35A FUSES.  
-30A FUSED SWITCH TO SUPPLY CU-1 ROOF TOP UNIT. REPLACE EXISTING FUSES WITH NEW 15A FUSES.
- ③ EXISTING FUSED SWITCH SUPPLIED FROM EXISTING 125A SPLITTER. RELOCATE SWITCH TO MAKE WALL SPACE AVAILABLE FOR 2 NEW SPLITTERS AS INDICATED ON THE SINGLE LINE DIAGRAM. RE-USE FUSED SWITCH AND INSTALL NEW CABLE TO SUPPLY AC-2 VIA DISCONNECT. REFER TO SINGLE LINE FOR DETAILS (E-2).
- ④ NEW SPLITTER TO FEED AC-2 AND CU-2.
- ⑤ NEW SPLITTER TO FEED FUTURE AC-3 AND FUTURE CU-3.
- ⑥ NEW FUSED SWITCH TO SUPPLY CU-2. WIRE FROM SWITCH TO DISCONNECT AND ON TO CU-2. REFER TO SINGLE LINE FOR DETAILS (E-2)
- ⑦ NEW FUSED SWITCHES TO SUPPLY FUTURE AC-3 AND CU-3. WIRE TO DISCONNECT ADJACENT TO FUTURE AC-3 LOCATION. WIRING TO CU-3 NOT IN CONTRACT.
- ⑧ PROPOSED AIR CONDITIONING INSTALLATION HUB LOCATION. HUB TO BE SUPPLIED FROM EXISTING POWER STRIP IN EXISTING RACK. HUB TO BE D-LINK DSS-8+. (SUPPLIED BY DIVISION 16).
- ⑨ WIRE FROM PANEL EGA TO CU-1 AND CU-2 USING 2#10 IN CONDUIT FOR LEE TEMP. UNITS. INSTALL 2 NEW 15A 1P BREAKERS TO MATCH EXISTING IN PANEL EGA. WIRING TO FUTURE CU-3 LEE TEMP. NOT IN CONTRACT.
- ⑩ EXISTING AND NEW CABLES PASS THROUGH ROOF SLAB TO ROOF-TOP EQUIPMENT. DIVISION 16 TO SCAN, CORE DRILL, INSTALL CABLING AND SEAL ALL PENETRATIONS. PENETRATIONS TO BE WATER TIGHT. COORDINATE WITH DIVISION 15.
- ⑪ DATA OUTLET MOUNTED LESS THAN 12" FROM AIR CONDITIONING UNIT UNDER FLOOR. CONNECT DATA OUTLETS TO HUB. CONTAIN CAT6 CABLE IN FLEXIBLE CONDUIT. CONDUIT AND CABLE TO BE FT4 RATED.
- ⑫ PROVIDED 3/4" CONDUIT AND WIRE FROM AC-1 AND AC-2 TO CU-1 AND CU-2 FOR CONTROL WIRING. COORDINATE WIRING AND INSTALLATION WITH DIVISION 15.

GENERAL NOTES:

1. COORDINATE SEQUENCE OF WORK WITH DIVISION 15.

1	ISSUED FOR TENDER	CJH	6/21/05
No.	Revisions	By	Date



**SMS ENGINEERING**

SMS Engineering Ltd. Consulting Engineers  
770 Bradford Street Winnipeg MB Canada R3H 0N3  
Telephone 204.775.0291 Fax 204.772.2153  
sms@smseeng.mb.ca

REVIEWED AND APPROVED BY CITY OF WINNIPEG.

Project Title  
**THE CITY OF WINNIPEG  
COMPUTER ROOM COOLING UPGRADE  
151 PRINCESS ST. WINNIPEG, MB**

Drawing Title  
**151 PRINCESS ST.  
SIXTH FLOOR COMPUTER ROOM  
DISTRIBUTION UPGRADE FOR NEW COOLING UNITS**

Drawn By BTS	Checked By CJH	Approved By CJH
Scale AS NOTED	Date JUNE 2005	File No. 04-169-01
Revision Number <b>1</b>	Drawing Number <b>E-1</b>	OF <b>2</b>