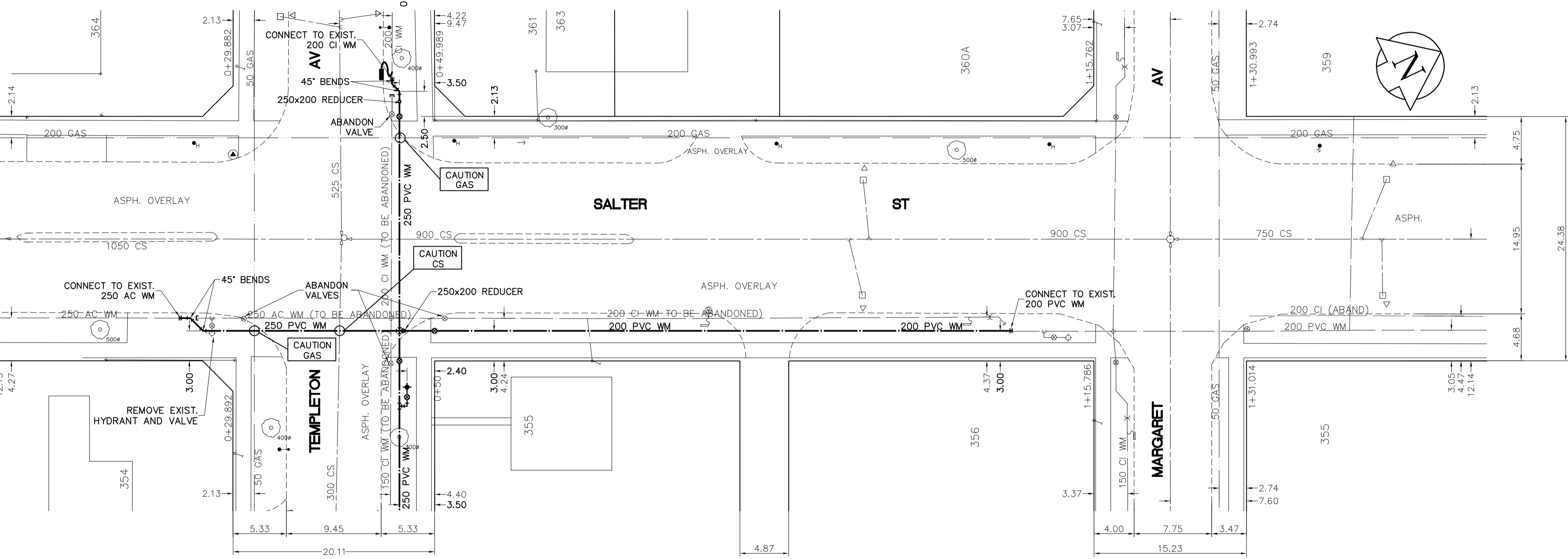
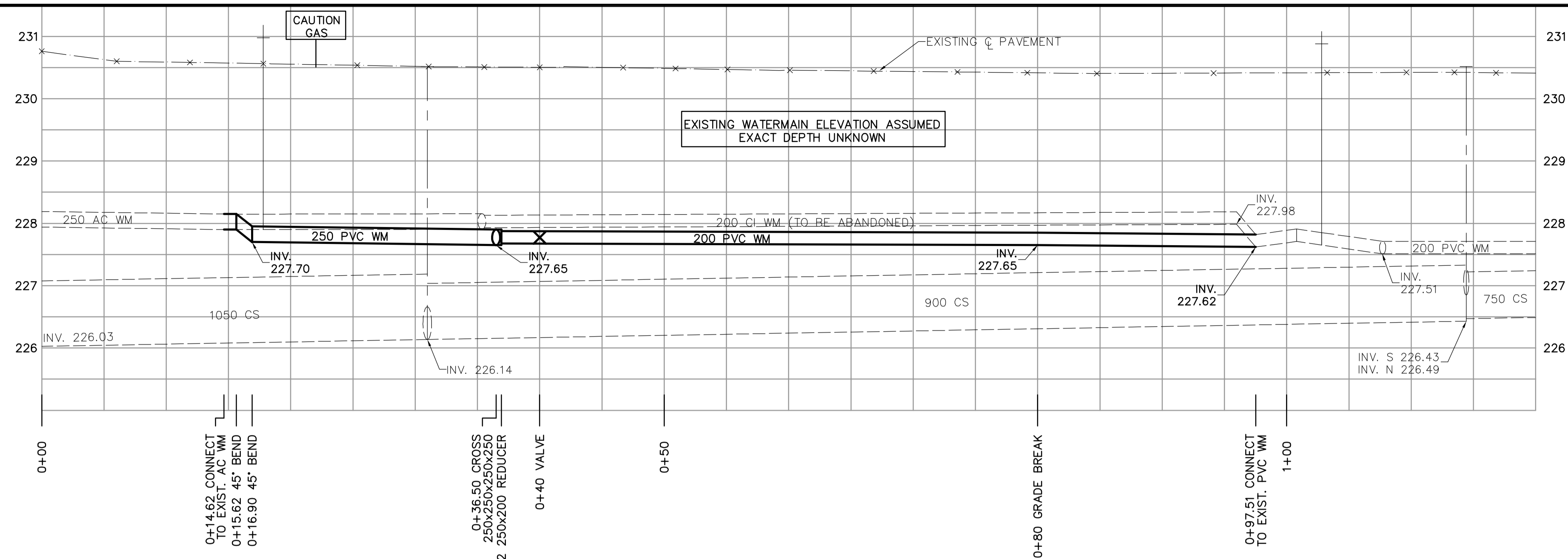


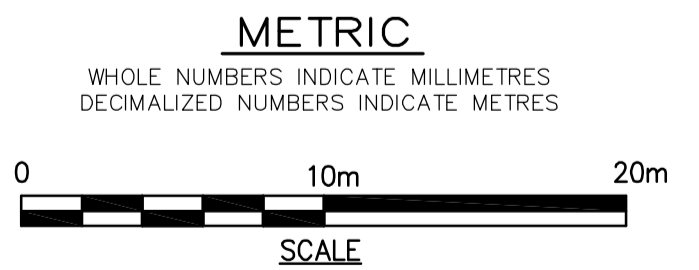
SHEET: GWM-WMG-A1 (11/2002) FILE NAME: L:\vna\88539\026-CAD\WWT\Comp\88539-C15.dwg LAYOUT NAME: 88539-C15 PLOTTED BY: mohamed.inehite Jun 16, 2005 8:52am



- CONSTRUCTION NOTES**
1. EXPOSE WATERMAIN CONNECTIONS AND CONFIRM INVERTS PRIOR TO CONSTRUCTION.
  2. INSTALL WATERMAIN BY TRENCHLESS METHODS.
  3. ALL MATERIALS SHALL CONFORM TO THE CITY OF WINNIPEG STANDARD CONSTRUCTION SPECIFICATIONS.
  4. MINIMUM COVER TO TOP OF PROPOSED WATERMAIN SHALL BE 2.5m FROM STREET CENTERLINE.
  5. INSTALL ALL HYDRANTS WITH FLANGE ELEVATION 50mm - 150mm ABOVE FINISHED GRADE.
  6. REPLACE ALL EXISTING LEAD SERVICES FROM THE PROPOSED WATERMAIN TO PROPERTY LINE.
  7. NOTIFY ALL AFFECTED RESIDENTS AND BUSINESSES 24 HOURS IN ADVANCE OF ANY WATER SHUTDOWN OR DISRUPTION OF SERVICE.
  8. LOCATION OF PREVIOUS WATERMAIN BREAKS SHOWN THUS ⊗ IS APPROXIMATE AND FOR INFORMATION ONLY. NO GUARANTEE IS GIVEN TO THE COMPLETENESS OR ACCURACY OF THIS INFORMATION.
  9. LOCATION OF WATER SERVICES SHOWN ON DRAWINGS ARE APPROXIMATE. THE CONTRACTOR SHALL FIELD LOCATE ALL WATER SERVICES PRIOR TO CONSTRUCTION.
  10. ALL VALVES SHALL BE BLACK TOP (CLOCKWISE TO CLOSE).
  11. BACKFILL UNDER OR WITHIN 1.0m OF PAVEMENTS, INCLUDING SIDEWALKS SHALL BE CLASS 3 BACKFILL EXCEPT AS NOTED. BACKFILL IN BOULEVARDS SHALL BE CLASS 5 BACKFILL.
  12. RENEW ALL LEAD SERVICES TO PROPERTY LINE.

ADDRESS	NATURE OF SERVICE	DISTANCE SC TO PROPERTY	SIZE	MATERIAL	POSITION OF SC (curb stop)	POSITION OF CC (corp)	COMMENTS
363	TEMPLETON AV	RESIDENTIAL	0.0 m	19 mm	COPPER	Long: 5.3 m W of WL Short: 0.9 m W of EL	SALTER Duplex S/C ON PROP 2.5 FT
361	TEMPLETON AV	RESIDENTIAL	0.0 m	19 mm	COPPER	Long: 5.5 m W of WL Short: 0.6 m W of EL	SALTER Duplex S/C ON PROPERTY
365	TEMPLETON AV	RESIDENTIAL	0.0 m	19 mm	COPPER	Long: 9.3 m E of EL Short: 5.5 m E of WL	SALTER House S/C ON PROPERTY
364	TEMPLETON AV	RESIDENTIAL	0.2 m	19 mm	COPPER	Long: 5.2 m W of WL Short: 0.5 m W of EL	SALTER House S/C ON PROPERTY
364	TEMPLETON AV	RESIDENTIAL	0.2 m	19 mm	COPPER	Long: 5.2 m W of WL Short: 0.5 m W of EL	SALTER House S/C ON PROPERTY

**APECA**  
 Certificate of Authorization  
 Earth Tech Canada Inc.  
 No. 730 Expiry: April 30, 2006



EXISTING	LEGEND - PLAN	PROPOSED	EXISTING	LEGEND - PROFILE	PROPOSED
	WATERMAIN			WATERMAIN	
	HYDRANT			HYDRANT	
	VALVE			VALVE	
	LAND DRAINAGE SEWER			LAND DRAINAGE SEWER	
	WASTEWATER SEWER			WASTEWATER SEWER	
	MANHOLE			MANHOLE	
	CATCH BASIN			CATCH BASIN	
	CURB INLET			CURB INLET	
	JUNCTIONS			JUNCTIONS	
	CULVERT			CULVERT	
	GAS			GAS	
	HYDRO TELEPHONE			HYDRO TELEPHONE	
	CONCRETE			CONCRETE	
	ASPHALT			ASPHALT	
	PROPERTY LINE			PROPERTY LINE	
	SURVEY BAR			SURVEY BAR	
	CURB STOP			CURB STOP	
	TREE			TREE	
	ANODE			ANODE	
	CONCRETE SIDEWALK			CONCRETE SIDEWALK	
	FENCE			FENCE	

**LOCATION APPROVED UNDERGROUND STRUCTURES**  
 SUPV. U/G STRUCTURES COMMITTEE DATE \_\_\_\_\_  
 NOTE:  
 LOCATION OF UNDERGROUND STRUCTURES AS SHOWN ARE BASED ON THE BEST INFORMATION AVAILABLE. BUT NO GUARANTEE IS GIVEN THAT ALL EXISTING UTILITIES ARE SHOWN OR THAT THE GIVEN LOCATIONS ARE EXACT. CONFIRMATION OF EXISTENCE AND EXACT LOCATION OF ALL SERVICES MUST BE OBTAINED FROM THE INDIVIDUAL UTILITIES BEFORE PROCEEDING WITH CONSTRUCTION.

NO.	REVISIONS	DATE	BY
0	ISSUED FOR TENDER	05/06/16	GSK
A	ISSUED FOR REVIEW	05/06/13	GSK

**EARTH TECH**  
 A tyco INTERNATIONAL LTD. COMPANY  
 Earth Tech (Canada) Inc. Winnipeg, Manitoba 204-477-5381

DESIGNED BY: GSK	CHECKED BY: KWF
DRAWN BY: MAF	APPROVED BY: K. ZUREK
HOR. SCALE: 1:250	RELEASED FOR CONSTRUCTION BY: K. ZUREK
VERTICAL SCALE: 1:50	DATE: 05/06/16

ENGINEER'S SEAL  
 ORIGINAL SIGNED BY  
**K.W. FITCHETT**  
 JUNE 16/05  
 CONSULTANT DRAWING NO.  
**88539-C15**

**THE CITY OF WINNIPEG**  
 Winnipeg WATER AND WASTE DEPARTMENT

**2005 WATERMAIN RENEWALS CONTRACT 10**

SALTER STREET  
 TEMPLETON AVENUE TO  
 MARGARET AVENUE

SHEET OF  
**15** OF **16**  
 CITY DRAWING NUMBER  
**D-8778**