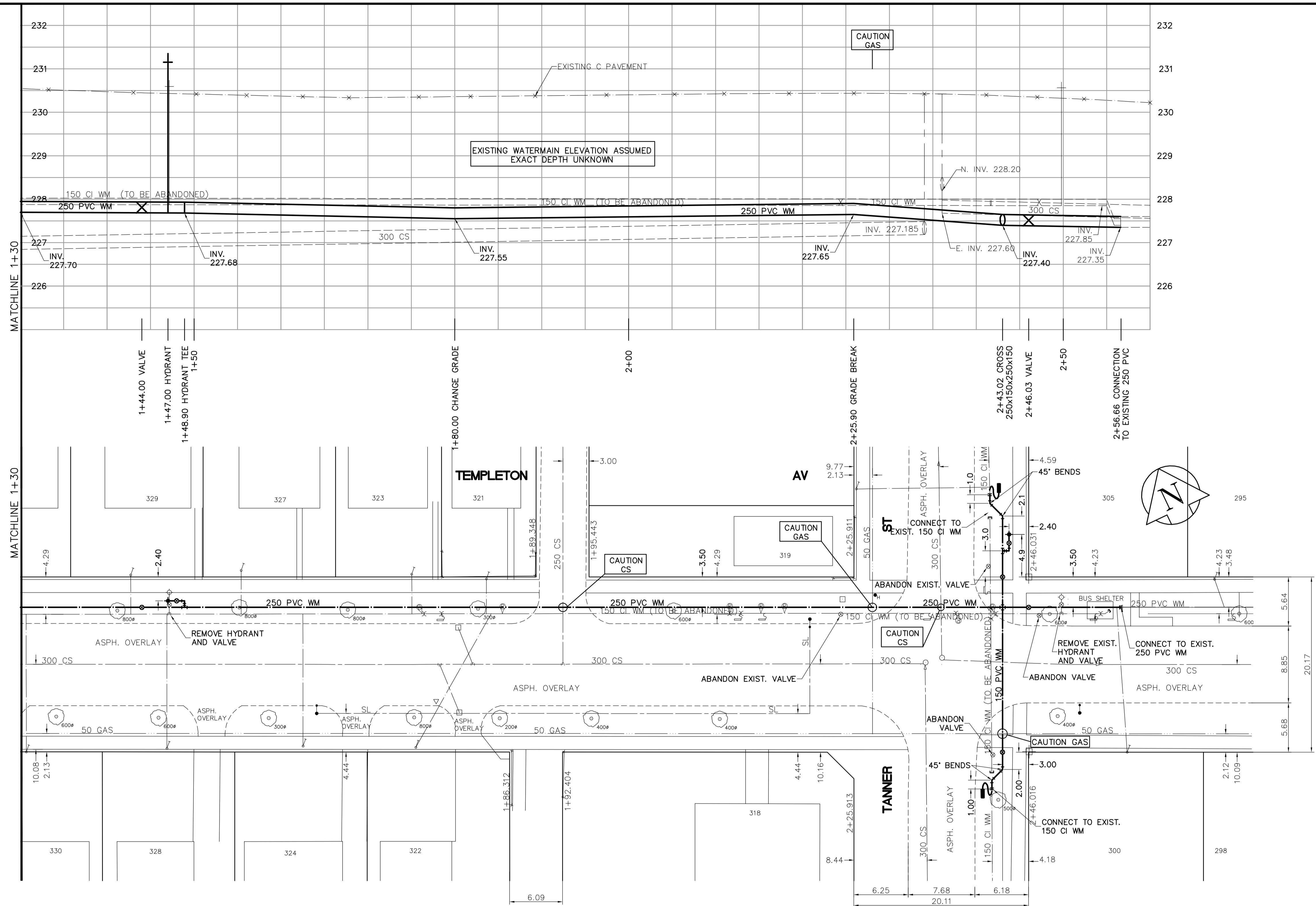


SHEET: GOW-WMG-A1 (11/2002) FILE NAME: L:\Venn\85539\026-CAD\WWT\Comp\85539-C14.dwg PLOTTED BY: mohamed.ikheite LAYOUT NAME: 85539-C14 Jan 16, 2005 - 8:52am



- CONSTRUCTION NOTES**
1. EXPOSE WATERMAIN CONNECTIONS AND CONFIRM INVERTS PRIOR TO CONSTRUCTION.
 2. INSTALL WATERMAIN BY TRENCHLESS METHODS.
 3. ALL MATERIALS SHALL CONFORM TO THE CITY OF WINNIPEG STANDARD CONSTRUCTION SPECIFICATIONS.
 4. MINIMUM COVER TO TOP OF PROPOSED WATERMAIN SHALL BE 2.5m FROM STREET CENTERLINE.
 5. INSTALL ALL HYDRANTS WITH FLANGE ELEVATION 50mm- 150mm ABOVE FINISHED GRADE.
 6. REPLACE ALL EXISTING LEAD SERVICES FROM THE PROPOSED WATERMAIN TO PROPERTY LINE.
 7. NOTIFY ALL AFFECTED RESIDENTS AND BUSINESSES 24 HOURS IN ADVANCE OF ANY WATER SHUTDOWN OR DISRUPTION OF SERVICE.
 8. LOCATION OF PREVIOUS WATERMAIN BREAKS SHOWN THUS (⊗) IS APPROXIMATE AND FOR INFORMATION ONLY. NO GUARANTEE IS GIVEN TO THE COMPLETENESS OR ACCURACY OF THIS INFORMATION.
 9. LOCATION OF WATER SERVICES SHOWN ON DRAWINGS ARE APPROXIMATE. THE CONTRACTOR SHALL FIELD LOCATE ALL WATER SERVICES PRIOR TO CONSTRUCTION.
 10. ALL VALVES SHALL BE BLACK TOP (CLOCKWISE TO CLOSE).
 11. BACKFILL UNDER OR WITHIN 1.0m OF PAVEMENTS, INCLUDING SIDEWALKS SHALL BE CLASS 3 BACKFILL EXCEPT AS NOTED. BACKFILL IN BOULEVARDS SHALL BE CLASS 5 BACKFILL.
 12. RENEW ALL LEAD SERVICES TO PROPERTY LINE.

ADDRESS	NATURE OF SERVICE	DISTANCE SC TO PROPERTY	SIZE	MATERIAL	POSITION OF SC (curb stop)	POSITION OF CC (corp)	COMMENTS:
322	TEMPLETON AV	RESIDENTIAL	0.0 m	19 mm	COPPER	Long: 4.0 m E of WHL Short: 36.6 m E of 1ST HYD E	Long: 2.1 m W of EPL
321	TEMPLETON AV	RESIDENTIAL	0.2 m	19 mm	COPPER	Long: 4.0 m E of WL Short: 4.0 m E of WL	SALTER HOUSE Short: of of
319	TEMPLETON AV	RESIDENTIAL	0.0 m	19 mm	COPPER	Long: 11.0 m N of NL Short: 1.8 m S of NL	TEMPLETON HOUSE Short: of of
318	TEMPLETON AV	RESIDENTIAL	0.2 m	50 mm	COPPER	Long: 9.4 m S of SL Short: 3.2 m S of SL	TEMPLETON BLDG Short: of of
305	TEMPLETON AV	RESIDENTIAL	0.2 m	19 mm	COPPER	Long: 15.1 m N of NL Short: 5.9 m N of SL	TEMPLETON HOUSE Short: of of
300	TEMPLETON AV	RESIDENTIAL	0.0 m	25 mm	COPPER	Long: 11.3 m E of EL Short: 5.5 m W of EL	TEMPLETON HOUSE Short: of of

ADDRESS	NATURE OF SERVICE	DISTANCE SC TO PROPERTY	SIZE	MATERIAL	POSITION OF SC (curb stop)	POSITION OF CC (corp)	COMMENTS:
330	TEMPLETON AV	RESIDENTIAL	0.3 m	19 mm	COPPER	Long: 16.6 m W of 1ST HYD E Short: 0.9 m E of WL	SALTER HOUSE Long: of of
329	TEMPLETON AV	RESIDENTIAL	0.0 m	19 mm	COPPER	Long: 4.3 m W of 1ST HYD E Short: 0.8 m W of WL	SALTER HOUSE Short: of of
328	TEMPLETON AV	RESIDENTIAL	0.0 m	19 mm	COPPER	Long: 0.3 m W of 1ST HYD E Short: 2.7 m W of EL	SALTER HOUSE Short: of of
327	TEMPLETON AV	RESIDENTIAL	0.2 m	19 mm	COPPER	Long: 9.1 m E of 1ST HYD E Short: 0.8 m E of WL	SALTER HOUSE Short: of of
324	TEMPLETON AV	RESIDENTIAL	0.0 m	19 mm	COPPER	Long: 15.5 m E of 1ST HYD E Short: 4.6 m W of EL	SALTER HOUSE Short: of of
323	TEMPLETON AV	RESIDENTIAL	0.6 m	19 mm	COPPER	Long: 27.9 m E of 1ST HYD E Short: 1.8 m W of EL	SALTER HOUSE Short: of of

EXISTING	LEGEND - PLAN	PROPOSED	EXISTING	LEGEND - PLAN	PROPOSED	EXISTING	LEGEND - PROFILE	PROPOSED
150 mm W.M.	WATERMAIN	150 mm W.M.	HYDRO	TELEPHONE	150 mm W.M.	WATERMAIN	HYDRANT	
300mm L.D.S.	LAND DRAINAGE SEWER	300mm L.D.S.	CONCRETE	CONCRETE	300mm L.D.S.	LAND DRAINAGE SEWER	VALVE	
250mm W.W.S.	WASTEWATER SEWER	250mm W.W.S.	ASPHALT	PROPERTY LINE	250mm W.W.S.	WASTE WATER SEWER	Q PROFILE	
MANHOLE	MANHOLE	SURVEY BAR	SURVEY BAR					
CATCH BASIN	CATCH BASIN	CURB STOP	CURB STOP					
CURB INLET	CURB INLET	TREE	TREE					
JUNCTIONS	JUNCTIONS	ANODE	ANODE					
CULVERT	CULVERT	CONCRETE SIDEWALK	CONCRETE SIDEWALK					
GAS	GAS	FENCE	FENCE					

LOCATION APPROVED UNDERGROUND STRUCTURES

SUPV. U/G STRUCTURES COMMITTEE DATE:

NOTE:
LOCATION OF UNDERGROUND STRUCTURES AS SHOWN ARE BASED ON THE BEST INFORMATION AVAILABLE. BUT NO GUARANTEE IS GIVEN THAT ALL EXISTING UTILITIES ARE SHOWN OR THAT THE GIVEN LOCATIONS ARE EXACT. CONFIRMATION OF EXISTENCE AND EXACT LOCATION OF ALL SERVICES MUST BE OBTAINED FROM THE INDIVIDUAL UTILITIES BEFORE PROCEEDING WITH CONSTRUCTION.

NO.	REVISIONS	DATE	BY
0	ISSUED FOR TENDER	05/06/16	GSK
A	ISSUED FOR REVIEW	05/06/13	GSK

EARTH TECH
A tyco INTERNATIONAL LTD. COMPANY
Earth Tech (Canada) Inc. Winnipeg, Manitoba 204-477-5381

DESIGNED BY: GSK
CHECKED BY: KWF

DRAWN BY: MAF
APPROVED BY:

HOR. SCALE: 1:250
VERTICAL SCALE: 1:50

RELEASED FOR CONSTRUCTION BY: K. ZUREK

DATE: 2005/05/12 DATE: 05/06/16

ENGINEER'S SEAL

ORIGINAL SIGNED BY: K.W. FITCHETT
JUNE 16/05

CONSULTANT DRAWING NO. 85539-C14

THE CITY OF WINNIPEG
Winnipeg WATER AND WASTE DEPARTMENT

2005 WATERMAIN RENEWALS CONTRACT 10

TEMPLETON AVENUE STATION 1+30 TO TANNER STREET

SHEET 14 OF 16
CITY DRAWING NUMBER D-8777

WHOLE NUMBERS INDICATE MILLIMETRES
DECIMALIZED NUMBERS INDICATE METRES

0 10m 20m
SCALE

APECA
Certificate of Authorization
Earth Tech Canada Inc.
No. 730 Expiry: April 30, 2004