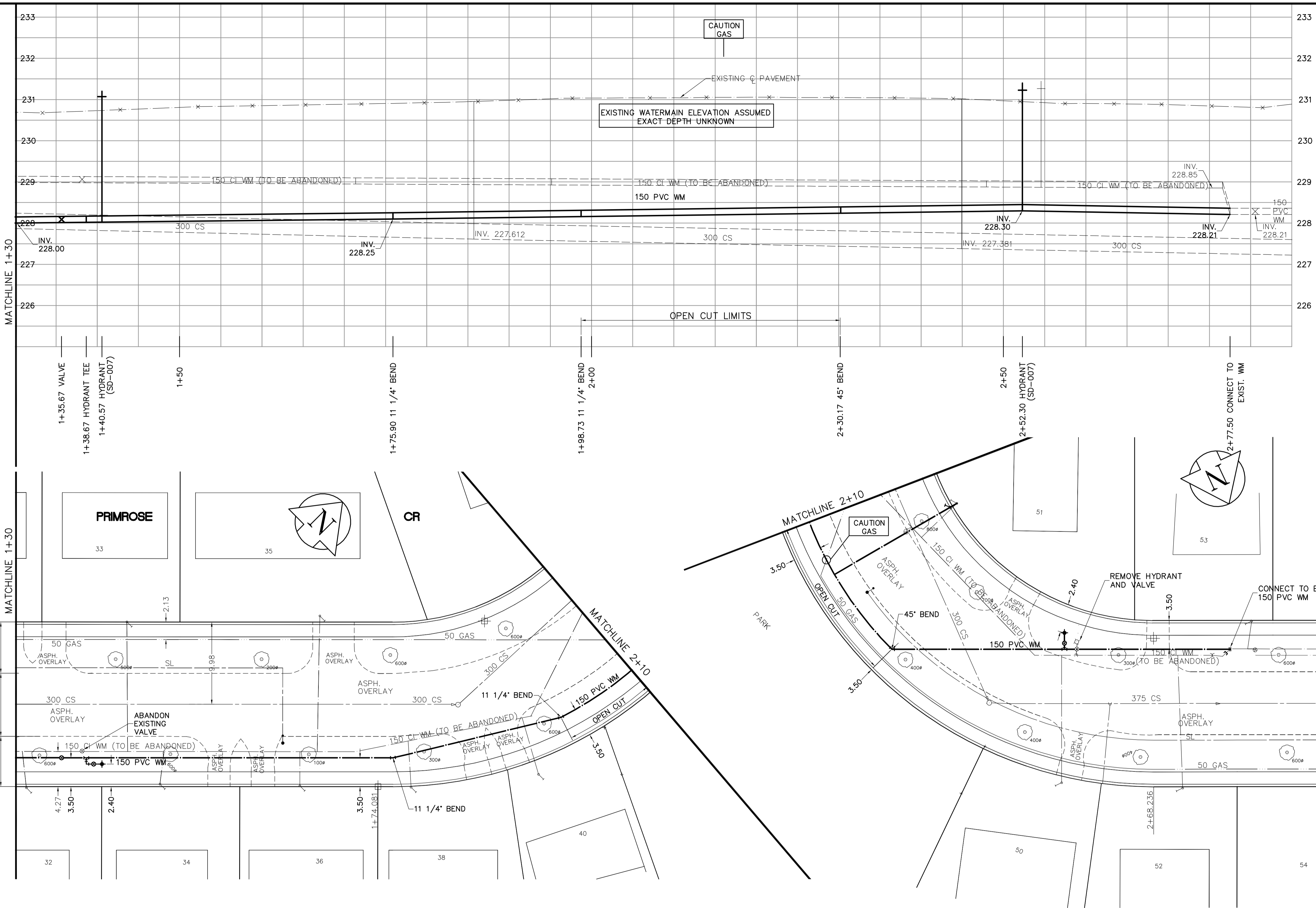


SHEET: COW-WM-A1 (11/2002) FILE NAME: L:\work\85539\026-CAD\WMT\Comp\85539-C10.dwg PLOTTED BY: michael.kopcke DATE: 2005-05-16 8:50am



- CONSTRUCTION NOTES**
1. EXPOSE WATERMAIN CONNECTIONS AND CONFIRM INVERTS PRIOR TO CONSTRUCTION.
 2. INSTALL WATERMAIN BY TRENCHLESS METHODS.
 3. ALL MATERIALS SHALL CONFORM TO THE CITY OF WINNIPEG STANDARD CONSTRUCTION SPECIFICATIONS.
 4. MINIMUM COVER TO TOP OF PROPOSED WATERMAIN SHALL BE 2.5m FROM STREET CENTERLINE.
 5. INSTALL ALL HYDRANTS WITH FLANGE ELEVATION 50mm-150mm ABOVE FINISHED GRADE.
 6. REPLACE ALL EXISTING LEAD SERVICES FROM THE PROPOSED WATERMAIN TO PROPERTY LINE.
 7. NOTIFY ALL AFFECTED RESIDENTS AND BUSINESSES 24 HOURS IN ADVANCE OF ANY WATER SHUTDOWN OR DISRUPTION OF SERVICE.
 8. LOCATION OF PREVIOUS WATERMAIN BREAKS SHOWN THUS Ⓢ IS APPROXIMATE AND FOR INFORMATION ONLY. NO GUARANTEE IS GIVEN TO THE COMPLETENESS OR ACCURACY OF THIS INFORMATION.
 9. LOCATION OF WATER SERVICES SHOWN ON DRAWINGS ARE APPROXIMATE. THE CONTRACTOR SHALL FIELD LOCATE ALL WATER SERVICES PRIOR TO CONSTRUCTION.
 10. ALL VALVES SHALL BE BLACK TOP (CLOCKWISE TO CLOSE).
 11. BACKFILL UNDER OR WITHIN 1.0m OF PAVEMENTS, INCLUDING SIDEWALKS SHALL BE CLASS 3 BACKFILL EXCEPT AS NOTED. BACKFILL IN BOULEVARDS SHALL BE CLASS 5 BACKFILL.
 12. RENEW ALL LEAD SERVICES TO PROPERTY LINE.

ADDRESS	NATURE OF SERVICE	DISTANCE SC TO PROPERTY	SIZE	MATERIAL	POSITION OF SC (curb stop)	POSITION OF CC (corp)	COMMENTS:
55	PRIMROSE CR RESIDENTIAL	0.0 m	19 mm	COPPER	Long: 122.9 m E of EL HOUSE Short: 4.4 m E of WL SINCLAIR	Long: 0.0 m E of S/C	RECONN TO NEW W/M UN ION 1.5FR CO & 2 SEWER REPAIR @W/M RECONN TO NEW W/M UN ION 3.5FR CC
54	PRIMROSE CR RESIDENTIAL	0.1 m	19 mm	COPPER	Long: 124.8 m E of EL HOUSE Short: 1.5 m E of WL SINCLAIR	Long: 0.8 m E of S/C	
52	PRIMROSE CR RESIDENTIAL	0.3 m	19 mm	COPPER	Long: 17.5 m W of 2ND HYD E SINCLAIR Short: 3.3 m W of WL HOUSE	Long: 0.6 m E of S/C	
51	PRIMROSE CR RESIDENTIAL	0.0 m	19 mm	COPPER	Long: 9.8 m N of SL HOUSE Short: 2.7 m W of 2ND HYD E SINCLAIR	Long: 0.1 m N of S/C	RENEW TO PL
50	PRIMROSE CR RESIDENTIAL	1.1 m	19 mm	COPPER	Long: 3.0 m E of WL HOUSE Short: 106.8 m N of HYDT N PRIMROSE	Long: 0.1 m N of S/C	
40	PRIMROSE CR RESIDENTIAL	1.7 m	19 mm	COPPER	Long: 3.9 m N of SL HOUSE Short: 0.6 m S of S/C	Long: 0.6 m S of S/C	

ADDRESS	NATURE OF SERVICE	DISTANCE SC TO PROPERTY	SIZE	MATERIAL	POSITION OF SC (curb stop)	POSITION OF CC (corp)	COMMENTS:
38	PRIMROSE CR RESIDENTIAL	0.2 m	19 mm	COPPER	Long: 90.1 m N of HYDT N PRIMROSE Short: 3.0 m N of SL HOUSE	Long: 0.9 m N of S/C	
36	PRIMROSE CR RESIDENTIAL	0.0 m	19 mm	COPPER	Long: 78.5 m N of HYDT N PRIMROSE Short: 2.9 m N of SL HOUSE	Long: 0.9 m N of S/C	
35	PRIMROSE CR RESIDENTIAL	0.6 m	19 mm	COPPER	Long: 78.9 m N of TST HYD N PRIMROSE Short: 5.1 m S of NL HOUSE	Long: 0.3 m S of S/C	
34	PRIMROSE CR RESIDENTIAL	0.2 m	19 mm	COPPER	Long: 59.4 m N of HYDT N PRIMROSE Short: 5.4 m N of SL HOUSE	Long: 0.5 m N of S/C	
33	PRIMROSE CR RESIDENTIAL	0.2 m	19 mm	COPPER	Long: 56.3 m N of TST HYD N PRIMROSE Short: 5.7 m S of NL HOUSE	Long: 0.1 m N of S/C	
32	PRIMROSE CR RESIDENTIAL	0.2 m	19 mm	COPPER	Long: 43.0 m N of HYDT N PRIMROSE Short: 0.2 m N of SL HOUSE	Long: 0.5 m S of S/C	

EXISTING	LEGEND - PLAN	PROPOSED	EXISTING	LEGEND - PROFILE	PROPOSED
150 mm W.M.	WATERMAIN	150 mm W.M.	150 mm W.M.	WATERMAIN	150 mm W.M.
Hydrant symbol	HYDRANT	Valve symbol	Valve symbol	HYDRANT	VALVE
Manhole symbol	MANHOLE	Survey bar symbol	Survey bar symbol	SURVEY BAR	
Catch basin symbol	CATCH BASIN	Tree symbol	Tree symbol	TREE	
Curb inlet symbol	CURB INLET	Node symbol	Node symbol	ANODE	
Conjunction symbol	JUNCTIONS	Concrete sidewalk symbol	Concrete sidewalk symbol	CONCRETE SIDEWALK	
Culvert symbol	CULVERT	Fence symbol	Fence symbol	FENCE	
Gas symbol	GAS				

LOCATION APPROVED UNDERGROUND STRUCTURES

SUPV. U/G STRUCTURES COMMITTEE DATE

NOTE:
LOCATION OF UNDERGROUND STRUCTURES AS SHOWN ARE BASED ON THE BEST INFORMATION AVAILABLE. BUT NO GUARANTEE IS GIVEN THAT ALL EXISTING UTILITIES ARE SHOWN OR THAT THE GIVEN LOCATIONS ARE EXACT. CONFIRMATION OF EXISTENCE AND EXACT LOCATION OF ALL SERVICES MUST BE OBTAINED FROM THE INDIVIDUAL UTILITIES BEFORE PROCEEDING WITH CONSTRUCTION.

NO.	REVISIONS	DATE	BY
0	ISSUED FOR TENDER	05/06/16	GSK
A	ISSUED FOR REVIEW	05/06/13	GSK

EARTH TECH
A tyco INTERNATIONAL LTD. COMPANY
Earth Tech (Canada) Inc. Winnipeg, Manitoba 204-477-5381

DESIGNED BY: GSK
CHECKED BY: KWF

DRAWN BY: MAF
APPROVED BY:

HOR. SCALE: 1:250
VERTICAL SCALE: 1:50

RELEASED FOR CONSTRUCTION BY: K. ZUREK
DATE: 05/06/16

ENGINEER'S SEAL
ORIGINAL SIGNED BY: K.W. FITCHETT
JUNE 16/05

CONSULTANT DRAWING NO. 85539-C10

APECM
Certificate of Authorization
Earth Tech Canada Inc.
No. 730 Expiry: April 30, 2006

METRIC
WHOLE NUMBERS INDICATE MILLIMETRES
DECIMALIZED NUMBERS INDICATE METRES

0 10m 20m
SCALE

THE CITY OF WINNIPEG
Winnipeg WATER AND WASTE DEPARTMENT

2005 WATERMAIN RENEWALS CONTRACT 10

PRIMROSE CRESCENT STATION 1+30 TO 139.27M WEST OF SINCLAIR STREET

SHEET 10 OF 16
CITY DRAWING NUMBER D-8773