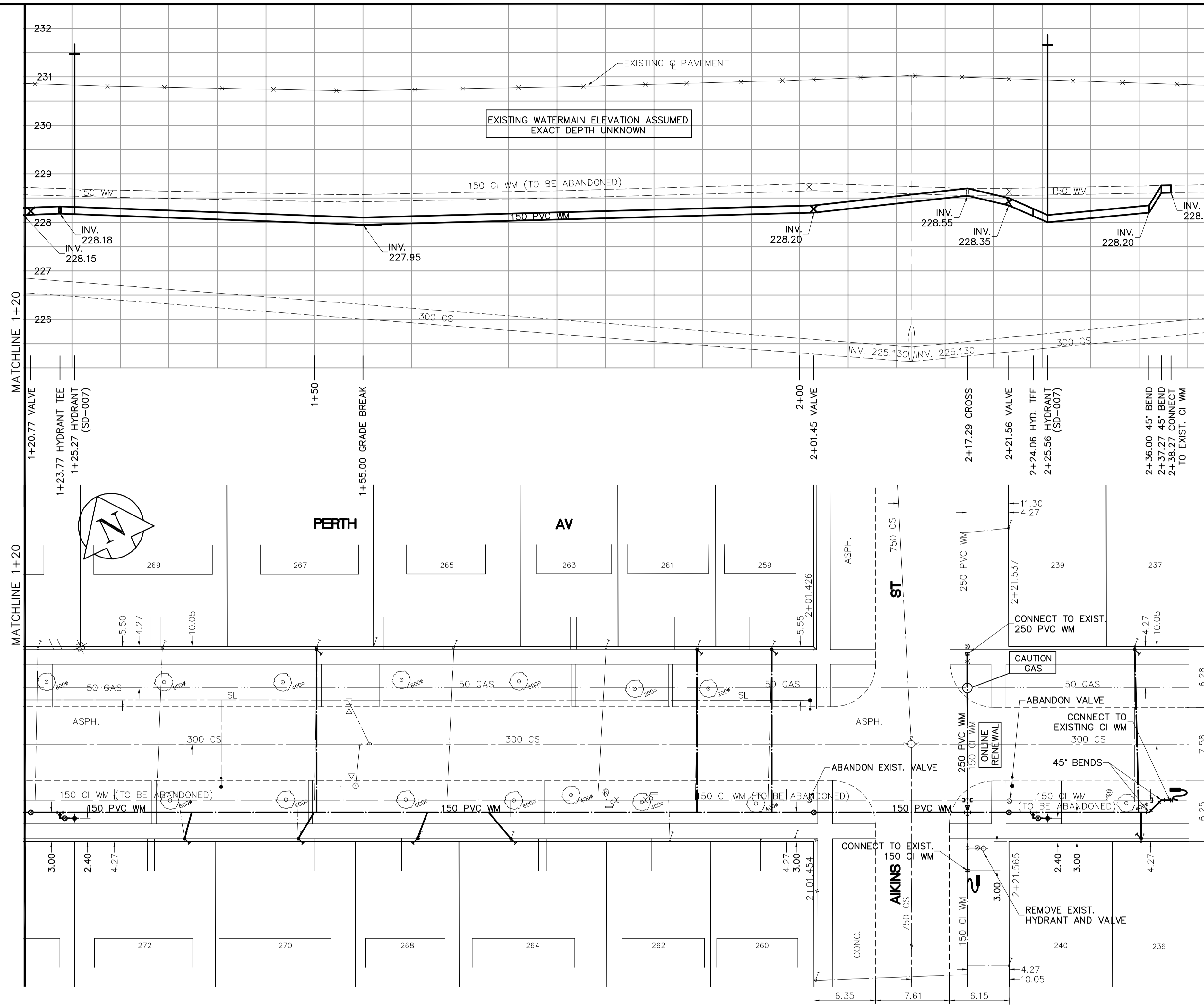


SHEET: COW-WM-A1 (11/2002)  
 FILE NAME: L:\work\85539\026-CAD\WMT\Conn\85539-C08.dwg  
 PLOTTED BY: michael.kocinski  
 LAYOUT NAME: 85539-C08  
 Jan 16, 2005 - 8:49am

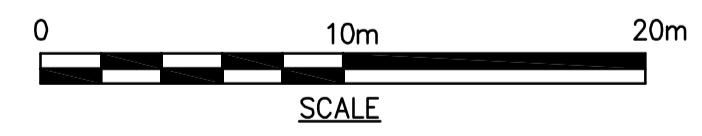


ADDRESS	NATURE OF SERVICE	DISTANCE SC TO PROPERTY	SIZE	MATERIAL	POSITION OF SC (curb stop)	POSITION OF CC (corp)	COMMENTS
272	PERTH AV RESIDENTIAL	0.2 m	19 mm	LEAD	Long: 23.0 m E of EL HOUSE Short: 0.4 m W of EL	1ST HYD W AIKINS Long: 0.3 m W of S/C	RENEW TO PL
270	PERTH AV RESIDENTIAL	0.2 m	19 mm	LEAD	Long: 34.6 m E of EL HOUSE Short: 3.3 m W of EL	1ST HYD W AIKINS Long: 0.3 m E of S/C	RENEW TO PL
269	PERTH AV RESIDENTIAL	0.0 m	19 mm	COPPER	Long: 20.4 m E of EL HOUSE Short: 5.2 m W of EL	1ST HYD W AIKINS Long: SAME AS of S/C	
268	PERTH AV RESIDENTIAL	0.2 m	19 mm	LEAD	Long: 47.2 m E of EL HOUSE Short: 2.5 m W of EL	1ST HYD W AIKINS Long: SAME AS of S/C	RENEW TO PL
267	PERTH AV RESIDENTIAL	0.2 m	19 mm	LEAD	Long: 36.7 m E of EL HOUSE Short: 4.0 m W of EL	1ST HYD W AIKINS Long: SAME AS of S/C	RENEW TO PL
265	PERTH AV RESIDENTIAL	0.3 m	19 mm	COPPER	Long: 37.5 m W of WL AIKINS Long: 0.3 m W of S/C		
264	PERTH AV RESIDENTIAL	0.2 m	19 mm	LEAD	Long: 47.2 m E of EL HOUSE Short: 4.1 m W of WL	1ST HYD W AIKINS Long: SAME AS of S/C	RENEW TO PL
263	PERTH AV RESIDENTIAL	0.3 m	19 mm	COPPER	Long: 21.9 m W of WL AIKINS Long: 0.3 m W of S/C		
262	PERTH AV RESIDENTIAL	0.2 m	19 mm	COPPER	Long: 14.9 m W of WL AIKINS Long: SAME AS of S/C		
261	PERTH AV RESIDENTIAL	0.2 m	19 mm	LEAD	Long: 12.2 m W of WL AIKINS Long: SAME AS of S/C		S/C IS ON WL AIKINS
260	PERTH AV RESIDENTIAL	0.0 m	19 mm	LEAD	Long: 13.3 m S of NL HOUSE Short: 5.3 m S of NL	HOUSE Short: 0.6 m N of S/C	
259	PERTH AV RESIDENTIAL	0.2 m	19 mm	LEAD	Long: 4.4 m W of WL AIKINS Long: 2.6 m W of EL	HOUSE Short: 0.3 m W of S/C	RENEW TO PL
240	PERTH AV RESIDENTIAL	1.2 m	19 mm	LEAD	Long: 4.0 m S of NL HOUSE Short: 4.0 m S of NL	HOUSE Short: SAME AS of S/C	
239	PERTH AV RESIDENTIAL	0.0 m	13 mm	LEAD	Long: 12.2 m N of NL PERTH Long: 0.5 m S of S/C		SERV OFF AIKINS CONN NEW WM AUG/22/86
237	PERTH AV RESIDENTIAL	0.5 m	16 mm	LEAD	Long: 4.7 m E of WL HOUSE Short: 1.3 m W of EL	HOUSE Short: OPP of S/C	RENEW TO PL
236	PERTH AV RESIDENTIAL	0.3 m	16 mm	LEAD	Long: 16.2 m E of WL HOUSE Short: 2.5 m E of WL	HOUSE Short: OPP of S/C	RENEW TO PL

- CONSTRUCTION NOTES**
1. EXPOSE WATERMAIN CONNECTIONS AND CONFIRM INVERTS PRIOR TO CONSTRUCTION.
  2. INSTALL WATERMAIN BY TRENCHLESS METHODS.
  3. ALL MATERIALS SHALL CONFORM TO THE CITY OF WINNIPEG STANDARD CONSTRUCTION SPECIFICATIONS.
  4. MINIMUM COVER TO TOP OF PROPOSED WATERMAIN SHALL BE 2.5m FROM STREET CENTERLINE.
  5. INSTALL ALL HYDRANTS WITH FLANGE ELEVATION 50mm- 150mm ABOVE FINISHED GRADE.
  6. REPLACE ALL EXISTING LEAD SERVICES FROM THE PROPOSED WATERMAIN TO PROPERTY LINE.
  7. NOTIFY ALL AFFECTED RESIDENTS AND BUSINESSES 24 HOURS IN ADVANCE OF ANY WATER SHUTDOWN OR DISRUPTION OF SERVICE.
  8. LOCATION OF PREVIOUS WATERMAIN BREAKS SHOWN THUS ⊕ IS APPROXIMATE AND FOR INFORMATION ONLY. NO GUARANTEE IS GIVEN TO THE COMPLETENESS OR ACCURACY OF THIS INFORMATION.
  9. LOCATION OF WATER SERVICES SHOWN ON DRAWINGS ARE APPROXIMATE. THE CONTRACTOR SHALL FIELD LOCATE ALL WATER SERVICES PRIOR TO CONSTRUCTION.
  10. ALL VALVES SHALL BE BLACK TOP (CLOCKWISE TO CLOSE).
  11. BACKFILL UNDER OR WITHIN 1.0m OF PAVEMENTS, INCLUDING SIDEWALKS SHALL BE CLASS 3 BACKFILL EXCEPT AS NOTED. BACKFILL IN BOULEVARDS SHALL BE CLASS 5 BACKFILL.
  12. RENEW ALL LEAD SERVICES TO PROPERTY LINE.



**METRIC**  
 WHOLE NUMBERS INDICATE MILLIMETRES  
 DECIMALIZED NUMBERS INDICATE METRES



EXISTING	LEGEND - PLAN	PROPOSED	EXISTING	LEGEND - PROFILE	PROPOSED
	WATERMAIN			WATERMAIN	
	HYDRANT VALVE			HYDRO TELEPHONE	
	LAND DRAINAGE SEWER			CONCRETE PROPERTY LINE	
	MANHOLE			SURVEY BAR	
	CATCH BASIN			CURB STOP	
	CURB INLET			TREE	
	JUNCTIONS			ANODE	
	CULVERT GAS			CONCRETE SIDEWALK	
	EXISTING FENCE			PROPOSED FENCE	

**LOCATION APPROVED UNDERGROUND STRUCTURES**

SUPV. U/G STRUCTURES DATE COMMITTEE

**NOTE:**  
 LOCATION OF UNDERGROUND STRUCTURES AS SHOWN ARE BASED ON THE BEST INFORMATION AVAILABLE, BUT NO GUARANTEE IS GIVEN THAT ALL EXISTING UTILITIES ARE SHOWN OR THAT THE GIVEN LOCATIONS ARE EXACT. CONFIRMATION OF EXISTENCE AND EXACT LOCATION OF ALL SERVICES MUST BE OBTAINED FROM THE INDIVIDUAL UTILITIES BEFORE PROCEEDING WITH CONSTRUCTION.

NO.	REVISIONS	DATE	BY
0	ISSUED FOR TENDER	05/06/16	GSK
A	ISSUED FOR REVIEW	05/06/13	GSK

**EARTH TECH**  
 A tyco INTERNATIONAL LTD. COMPANY  
 Earth Tech (Canada) Inc. Winnipeg, Manitoba 204-477-5381

DESIGNED BY: GSK  
 CHECKED BY: KWF

DRAWN BY: MAF  
 APPROVED BY:

HOR. SCALE: 1:250  
 VERTICAL SCALE: 1:50

RELEASED FOR CONSTRUCTION BY: K. ZUREK

DATE: 2005/05/12  
 DATE: 05/06/16

ENGINEER'S SEAL

ORIGINAL SIGNED BY  
 K.W. FITCHETT  
 JUNE 16/05

CONSULTANT DRAWING NO.  
 85539-C08

**THE CITY OF WINNIPEG**  
 Winnipeg WATER AND WASTE DEPARTMENT

**2005 WATERMAIN RENEWALS CONTRACT 10**

PERTH AVENUE STATION 1+20 TO 15.7m EAST OF AIKINS STREET

SHEET 8 OF 16  
 CITY DRAWING NUMBER D-8771