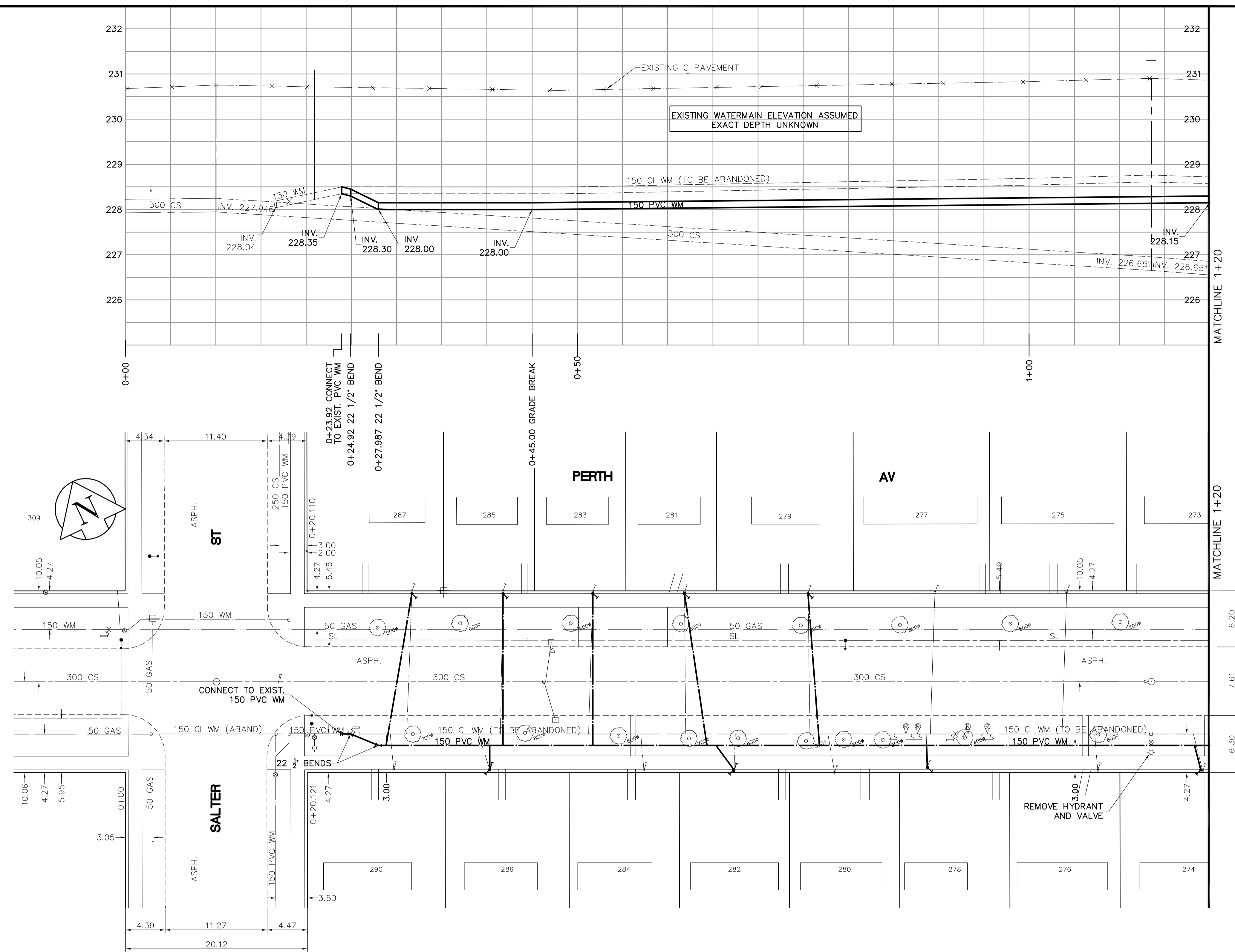


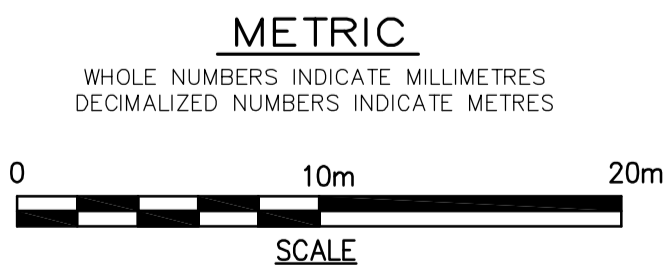
SHEET: GOW-WM-A1 (11/2002) FILE NAME: L:\work\85539\026-CAD\WMT\Comp\85539-C07.dwg PLOTTED BY: michael.kocher DATE: 2005-05-16 8:49am



- CONSTRUCTION NOTES**
1. EXPOSE WATERMAIN CONNECTIONS AND CONFIRM INVERTS PRIOR TO CONSTRUCTION.
 2. INSTALL WATERMAIN BY TRENCHLESS METHODS.
 3. ALL MATERIALS SHALL CONFORM TO THE CITY OF WINNIPEG STANDARD CONSTRUCTION SPECIFICATIONS.
 4. MINIMUM COVER TO TOP OF PROPOSED WATERMAIN SHALL BE 2.5m FROM STREET CENTERLINE.
 5. INSTALL ALL HYDRANTS WITH FLANGE ELEVATION 50mm- 150mm ABOVE FINISHED GRADE.
 6. REPLACE ALL EXISTING LEAD SERVICES FROM THE PROPOSED WATERMAIN TO PROPERTY LINE.
 7. NOTIFY ALL AFFECTED RESIDENTS AND BUSINESSES 24 HOURS IN ADVANCE OF ANY WATER SHUTDOWN OR DISRUPTION OF SERVICE.
 8. LOCATION OF PREVIOUS WATERMAIN BREAKS SHOWN THUS \oplus IS APPROXIMATE AND FOR INFORMATION ONLY. NO GUARANTEE IS GIVEN TO THE COMPLETENESS OR ACCURACY OF THIS INFORMATION.
 9. LOCATION OF WATER SERVICES SHOWN ON DRAWINGS ARE APPROXIMATE. THE CONTRACTOR SHALL FIELD LOCATE ALL WATER SERVICES PRIOR TO CONSTRUCTION.
 10. ALL VALVES SHALL BE BLACK TOP (CLOCKWISE TO CLOSE).
 11. BACKFILL UNDER OR WITHIN 1.0m OF PAVEMENTS, INCLUDING SIDEWALKS SHALL BE CLASS 3 BACKFILL EXCEPT AS NOTED. BACKFILL IN BOULEVARDS SHALL BE CLASS 5 BACKFILL.
 12. RENEW ALL LEAD SERVICES TO PROPERTY LINE.

ADDRESS	NATURE OF SERVICE	DISTANCE SC TO PROPERTY	SIZE	MATERIAL	POSITION OF SC (curb stop)	POSITION OF CC (corp)	COMMENTS:
290	PERTH AV	COMMERCIAL	0.2 m	19 mm	COPPER	Long: 8.2 m E of EL HOUSE Short: 3.0 m W of EL	PERTH/SALTER Long: SAME AS of S/C
287	PERTH AV	RESIDENTIAL	0.2 m	13 mm	LEAD	Long: 10.1 m E of EL HOUSE Short: 1.5 m W of EL	PERTH/SALTER Long: SAME AS of S/C RENEW TO PL
286	PERTH AV	RESIDENTIAL	0.2 m	19 mm	LEAD	Long: 18.9 m E of EL HOUSE Short: 3.1 m E of EL	PERTH/SALTER Long: SAME AS of S/C RENEW TO PL
285	PERTH AV	RESIDENTIAL	0.0 m	16 mm	LEAD	Long: 20.4 m E of EL HOUSE Short: 1.2 m W of EL	PERTH/SALTER Long: 0.9 m W of S/C RENEW TO PL
284	PERTH AV	RESIDENTIAL	10.4 m	19 mm	COPPER	Long: 1.2 m W of EL HOUSE Short: 1.2 m W of EL	PERTH/SALTER Long: OPP of S/C
283	PERTH AV	RESIDENTIAL	0.2 m	13 mm	LEAD	Long: 30.2 m E of EL HOUSE Short: 1.8 m W of EL	PERTH/SALTER Long: OPP of S/C RENEW TO PL
282	PERTH AV	RESIDENTIAL	0.2 m	19 mm	LEAD	Long: 47.4 m E of EL HOUSE Short: 4.9 m E of EL	SALTER Long: SAME AS of S/C RENEW TO PL
281	PERTH AV	RESIDENTIAL	0.2 m	13 mm	LEAD	Long: 41.9 m E of EL HOUSE Short: 1.7 m W of EL	SALTER Long: SAME AS of S/C RENEW TO PL

ADDRESS	NATURE OF SERVICE	DISTANCE SC TO PROPERTY	SIZE	MATERIAL	POSITION OF SC (curb stop)	POSITION OF CC (corp)	COMMENTS:
280	PERTH AV	RESIDENTIAL	0.3 m	19 mm	COPPER	Long: 58.5 m E of EL HOUSE Short: 4.2 m E of EL	SALTER Long: 0.9 m W of S/C
279	PERTH AV	RESIDENTIAL	0.2 m	13 mm	LEAD	Long: 55.6 m E of EL HOUSE Short: 1.2 m W of EL	SALTER Long: SAME AS of S/C RENEW TO PL
278	PERTH AV	RESIDENTIAL	0.5 m	19 mm	LEAD	Long: 24.7 m W of EL HOUSE Short: 2.2 m E of EL	PH 1ST E SALTER Long: SAME AS of S/C RENEW TO PL
277	PERTH AV	RESIDENTIAL	0.0 m	19 mm	COPPER	Long: 24.2 m W of EL HOUSE Short: 5.0 m W of EL	PH 1ST E SALTER Long: OPP of S/C
276	PERTH AV	RESIDENTIAL	0.3 m	19 mm	COPPER	Long: 6.0 m W of EL HOUSE Short: 0.9 m W of EL	1ST HTD W AIKINS Long: SAME AS of S/C
275	PERTH AV	RESIDENTIAL	0.3 m	19 mm	COPPER	Long: 83.8 m E of EL HOUSE Short: 5.6 m W of EL	1ST HTD W AIKINS Long: SAME AS of S/C
274	PERTH AV	RESIDENTIAL	0.2 m	19 mm	LEAD	Long: 5.8 m E of EL HOUSE Short: 4.3 m W of EL	1ST HYD W AIKINS Long: 0.9 m W of S/C RENEW TO PL
273	PERTH AV	RESIDENTIAL	0.3 m	19 mm	COPPER	Long: 0.7 m W of EL HOUSE Short: 0.7 m W of EL	1ST HYD W AIKINS Long: SAME AS of S/C



EXISTING	LEGEND - PLAN	PROPOSED	EXISTING	LEGEND - PROFILE	PROPOSED
	WATERMAIN			WATERMAIN	
	HYDRANT VALVE			TELEPHONE	
	LAND DRAINAGE SEWER			CONCRETE ASPHALT PROPERTY LINE	
	WASTEWATER SEWER			SURVEY BAR	
	MANHOLE			CURB STOP	
	CATCH BASIN			TREE	
	CURB INLET			ANODE	
	JUNCTIONS			CONCRETE SIDEWALK	
	CULVERT			FENCE	
	GAS				

LOCATION APPROVED UNDERGROUND STRUCTURES

SUPV. U/G STRUCTURES COMMITTEE DATE

NOTE:
LOCATION OF UNDERGROUND STRUCTURES AS SHOWN ARE BASED ON THE BEST INFORMATION AVAILABLE. BUT NO GUARANTEE IS GIVEN THAT ALL EXISTING UTILITIES ARE SHOWN OR THAT THE GIVEN LOCATIONS ARE EXACT. CONFIRMATION OF EXISTENCE AND EXACT LOCATION OF ALL SERVICES MUST BE OBTAINED FROM THE INDIVIDUAL UTILITIES BEFORE PROCEEDING WITH CONSTRUCTION.

NO.	REVISIONS	DATE	BY
0	ISSUED FOR TENDER	05/06/16	GSK
A	ISSUED FOR REVIEW	05/06/13	GSK

EARTH TECH
A tyco INTERNATIONAL LTD. COMPANY
Earth Tech (Canada) Inc. Winnipeg, Manitoba 204-477-5381

DESIGNED BY: GSK
CHECKED BY: KWF

DRAWN BY: MAF
APPROVED BY:

HOR. SCALE: 1:250
VERTICAL SCALE: 1:50

RELEASED FOR CONSTRUCTION BY: K. ZUREK

ENGINEER'S SEAL

ORIGINAL SIGNED BY: K.W. FITCHETT
DATE: JUNE 16/05

CONSULTANT DRAWING NO. 85539-C07

THE CITY OF WINNIPEG
Winnipeg WATER AND WASTE DEPARTMENT

2005 WATERMAIN RENEWALS CONTRACT 10

PERTH AVENUE
SALTER STREET TO
STATION 1+20

SHEET 7 OF 16
CITY DRAWING NUMBER D-8770