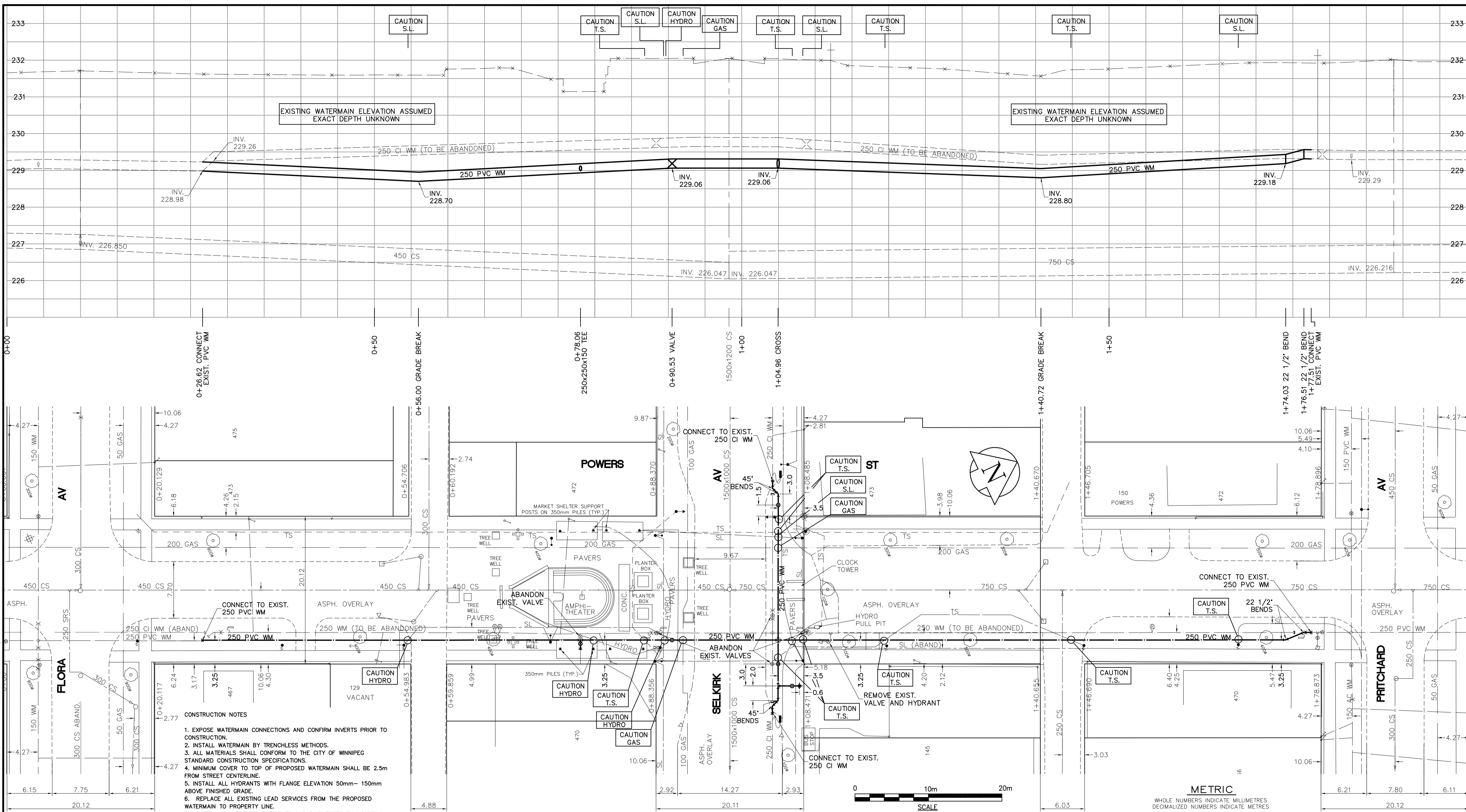


SHEET: GOW-WM-A1 (11/2002)
 FILE NAME: L:\work\85539\026-CAD\WWT\COMP\M85539-026.dwg
 LAYOUT NAME: M85539-026
 PLOTTED BY: michael.kocinski
 Jun 16, 2005 - 8:43am



CONSTRUCTION NOTES

1. EXPOSE WATERMAIN CONNECTIONS AND CONFIRM INVERTS PRIOR TO CONSTRUCTION.
2. INSTALL WATERMAIN BY TRENCHLESS METHODS.
3. ALL MATERIALS SHALL CONFORM TO THE CITY OF WINNIPEG STANDARD CONSTRUCTION SPECIFICATIONS.
4. MINIMUM COVER TO TOP OF PROPOSED WATERMAIN SHALL BE 2.5m FROM STREET CENTERLINE.
5. INSTALL ALL HYDRANTS WITH FLANGE ELEVATION 50mm - 150mm ABOVE FINISHED GRADE.
6. REPLACE ALL EXISTING LEAD SERVICES FROM THE PROPOSED WATERMAIN TO PROPERTY LINE.
7. NOTIFY ALL AFFECTED RESIDENTS AND BUSINESSES 24 HOURS IN ADVANCE OF ANY WATER SHUTDOWN OR DISRUPTION OF SERVICE.
8. LOCATION OF PREVIOUS WATERMAIN BREAKS SHOWN THUS (B) IS APPROXIMATE AND FOR INFORMATION ONLY. NO GUARANTEE IS GIVEN TO THE COMPLETENESS OR ACCURACY OF THIS INFORMATION.
9. LOCATION OF WATER SERVICES SHOWN ON DRAWINGS ARE APPROXIMATE. THE CONTRACTOR SHALL FIELD LOCATE ALL WATER SERVICES PRIOR TO CONSTRUCTION.
10. ALL VALVES SHALL BE RED TOP (COUNTER CLOCKWISE TO CLOSE).
11. BACKFILL UNDER OR WITHIN 1.0m OF PAVEMENTS, INCLUDING SIDEWALKS SHALL BE CLASS 3 BACKFILL EXCEPT AS NOTED. BACKFILL IN BOULEVARDS SHALL BE CLASS 5 BACKFILL. BACKFILL UNDER SELKIRK AVENUE STREET PAVEMENT SHALL BE CLASS 1 BACKFILL.
12. RENEW ALL LEAD SERVICES TO PROPERTY LINE.

ADDRESS	NATURE OF SERVICE	DISTANCE SC TO PROPERTY	SIZE	MATERIAL	POSITION OF SC (curb stop)	POSITION OF CC (corp)	COMMENTS:	ADDRESS	NATURE OF SERVICE	DISTANCE SC TO PROPERTY	SIZE	MATERIAL	POSITION OF SC (curb stop)	POSITION OF CC (corp)	COMMENTS:
473 FLORA AV	RESIDENTIAL	0.3 m	13 mm	COPPER	Long: 12.8 m N of NL Short: 0.6 m N of NL	FLORA ON PC Long: 0.6 m N of S/C FLORA Short: 0.6 m N of S/C		150 POWERS ST	COMMERCIAL	0.5 m	19 mm	COPPER	Long: 29.3 m S of SL Short: 3.7 m N of SL	PRITCHARD Long: 0.6 m S of S/C PRITCHARD Short: 0.6 m S of S/C	SERVICED OFF SELKIRK
467 FLORA AV	RESIDENTIAL	0.5 m	19 mm	COPPER	Long: 12.8 m E of EL Short: 0.5 m W of EL	POWERS Long: 0.5 m W of S/C HOUSE Short: 0.5 m W of S/C		145 POWERS ST	FIRE/DOM.	4.0 m	150 mm	DI	Long: 23.2 m E of EL Short: 4.6 m W of EL	POWERS Long: 0.5 m W of S/C BLDG Short: 0.5 m W of S/C	SERVICED OFF SELKIRK
120 POWERS ST	RESIDENTIAL	0.2 m	19 mm	COPPER	Long: 13.1 m S of SL Short: 2.3 m S of SL	FLORA Long: 2.1 m N of S/C HOUSE Short: 2.1 m N of S/C		129 POWERS ST	RESIDENTIAL	0.3 m	19 mm	COPPER	Long: 30.2 m N of NL Short: 3.5 m S of NL	HOUSE Long: 0.9 m N of S/C HOUSE Short: 0.9 m N of S/C	WATER CUT OFF - TO BE ABANDONED
116 POWERS ST	RESIDENTIAL	0.2 m	19 mm	COPPER	Long: 13.4 m S of SL Short: 1.5 m S of SL	FLORA Long: 2.4 m N of S/C HOUSE Short: 2.4 m N of S/C		467 PRITCHARD AV	COMMERCIAL	0.5 m	13 mm	LEAD	Long: 29.0 m N of NL Short: 2.4 m S of NL	PRITCHARD Long: 0.6 m S of S/C FOUNDATION Short: 0.6 m S of S/C	RISER ON SWR AT MAIN "Y" 3" FR BLDG ON POWERS NEW SEWER
112 POWERS ST	RESIDENTIAL	0.2 m	19 mm	COPPER	Long: 33.2 m S of SL Short: 7.3 m S of SL	FLORA Long: 2.1 m N of S/C ON SOUTH W Short: 2.1 m N of S/C		472 SELKIRK AV	COMMERCIAL	0.3 m	38 mm	COPPER	Long: 11.9 m S of SL Short: 7.3 m N of SL	SELKIRK Long: 1.2 m S of S/C SELKIRK Short: 1.2 m S of S/C	SEE PERMIT FOR SKETC SERV OFF POWERS
108 POWERS ST	RESIDENTIAL	0.2 m	19 mm	COPPER	Long: 35.1 m S of SL Short: 2.1 m W of NL	FLORA Long: 3.0 m W of S/C HOUSE Short: 3.0 m W of S/C		470 SELKIRK AV	COMMERCIAL	0.0 m	25 mm	COPPER	Long: 7.0 m S of SL Short: 6.1 m S of SL	SELKIRK Long: 0.6 m S of S/C SELKIRK Short: 0.6 m S of S/C	

APECM
 Certificate of Authorization
 Earth Tech Canada Inc.
 No. 730 Expiry: April 30, 2006

EXISTING	LEGEND - PLAN	PROPOSED	EXISTING	LEGEND - PLAN	PROPOSED	EXISTING	LEGEND - PROFILE	PROPOSED
150 mm W.M.	WATERMAIN	150 mm W.M.	Hydrant	HYDRANT	Hydrant	150 mm W.M.	WATERMAIN	150 mm W.M.
Hydrant Valve	HYDRANT VALVE	Hydrant Valve	Telephone	TELEPHONE	Telephone	Hydrant Valve	HYDRANT VALVE	Hydrant Valve
300mm L.D.S.	LAND DRAINAGE SEWER	300mm L.D.S.	Concrete	CONCRETE	Concrete	300mm L.D.S.	LAND DRAINAGE SEWER	300mm L.D.S.
250mm W.W.S.	WASTEWATER SEWER	250mm W.W.S.	Asphalt	ASPHALT	Asphalt	250mm W.W.S.	WASTE WATER SEWER	250mm W.W.S.
Manhole	MANHOLE	Manhole	Property Line	PROPERTY LINE	Property Line	Manhole	MANHOLE	Manhole
Catch Basin	CATCH BASIN	Catch Basin	Survey Bar	SURVEY BAR	Survey Bar	Catch Basin	CATCH BASIN	Catch Basin
Curb Inlet	CURB INLET	Curb Inlet	Curb Stop	CURB STOP	Curb Stop	Curb Inlet	CURB INLET	Curb Inlet
Junctions	JUNCTIONS	Junctions	Tree	TREE	Tree	Junctions	JUNCTIONS	Junctions
Culvert	CULVERT	Culvert	Anode	ANODE	Anode	Culvert	CULVERT	Culvert
Gas	GAS	Gas	Concrete Sidewalk	CONCRETE SIDEWALK	Concrete Sidewalk	Gas	GAS	Gas
Existing	LEGEND - PLAN	Proposed	Fence	FENCE	Fence	Existing	LEGEND - PROFILE	Proposed

LOCATION APPROVED UNDERGROUND STRUCTURES

SUPV. U/G STRUCTURES DATE COMMITTEE

NOTE:
 LOCATION OF UNDERGROUND STRUCTURES AS SHOWN ARE BASED ON THE BEST INFORMATION AVAILABLE. BUT NO GUARANTEE IS GIVEN THAT ALL EXISTING UTILITIES ARE SHOWN OR THAT THE GIVEN LOCATIONS ARE EXACT. CONFIRMATION OF EXISTENCE AND EXACT LOCATION OF ALL SERVICES MUST BE OBTAINED FROM THE INDIVIDUAL UTILITIES BEFORE PROCEEDING WITH CONSTRUCTION.

B.M. 26-020 N.W. Cor. SELKIRK Ave and POWERS ST. Brass Plug in Conc. Pile, 2.4 m E. of N.L. SELKIRK Ave & 0.3 m N. of N.L. of SELKIRK Ave.

NO.	REVISIONS	DATE	BY
0	ISSUED FOR TENDER	05/06/16	GSK
A	ISSUED FOR REVIEW	05/06/13	GSK

EARTH TECH
 A tyco INTERNATIONAL LTD. COMPANY
 Earth Tech (Canada) Inc. Winnipeg, Manitoba 204-477-5381

DESIGNED BY: GSK
 CHECKED BY: KWF
 DRAWN BY: MAF
 APPROVED BY: KWF

HOR. SCALE: 1:250
 VERTICAL SCALE: 1:50

RELEASED FOR CONSTRUCTION BY: K. ZUREK
 DATE: 05/06/16

ENGINEER'S SEAL
 ORIGINAL SIGNED BY: K.W. FITCHETT
 JUNE 16/05

CONSULTANT DRAWING NO. 85539-C02

THE CITY OF WINNIPEG
 Winnipeg WATER AND WASTE DEPARTMENT

2005 WATERMAIN RENEWALS CONTRACT 10

POWERS STREET FLORA AVENUE TO PRITCHARD AVENUE

SHEET 2 OF 16
 CITY DRAWING NUMBER D-8765