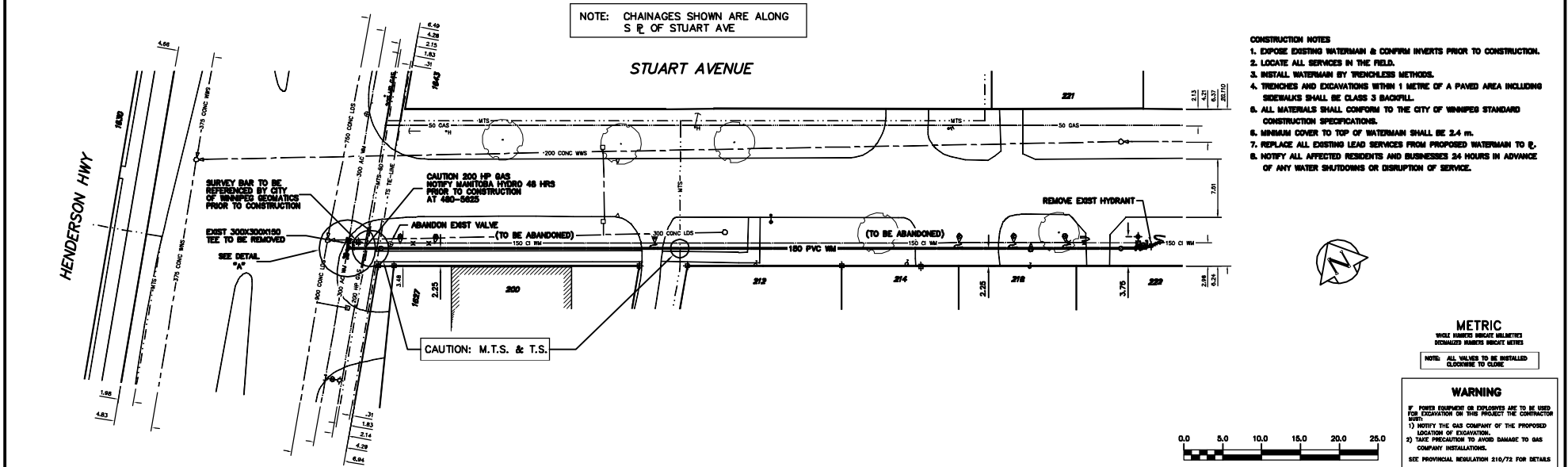


WATER SERVICE INFORMATION

ADDRESS	SIZE(mm)	SIZE(mm)	SHORT & LONG MEASUREMENT	CORP. LOCATION
(STREET)	(STREET)	(PROP)	(PROP)	
300 STUART AVE				NO INFO
RESIDENTIAL				
303 STUART AVE	30	30	8.23 RE USE CORR.	NO INFO
RESIDENTIAL	COPPER	COPPER	7.82 FROM USE FRONT	
310 STUART AVE	30	30	1.83 RE USE CORR.	NO INFO
RESIDENTIAL	COPPER	COPPER	7.90 OUT FROM BAY WINDOW	
315 STUART AVE	30	30	7.57 FROM USE	NO INFO
RESIDENTIAL	COPPER	COPPER	10.87 FROM USE FT. WINDOW	6.38 W HYDR.
318 STUART AVE	30	30	8.24 RE CORR. USE	NO INFO
RESIDENTIAL	COPPER	COPPER	7.47 FR FRUIT. OF BLDG	
322 STUART AVE	30	30	1.22 W/4 OF USE	NO INFO
RESIDENTIAL	COPPER	COPPER	6.14 FR USE FRONT	
327 STUART AVE	30	30	1.82 W/4 OF CORR.	NO INFO
RESIDENTIAL	COPPER	COPPER	7.03 RE BLDG CORNL.	SERV. FROM HENDERSON
1635 HENDERSON HT	30	30	18.70 RE FRUIT. BLDG	NO INFO
RESIDENTIAL	CI	CI	8.23 FR OF BLDG	NO INFO
1635 HENDERSON HT	30	30	7.82 OUT FROM BLDG	SERV. OFF GILGORE
RESIDENTIAL	COPPER	COPPER		

* SERVICES TO BE RENEWED TO R ALL OTHERS TO BE RECONNECTED



- CONSTRUCTION NOTES**
1. EXPOSE EXISTING WATERMAIN & CONFORM INVERTS PRIOR TO CONSTRUCTION.
 2. LOCATE ALL SERVICES IN THE FIELD.
 3. INSTALL WATERMAIN BY TRENCHLESS METHODS.
 4. TRENCHES AND EXCAVATIONS WITHIN 1 METRE OF A PAVED AREA INCLUDING SIDEWALKS SHALL BE CLASS 3 BACKFILL.
 5. ALL MATERIALS SHALL CONFORM TO THE CITY OF WINNIPEG STANDARD CONSTRUCTION SPECIFICATIONS.
 6. MINIMUM COVER TO TOP OF WATERMAIN SHALL BE 3.4 m.
 7. REPLACE ALL EXISTING LEAD SERVICES FROM PROPOSED WATERMAIN TO R.
 8. NOTIFY ALL AFFECTED RESIDENTS AND BUSINESSES 24 HOURS IN ADVANCE OF ANY WATER SHUTDOWNS OR DISRUPTION OF SERVICE.

METRIC
 WHOLE NUMBERS MEASUREMENTS
 DECIMALIZED NUMBERS PRECISE METERS

NOTE: ALL VALUES TO BE INSTALLED CLOSURE TO CLOSE

WARNING

IF POWER EQUIPMENT OR EMPLOYEES ARE TO BE USED FOR EXCAVATION ON THIS PROJECT THE CONSTRUCTION MUST:

- 1) NOTIFY THE GAS COMPANY OF THE PROPOSED LOCATION OF EXCAVATION.
- 2) TAKE PRECAUTION TO AVOID DAMAGE TO GAS COMPANY INSTALLATIONS.

SEE PROVINCIAL REGULATION 216/72 FOR DETAILS

200 WM	WATERMAIN	200 WM	SL - HYDRD	350 MTS	WATERMAIN	150 WM	LOCATION APPROVED	B.M. ELEV.	FIELD BOOK #	CITY OF WINNIPEG WATER AND WASTE ENGINEERING DIVISION	ENGINEER'S SEAL	THE CITY OF WINNIPEG WATER AND WASTE DEPARTMENT														
HYDRANT	VALVE	50 GAS	TRAFFIC SIGNALS	50 GAS	LAND DRAINAGE SEWER	200-300-400	UNDERGROUND STRUCTURES	POSTED TO LBS			DESIGNED BY NC CHECKED BY TW DRAWN BY C.B./BAW APPROVED BY KZ HOR. SCALE 1:250 VERTICAL 1:50 RELEASED FOR CONSTRUCTION		ORIGINAL SIGNED BY K.R. ZUREK 05/06/13	2005 WATERMAIN RENEWALS AND ASSOCIATED WORKS STUART AVENUE HENDERSON HIGHWAY TO 90 m EAST OF HENDERSON HIGHWAY												
500 LBS	LAND DRAINAGE SEWER	375 WWS	WASTEWATER SEWER	MANHOLE	CATCH BASIN	CURB INLET	REDUCER	COUPLER	ANCHOR	EXISTING	LEGEND-PLAN	PROPOSED	EXISTING	LEGEND-PLAN	PROPOSED	EXISTING	LEGEND-PROFILE	PROPOSED	NO. REVISIONS	DATE	BY	DATE	2005 06 13	DATE	80 OPPORTUNITY 338-2005 FILENAME: P_8763.dwg PLOT DATE: 2005 06 13	SHEET 12 OF 12 CITY DRAWING NUMBER D-8763