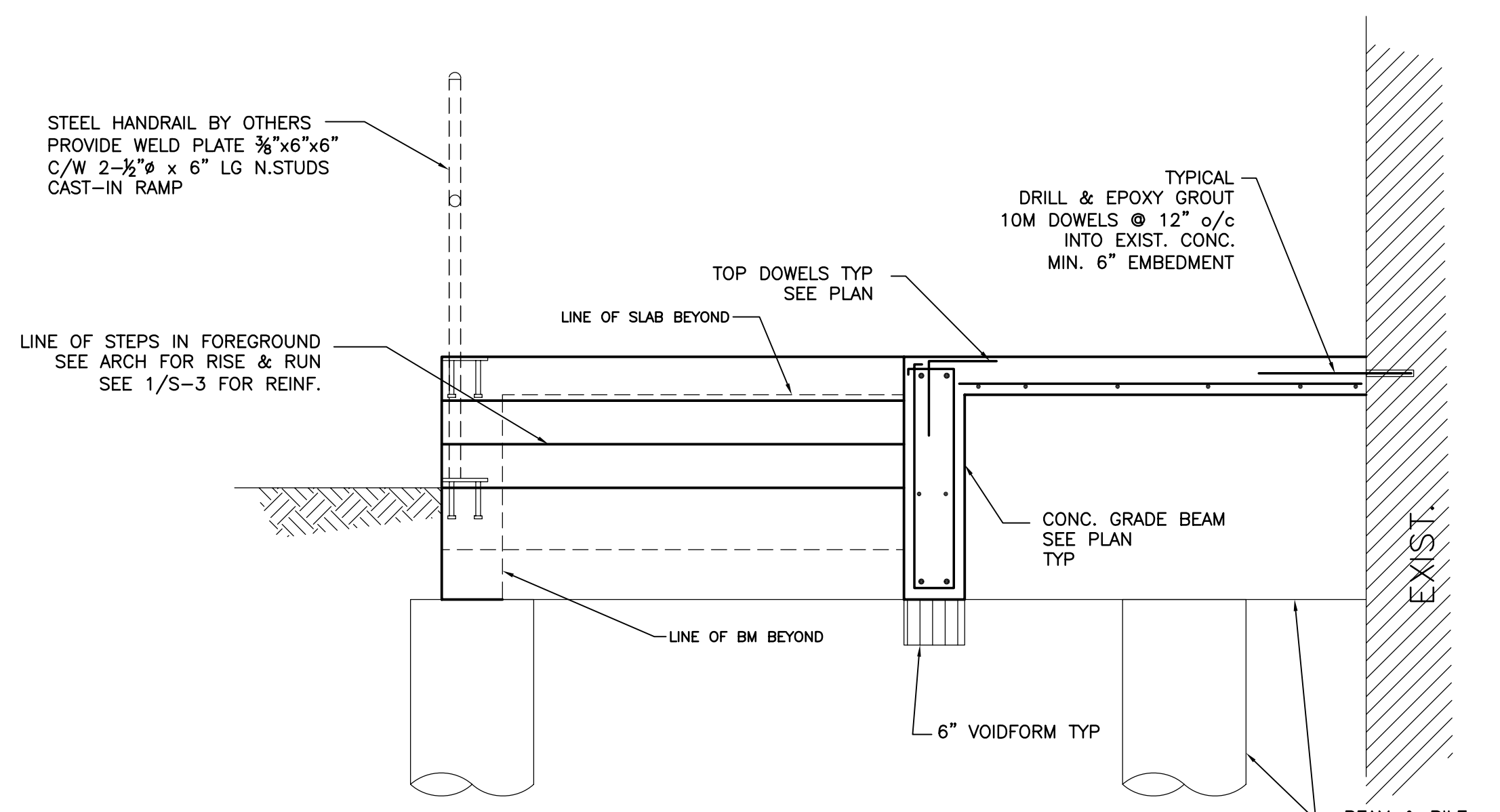


1 SECTION
S-3 3/4" = 1'-0"



2 SECTION
S-3 3/4" = 1'-0"

no.	revision	date	by
2	NOTES REVISION	05-06-08	FDW
1	RAMP REVISION	05-02-18	FDW

This drawing must not be scaled.
The Contractor must verify all dimensions, datums and levels prior to commencement of work. All errors and omissions must be reported immediately to the Contract Administrator.
Variations and modifications to work shown on this drawing shall not be carried out without written permission from the Architect.
This drawing is the exclusive property of the Architect and cannot be reproduced without written permission of the Architect. Reproduction must bear the name of the Architect. Copyright © 2004

ORIGINAL DRAWING STAMPED BY,
F.D. WOLFROM, P.Eng
DATED 05.03.18

WOLFROM ENGINEERING LTD
CONSULTING ENGINEERS
345 WARDLAW AVENUE
WINNIPEG, CANADA R3L 0L5
(204) 452-0041 FAX: 284-8680
E-mail: wolfrom@wolfromeng.com

architect
HAROLD FUNK ARCHITECT INC.
201-171 Donald Street
Winnipeg, Manitoba
Canada R3C 1M4
Tel: 204 943 5087
Fax: 204 943 9231
E-mail: funkarch@mts.net

project
LUXTON COMMUNITY CENTRE

Winnipeg, Manitoba
sheet title
SECTIONS & DETAILS

project no. W04-367 sheet no.
scale AS NOTED
drawn by CHS
approved by FDW
date 05.02.18

S-3

Plotted: 05-02-18 at 10:30:32 - Layout: 'S-3' - Plot Scale: '1/8" = 1'-0"
 CAD file (by CHS): 'C:\Users\chris\OneDrive\Work\1811-1811-1811-1811.dwg'