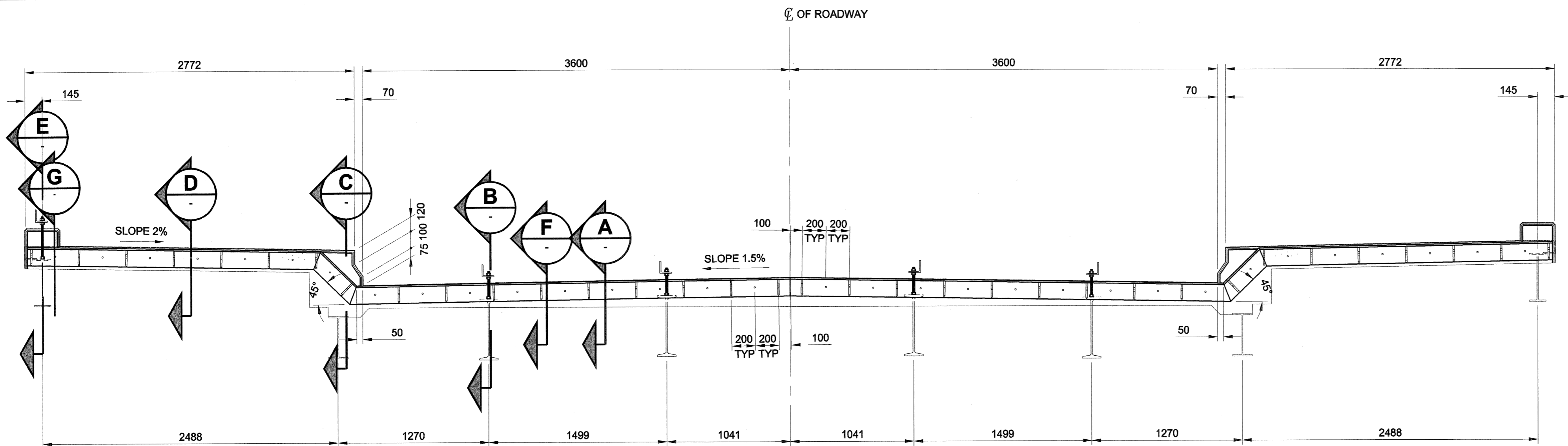


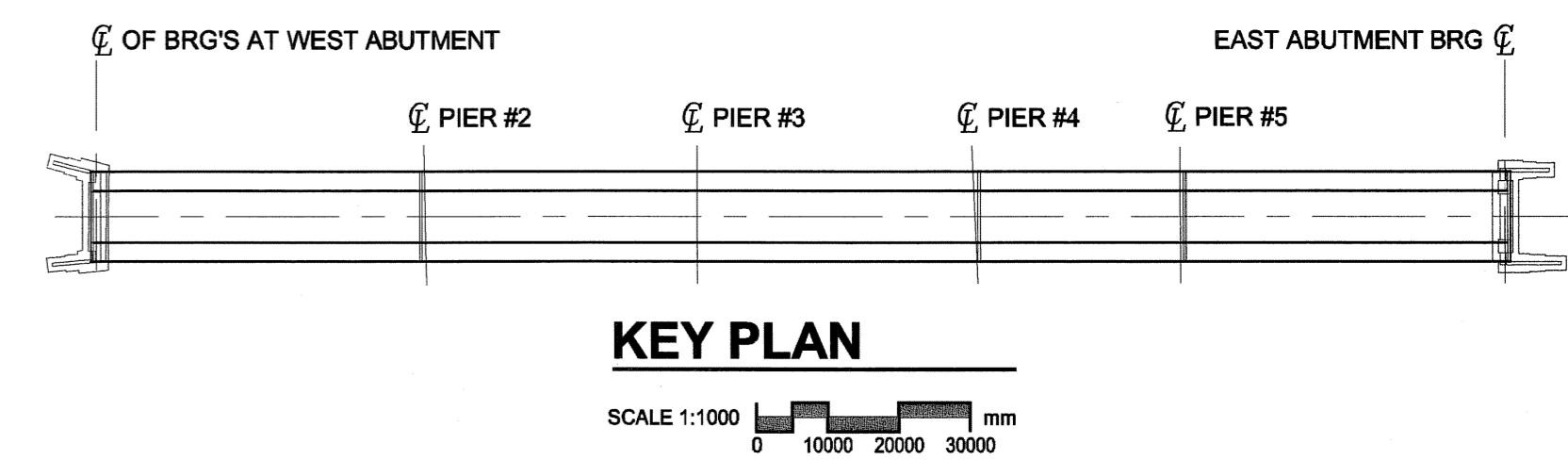
D SIZE 22" x 34" (559mm x 864mm)



TYPICAL ELEVATION

SCALE 1:25
0 250 500 750 mm

FOR EXPANSION JOINTS AT E ABUT, W ABUT, PIER #2, #4 AND #5



KEY PLAN

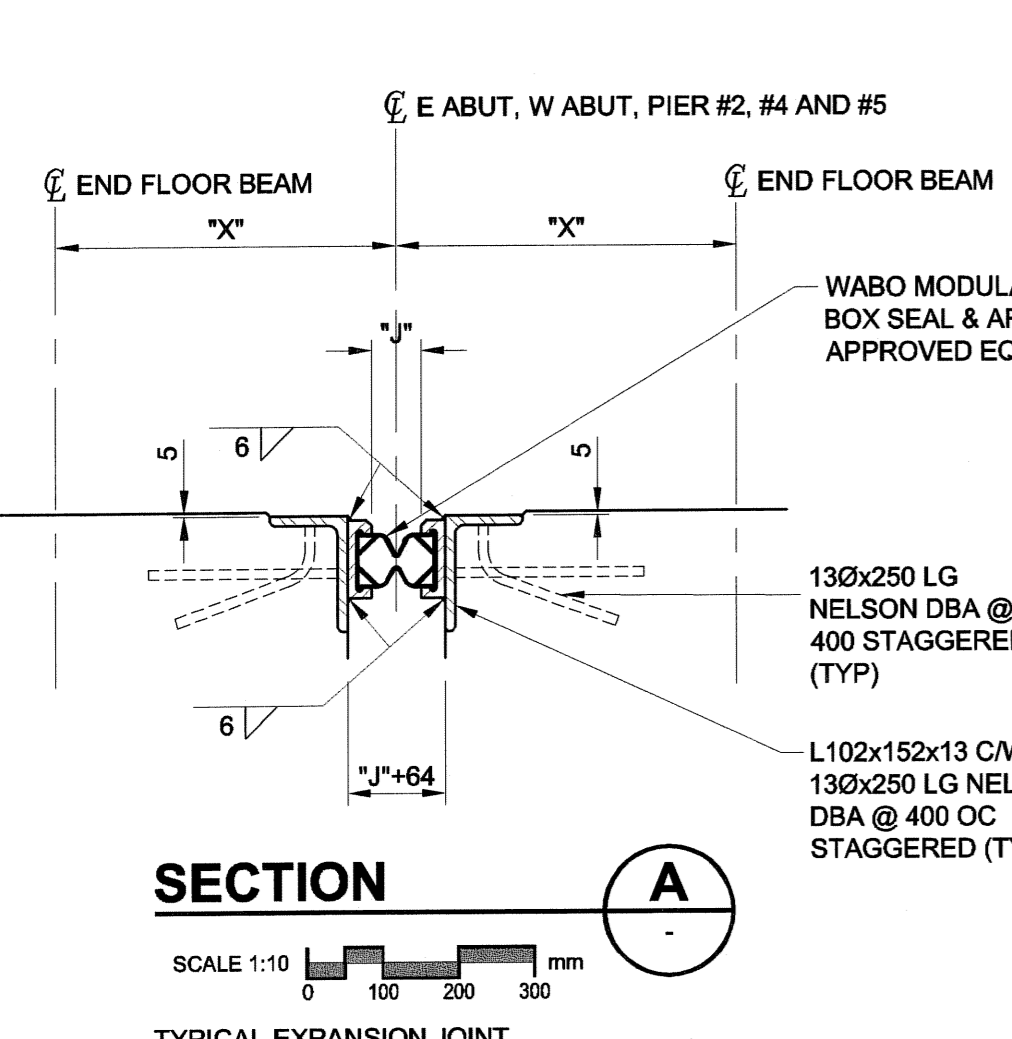
SCALE 1:1000
0 10000 20000 30000 mm

DRAWING NOTES

- SHOP DRAWINGS SHALL BE SUBMITTED FOR REVIEW AT LEAST FOURTEEN (14) WORKING DAYS PRIOR TO FABRICATION. THE EXPANSION JOINT ASSEMBLIES SHALL BE DESIGNED TO CARRY AASHTO HS25-44 LIVE LOADING.
- STEEL SHALL BE IN ACCORDANCE WITH CSA STANDARD G40.21M GRADE 300W OR EQUAL.
- WELDING SHALL BE OF LOW HYDROGEN CLASSIFICATION. MANUAL ELECTRODES SHALL BE E7018 OR E7018. ALL WELDING SHALL BE IN ACCORDANCE WITH CSA STANDARD W59.
- ALL STEEL SURFACES SHALL BE HOT DIP GALVANIZED TO A NET RETENTION OF 600 g/m².
- ALL AREAS OF DAMAGED GALVANIZING SHALL BE REPAIRED BY USING THE GALVALLOY PROCEDURE AS SPECIFIED.
- INSTALLATION TEMPERATURE SHALL BE TAKEN AS THE MEAN SITE SHADE AIR TEMPERATURE FOR 48 HOURS PRIOR TO JOINT INSTALLATION AT THE STRUCTURE.
- D300 BOX SEAL TO BE SUPPLIED IN ONE PIECE MINIMUM LENGTH OF 13700.

EXPANSION JOINT DIMENSIONS FOR END FLOOR BEAM TO CENTRE OF PIER	"X" DISTANCE
PIER #2	±515mm
PIER #4	±465mm
PIER #5	±450mm

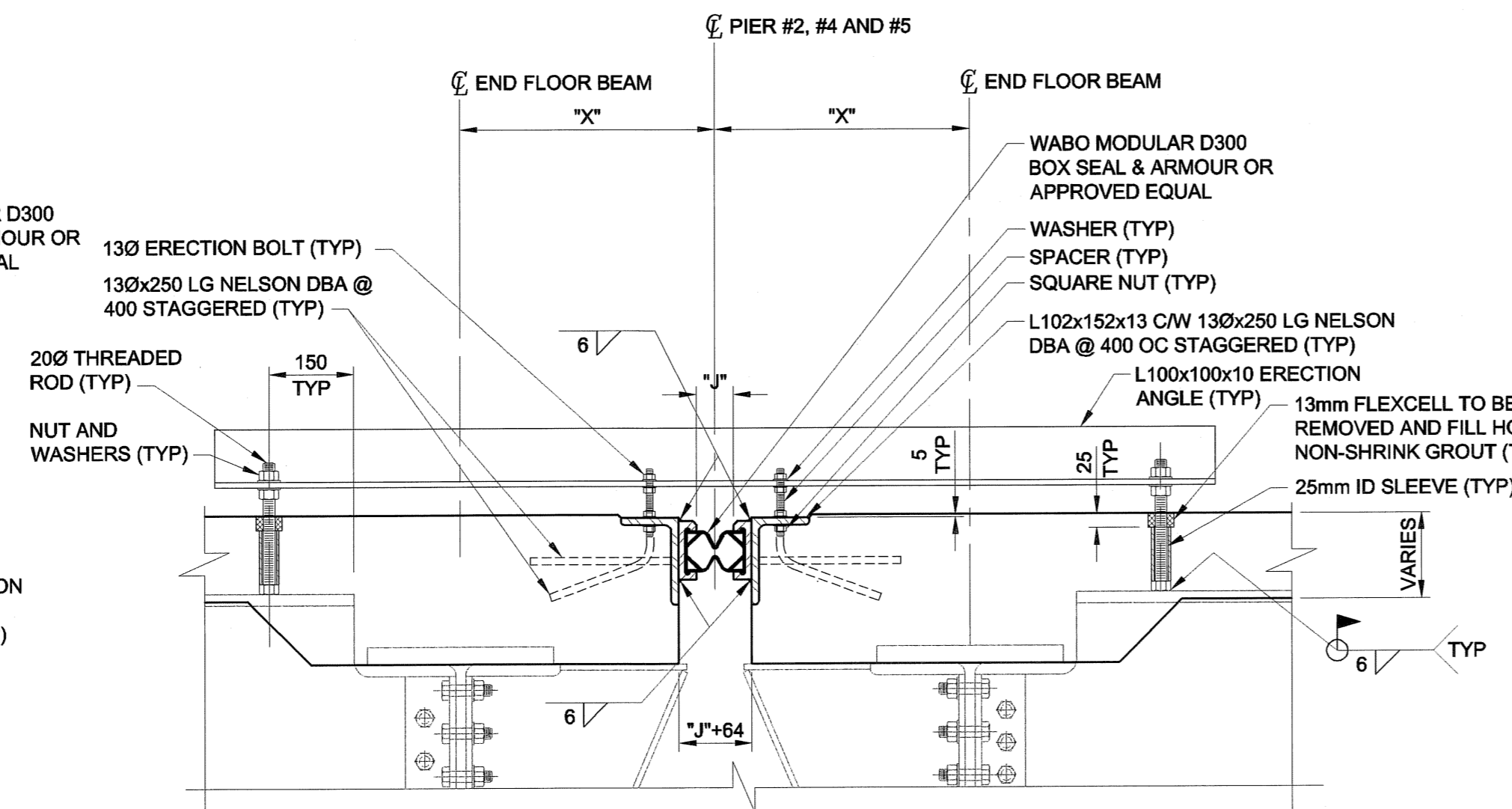
TEMPERATURE WIDTH ADJUSTMENT TABLE FOR EXPANSION JOINTS	
TEMP. °C	DIM. "J"
5°	49
10°	46
15°	44
20°	41
25°	38
MIN.	38
MAX.	80



SECTION A

SCALE 1:10
0 100 200 300 mm

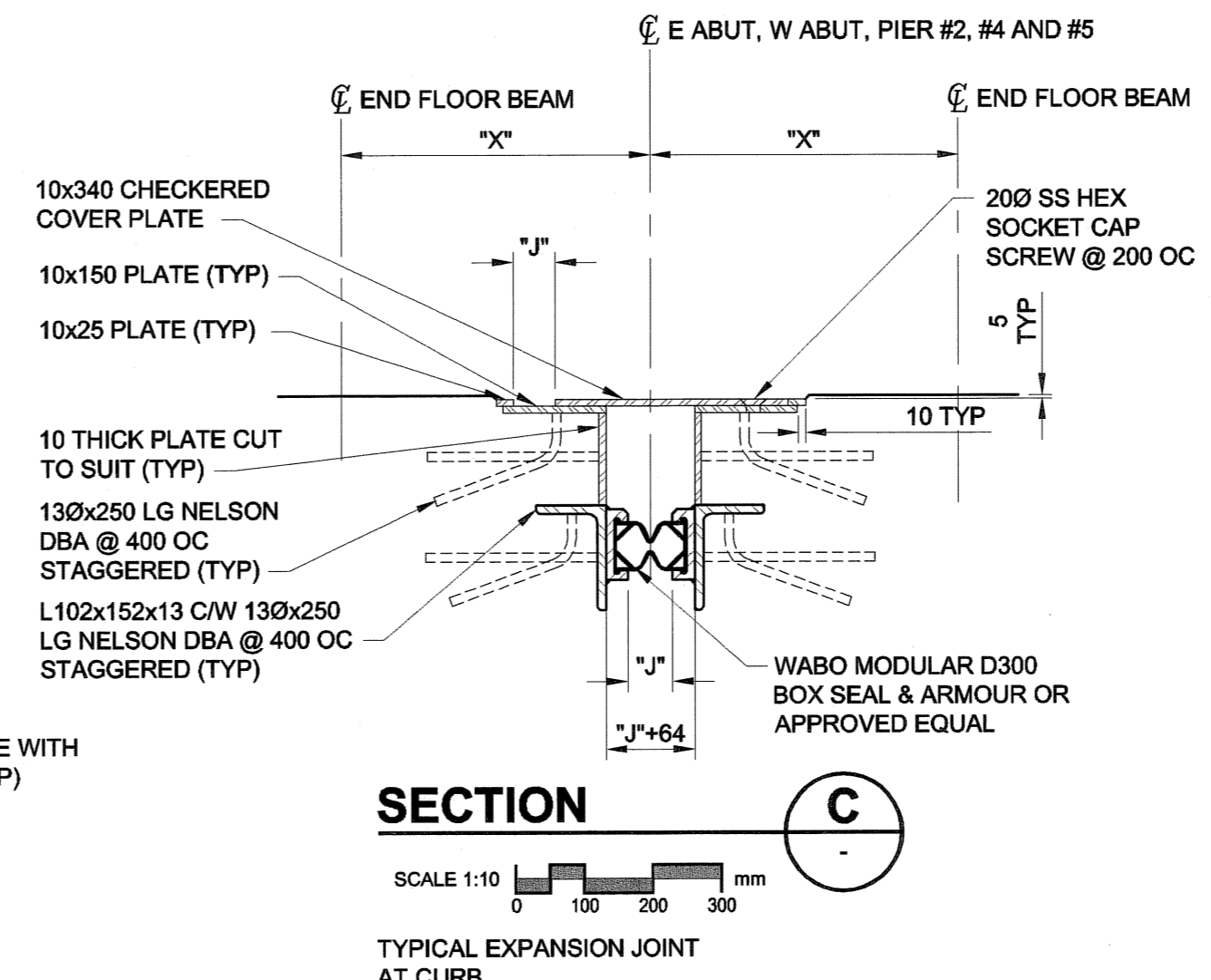
TYPICAL EXPANSION JOINT



SECTION B

SCALE 1:10
0 100 200 300 mm

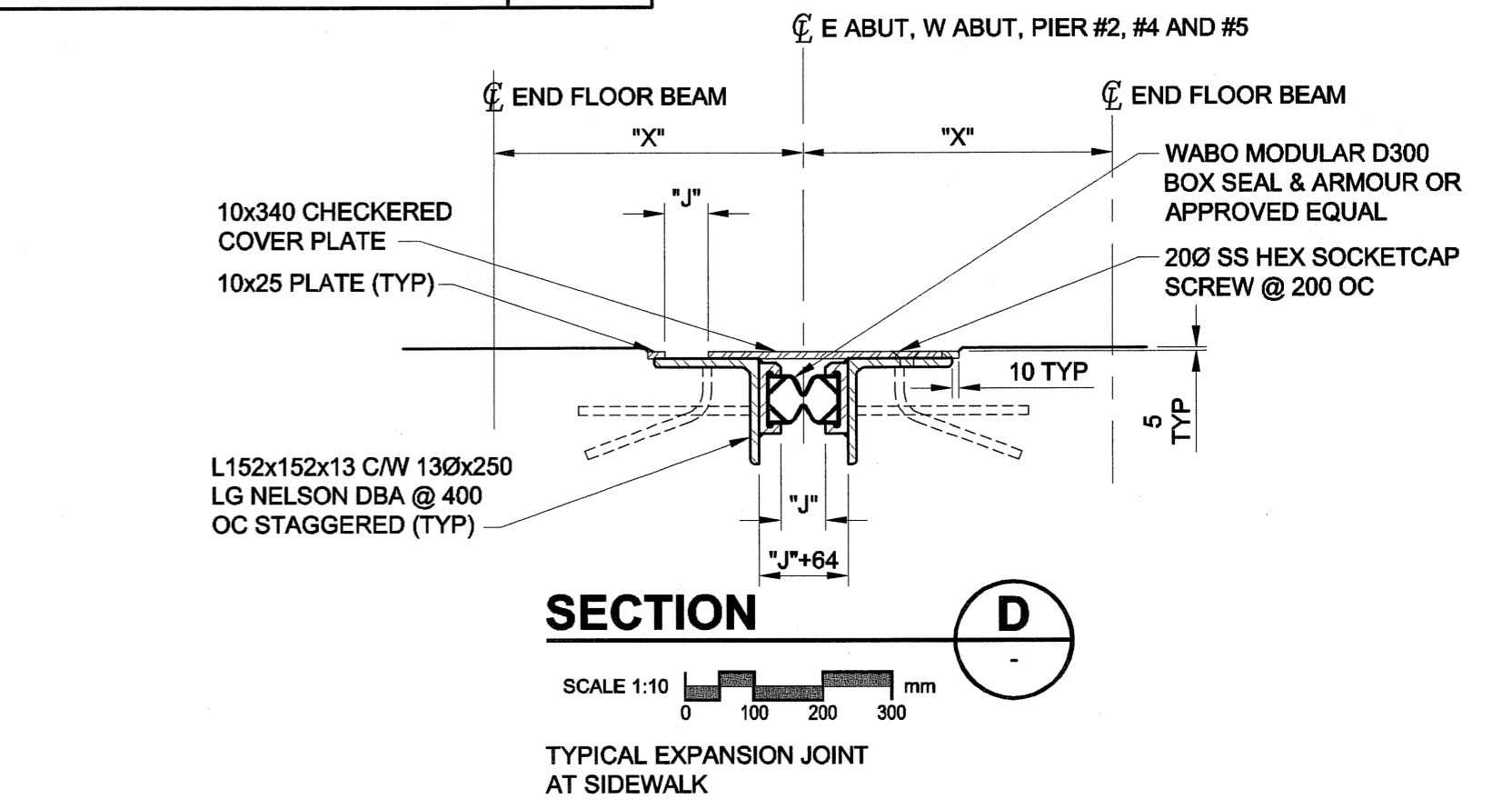
EXPANSION JOINT ASSEMBLY AT ROADWAY



SECTION C

SCALE 1:10
0 100 200 300 mm

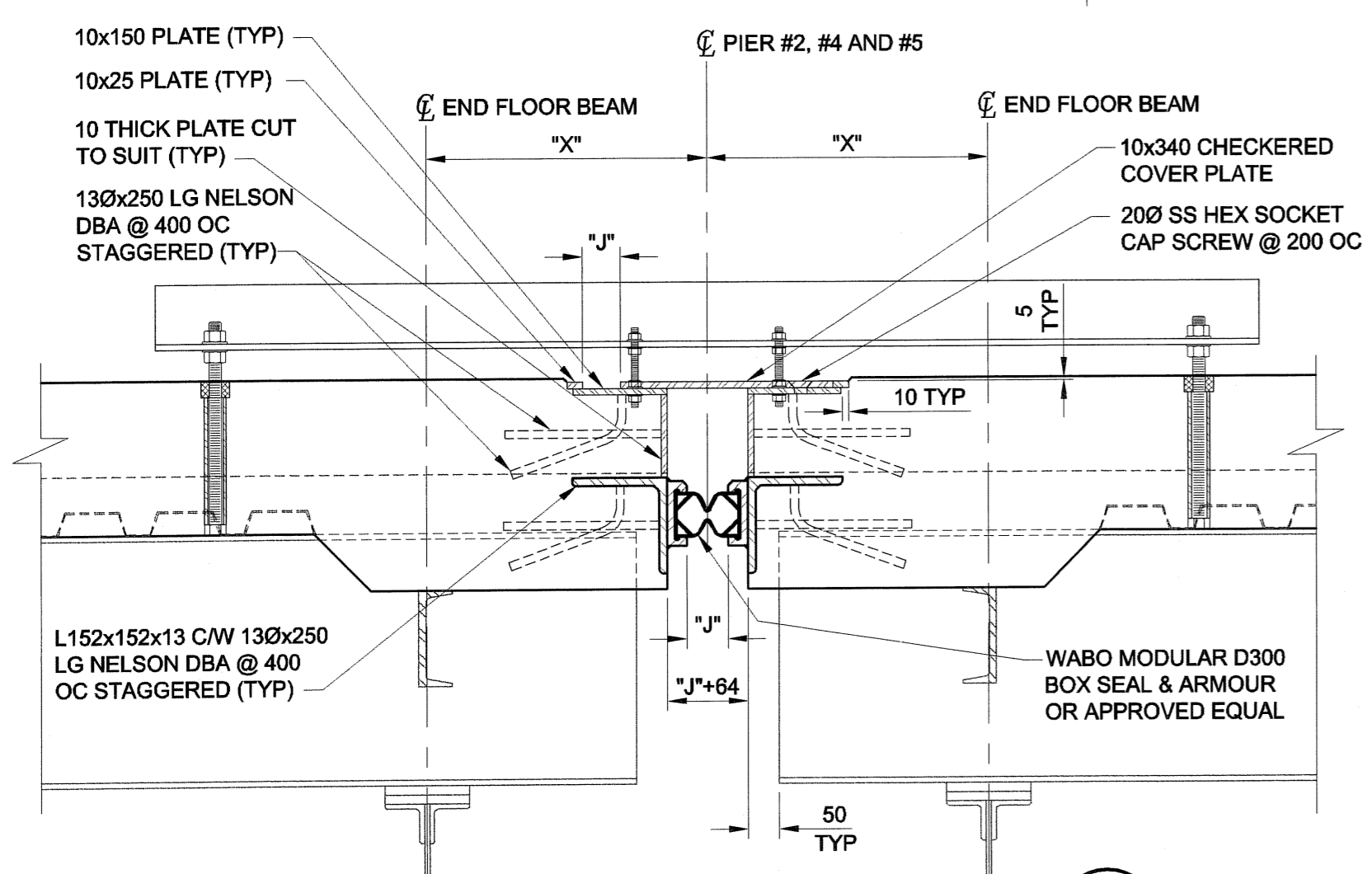
TYPICAL EXPANSION JOINT AT CURB



SECTION D

SCALE 1:10
0 100 200 300 mm

TYPICAL EXPANSION JOINT AT SIDEWALK



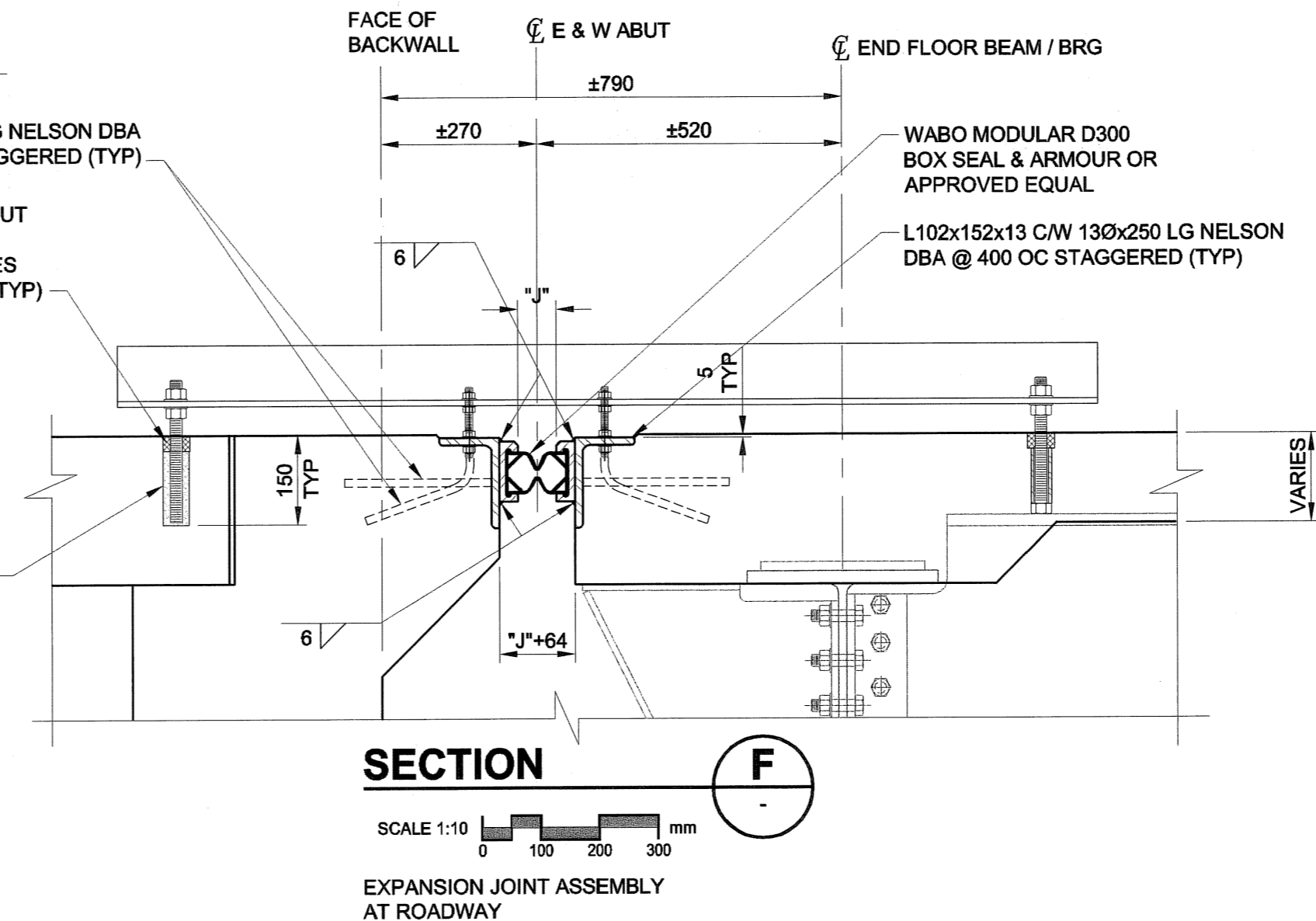
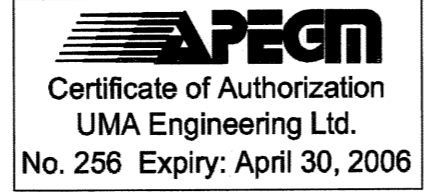
SECTION E

SCALE 1:10
0 100 200 300 mm

TYPICAL EXPANSION JOINT ASSEMBLY AT HANDRAIL CURB

NOTE:
ALL DIMENSIONS SHOWN ON THE DRAWINGS ARE BASED ON AVAILABLE INFORMATION AND RECORD DRAWINGS. THE CONTRACTOR SHALL FIELD MEASURE AND VERIFY ALL DIMENSIONS PRIOR TO COMMENCING CONSTRUCTION OR PRIOR TO PREPARATION OF SHOP DRAWINGS. THE CONTRACTOR SHALL MAKE THE APPROPRIATE ADJUSTMENTS TO THE APPLICABLE DETAILS AND DIMENSIONS ACCEPTABLE TO THE CONTRACT ADMINISTRATOR. THE CONTRACTOR SHALL THEN FABRICATE AND CONSTRUCT THE WORKS IN ACCORDANCE WITH THE CORRECTED DIMENSIONS.

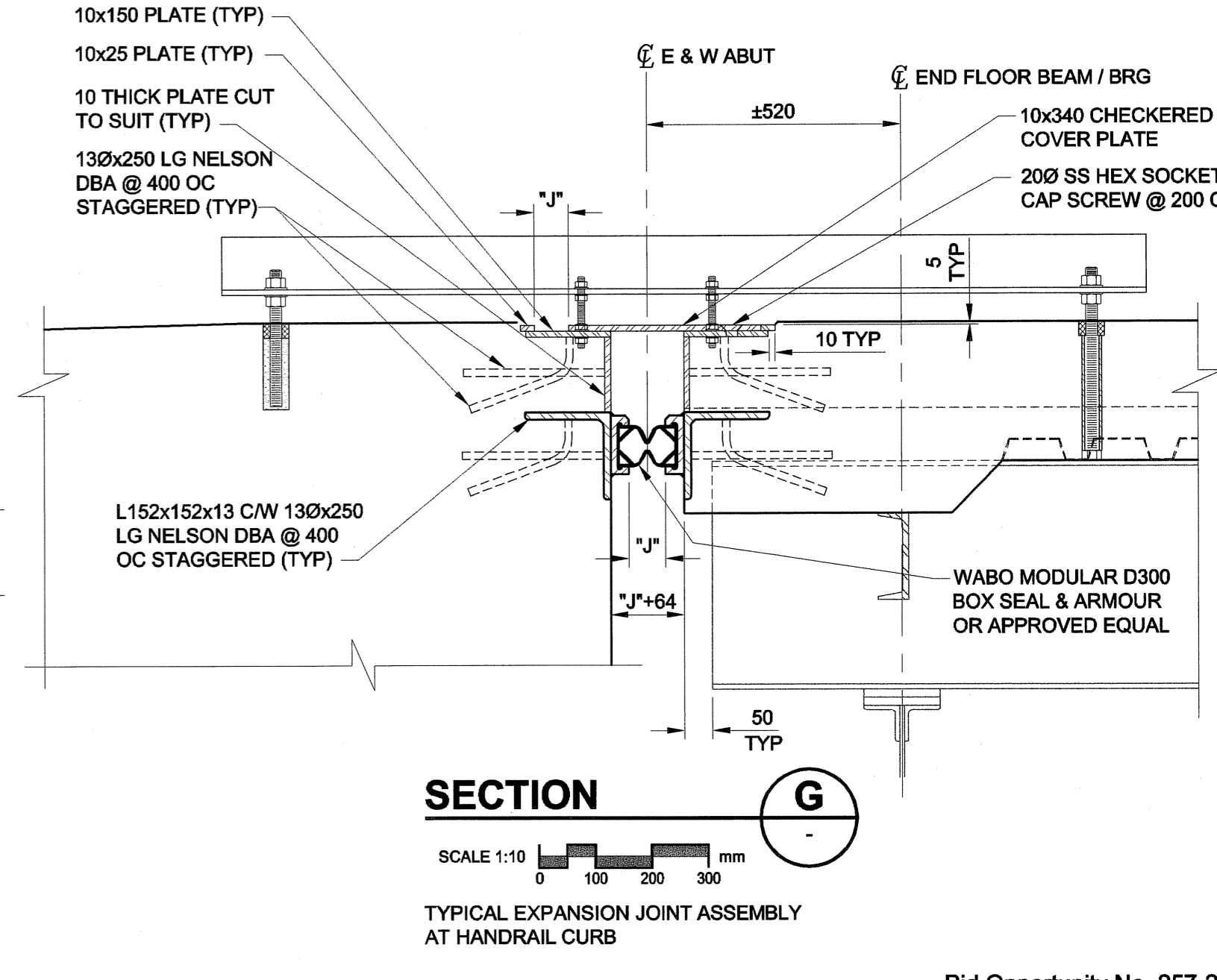
METRIC
WHOLE NUMBERS INDICATE MILLIMETRES
DECIMALIZED NUMBERS INDICATE METRES



SECTION F

SCALE 1:10
0 100 200 300 mm

EXPANSION JOINT ASSEMBLY AT ROADWAY



SECTION G

SCALE 1:10
0 100 200 300 mm

TYPICAL EXPANSION JOINT ASSEMBLY AT HANDRAIL CURB

UMA UMA Engineering Ltd. • Consulting • Engineering • Construction • Management Services		ENGINEER'S SEAL PROVINCE OF MANITOBA B.L. LAU REGISTERED PROFESSIONAL ENGINEER CONSULTANT DRAWING NO. 48 0265-376-00
DESIGNED BY: BLL	CHECKED BY: SBB	ACCEPTED BY: <i>Blair</i> DATE: 2005 07 27
DRAWN BY: CGC	APPROVED BY: <i>Blair</i>	
HOR. SCALE: AS SHOWN	VERT. SCALE: AS SHOWN	
0 ISSUED FOR CONSTRUCTION 05/07/05 MP	NO. REVISIONS: YYMMDD BY:	

THE CITY OF WINNIPEG PUBLIC WORKS DEPARTMENT

REDWOOD BRIDGE REHABILITATIVE MAINTENANCE AND RELATED WORKS

EXPANSION JOINT DETAILS

CITY DRAWING NUMBER: B113-05-48
SHEET: 48 OF 74
REV: 48 0

Bid Opportunity No. 257-2005