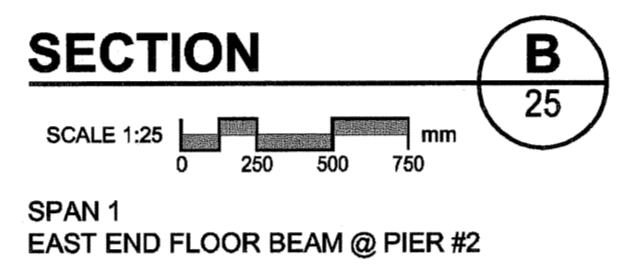
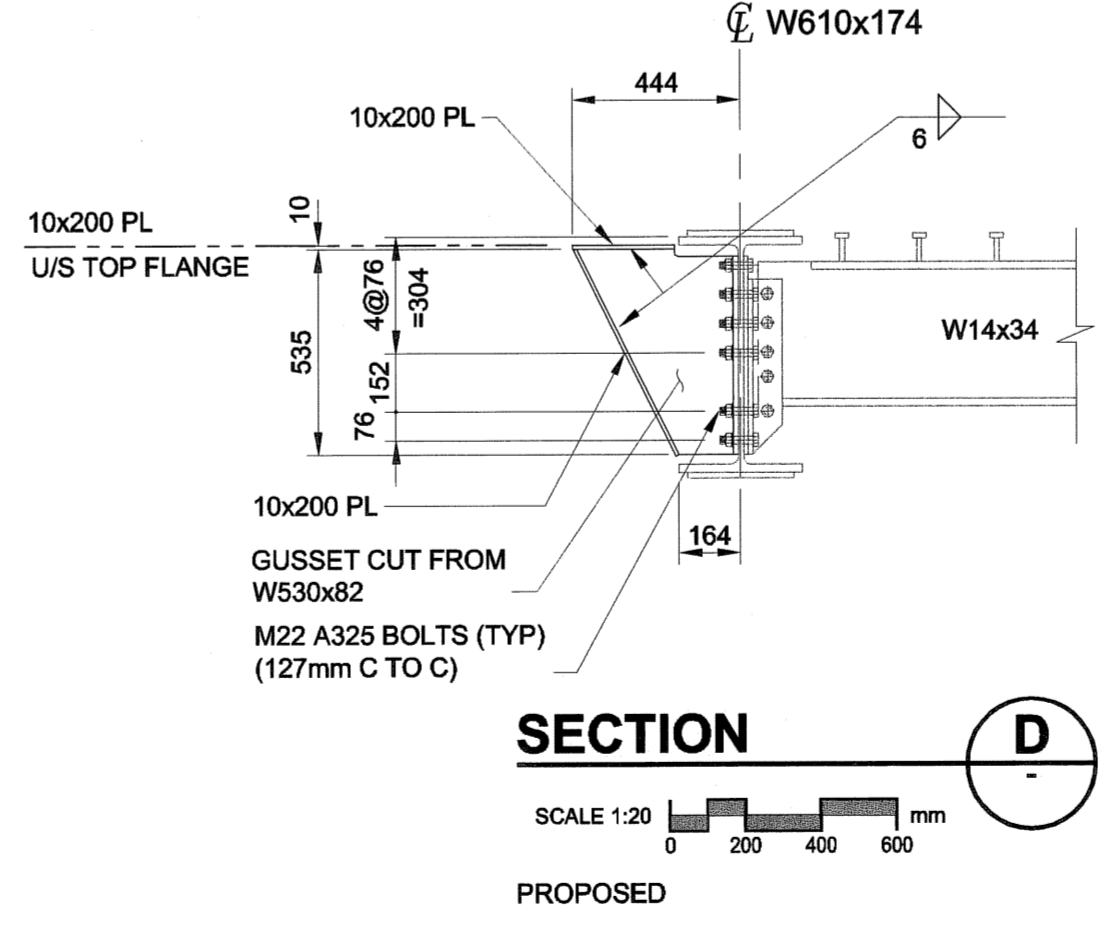
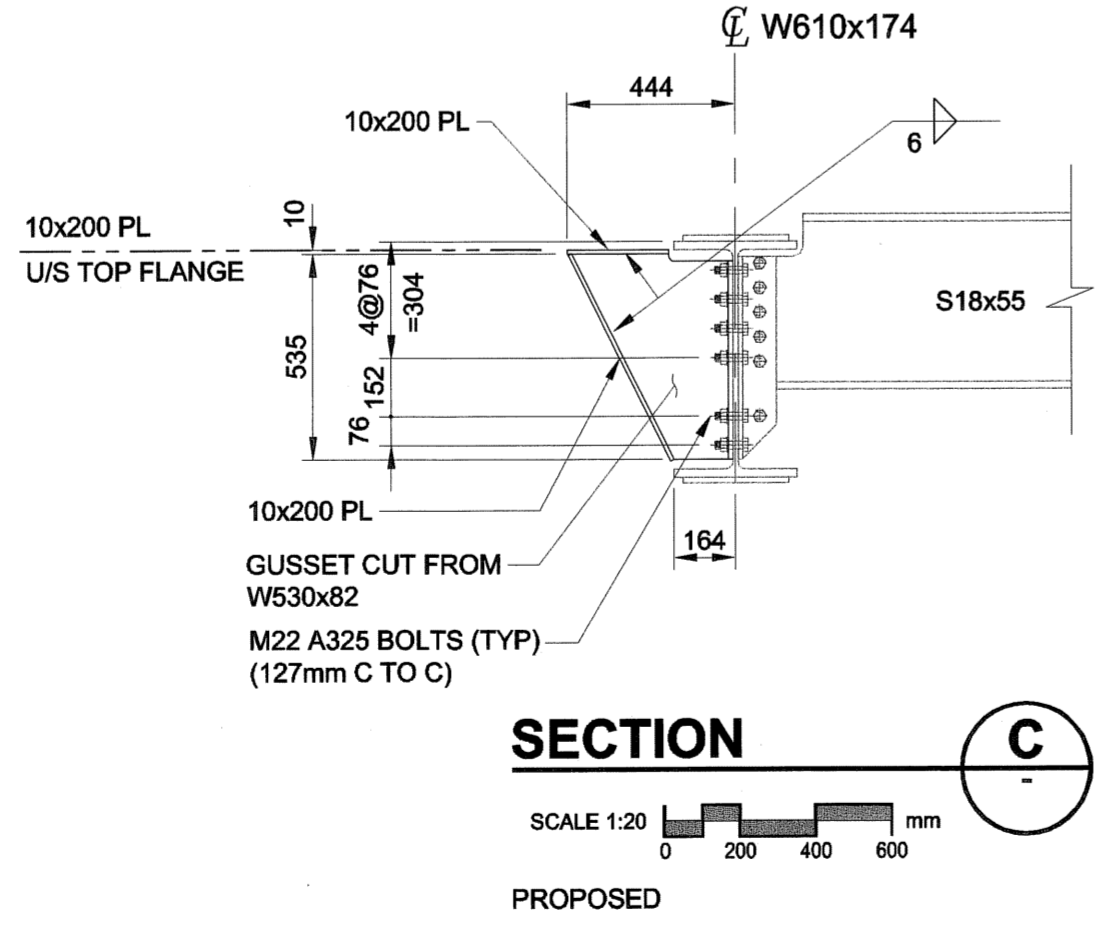
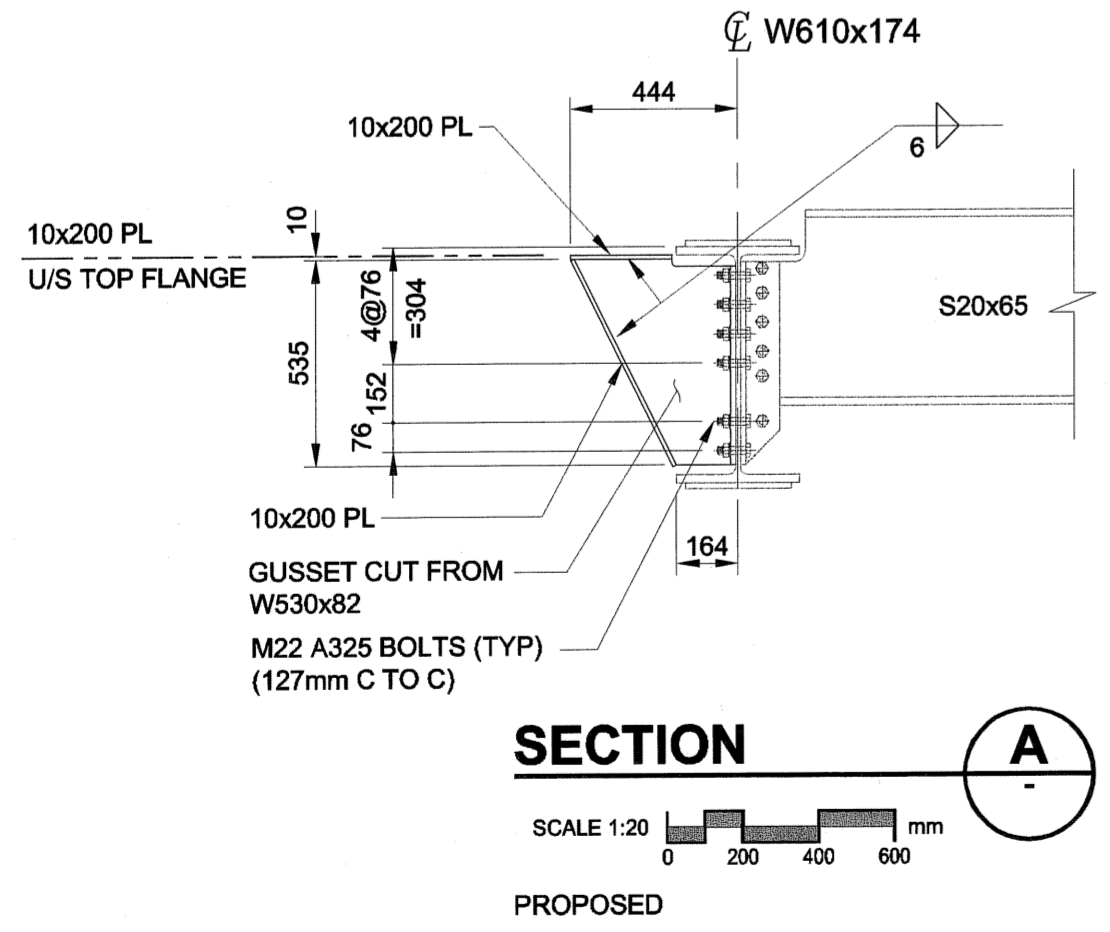
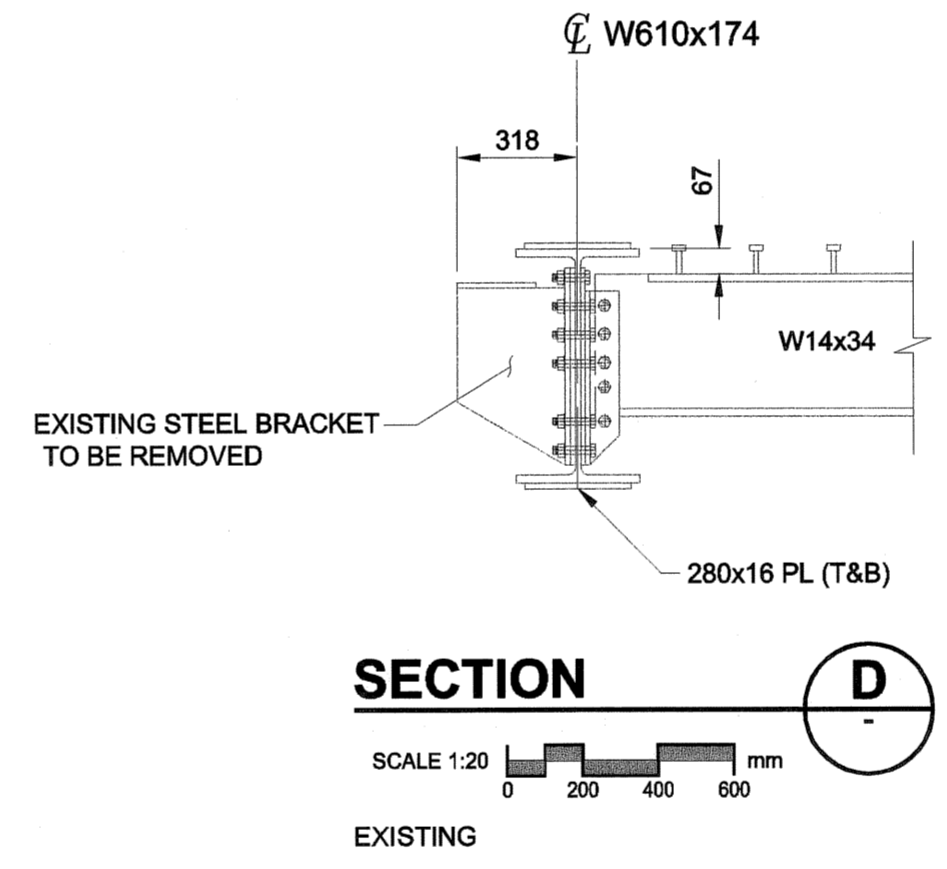
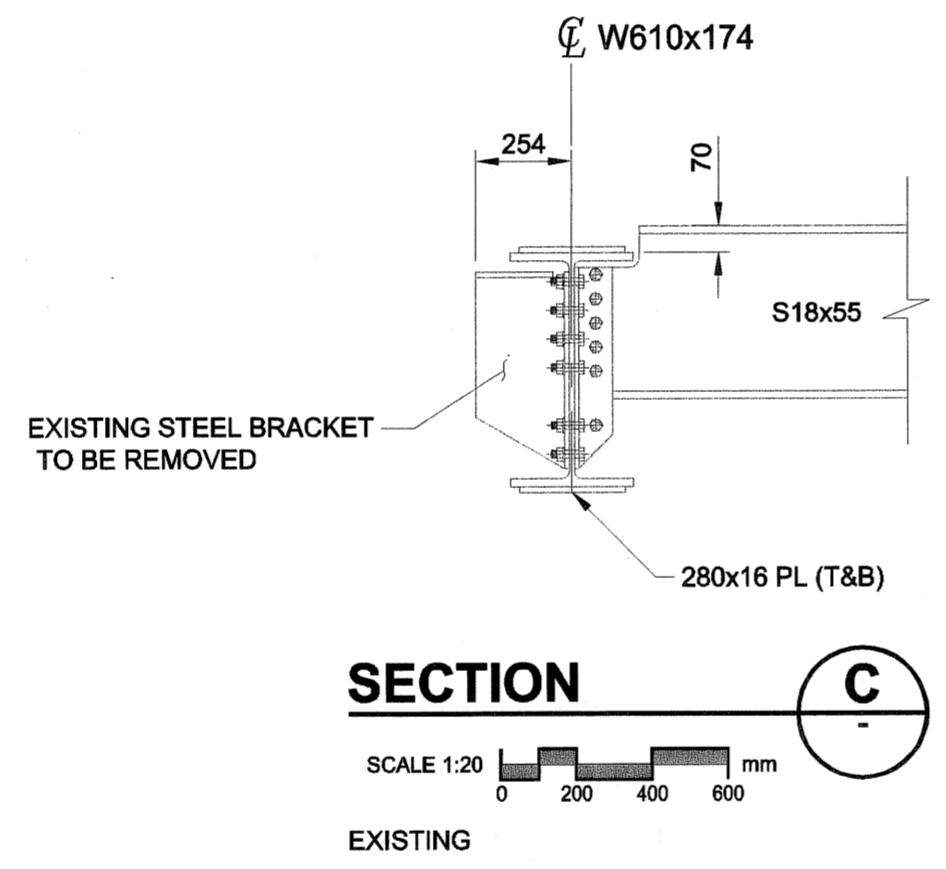
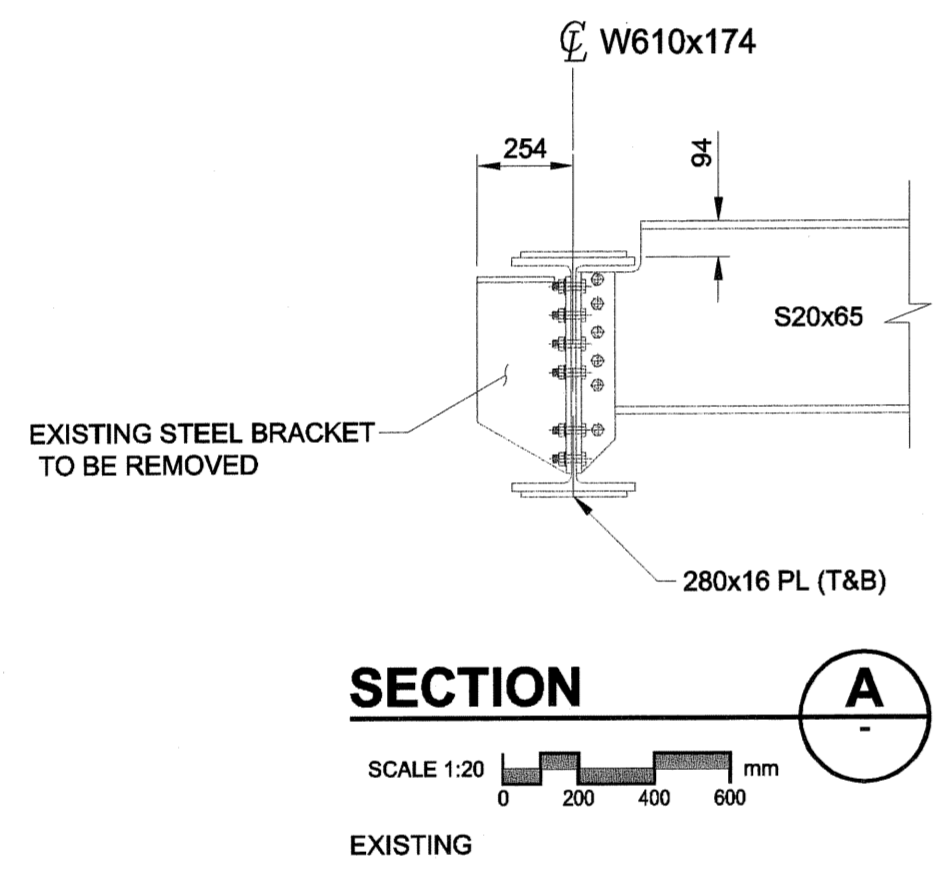


NOTE:
FOR PROPOSED SIDEWALK BRACKET SEE DWG 34.

PROPOSED

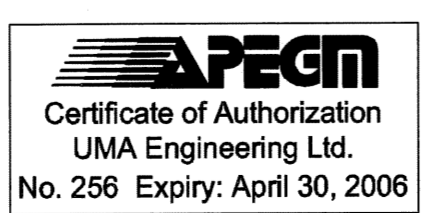


EXISTING

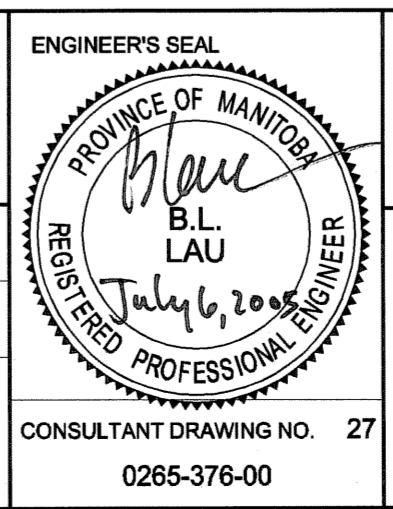


NOTE:
ALL DIMENSIONS SHOWN ON THE DRAWINGS ARE BASED ON AVAILABLE INFORMATION AND RECORD DRAWINGS. THE CONTRACTOR SHALL FIELD MEASURE AND VERIFY ALL DIMENSIONS PRIOR TO COMMENCING CONSTRUCTION OR PRIOR TO PREPARATION OF SHOP DRAWINGS. THE CONTRACTOR SHALL MAKE THE APPROPRIATE ADJUSTMENTS TO THE APPLICABLE DETAILS AND DIMENSIONS ACCEPTABLE TO THE CONTRACT ADMINISTRATOR. THE CONTRACTOR SHALL THEN FABRICATE AND CONSTRUCT THE WORKS IN ACCORDANCE WITH THE CORRECTED DIMENSIONS.

METRIC
WHOLE NUMBERS INDICATE MILLIMETRES
DECIMALIZED NUMBERS INDICATE METRES



| | |
|--|---------------------------------|
| UMA UMA Engineering Ltd. • Consulting • Engineering • Construction • Management Services | |
| DESIGNED BY: BLL | CHECKED BY: SBB |
| DRAWN BY: JJA | APPROVED BY: <i>[Signature]</i> |
| HOR. SCALE: AS SHOWN | ACCEPTED BY: <i>[Signature]</i> |
| VERT. SCALE: AS SHOWN | DATE: 2005 07 07 |
| ISSUED FOR CONSTRUCTION: 05/07/05 MP | |
| NO. REVISIONS: YYMMDD BY | |



THE CITY OF WINNIPEG PUBLIC WORKS DEPARTMENT

REDWOOD BRIDGE REHABILITATIVE MAINTENANCE AND RELATED WORKS

BRIDGE SECTION - SPAN 1 EAST END FLOOR BEAM DETAILS

CITY DRAWING NUMBER: B113-05-27
SHEET 27 OF 74
REV 27 0

CONSULTANT DRAWING NO. 27
265-376-00