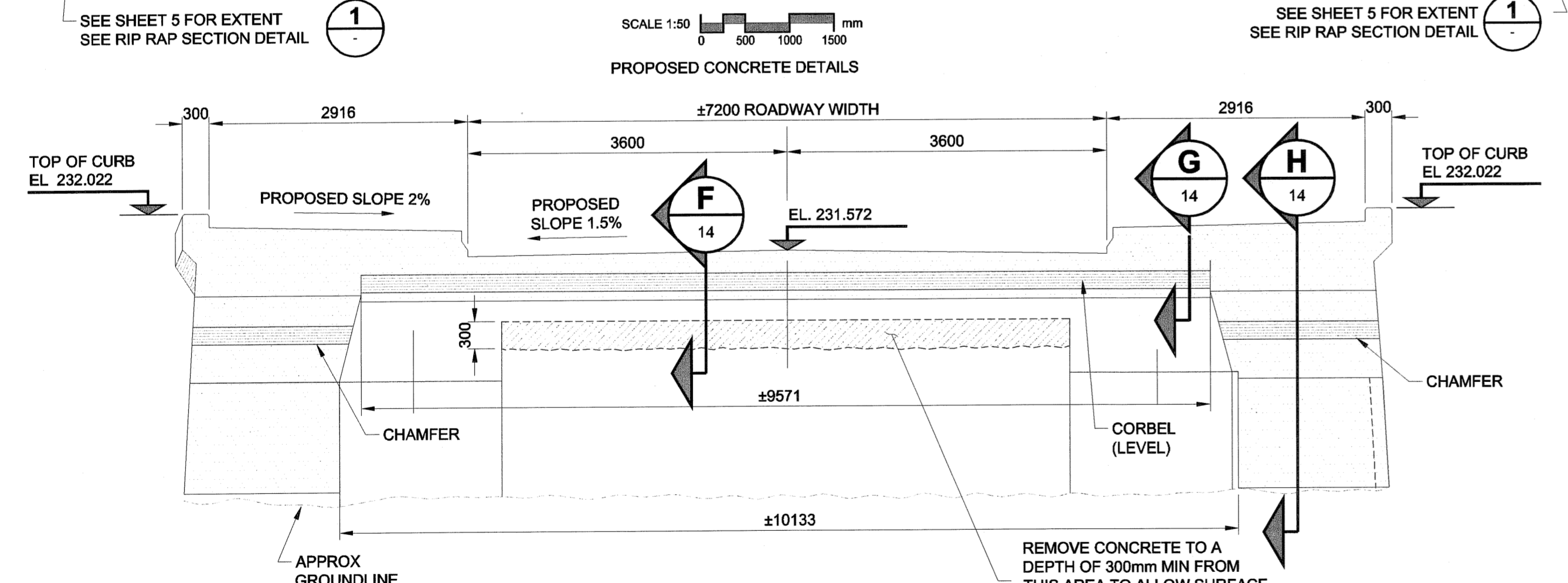


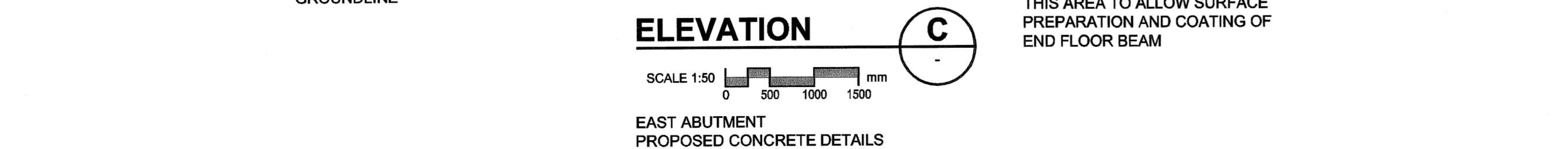
EAST ABUTMENT PLAN

SCALE 1:50



ELEVATION C

SCALE 1:50

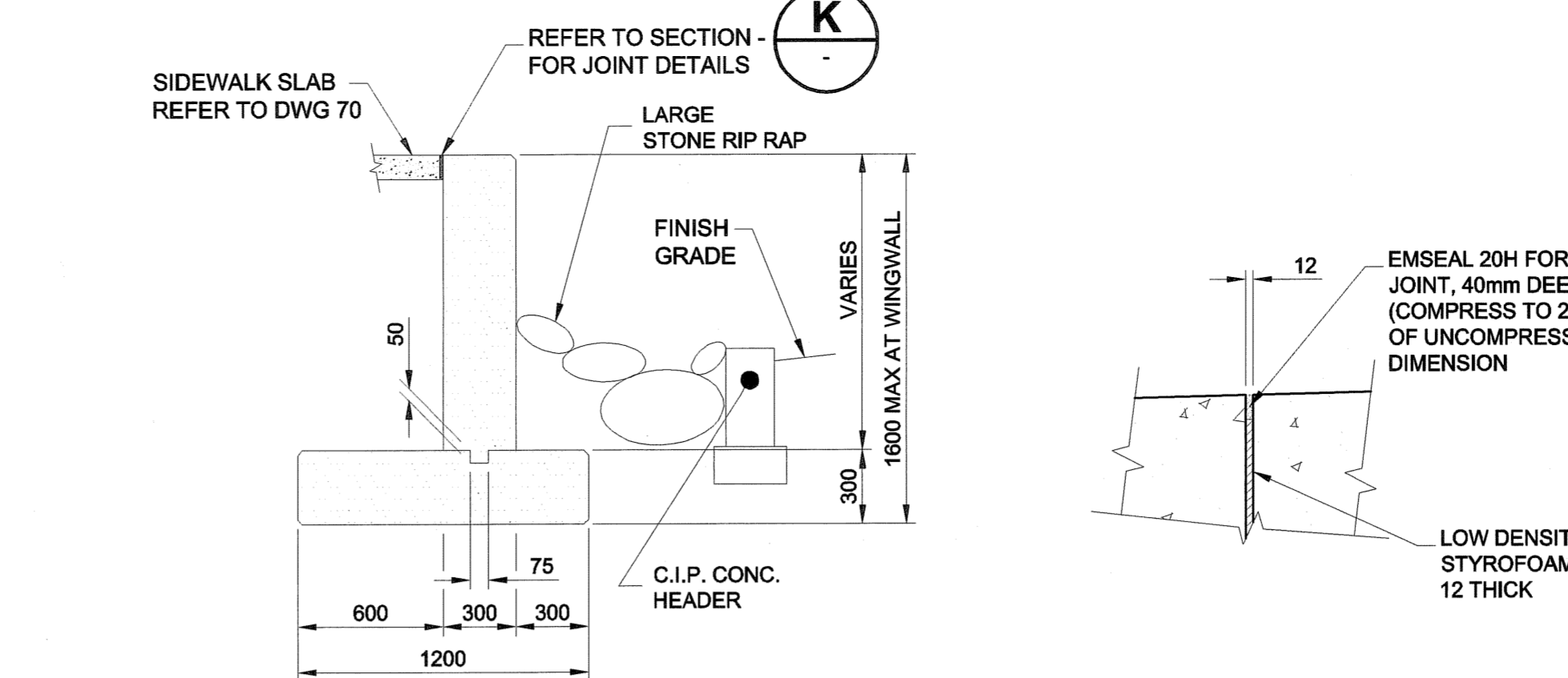


REMOVE CONCRETE TO A DEPTH OF 300mm FROM THIS AREA TO ALLOW SURFACE PREPARATION AND COATING OF END FLOOR BEAM

NOTE:
ALL DIMENSIONS SHOWN ON THE DRAWINGS ARE BASED ON AVAILABLE INFORMATION AND RECORD DRAWINGS. THE CONTRACTOR SHALL FIELD MEASURE AND VERIFY ALL DIMENSIONS PRIOR TO COMMENCING CONSTRUCTION OR PRIOR TO PREPARATION OF SHOP DRAWINGS. THE CONTRACTOR SHALL MAKE THE APPROPRIATE ADJUSTMENTS TO THE APPLICABLE DETAILS AND DIMENSIONS ACCEPTABLE TO THE CONTRACT ADMINISTRATOR. THE CONTRACTOR SHALL THEN FABRICATE AND CONSTRUCT THE WORKS IN ACCORDANCE WITH THE CORRECTED DIMENSIONS.

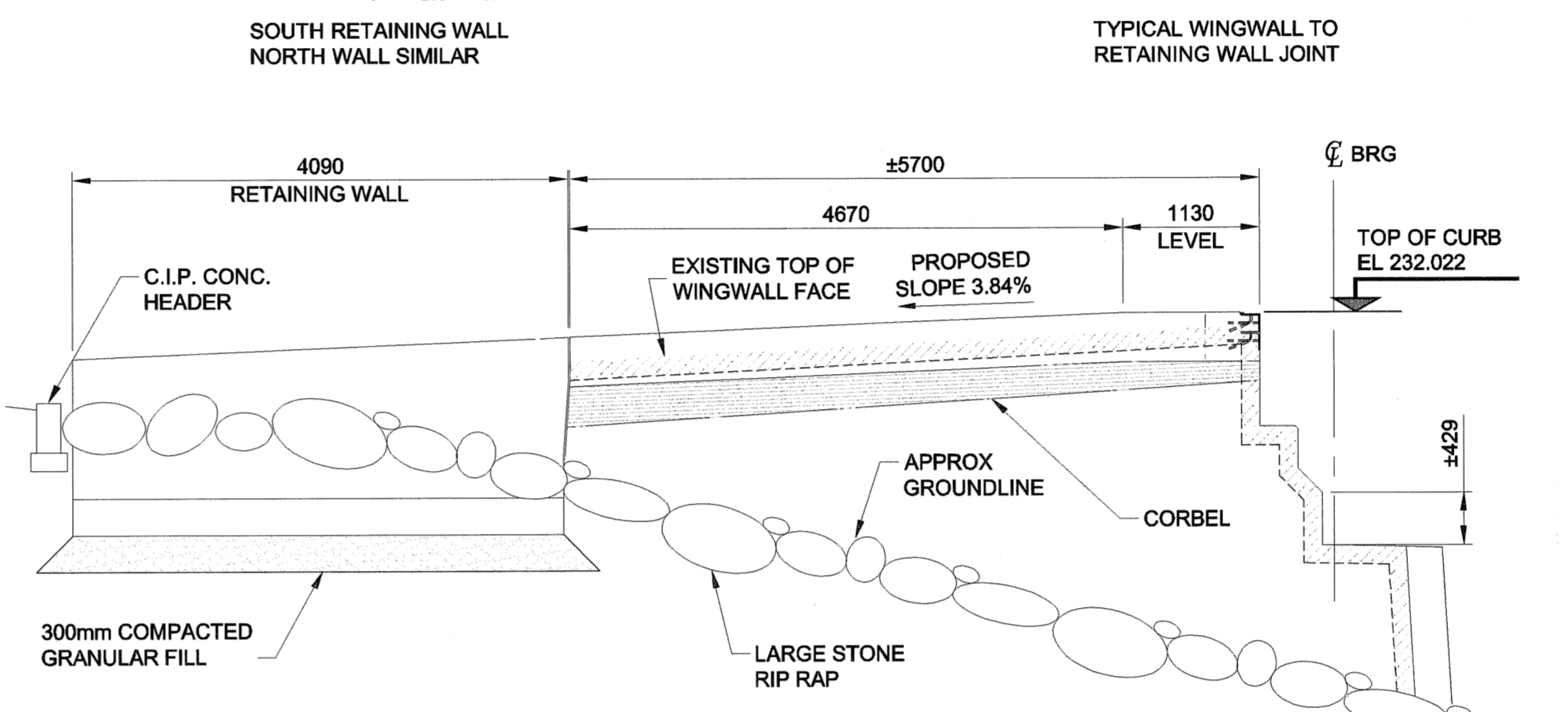
METRIC
WHOLE NUMBERS INDICATE MILLIMETRES
DECIMALIZED NUMBERS INDICATE METRES

APEGM
Certificate of Authorization
UMA Engineering Ltd.
No. 256 Expiry: April 30, 2006



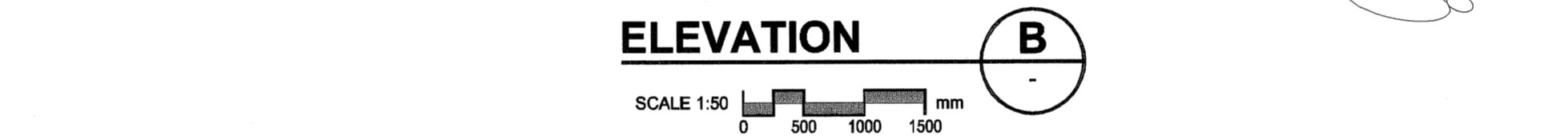
SECTION J

SCALE 1:25



SECTION K

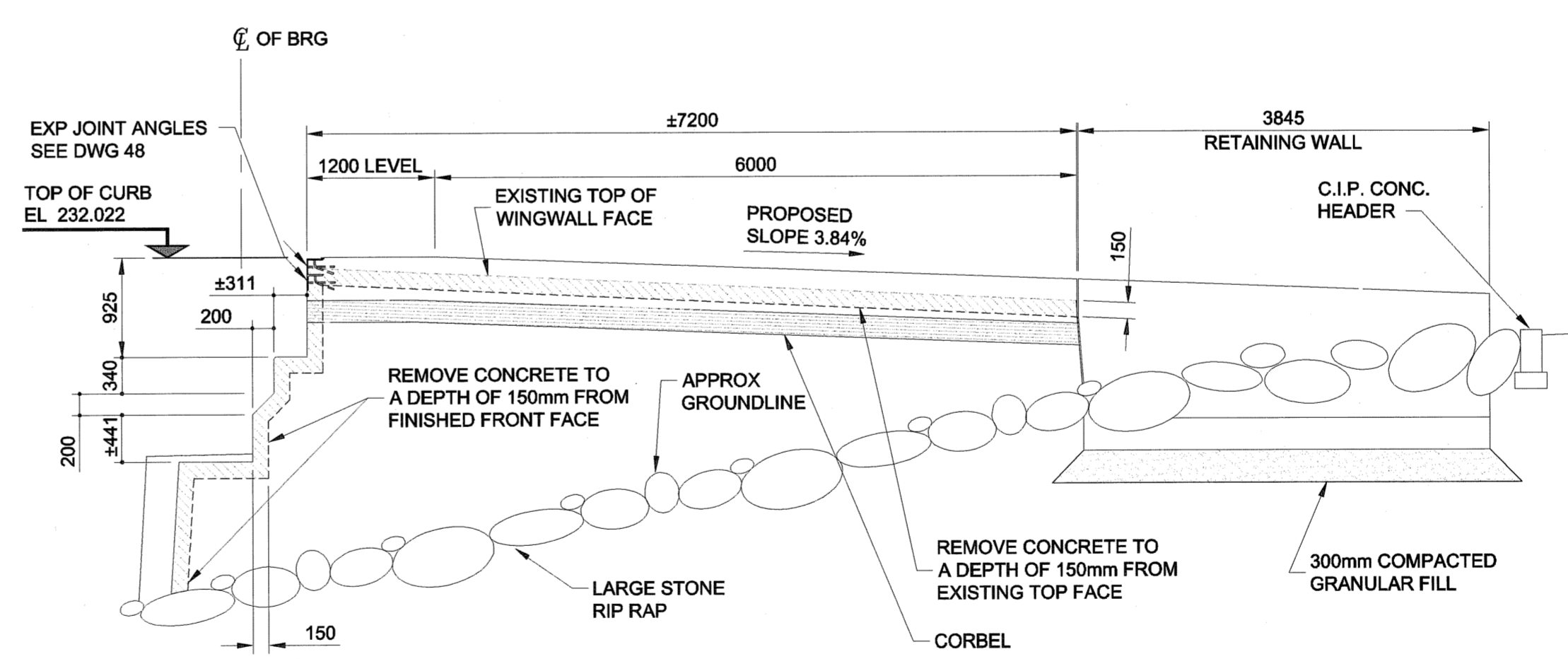
SCALE 1:10



ELEVATION B

SCALE 1:50

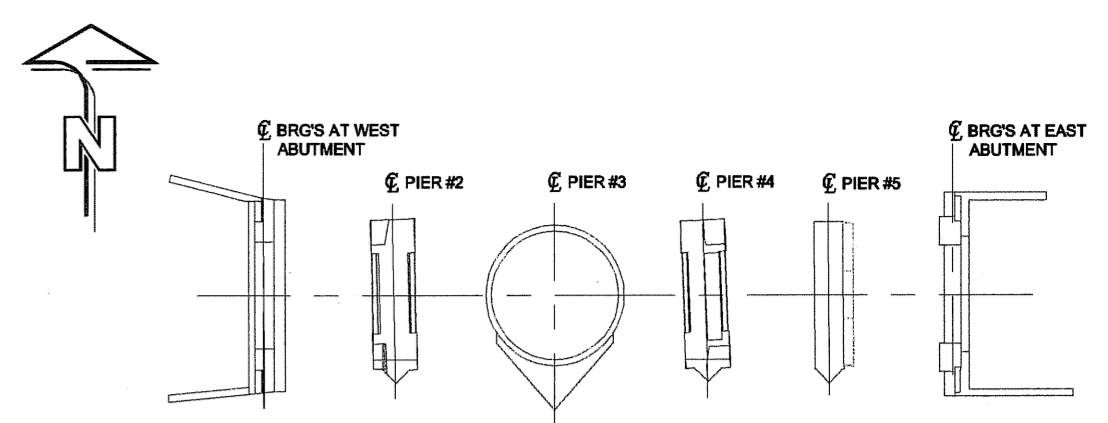
NORTH WINGWALL PROPOSED CONCRETE DETAILS DETAILS THE SAME AS SOUTH WINGWALL UNLESS NOTED.



ELEVATION A

SCALE 1:50

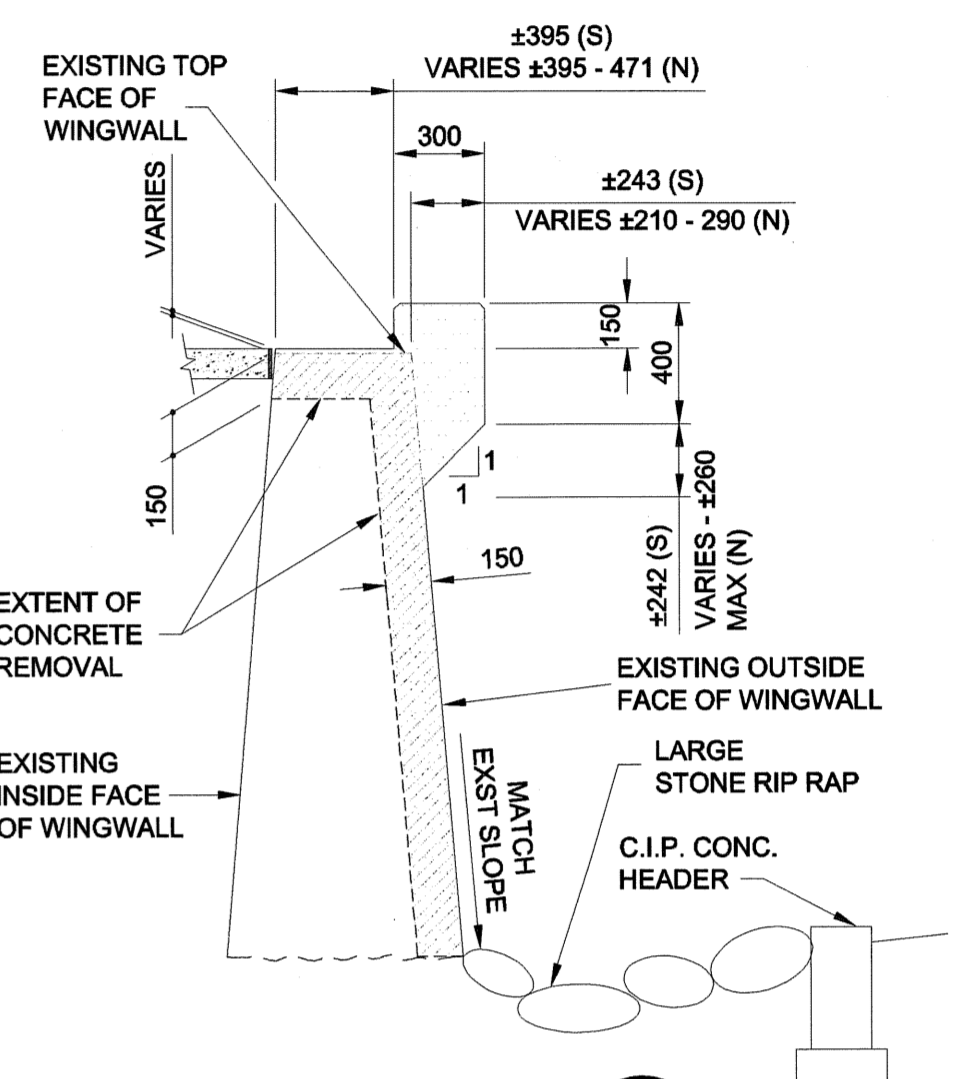
SOUTH WINGWALL PROPOSED CONCRETE DETAILS



KEY PLAN

SCALE 1:500

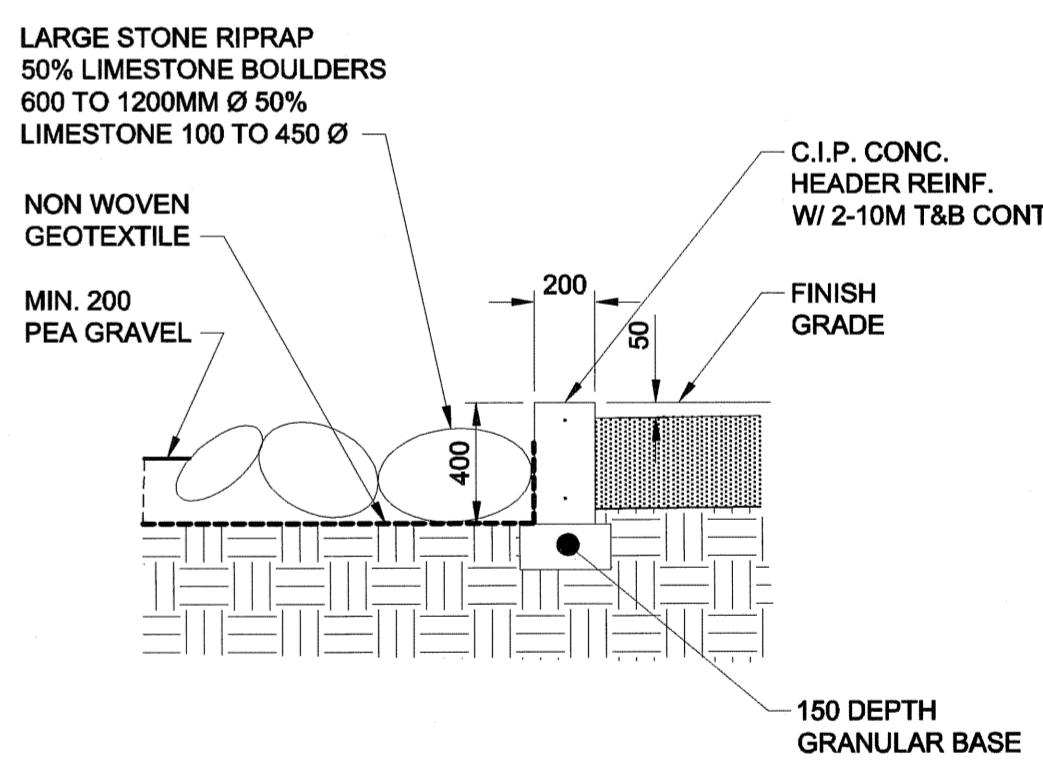
SUBSTRUCTURE - ABUTMENTS & PIERS



SECTION D

SCALE 1:25

SOUTH WINGWALL SECTION CONCRETE LAYOUT NORTH WINGWALL SIMILAR



RIP RAP SECTION DETAIL 1

SCALE NTS

UMA Engineering Ltd. • Consulting • Engineering • Construction • Management Services		ENGINEER'S SEAL PROVINCE OF MANITOBA B.L. LAU REGISTERED PROFESSIONAL ENGINEER July 6, 2005 CONSULTANT DRAWING NO. 12 0265-376-00	
DESIGNED BY: BLL	CHECKED BY: SBB	APPROVED BY: BUB	ACCEPTED BY: [Signature]
DRAWN BY: DL	HOR. SCALE: AS SHOWN	VERT. SCALE: AS SHOWN	DATE: 2005 07 07
ISSUED FOR CONSTRUCTION	05/07/05	MP	
NO. REVISIONS	YYMMDD	BY	

THE CITY OF WINNIPEG PUBLIC WORKS DEPARTMENT

REDWOOD BRIDGE REHABILITATIVE MAINTENANCE AND RELATED WORKS

EAST ABUTMENT LAYOUT PROPOSED CONCRETE PLAN, ELEVATIONS, SECTIONS AND DETAILS

CITY DRAWING NUMBER: B113-05-12
SHEET 12 OF 74
REV 12 0