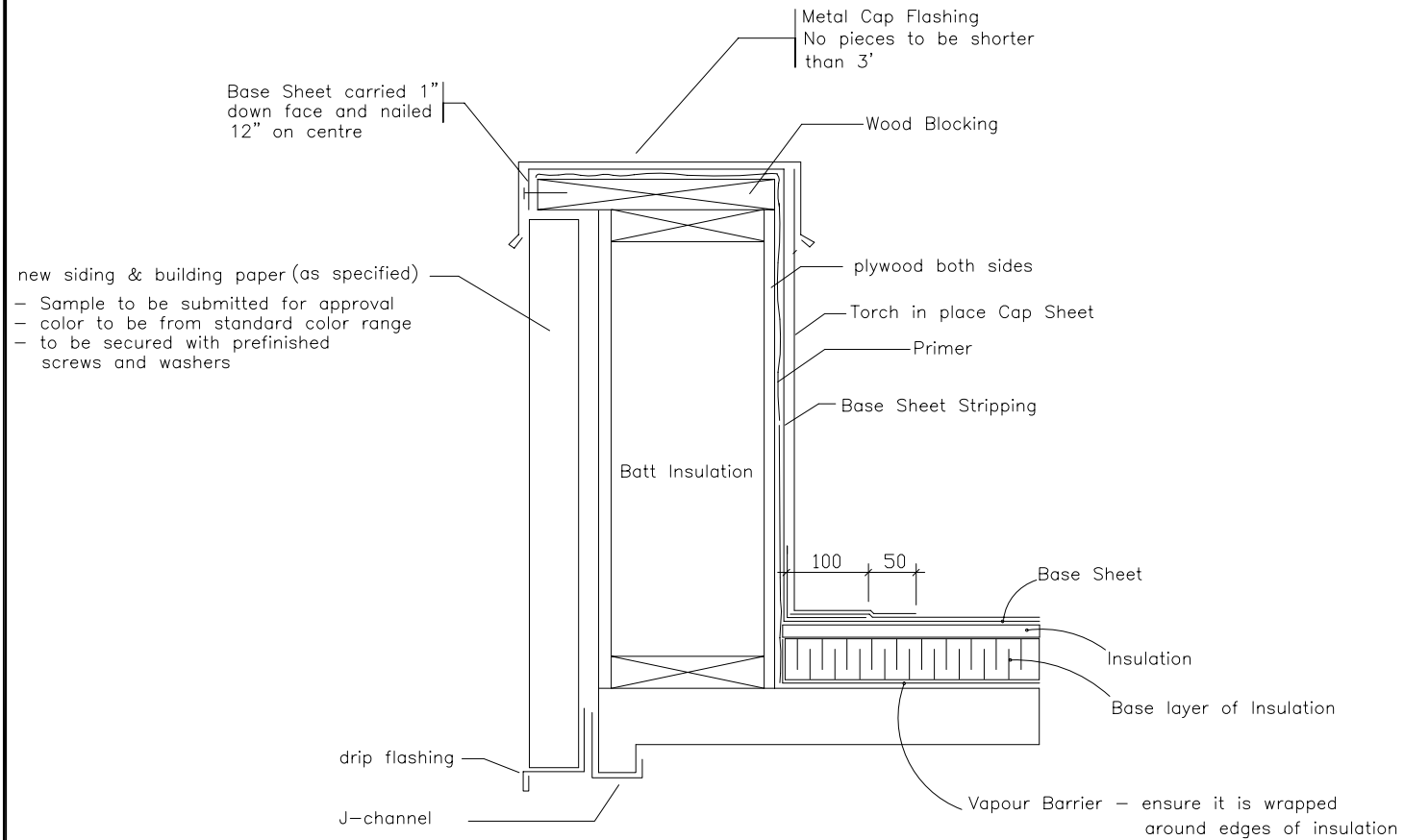
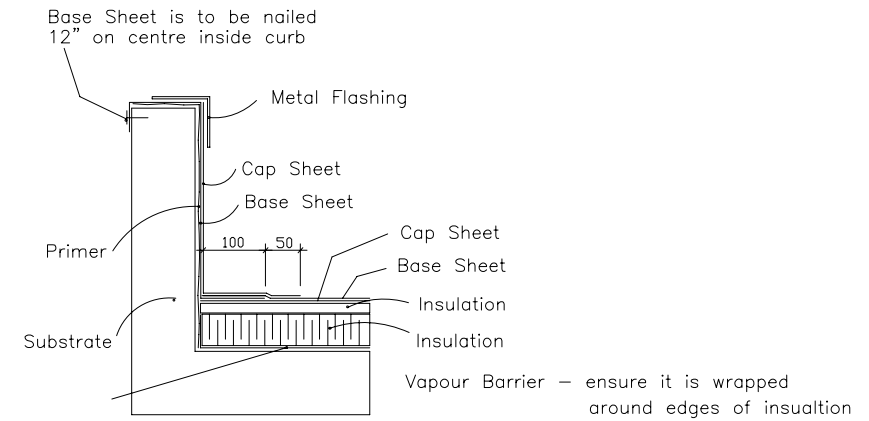


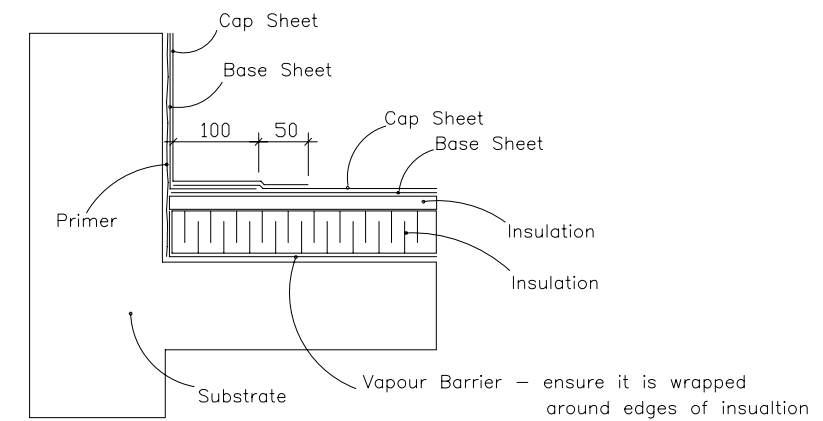
# Typical Parapet Construction



# Mechanical Curb Flashing



# Typical Roof Edge Detail



Note: Details are to be similar for inverted roof assemblies

<b>AGASSIZ CONSULTING GROUP</b>	
809 Pipeline Road, Winnipeg, Manitoba Phone: 697-8091 Fax: 697-8039	
Project:	William Osler Wading Pool 787 Brock Street Winnipeg, MB
Date:	June 6, 2005
Drawing No.	D-1
File no:	3745-05
Scale:	N.T.S.