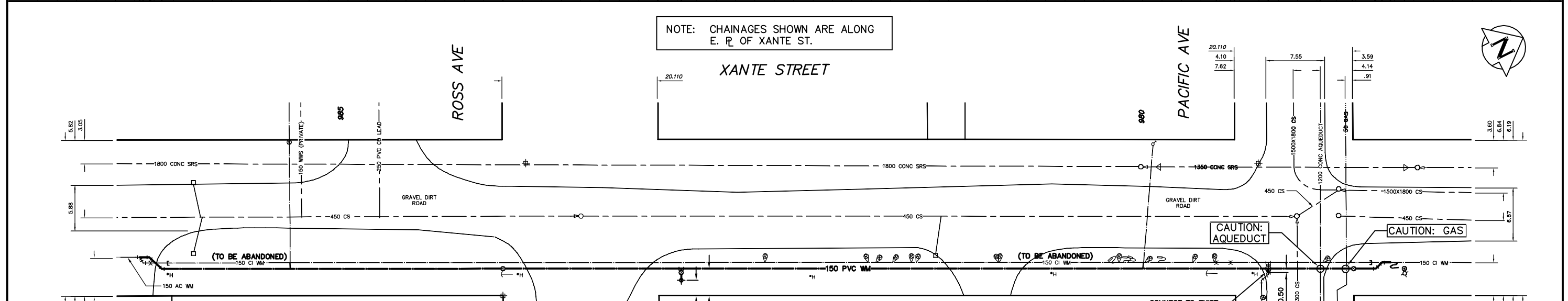


NOTE: CHAINAGES SHOWN ARE ALONG E. R. OF XANTE ST.



- CONSTRUCTION NOTES**
1. EXPOSE EXISTING WATERMAIN & CONFIRM INVERTS PRIOR TO CONSTRUCTION.
 2. CONFIRM LOCATION OF ALL SERVICES IN THE FIELD.
 3. INSTALL WATERMAIN BY TRENCHLESS METHODS.
 4. TRENCHES AND EXCAVATIONS WITHIN 1 METRE OF A PAVED AREA INCLUDING SIDEWALKS SHALL BE CLASS 3 BACKFILL.
 5. ALL MATERIALS SHALL CONFORM TO THE CITY OF WINNIPEG STANDARD CONSTRUCTION SPECIFICATIONS.
 6. MINIMUM COVER TO TOP OF WATERMAIN SHALL BE 2.4 m.
 7. REPLACE ALL EXISTING LEAD SERVICES FROM PROPOSED WATERMAIN TO R.
 8. NOTIFY ALL AFFECTED RESIDENTS AND BUSINESSES 24 HOURS IN ADVANCE OF ANY WATER SHUTDOWNS OR DISRUPTION OF SERVICE.

WATER SERVICE INFORMATION

ADDRESS	SIZE(mm) & TYPE	SIZE(mm) & TYPE (PROP)	SHORT & LONG MEASUREMENT	CORP. LOCATION	REMARKS
965 PACIFIC AVE	25 COPPER	25 COPPER	6.10 EWL BLDG	1.07 W OF S/C	SERV. OFF PACIFIC
980 PACIFIC AVE	25 COPPER	25 COPPER	1.07 EEL XANTE	1.22 S OF S/C	SERV. OFF XANTE
1000 ARLINGTON ST	25 COPPER	25 COPPER	10.67 SSL PACIFIC	OPP S/C	SERV. OFF PACIFIC
1000 ARLINGTON ST	25 COPPER	25 COPPER	12.50 SNL BLDG	OPP S/C	SERV. OFF XANTE
1060 ARLINGTON ST	25 COPPER	25 COPPER	18.29 NNL PACIFIC	0.30 S OF S/C	SERV. OFF ARLINGTON
1060 ARLINGTON ST	100	100	17.68 PACIFIC CURB	OPP VALVE	SERV. OFF PACIFIC
1038 ARLINGTON ST	25 COPPER	25 COPPER	14.00 SNL BLDG	0.80 N OF S/C	SERV. OFF ARLINGTON
1038 ARLINGTON ST	25 COPPER	25 COPPER	53.34 WML ARLINGTON	OPP S/C	SERV. OFF ARLINGTON
985 ELGIN AVE	25 COPPER	25 COPPER	3.96 SNL BLDG	OPP S/C	SERV. OFF ELGIN
INDUSTRIAL	25 COPPER	25 COPPER	71.32 NNL ELGIN	OPP S/C	SERV. OFF ELGIN

*SERVICES TO BE RENEWED TO R. ALL OTHERS TO BE RECONNECTED

METRIC
WHOLE NUMBERS INDICATE MILLIMETRES
DECIMALIZED NUMBERS INDICATE METRES
NOTE: ALL VALVES TO BE INSTALLED COUNTERCLOCKWISE TO CLOSE

WARNING
IF POWER EQUIPMENT OR EXPLOSIONS ARE TO BE USED FOR EXCAVATION ON THIS PROJECT THE CONTRACTOR MUST:
1) NOTIFY THE GAS COMPANY OF THE PROPOSED LOCATION OF EXCAVATION.
2) TAKE PRECAUTION TO AVOID DAMAGE TO GAS COMPANY INSTALLATIONS.
SEE PROVINCIAL REGULATION 210/72 FOR DETAILS

200 WM	WATERMAIN	200 WM	SL, HYDRO	150 WM	WATERMAIN	150 WM
⊕	HYDRANT	⊕	MTS	⊕	HYDRANT	⊕
⊙	VALVE	⊙	TRAFFIC SIGNALS	⊙	VALVE	⊙
525 LDS	LAND DRAINAGE SEWER	525 LDS	GAS	50 GAS	300 LDS	LAND DRAINAGE SEWER
375 WWS	WASTEWATER SEWER	375 WWS	SURVEY BAR	250 WWS	250 WWS	WASTEWATER SEWER
○	MANHOLE	○	FENCE	⊕	⊕	PROFILE
□	CATCH BASIN	□	*H *T	⊕	⊕	GROUND ABOVE PIPE
▽	CURB INLET	▽	POLE - HYDRO, MTS	⊕	⊕	
▽	CURB STOP	▽	CURB STOP	⊕	⊕	
▽	REDUCER	▽	GUY ANCHOR	⊕	⊕	
X	COUPLING	X	LIGHT STANDARD	⊕	⊕	
⊕	ANODE	⊕	TREE	⊕	⊕	
EXISTING	LEGEND-PLAN	PROPOSED	EXISTING	LEGEND-PLAN	PROPOSED	EXISTING
EXISTING	LEGEND-PROFILE	PROPOSED	EXISTING	LEGEND-PROFILE	PROPOSED	EXISTING

LOCATION APPROVED UNDERGROUND STRUCTURES

SUPV. U/G STRUCTURES COMMITTEE DATE: _____

NOTE: LOCATION OF UNDERGROUND STRUCTURES AS SHOWN ARE BASED ON THE BEST INFORMATION AVAILABLE BUT NO GUARANTEE IS GIVEN THAT ALL EXISTING UTILITIES ARE SHOWN OR THAT THE GIVEN LOCATIONS ARE EXACT. CONFIRMATION OF EXISTENCE AND EXACT LOCATION OF ALL SERVICES MUST BE OBTAINED FROM THE INDIVIDUAL UTILITIES BEFORE PROCEEDING WITH CONSTRUCTION.

B.M. ELEV. _____ FIELD BOOK # _____

POSTED TO LISB _____

NO. REVISIONS _____ DATE _____ BY _____

CITY OF WINNIPEG WATER AND WASTE ENGINEERING DIVISION

DESIGNED BY SC CHECKED BY TW

DRAWN BY CJH APPROVED BY KZ

HOR. SCALE 1:250 VERTICAL 1:50

RELEASED FOR CONSTRUCTION

DATE 2005 06 09

ENGINEER'S SEAL

ORIGINAL SIGNED BY K.R. ZUREK 05/06/09

BID OPPORTUNITY: 244-2005
FILENAME: D-8736_Xante.dwg
PLOT DATE: 2005 06 09

THE CITY OF WINNIPEG WATER AND WASTE DEPARTMENT

2005 WATERMAIN RENEWALS

XANTE STREET
50 S OF S R ROSS AVENUE TO PACIFIC AVENUE

SHEET 16 OF 16
CITY DRAWING NUMBER
D-8736