

NOTE: CHAINAGES SHOWN ARE ALONG E. R OF RORIE ST.

WATER SERVICE INFORMATION

ADDRESS	SIZE(mm) & TYPE (STREET)	SIZE(mm) & TYPE (PROP)	SHORT & LONG MEASUREMENT	CORP. LOCATION	REMARKS
145 MCDERMOT AVE	50	50	28.04 WEL BLDG	0.92 W OF S/C	SERV. OFF MCDERMOT
145 MCDERMOT AVE	100	-	40.54 EEL PORTAGE	OPP VALVE	SERV. OFF MCDERMOT
165 MCDERMOT AVE	50	50	4.88 EEL RORIE	0.60 N OF S/C	-
165 MCDERMOT AVE	50	50	13.87 NSL BLDG	-	SERV. OFF RORIE
165 MCDERMOT AVE	150	-	15.24 EWL RORIE	OPP VALVE	SERV. OFF RORIE
65 RORIE ST	50	-	22.56 NSL MCDERMOT	-	-
65 RORIE ST	50	-	15.54 EWL FOUNDATION	OPP S/C	SERV. OFF BANNATYNE
65 RORIE ST	150	-	15.56 EEL RORIE	-	-
80 RORIE ST	150	-	8.23 NSL BLDG	OPP VALVE	SERV. OFF RORIE
80 RORIE ST	CI	-	19.51 SSL BANNATYNE	-	-
166 BANNATYNE AVE	-	-	-	-	-
167 BANNATYNE AVE	-	-	-	-	-

* SERVICES TO BE RENEWED TO R ALL OTHERS TO BE RECONNECTED

CONSTRUCTION NOTES

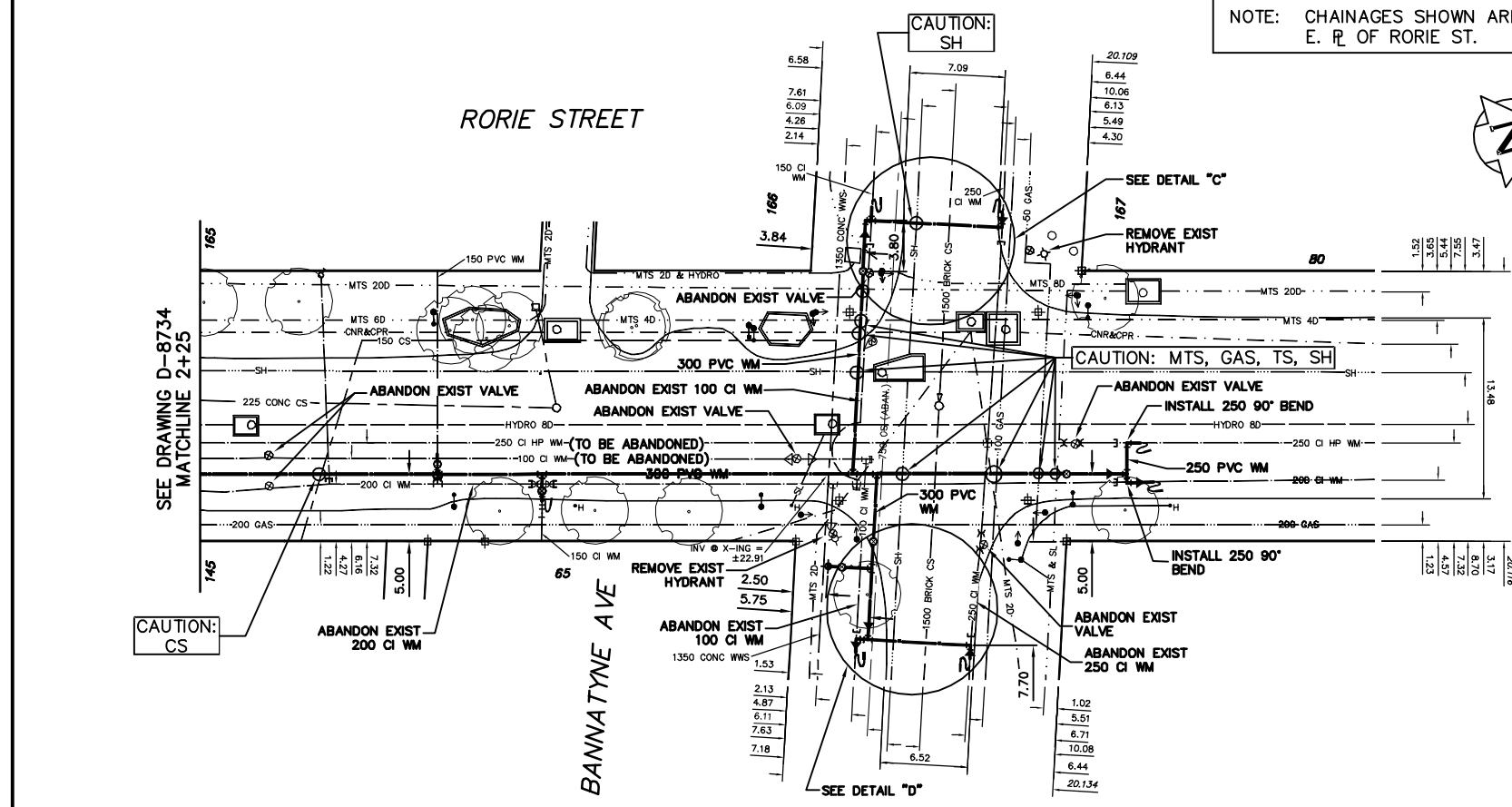
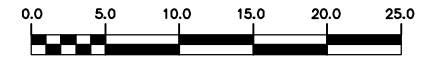
1. EXPOSE EXISTING WATERMAIN & CONFIRM INVERTS PRIOR TO CONSTRUCTION.
2. CONFIRM LOCATION OF ALL SERVICES IN THE FIELD.
3. INSTALL WATERMAIN BY TRENCHLESS METHODS.
4. TRENCHES AND EXCAVATIONS WITHIN 1 METRE OF A PAVED AREA INCLUDING SIDEWALKS SHALL BE CLASS 3 BACKFILL.
5. ALL MATERIALS SHALL CONFORM TO THE CITY OF WINNIPEG STANDARD CONSTRUCTION SPECIFICATIONS.
6. MINIMUM COVER TO TOP OF WATERMAIN SHALL BE 2.4 m.
7. REPLACE ALL EXISTING LEAD SERVICES FROM PROPOSED WATERMAIN TO R.
8. NOTIFY ALL AFFECTED RESIDENTS AND BUSINESSES 24 HOURS IN ADVANCE OF ANY WATER SHUTDOWNS OR DISRUPTION OF SERVICE.

METRIC
WHOLE NUMBERS INDICATE MILLIMETRES
DECIMALIZED NUMBERS INDICATE METRES

NOTE: ALL VALVES TO BE INSTALLED COUNTERCLOCKWISE TO CLOSE

WARNING

IF POWER EQUIPMENT OR EXPLOSIVES ARE TO BE USED FOR EXCAVATION ON THIS PROJECT THE CONTRACTOR MUST:
1) NOTIFY THE GAS COMPANY OF THE PROPOSED LOCATION OF EXCAVATION.
2) TAKE PRECAUTION TO AVOID DAMAGE TO GAS COMPANY INSTALLATIONS.
SEE PROVINCIAL REGULATION 210/72 FOR DETAILS



200 WM	WATERMAIN	200 WM	SL, HYDRO	150 WM	WATERMAIN	150 WM
⊕	HYDRANT	⊕	MTS	⊕	HYDRANT	⊕
⊙	VALVE	⊙	TRAFFIC SIGNALS	⊙	VALVE	⊙
525 LDS	LAND DRAINAGE SEWER	525 LDS	GAS	300 LDS	LAND DRAINAGE SEWER	300 LDS
375 WWS	WASTEWATER SEWER	375 WWS	SURVEY BAR	250 WWS	WASTEWATER SEWER	250 WWS
○	MANHOLE	○	FENCE	⊕	PROFILE	⊕
□	CATCH BASIN	□	POLE - HYDRO, MTS	⊕	GROUND ABOVE PIPE	⊕
▽	CURB INLET	▽	CURB STOP	⊕		⊕
◁	REDUCER	◁	GUY ANCHOR			
X	COUPLING	X	LIGHT STANDARD			
⊕	ANODE	⊕	TREE			
EXISTING	LEGEND-PLAN	PROPOSED	EXISTING	LEGEND-PLAN	PROPOSED	EXISTING
				LEGEND-PROFILE		

LOCATION APPROVED	UNDERGROUND STRUCTURES
DATE	DATE
NO. REVISIONS	DATE
BY	DATE

CITY OF WINNIPEG
WATER AND WASTE
ENGINEERING DIVISION

DESIGNED BY: SC
CHECKED BY: TW

DRAWN BY: CJH
APPROVED BY: KZ

HOR. SCALE: 1:250
VERTICAL: 1:50

RELEASED FOR CONSTRUCTION

DATE: 2005 06 09

ENGINEER'S SEAL

ORIGINAL SIGNED BY K.R. ZUREK 05/06/09

THE CITY OF WINNIPEG
WATER AND WASTE DEPARTMENT

2005 WATERMAIN RENEWALS

RORIE STREET
45 m S OF BANNATYNE AVENUE TO
20 m N OF BANNATYNE AVENUE

SHEET 14 OF 16
CITY DRAWING NUMBER
D-8734A

BID OPPORTUNITY: 244-2005
FILENAME: D-8734A_8734A.dwg
PLOT DATE: 2005 06 09