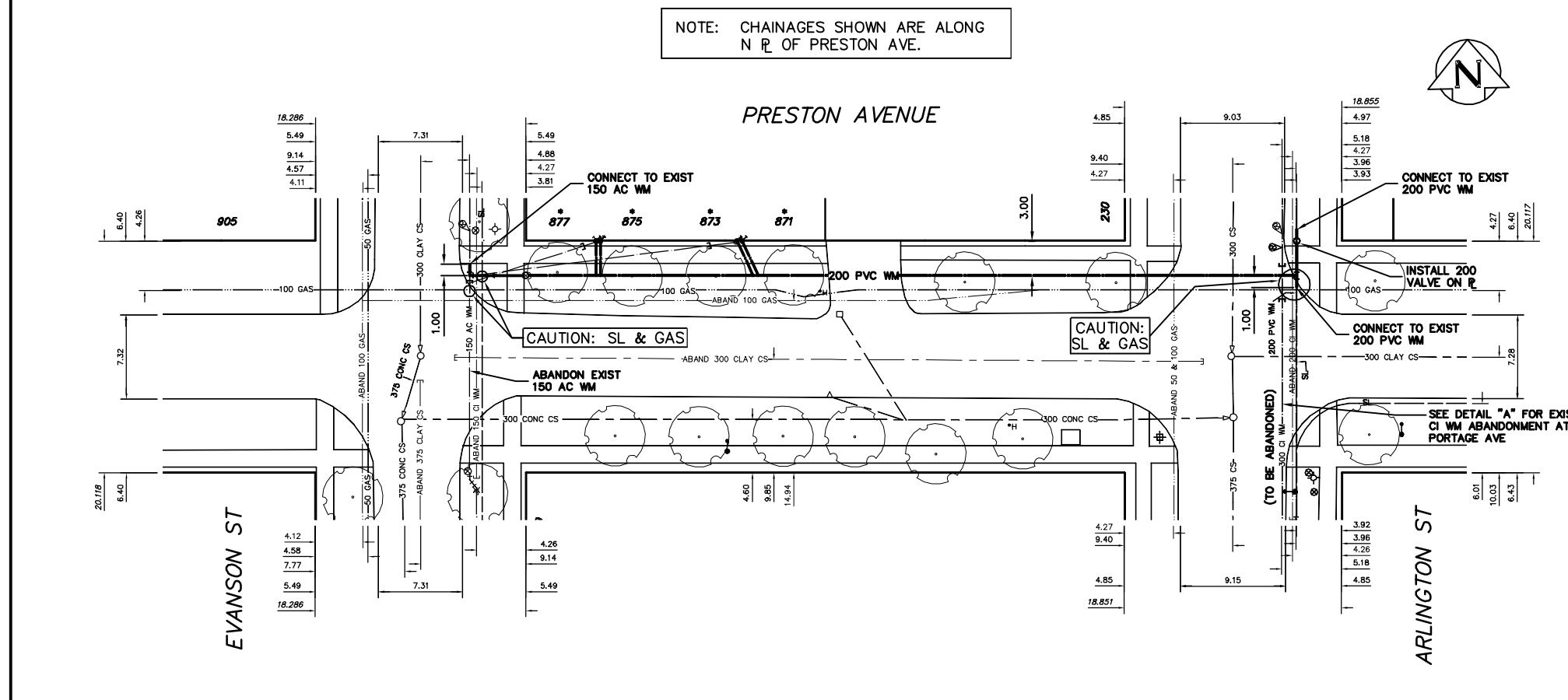
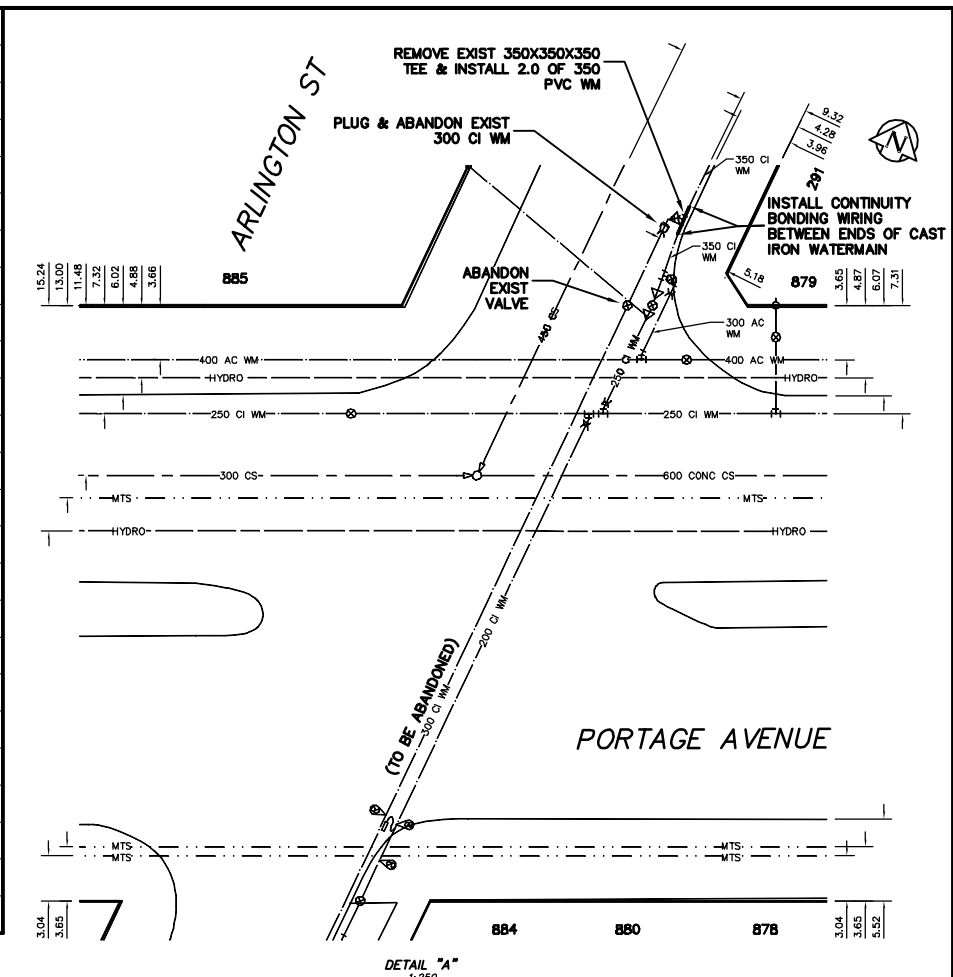


NOTE: CHAINAGES SHOWN ARE ALONG N R OF PRESTON AVE.



WATER SERVICE INFORMATION

ADDRESS	SIZE(mm) & TYPE (STREET)	SIZE(mm) & TYPE (PROP)	SHORT & LONG MEASUREMENT	CORP. LOCATION	REMARKS
223 ARLINGTON ST RESIDENTIAL	20 COPPER LEAD	13	4.27 NSL HOUSE 5.49>NNL PRESTON	0.61 S OF S/C	SERVICED FROM ARLINGTON-SEWER RENEW. MAY 88-W.M. RENEW. OCT. 86 SEWER JCT 11.28 N MH @ PRESTON
230 ARLINGTON ST RESIDENTIAL	20 COPPER LEAD	13	2.44 NSL #230 19.51>NNL PRESTON	0.46 S OF S/C	SERVICED FROM ARLINGTON-DBL. SERV. W/ #232 - WM RENEW. OCT 86
232 ARLINGTON ST RESIDENTIAL	20 COPPER LEAD	13	2.74 NSL HSE 11.28>NNL PRESTON	0.61 N OF S/C	SERVICED FROM ARLINGTON-DBL. SERV. W/ #230-W.M. RENEW. OCT 86 S/C IN SIDEWAYS (MAR.2/92)
871 PRESTON ST RESIDENTIAL	13 LEAD	13	7.77 WEL TERRACE 17.37 EEL EVANSON	3.05 SNL PRESTON	DBL. SERV. W/ #873 - SERVICE LAID DOWN STREET FROM MAIN-SEWER JCT MEAS 42.06 W MH @ ARLINGTON
873 PRESTON ST RESIDENTIAL	13 LEAD	13	3.35 EEL BLDG 17.37 EEL EVANSON	3.05 SNL PRESTON	DBL. SERV. W/ #871 - SERVICE LAID DOWN STREET FROM MAIN-SEWER JCT MEAS 43.13 W MH @ ARLINGTON
875 PRESTON ST RESIDENTIAL	13 LEAD	13	4.57 EEL TERRACE 6.37 EEL EVANSON	3.66 SNL PRESTON	DBL. SERV. W/ #877 - SERVICE LAID DOWN STREET FROM MAIN-SEWER JCT MEAS 16.31 E MH @ EVANSON
877 PRESTON ST RESIDENTIAL	13 LEAD	13	4.57 EEL TERRACE 6.37 EEL EVANSON	3.66 SNL PRESTON	DBL. SERV. W/ #875 - SERVICE LAID DOWN STREET FROM MAIN-SEWER JCT MEAS 15.70 E MH @ EVANSON
210 EVANSON ST RESIDENTIAL	16 COPPER	20 COPPER	10.97 NSL FOUNDATION 19.81 SSL PRESTON	0.6 S OF S/C	SERVICED FROM EVANSON COUPLINGS 7.62 AND 8.06 FROM BLDG

*SERVICES TO BE RENEWED TO R ALL OTHERS TO BE RECONNECTED

CONSTRUCTION NOTES

1. EXPOSE EXISTING WATERMAIN & CONFIRM INVERTS PRIOR TO CONSTRUCTION.
2. CONFIRM LOCATION OF ALL SERVICES IN THE FIELD.
3. INSTALL WATERMAIN BY TRENCHLESS METHODS.
4. TRENCHES AND EXCAVATIONS WITHIN 1 METRE OF A PAVED AREA INCLUDING SIDEWALKS SHALL BE CLASS 3 BACKFILL.
5. ALL MATERIALS SHALL CONFORM TO THE CITY OF WINNIPEG STANDARD CONSTRUCTION SPECIFICATIONS.
6. MINIMUM COVER TO TOP OF WATERMAIN SHALL BE 2.4 m.
7. REPLACE ALL EXISTING LEAD SERVICES FROM PROPOSED WATERMAIN TO R.
8. NOTIFY ALL AFFECTED RESIDENTS AND BUSINESSES 24 HOURS IN ADVANCE OF ANY WATER SHUTDOWNS OR DISRUPTION OF SERVICE.

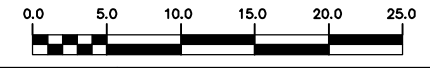
METRIC

WHOLE NUMBERS INDICATE MILLIMETRES
DECIMALIZED NUMBERS INDICATE METRES

NOTE: ALL VALVES TO BE INSTALLED COUNTERCLOCKWISE TO CLOSE

WARNING

IF POWER EQUIPMENT OR EXPLOSIVES ARE TO BE USED FOR EXCAVATION ON THIS PROJECT THE CONTRACTOR MUST:
1) NOTIFY THE GAS COMPANY OF THE PROPOSED LOCATION OF EXCAVATION.
2) TAKE PRECAUTION TO AVOID DAMAGE TO GAS COMPANY INSTALLATIONS.
SEE PROVINCIAL REGULATION 210/72 FOR DETAILS



200 WM	WATERMAIN	200 WM	SL, HYDRO	150 WM	WATERMAIN	150 WM
+	HYDRANT	+	MTS	+	HYDRANT	+
o	VALVE	o	TRAFFIC SIGNALS	o	VALVE	o
525 LDS	LAND DRAINAGE SEWER	525 LDS	GAS	300 LDS	LAND DRAINAGE SEWER	300 LDS
375 WWS	WASTEWATER SEWER	375 WWS	SURVEY BAR	250 WWS	WASTEWATER SEWER	250 WWS
o	MANHOLE	o	FENCE	x	PROFILE	
□	CATCH BASIN	□	POLE - HYDRO, MTS	///	GROUND ABOVE PIPE	
▽	CURB INLET	▽	CURB STOP			
△	REDUCER	△	GUY ANCHOR			
X	COUPLING	X	LIGHT STANDARD			
⊕	ANODE	⊕	TREE			
EXISTING	LEGEND-PLAN	PROPOSED	EXISTING	LEGEND-PLAN	PROPOSED	EXISTING

LOCATION APPROVED UNDERGROUND STRUCTURES

SUPPLY U/G STRUCTURES COMMITTEE DATE

NOTE:
LOCATION OF UNDERGROUND STRUCTURES AS SHOWN ARE BASED ON THE BEST INFORMATION AVAILABLE BUT NO GUARANTEE IS GIVEN THAT THE GIVEN LOCATIONS ARE EXACT. CONFIRMATION OF EXISTENCE AND EXACT LOCATION OF ALL SERVICES MUST BE OBTAINED FROM THE INDIVIDUAL UTILITIES BEFORE PROCEEDING WITH CONSTRUCTION.

B.M. ELEV.	FIELD BOOK #
POSTED TO LBS	
NO. REVISIONS	DATE BY

**CITY OF WINNIPEG
WATER AND WASTE
ENGINEERING DIVISION**

DESIGNED BY SC CHECKED BY TW
DRAWN BY CJH/PB APPROVED BY KZ

HOR. SCALE 1:250
VERTICAL SCALE 1:50

RELEASED FOR CONSTRUCTION

DATE 2005 06 10

ENGINEER'S SEAL

ORIGINAL SIGNED BY K.R. ZUREK 05/06/10

**THE CITY OF WINNIPEG
WATER AND WASTE DEPARTMENT**

2005 WATERMAIN RENEWALS

**PRESTON AVENUE
EVANSON STREET TO
ARLINGTON STREET**

SHEET 12 OF 16
CITY DRAWING NUMBER
D-8733

BID OPPORTUNITY: 244-2005
FILENAME: D-8725_8729_8733.dwg
PLOT DATE: 2005 06 10