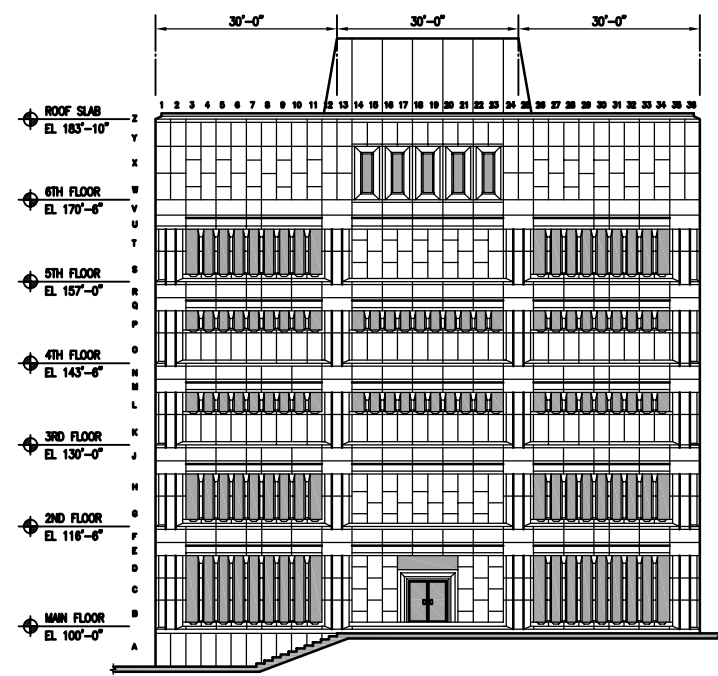
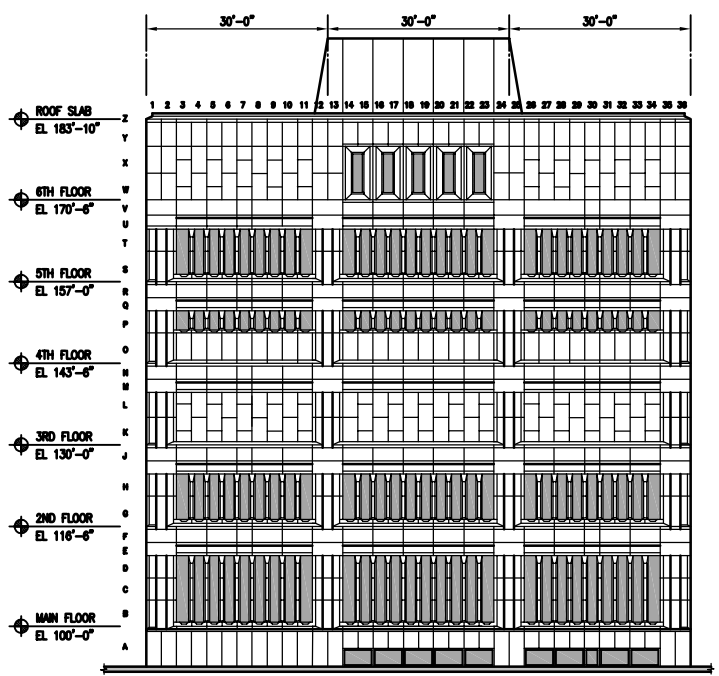


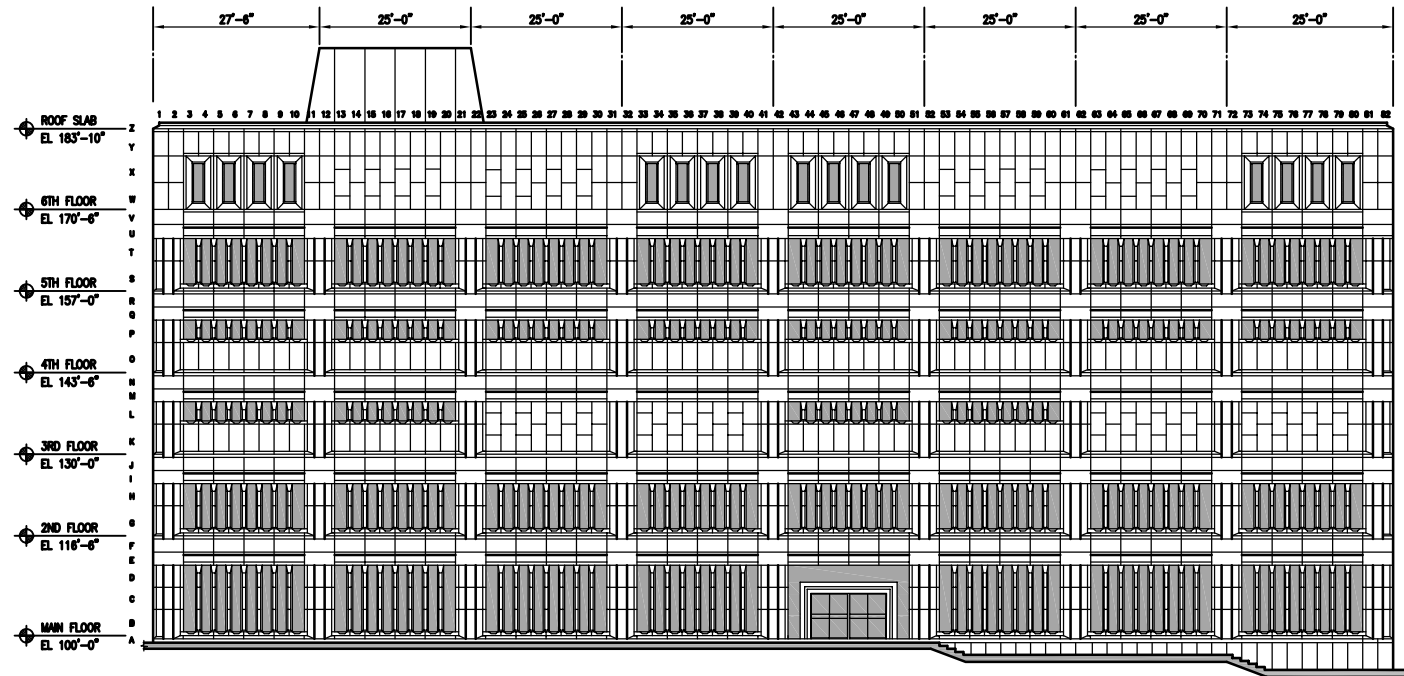
BUILDING PLAN
1/16" = 1'-0"



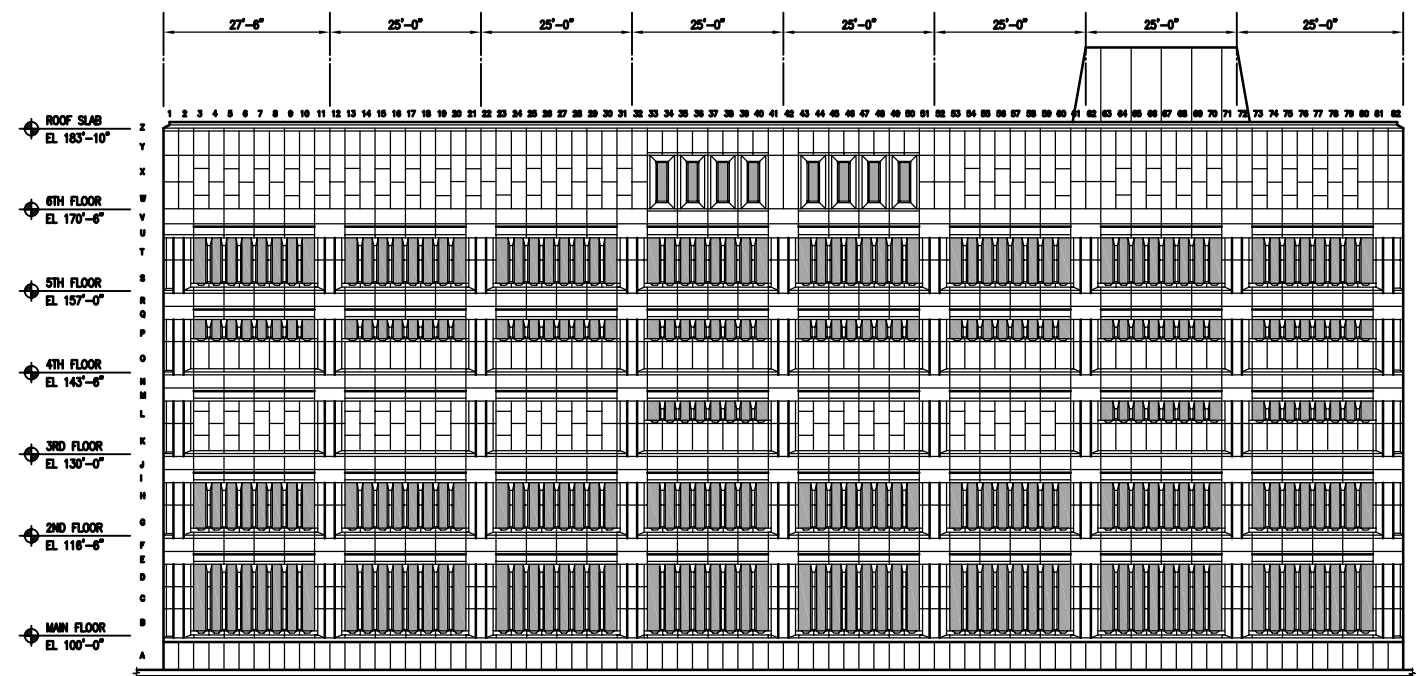
NORTH ELEVATION
1/16" = 1'-0"



SOUTH ELEVATION
1/16" = 1'-0"



WEST ELEVATION
1/16" = 1'-0"



EAST ELEVATION
1/16" = 1'-0"

No.	Date	Revisions	By

CROSIER KILGOUR & PARTNERS LTD.
Consulting Structural Engineers
300-275 Carlton Street, Winnipeg, MB R3C 5R6
Tel: (204) 943-7501 Fax: (204) 943-7507

The General Contractor shall check & verify all dimensions and shall report any errors or omissions to the designers.

Project: **PUBLIC SAFETY BUILDING**
WINNIPEG, MANITOBA

Drawing Title: **2005 CLADDING STABILIZATION**

Design	Drawn	Checked	Scale	Date	File
HTW	TW	JMW	AS NOTED	FEB 22/05	2005-117

Sheet No. **SK-1**