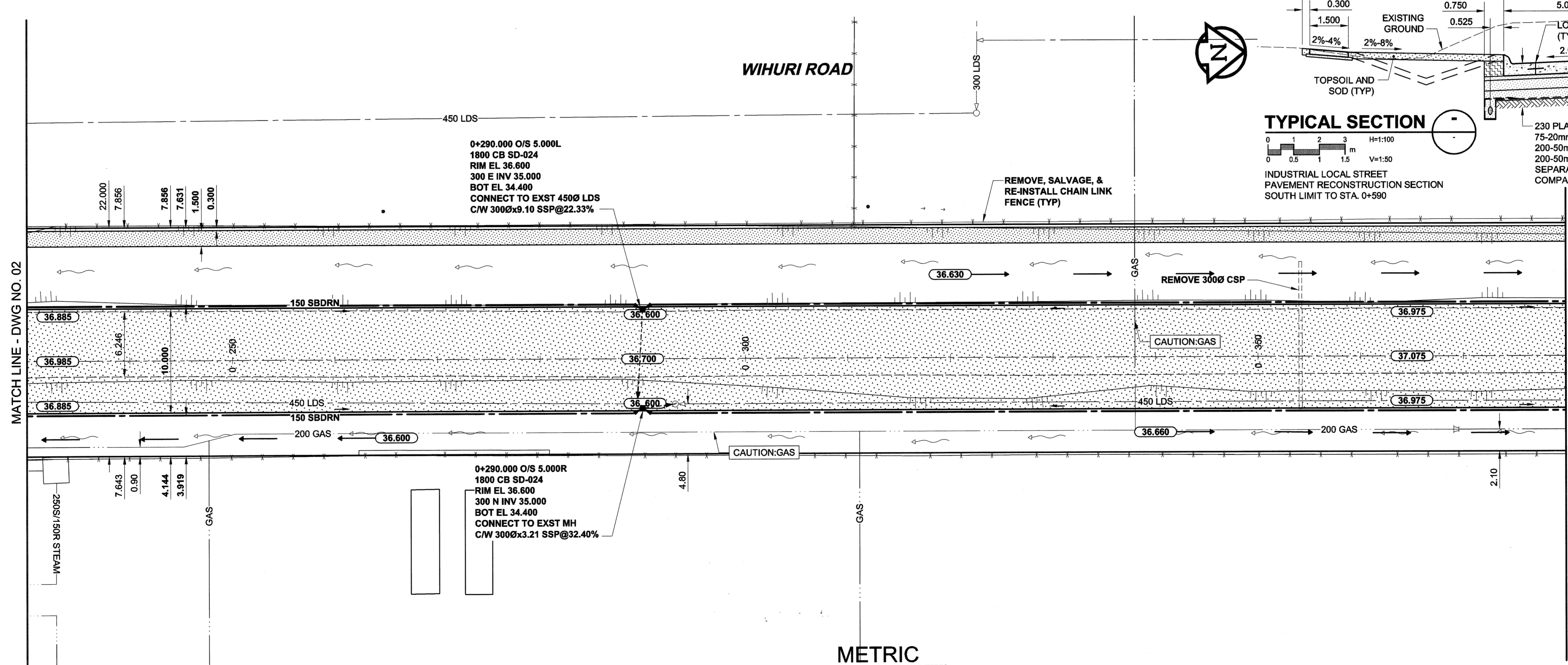
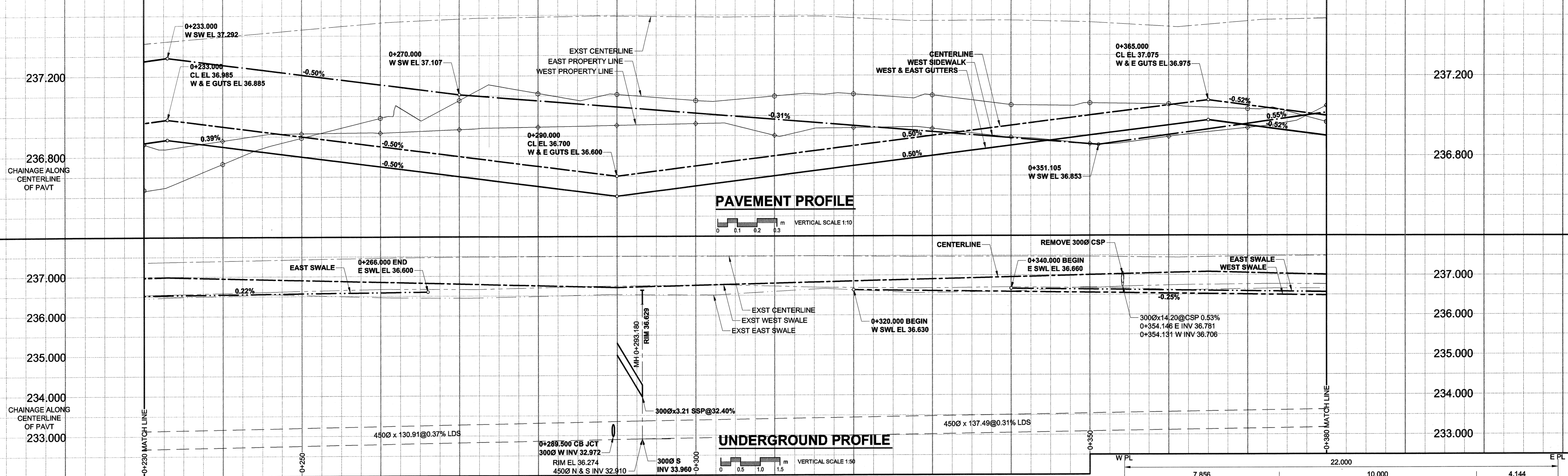


A1 SIZE 23.4" x 33.1" (594mm x 841mm)

PLLOT: 05/06/03 2:04:55 PM

UMA FILE NAME: 0265-370-00_01-CT-003_RX.dwg Saved By: cdozspod



- NOTES**
- ADJUST MH AND CB RIMS TO NEW GRADES.
 - MANHOLES SD-010 C/W AP-004 & AP-005.
 - CATCH BASINS SD-024 OFFSET DIMENSIONS ARE TAKEN TO STRUCTURE LOCATIONS RELATIVE TO BACK OF CURB.
 - CATCH BASINS SD-025 IN SWALES C/W DITCH INLET GRATES AS SHOWN ON DRAWING 01
 - CATCH PITS SD-023 IN SWALES C/W AP-004 & AP-006.
 - CONTRACTOR TO EXERCISE CAUTION WHEN INSTALLING 150 SUBDRAIN TO PREVENT CROSSING CONFLICTS WITH EXISTING GAS SERVICES.
 - THE LOCATION OF ALL SERVICES TO BE CONFIRMED IN THE FIELD BY THE CONTRACTOR.
 - ADD 200.000m TO ABBREVIATED ELEVATIONS TO OBTAIN GEODETIC ELEVATIONS.

METRIC
WHOLE NUMBERS INDICATE MILLIMETRES
DECIMALIZED NUMBERS INDICATE METRES

NATURAL GAS	○	MANHOLE	●	CONCRETE PAVEMENT	▨	LOCATION APPROVED	BM 39-035 ELEV 236.740m
COMMUNICATION	□	CATCH BASIN / CATCH PIT	■	ASPHALT PAVEMENT	▩	UNDERGROUND STRUCTURES	
ELECTRICAL	△	C & G INLET WITH BOX	◻	CONC. SIDEWALK/MEDIAN	▧		
CATV	⊕	TREE	⊙	PAVING STONE	▩	SUPR. U/G STRUCTURES	DATE
TRAFFIC SIGNALS	⊕	TEST HOLE	⊕	TOPSOIL & SOD	▩	NOTE:	
LAND DRAINAGE SEWER	—	PROPERTY LINE	—	GRAVEL	▩	LOCATION OF UNDERGROUND STRUCTURES	
SANITARY/COMBINED SEWER	—	SURVEY BAR	—	RAMP CURB	▩	AS SHOWN ARE BASED ON THE BEST	
CATCHBASIN LEAD	—	FENCE	—	REMOVAL	▩	INFORMATION AVAILABLE. BUT NO	
WATERMAIN	—	BOC/EOPAVT	—		▩	GUARANTEE IS GIVEN THAT ALL EXISTING	
SUBDRAIN	—	ELEVATION	33.100		▩	UTILITIES ARE SHOWN OR THAT THE GIVEN	
DITCH	—				▩	LOCATIONS ARE EXACT. CONFIRMATION OF	
EXISTING	—				▩	EXISTENCE AND EXACT LOCATION OF ALL	
LEGEND - PLAN	—				▩	SERVICES MUST BE OBTAINED FROM THE	
NEW	—				▩	INDIVIDUAL UTILITIES BEFORE PROCEEDING	
EXISTING	—				▩	WITH CONSTRUCTION.	

DESIGNED BY	JGK	CHECKED BY	RB
DRAWN BY	DID	APPROVED BY	RB
HOR. SCALE	AS SHOWN	RELEASED FOR CONSTRUCTION	DATE JUNE 7/2005
VERT. SCALE	1:250		
DATE	05/08/06		

uma
An AECOM Company
2005 UMA ENGINEERING LTD. ALL RIGHTS RESERVED.

PROFESSIONAL'S SEAL
PROVINCE OF MANITOBA
J.G. KENNEDY
Member
22326
JUN 3/05
REGISTERED PROFESSIONAL ENGINEER

CONSULTANT DRAWING NO. 03
0265-370-00

THE CITY OF WINNIPEG
PUBLIC WORKS DEPARTMENT
ENGINEERING DIVISION

WIHURI ROAD
PETER AVENUE TO SASKATCHEWAN AVENUE
NEW TRANSPORTATION FACILITY
ROAD CONSTRUCTION, LAND DRAINAGE SEWER,
AND ASSOCIATED WORKS
HORIZONTAL AND VERTICAL ALIGNMENT
FROM STA. 0+230 TO STA. 0+380

CITY DRAWING NUMBER: N/A
SHEET 3 OF 7
DRAWING No. 03
REV 0

BID OPPORTUNITY NO. 225-2005