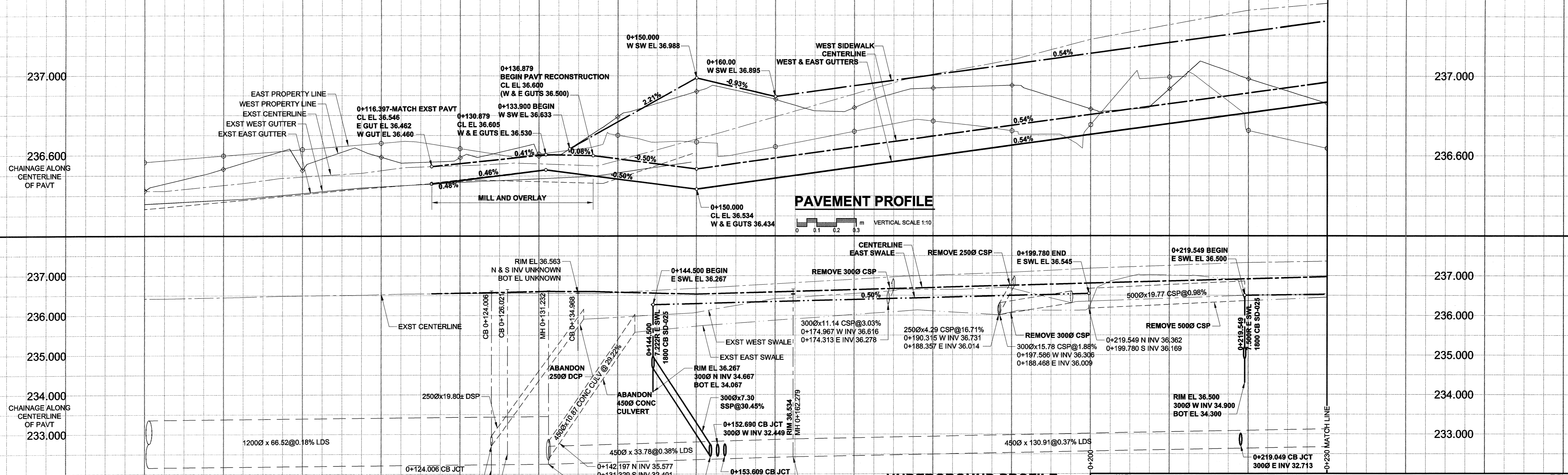


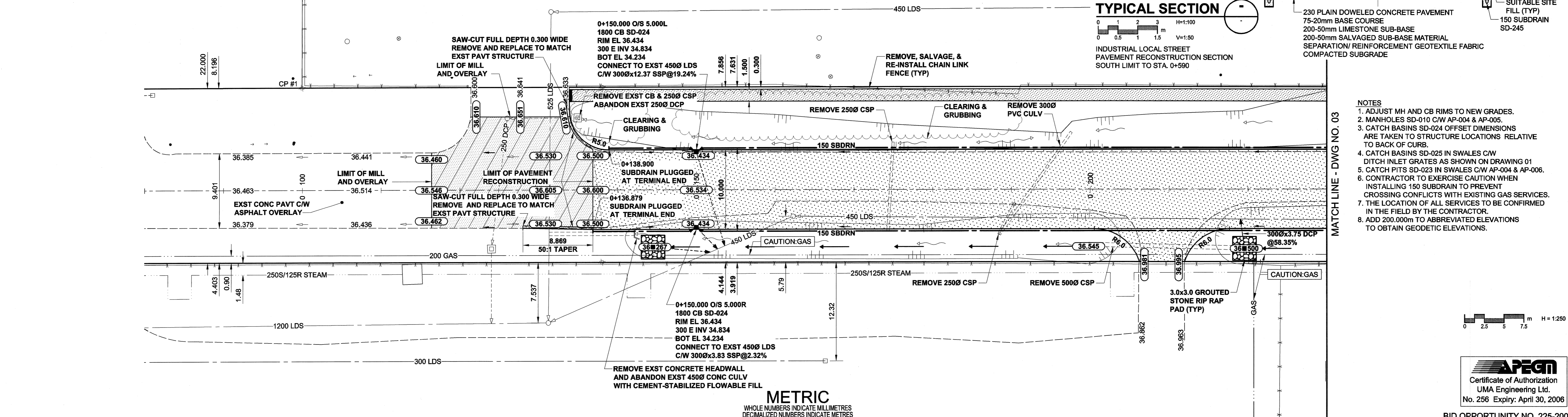
A1 SIZE 23.4" x 35.1" (594mm x 891mm)

PLOT: 05/06/03 2:02:45 PM

UMA FILE NAME: 0265-370-00_01-CT1002_RX.dwg Saved By: ddszpod



WIHURI ROAD



- NOTES**
- ADJUST MH AND CB RIMS TO NEW GRADES.
 - MANHOLES SD-010 C/W AP-004 & AP-005.
 - CATCH BASINS SD-024 OFFSET DIMENSIONS ARE TAKEN TO STRUCTURE LOCATIONS RELATIVE TO BACK OF CURB.
 - CATCH BASINS SD-025 IN SWALES C/W DITCH INLET GRATES AS SHOWN ON DRAWING 01
 - CATCH PITS SD-023 IN SWALES C/W AP-004 & AP-006.
 - CONTRACTOR TO EXERCISE CAUTION WHEN INSTALLING 150 SUBDRAIN TO PREVENT CROSSING CONFLICTS WITH EXISTING GAS SERVICES.
 - THE LOCATION OF ALL SERVICES TO BE CONFIRMED IN THE FIELD BY THE CONTRACTOR.
 - ADD 200.000m TO ABBREVIATED ELEVATIONS TO OBTAIN GEODETIC ELEVATIONS.

UMA
 Certificate of Authorization
 UMA Engineering Ltd.
 No. 256 Expiry: April 30, 2006

EXISTING	LEGEND - PLAN	NEW	EXISTING	LEGEND - PLAN	NEW	EXISTING	LEGEND - PLAN	NEW	
	NATURAL GAS		MANHOLE		CONCRETE PAVEMENT		LOCATION APPROVED		BM 39-035 ELEV 236.740m
	COMMUNICATION		CATCH BASIN / CATCH PIT		ASPHALT PAVEMENT		UNDERGROUND STRUCTURES		JGK
	ELECTRICAL		C & G INLET WITH BOX		CONC. SIDEWALK/MEDIAN		DATE		RB
	CATV		TREE		PAVING STONE		NOTE:		RB
	TRAFFIC SIGNALS		TEST HOLE		TOPSOIL & SOD		LOCATION OF UNDERGROUND STRUCTURES AS SHOWN ARE BASED ON THE BEST INFORMATION AVAILABLE. BUT NO GUARANTEE IS GIVEN THAT ALL EXISTING UTILITIES ARE SHOWN OR THAT THE GIVEN LOCATIONS ARE EXACT. CONFIRMATION OF EXISTENCE AND EXACT LOCATION OF ALL SERVICES MUST BE OBTAINED FROM THE INDIVIDUAL UTILITIES BEFORE PROCEEDING WITH CONSTRUCTION.		1:250
	LAND DRAINAGE SEWER		PROPERTY LINE		GRAVEL		VERT. SCALE		05/06/06
	SANITARY/COMBINED SEWER		SURVEY BAR		RAMP CURB		05/05/06		05/06/06
	CATCHBASIN LEAD		FENCE		REMOVAL		Y/M/M/D/D		05/06/06
	WATERMAIN		BOC/EOPAVT						05/06/06
	SUBDRAIN		ELEVATION						05/06/06
	DITCH								05/06/06

METRIC
 WHOLE NUMBERS INDICATE MILLIMETRES
 DECIMALIZED NUMBERS INDICATE METRES

UMA
 An AECOM Company
 2005 UMA ENGINEERING LTD. ALL RIGHTS RESERVED.

DESIGNED BY: JGK
 CHECKED BY: RB
 DRAWN BY: DID
 APPROVED BY: RB
 HOR. SCALE: 1:250
 VERT. SCALE: AS SHOWN
 ISSUED FOR CONSTRUCTION: 05/06/06
 ISSUED FOR CLIENT REVIEW: 05/05/06
 NO. REVISIONS: Y/M/M/D/D BY

PROFESSIONAL'S SEAL
 PROVINCE OF MANITOBA
 J.G. KENNEDY
 Member
 22326
 5/13/06
 REGISTERED PROFESSIONAL ENGINEER
 CONSULTANT DRAWING NO. 02
 0265-370-00

THE CITY OF WINNIPEG
 PUBLIC WORKS DEPARTMENT
 ENGINEERING DIVISION

WIHURI ROAD
 PETER AVENUE TO SASKATCHEWAN AVENUE
 NEW TRANSPORTATION FACILITY
 ROAD CONSTRUCTION, LAND DRAINAGE SEWER,
 AND ASSOCIATED WORKS
 HORIZONTAL AND VERTICAL ALIGNMENT
 FROM STA. 0+116 TO STA. 0+230

CITY DRAWING NUMBER: N/A
 SHEET 2 OF 7
 DRAWING NO. 02
 REV 0

BID OPPORTUNITY NO. 225-2005