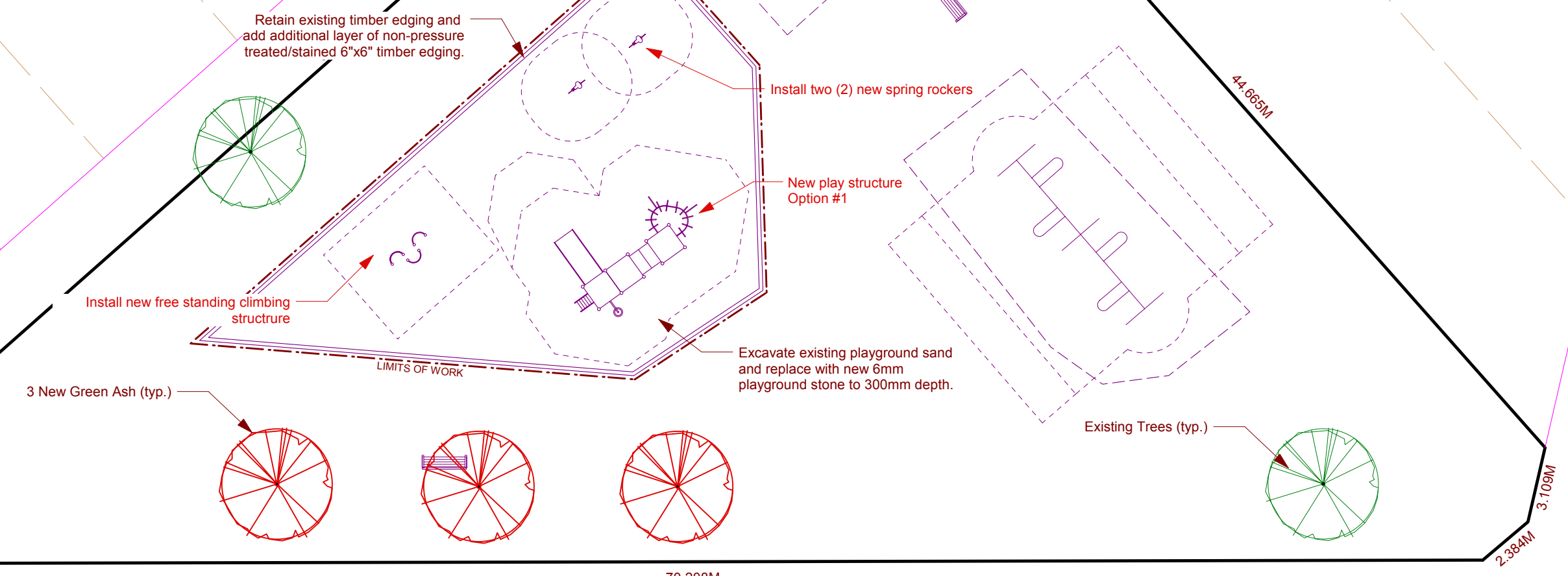


GIRDWOOD CR.

PRIVATE RESIDENCE



PUBLIC LANE

LOCATION OF UNDERGROUND STRUCTURES AS SHOWN ARE BASED ON THE BEST INFORMATION AVAILABLE BUT NO GUARANTEE IS GIVEN THAT ALL EXISTING UTILITIES ARE SHOWN OR THAT THE GIVEN LOCATIONS ARE EXACT. CONFIRMATION OF EXISTENCE AND EXACT LOCATION OF ALL SERVICES MUST BE OBTAINED FROM THE INDIVIDUAL UTILITIES BEFORE PROCEEDING WITH CONSTRUCTION.



THE CITY OF WINNIPEG  
 Planning, Property and Development Department  
 Planning and Land Use Division  
 Unit 15 - 30 Fort Street, Winnipeg, MB, (R3C 4X5)

DESIGNED BY	CHECKED BY	APPROVED BY
DRAWN BY DS	RELEASED FOR CONSTRUCTION	
HORIZ. SCALE 1 : 200		
VERT. SCALE		
DATE MAR/05	MANAGER, PLANNING AND LAND USE DIVISION	DATE

DRAWING TITLE  
**GIRDWOOD PARK  
 PROPOSED SITEWORKS**

CAD DRAWING NO.  
 DRAWING NO.  
**G.20-C**