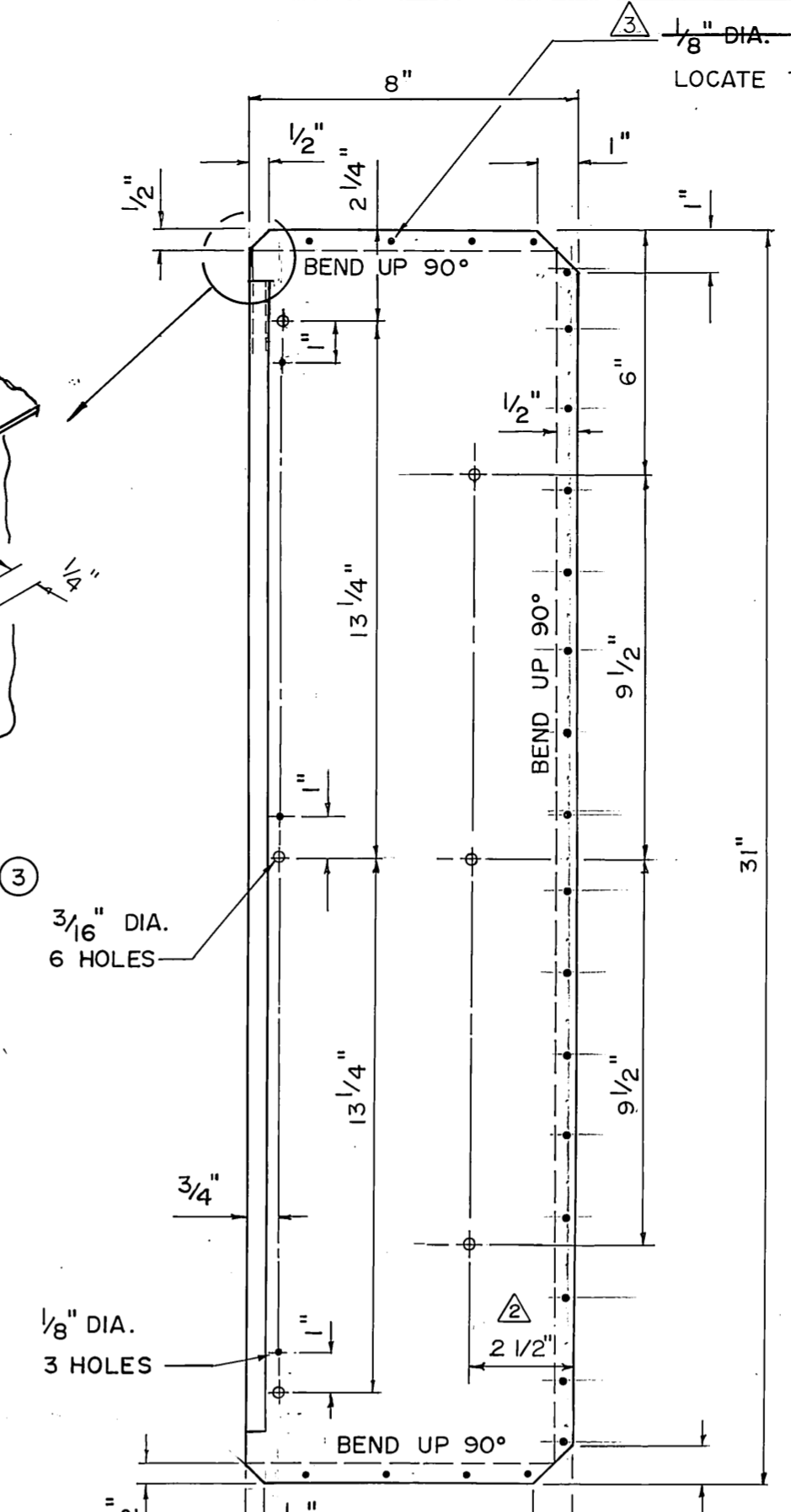
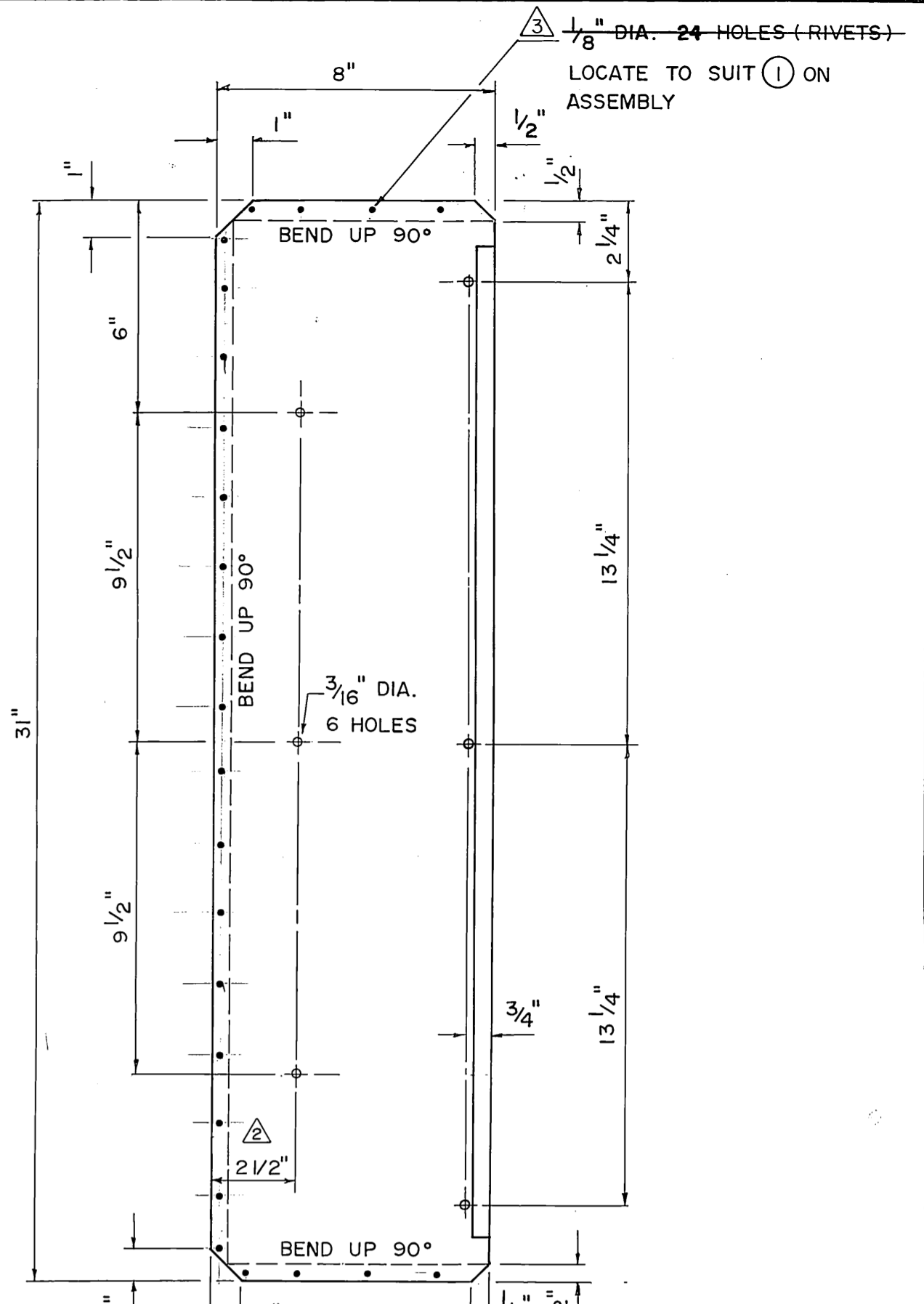


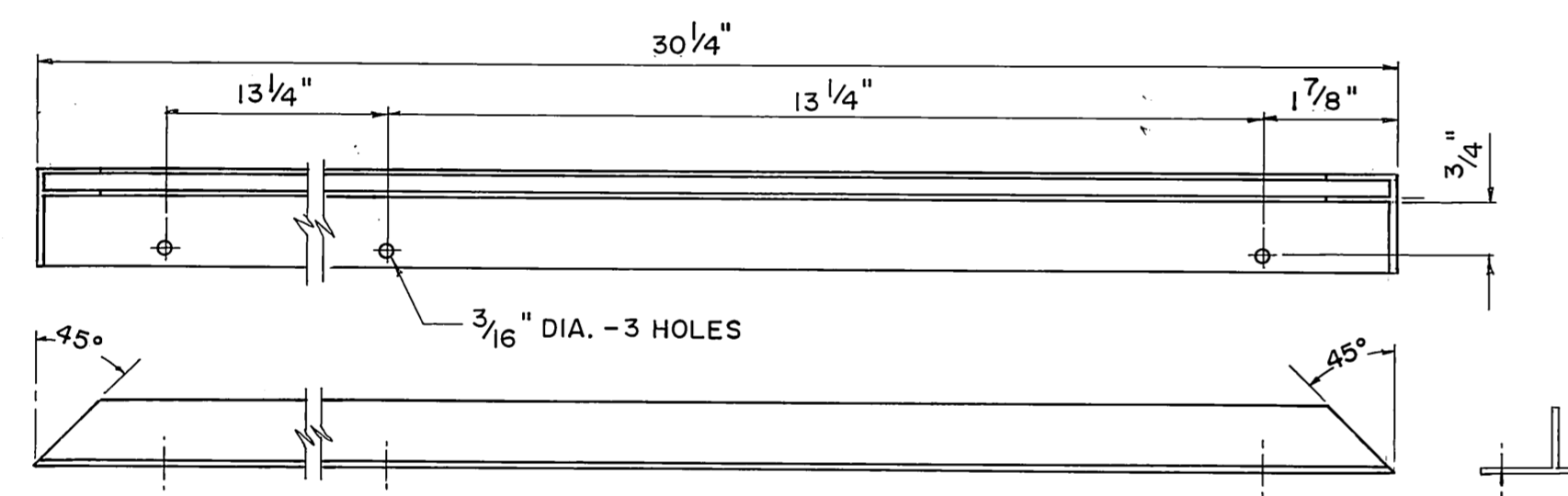
(1) 0.051 ALUMINUM PLATE 24" x 48" LG. (1 REQ'D)  
SCALE 1/4" = 1"



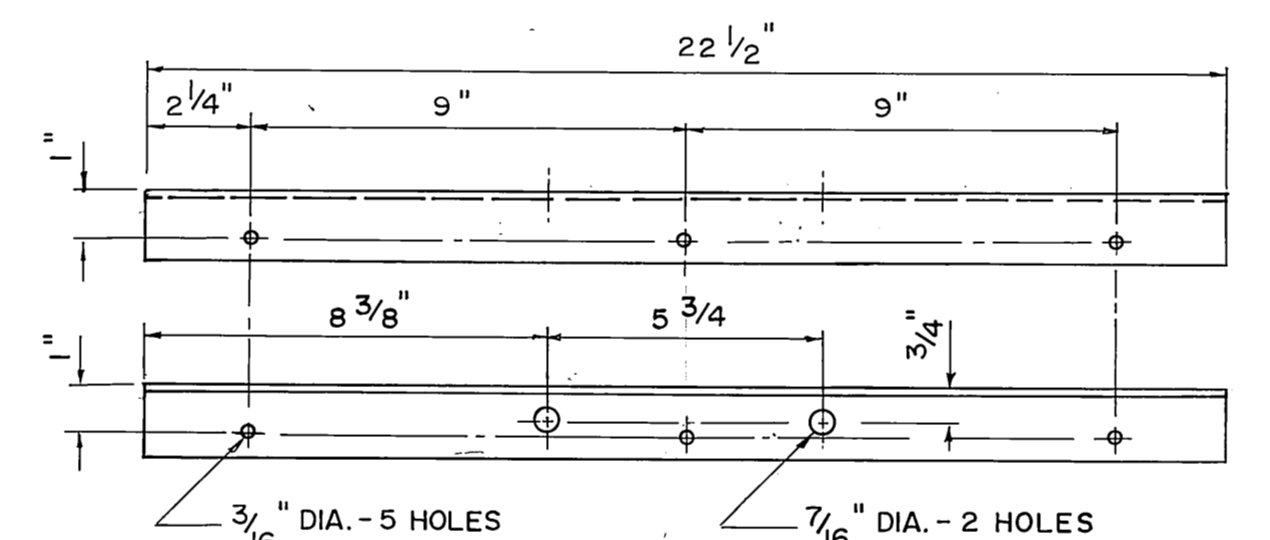
(2) 0.051 ALUMINUM PLATE 9 1/2" x 31" LG. (1 REQ'D)  
SCALE 1/4" = 1"



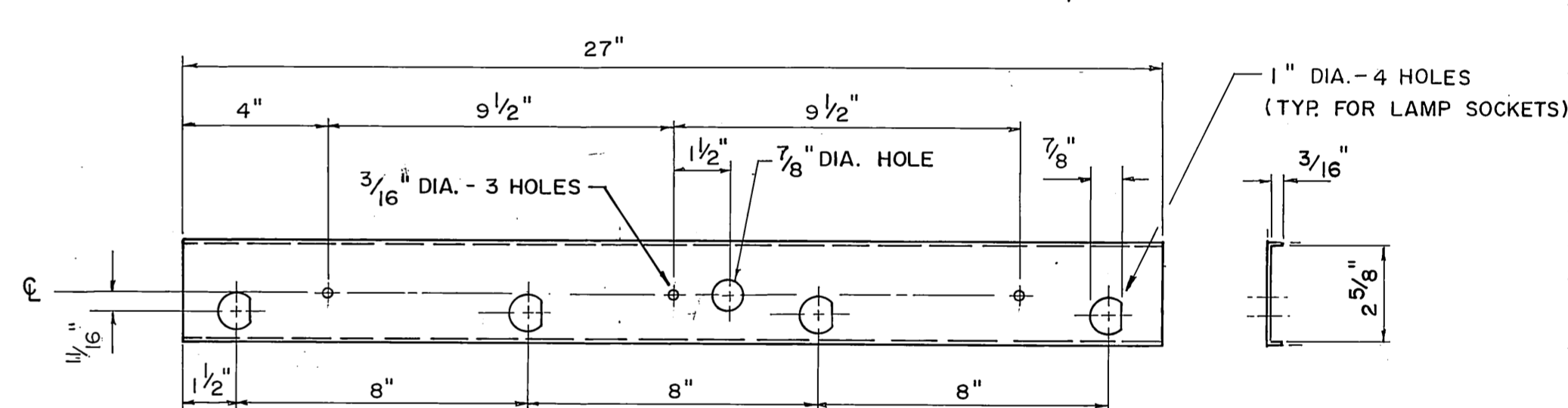
(3) 0.051 ALUMINUM PLATE 9 1/2" x 31" LG. (1 REQ'D)  
SCALE 1/4" = 1"



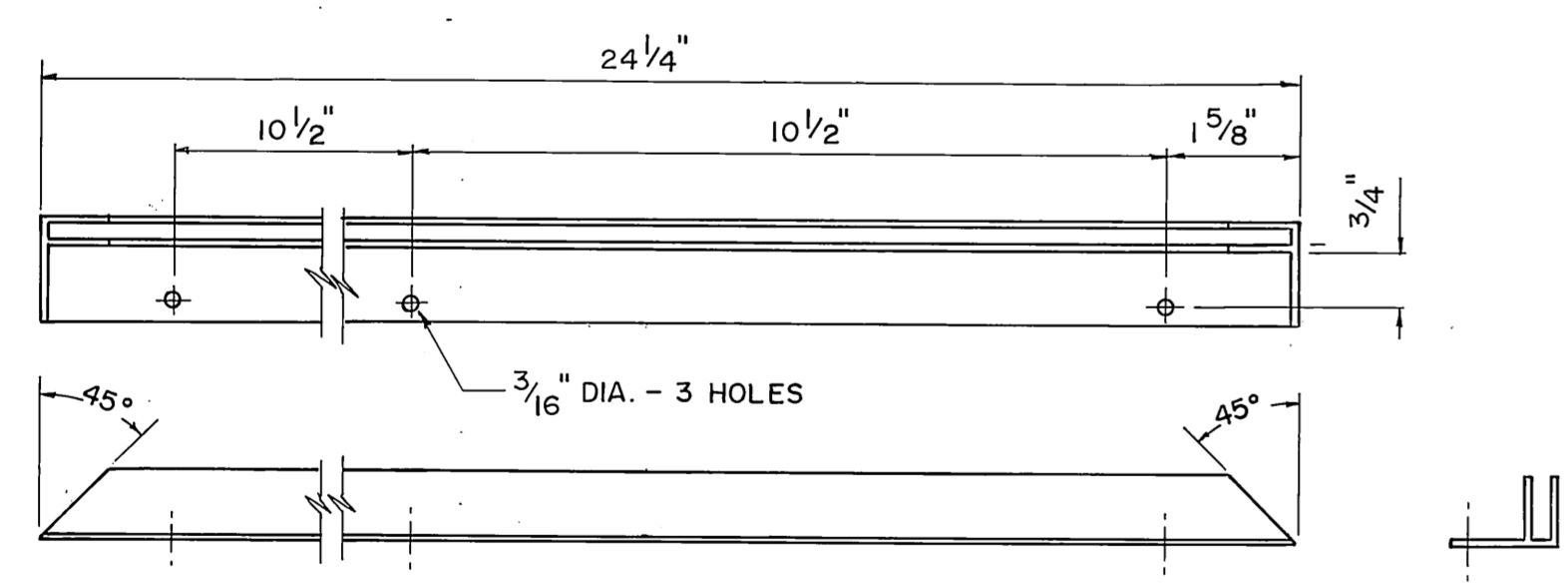
(4) 1" x 1 1/2" x 3/16" F-SECTION - 30 1/4" LG. (2 REQ'D)  
SCALE 3/8" = 1"



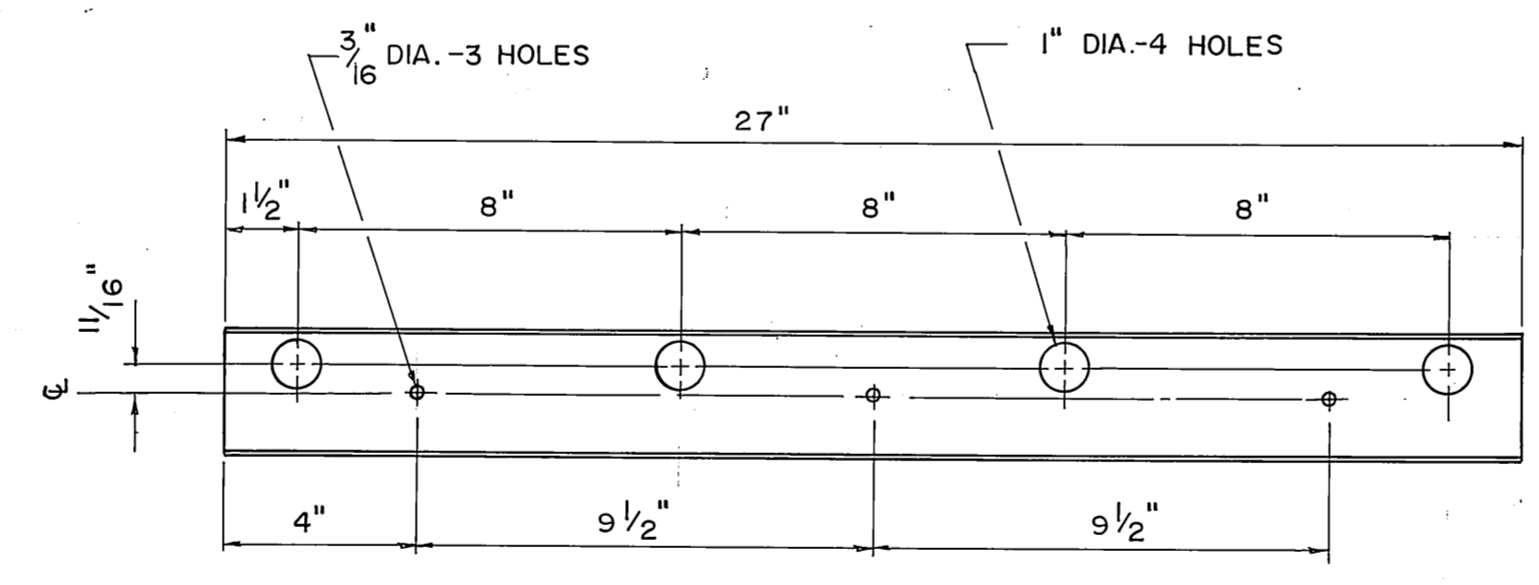
(7) 1/8" x 1 1/2" x 1 1/2" ALUMINUM ANGLE - 22 1/2" LG. (2 REQ'D)  
SCALE 1/4" = 1"



(9) 14 GAUGE ALUMINUM PLATE 3" x 27" LG. (1 REQ'D)  
SCALE 1/4" = 1"



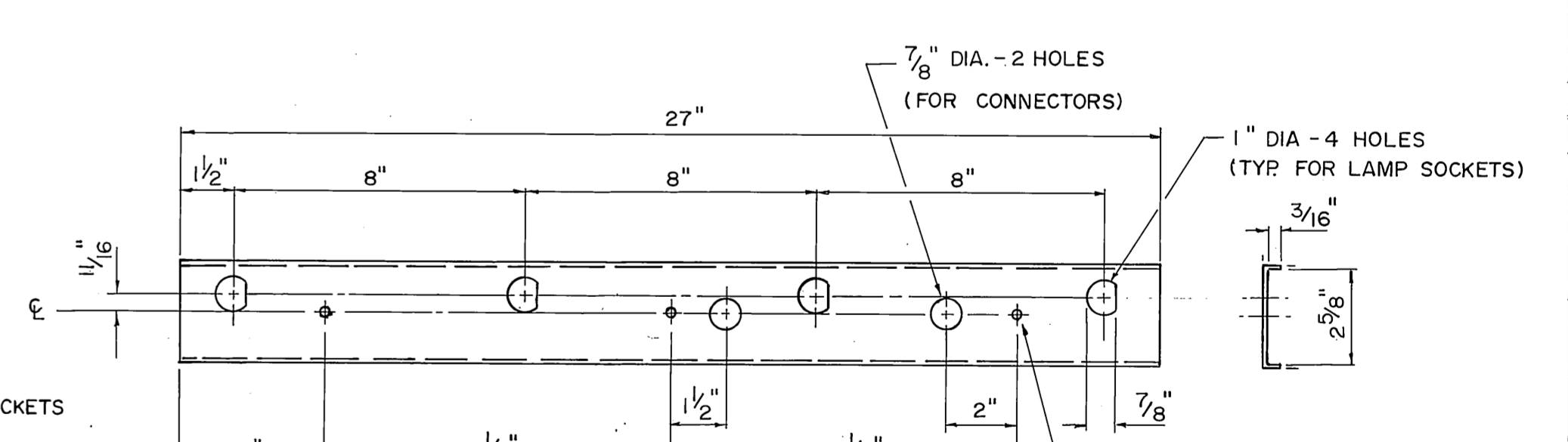
(5) 1" x 1 1/2" x 3/16" F-SECTION - 24 1/4" LG. (2 REQ'D)  
SCALE 3/8" = 1"



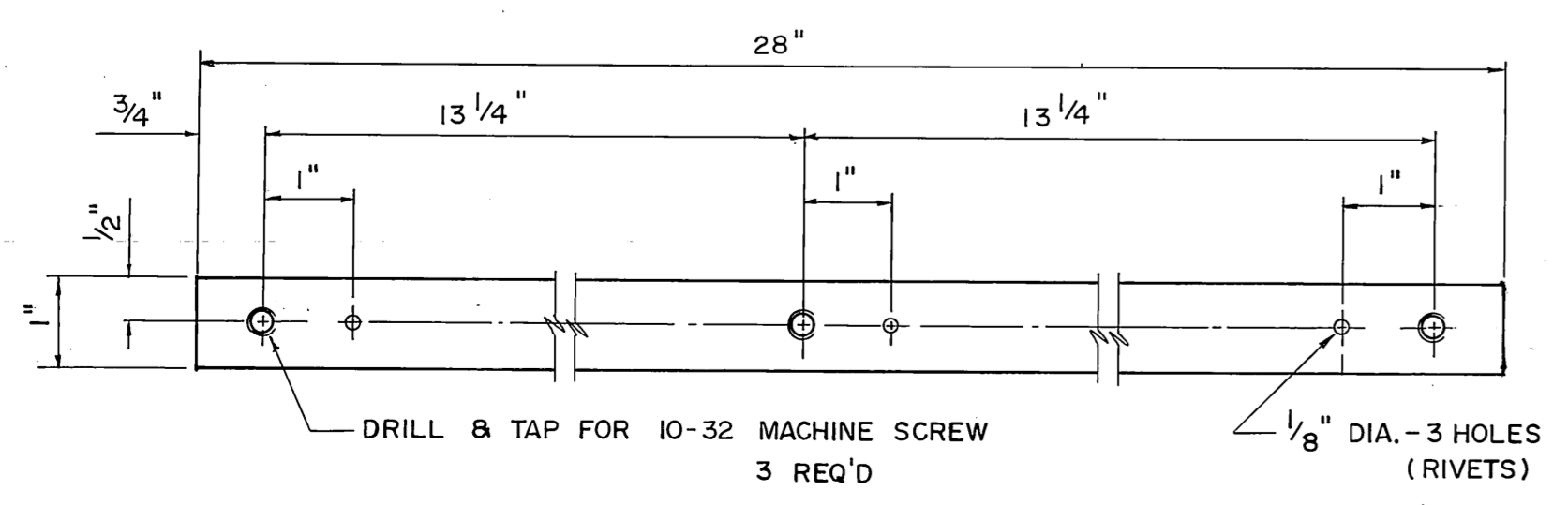
(8) 14 GAUGE ALUMINUM PLATE 3 5/8" x 27" LG. (2 REQ'D)  
SCALE 1/4" = 1"

SEE NOTE BELOW

NOTE: WIRE WAY DEPTH FOR FIXED SOCKETS SHALL BE 1/2"  
WIRE WAY DEPTH FOR LOADED SOCKETS SHALL BE 3/4"



(10) 14 GAUGE ALUMINUM PLATE 3" x 27" LG. (1 REQ'D)  
SCALE 1/4" = 1"



(6) 3/16" x 1" ALUMINUM BAR - 28" LG. (1 REQ'D)  
SCALE 1/2" = 1"

<p>LOCATION APPROVED</p> <p>UNDERGROUND STRUCTURES COMMITTEE</p> <p>APPROVED BY</p> <p>TRAFFIC SIGNALS ENGINEER</p> <p>RELEASED FOR CONSTRUCTION</p> <p>MANAGER OF STREETS &amp; TRAFFIC</p> <p>DESIGNED BY</p> <p>DRAWN BY <i>AW</i> 88-03-01 PRELIM. CHK. DATE</p>		<p>DEC. 11, 1987</p> <p>C. P. J. KUMMEN</p> <p>REGISTERED ENGINEER</p>	<p>THE CITY OF WINNIPEG</p> <p>WORKS &amp; OPERATIONS DIVISION</p> <p>STREETS &amp; TRANSPORTATION DEPARTMENT</p> <p>INTERNALLY ILLUMINATED</p> <p>24" x 30" KEEP RIGHT SIGN</p> <p>DETAIL DRAWING</p> <p>SCALE As Shown</p> <p>DRAWING NO. M-537</p> <p>2 of 2</p>
<p>1 95-04-19 ADDED SPECIAL NOTE, &amp; CHANGED WIRE WAY DEPTH</p> <p>NO. DATE REVISIONS</p>		<p>BY</p> <p>DATE</p>	<p>CHECKED BY</p> <p>DATE</p>

M-537  
2 of 2