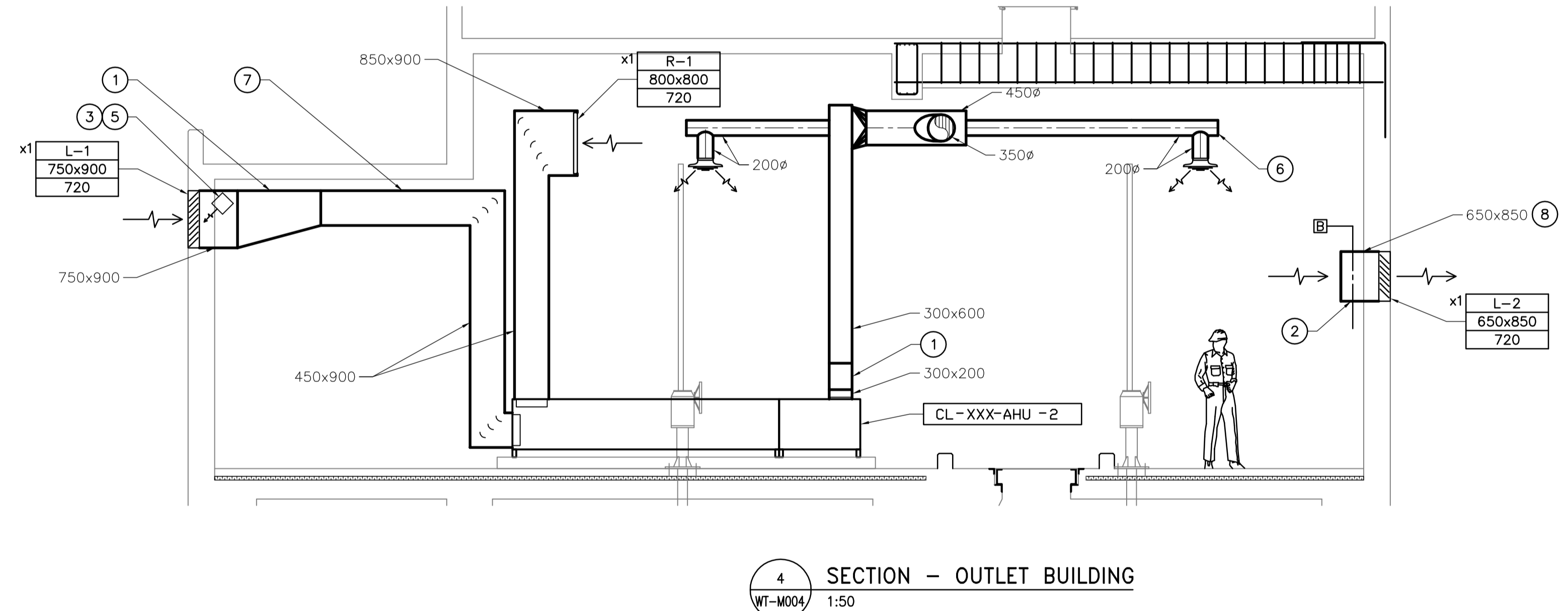
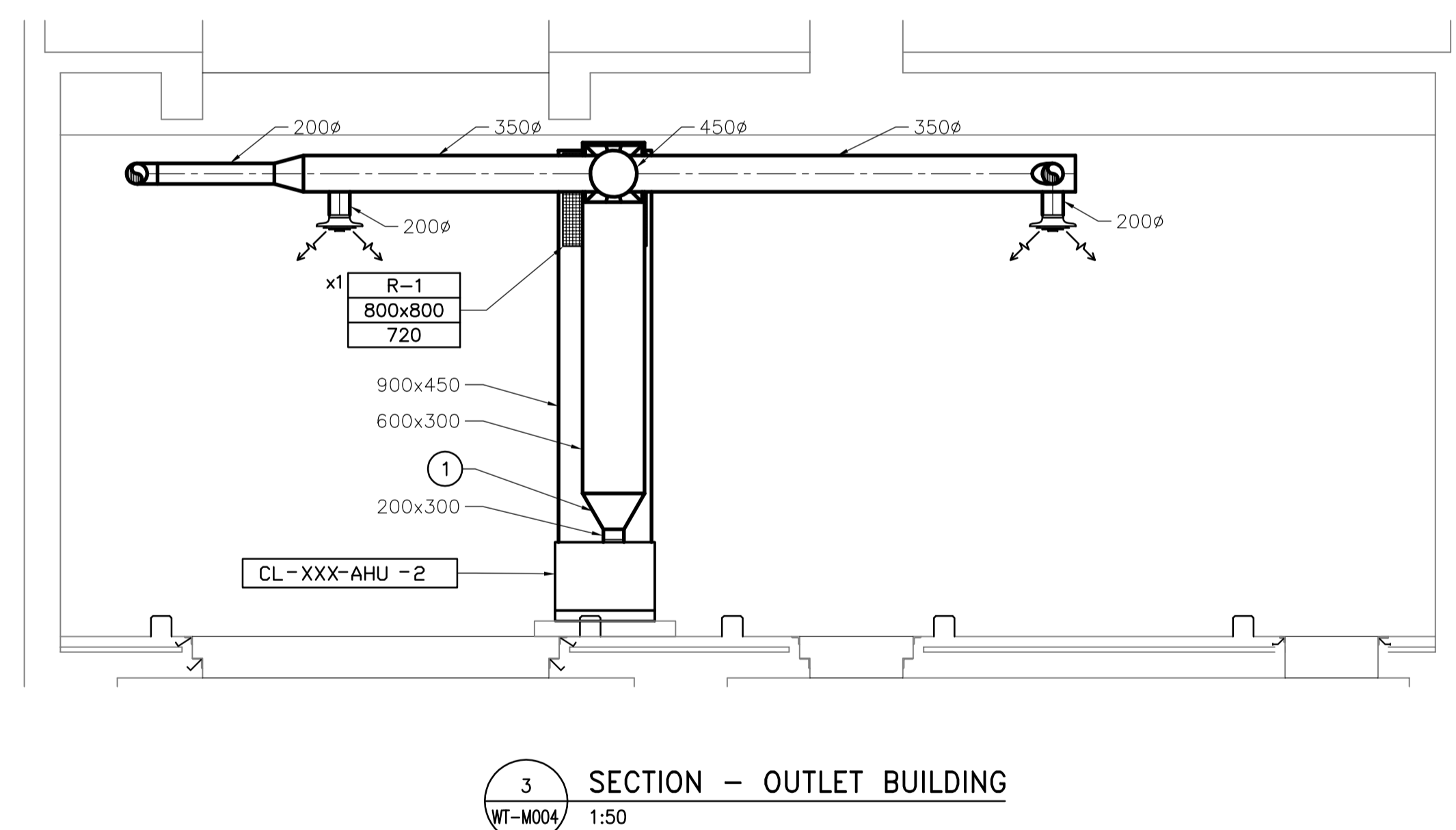


1 SECTION - INLET BUILDING
WT-M004 1:50

2 SECTION - INLET BUILDING
WT-M004 1:50



3 SECTION - OUTLET BUILDING
WT-M004 1:50

4 SECTION - OUTLET BUILDING
WT-M004 1:50

DRAWING NOTES

- 1 PROVIDE PROPER DUCT TRANSITION PIECE.
- 2 UNDERSIDE OF DUCT SHALL BE MINIMUM 2200mm ABOVE INSIDE FLOOR LEVEL TO ALLOW PROPER HEAD CLEARANCE.
- 3 PROVIDE 'CALORITECH' OKA TYPE R HAIRPIN TUBE ELEMENT INFRARED HEATER, THE UNITS ARE TO BE INSTALLED AND CONTROLLED TO MINIMIZE FROSTING OF THE AIR INLET SCREEN. THE UNITS ARE TO BE BRACKET MOUNTED INTO THE TOP INSIDE OF THE O/A DUCT. CHAIN MOUNTING OF THE UNITS WILL NOT BE ALLOWED.
- 4 INFRARED HEATER MOUNTED INSIDE DUCT. MODEL NUMBER OKA474H6R. UNIT OUTPUT TO BE 4.2-KW AT 600V, 3ø, 60 Hz.
- 5 INFRARED HEATER MOUNTED INSIDE DUCT. MODEL NUMBER OKA292H6R. UNIT OUTPUT TO BE 2.5-KW AT 600V, 3ø, 60 Hz.
- 6 CUSHION HEAD TEE. TYPICAL.
- 7 ENTIRE O/A DUCT SHALL BE THERMALLY INSULATED FROM THE WALL UP TO AHU.
- 8 ENTIRE RELIEF AIR DUCT SHALL BE THERMALLY INSULATED.

GENERAL NOTES

- 1. COORDINATE WITH OTHER TRADES SO AS TO PREVENT CONFLICTS.
- 2.

FOR INFORMATION ONLY - NOT IN CONTRACT

(EXCEPT AS NOTED)

B.M. ELEV.	CH2M HILL Frederickson Cooper ARCHITECTS	EarthTech A Trane International Ltd. Company	ENGINEER'S SEAL	THE CITY OF WINNIPEG WATER AND WASTE DEPARTMENT ENGINEERING DIVISION	CITY FILE NUMBER
	DESIGNED BY: DC	CHECKED BY:		WATER TREATMENT PLANT CLEARWELL CONSTRUCTION	SHEET OF
	DRAWN BY: DC	APPROVED BY:			CITY DRAWING NUMBER
	HOR. SCALE: 1:50	RELEASED FOR CONSTRUCTION BY:		MECHANICAL VENTILATION SECTIONS	
	VERTICAL SCALE: 1:50	DATE: 2005/03/15			
00 ISSUED FOR TENDER (N.I.C.) 05/04/17 DC			CONSULTANT DRAWING NO. WT-M004		
NO. REVISIONS	DATE	BY			