



INSTALL INTERNAL COMPRESSION SEALS IN EXISTING CELL 1 OUTLET LINE AS DIRECTED  
LOCATION OR EXISTENCE OF LEAKS UNKNOWN AT THIS TIME

APPROX LIMIT OF EX TRACK REMOVAL TRACK TO BE REMOVED (BY OTHERS)

INTERIM SITE GRADES

FUTURE ROADWAY

CLEARWELL

DEWATERING FACILITY

PROPOSED CLEARWELL (N.I.C.)

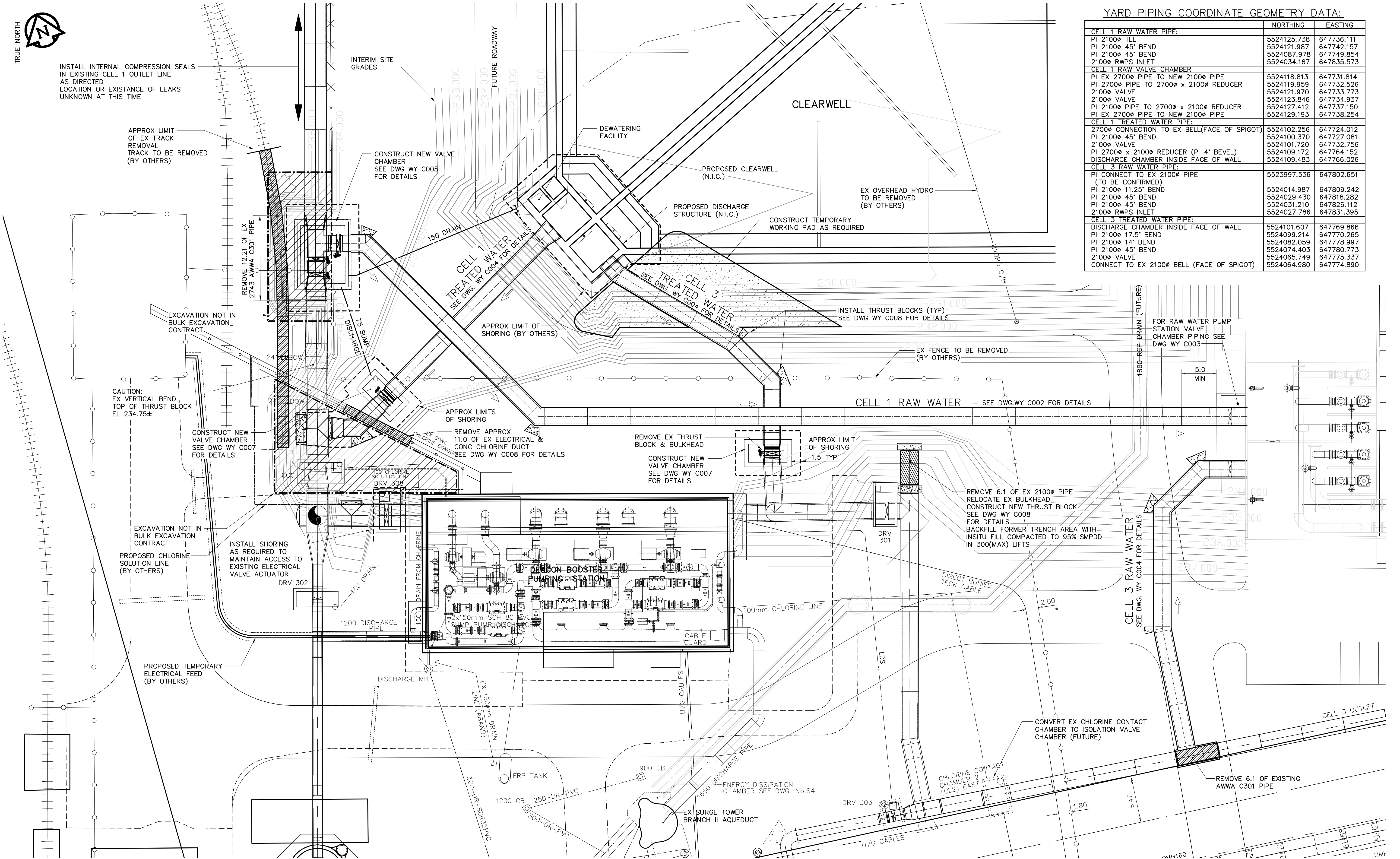
EX OVERHEAD HYDRO TO BE REMOVED (BY OTHERS)

PROPOSED DISCHARGE STRUCTURE (N.I.C.)

CONSTRUCT TEMPORARY WORKING PAD AS REQUIRED

YARD PIPING COORDINATE GEOMETRY DATA:

	NORTHING	EASTING
<b>CELL 1 RAW WATER PIPE:</b>		
PI 2100# TEE	5524125.738	647736.111
PI 2100# 45° BEND	5524121.987	647742.157
PI 2100# 45° BEND	5524087.978	647749.854
2100# RWPS INLET	5524034.167	647835.573
<b>CELL 1 RAW VALVE CHAMBER</b>		
PI EX 2700# PIPE TO NEW 2100# PIPE	5524118.813	647731.814
PI 2700# PIPE TO 2700# x 2100# REDUCER	5524119.959	647732.526
2100# VALVE	5524121.970	647733.773
2100# VALVE	5524123.846	647734.937
PI 2100# PIPE TO 2700# x 2100# REDUCER	5524127.412	647737.150
PI EX 2700# PIPE TO NEW 2100# PIPE	5524129.193	647738.254
<b>CELL 1 TREATED WATER PIPE:</b>		
2700# CONNECTION TO EX BELL(FACE OF SPIGOT)	5524102.256	647724.012
PI 2100# 45° BEND	5524100.370	647727.081
2100# VALVE	5524101.720	647732.756
PI 2700# x 2100# REDUCER (PI 4° BEVEL)	5524109.172	647764.152
DISCHARGE CHAMBER INSIDE FACE OF WALL	5524109.483	647766.026
<b>CELL 3 RAW WATER PIPE:</b>		
PI CONNECT TO EX 2100# PIPE (TO BE CONFIRMED)	5523997.536	647802.651
PI 2100# 11.25° BEND	5524014.987	647809.242
PI 2100# 45° BEND	5524029.430	647818.282
PI 2100# 45° BEND	5524031.210	647826.112
2100# RWPS INLET	5524027.786	647831.395
<b>CELL 3 TREATED WATER PIPE:</b>		
DISCHARGE CHAMBER INSIDE FACE OF WALL	5524101.607	647769.866
PI 2100# 17.5° BEND	5524099.214	647770.265
PI 2100# 14° BEND	5524082.059	647778.997
PI 2100# 45° BEND	5524074.403	647780.773
2100# VALVE	5524065.749	647775.337
CONNECT TO EX 2100# BELL (FACE OF SPIGOT)	5524064.980	647774.890



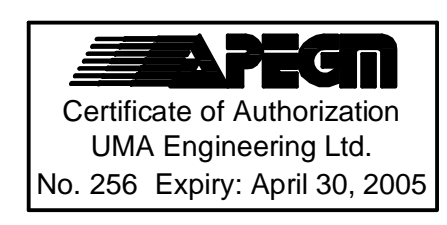
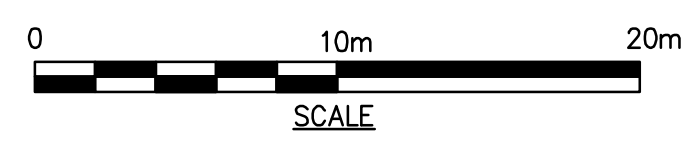
SITE CONSTRUCTION NOTES:

- BULK EXCAVATION WILL BE COMPLETED PRIOR TO CONSTRUCTION (BY OTHERS).
- CLEARWELL BASE GRADE WILL BE EXCAVATED TO 230.00m±. WORK PADS AND FILL PLACED FOR CONSTRUCTION OF YARD PIPING SHALL BE REMOVED UPON COMPLETION OF CONSTRUCTION
- COORDINATE CONSTRUCTION ACTIVITIES IN DISCHARGE STRUCTURE WITH CONCRETE CONTRACTOR.
- CONFIRM DECOMMISSIONING OF HYDRO ELECTRICAL FEED & CHLORINE FEED PRIOR TO DEMOLITION OF HYDRO/CHLORINE DUCT.

BENCHMARK NOTES:

DRAWING COORDINATES ARE UTM NAD83 - SCALE FACTOR 0.99983

B.M. No.	NORTHING	EASTING	ELEVATION
PILE 136	5523873.734	647764.406	236.242
PILE 133	5523256.606	647782.387	236.056



B.M. ELEV.		DESIGNED BY		CHECKED BY		APPROVED BY	
		MGM		CCM		Bryan Weber	
0	ISSUED FOR TENDER	05/04/14	WJd	HORIZONTAL SCALE: 1:250		RELEASED FOR CONSTRUCTION BY:	
A	ISSUED FOR REVIEW	05/04/06	WJd	VERTICAL SCALE: -		R. A. Sorokowski	
NO.	REVISIONS	DATE	BY	DATE	2005/03/22	DATE	April 17, 2005

ENGINEER'S SEAL  
ORIGINAL SIGNED BY  
**C. C. MACEY**  
2005/04/17  
CONSULTANT DRAWING NO.  
WY C001

**THE CITY OF WINNIPEG**  
WATER AND WASTE DEPARTMENT  
ENGINEERING DIVISION

WINNIPEG WATER TREATMENT PROGRAM  
CONSTRUCTION OF YARD PIPING AND VALVE CHAMBERS

CIVIL  
YARD PIPING - SITE PLAN  
PLAN & COORDINATE GEOMETRY

CITY FILE NUMBER  
SHEET 1 OF 1  
CITY DRAWING NUMBER  
1-0601Y-C-C0001-001-000