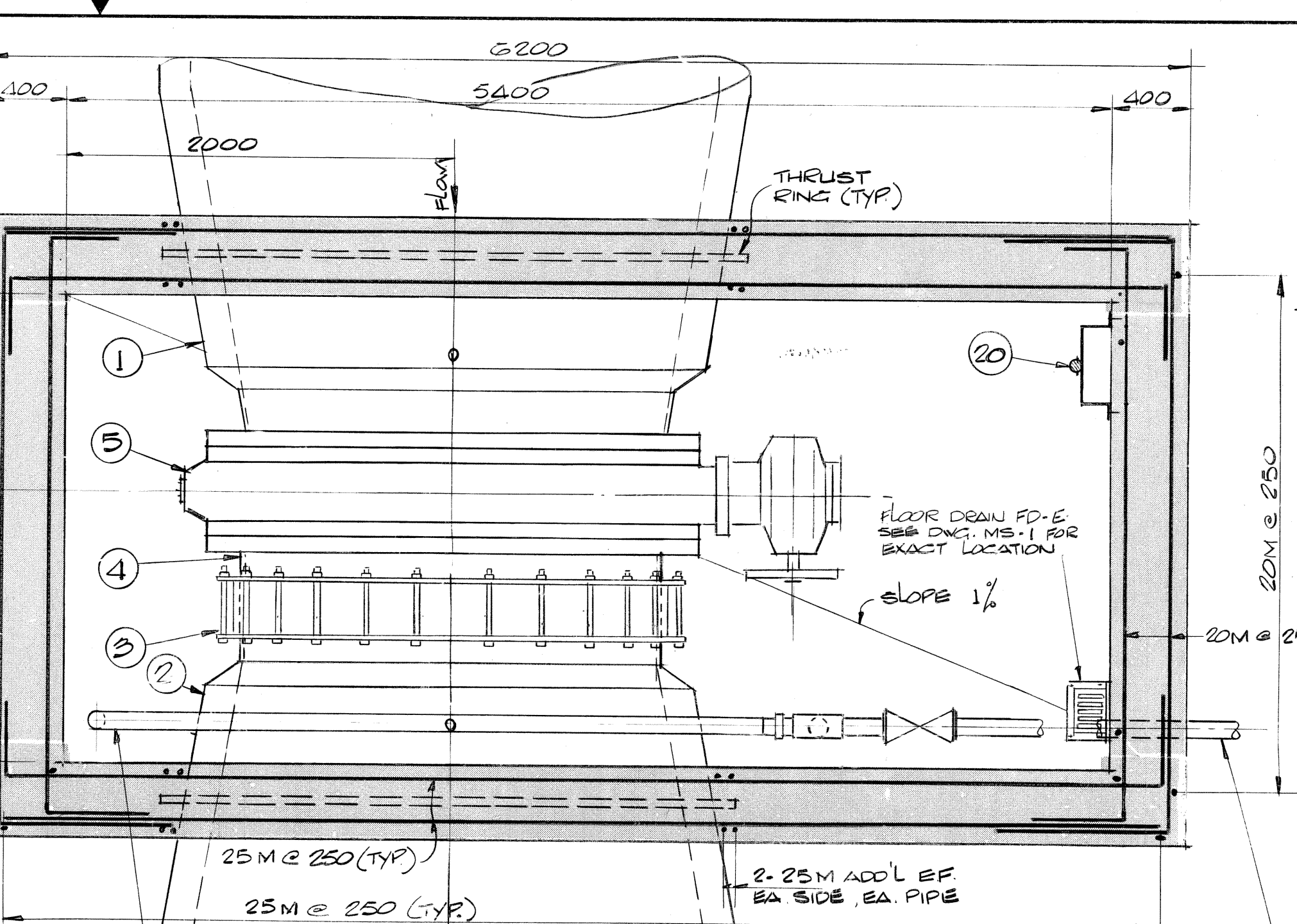
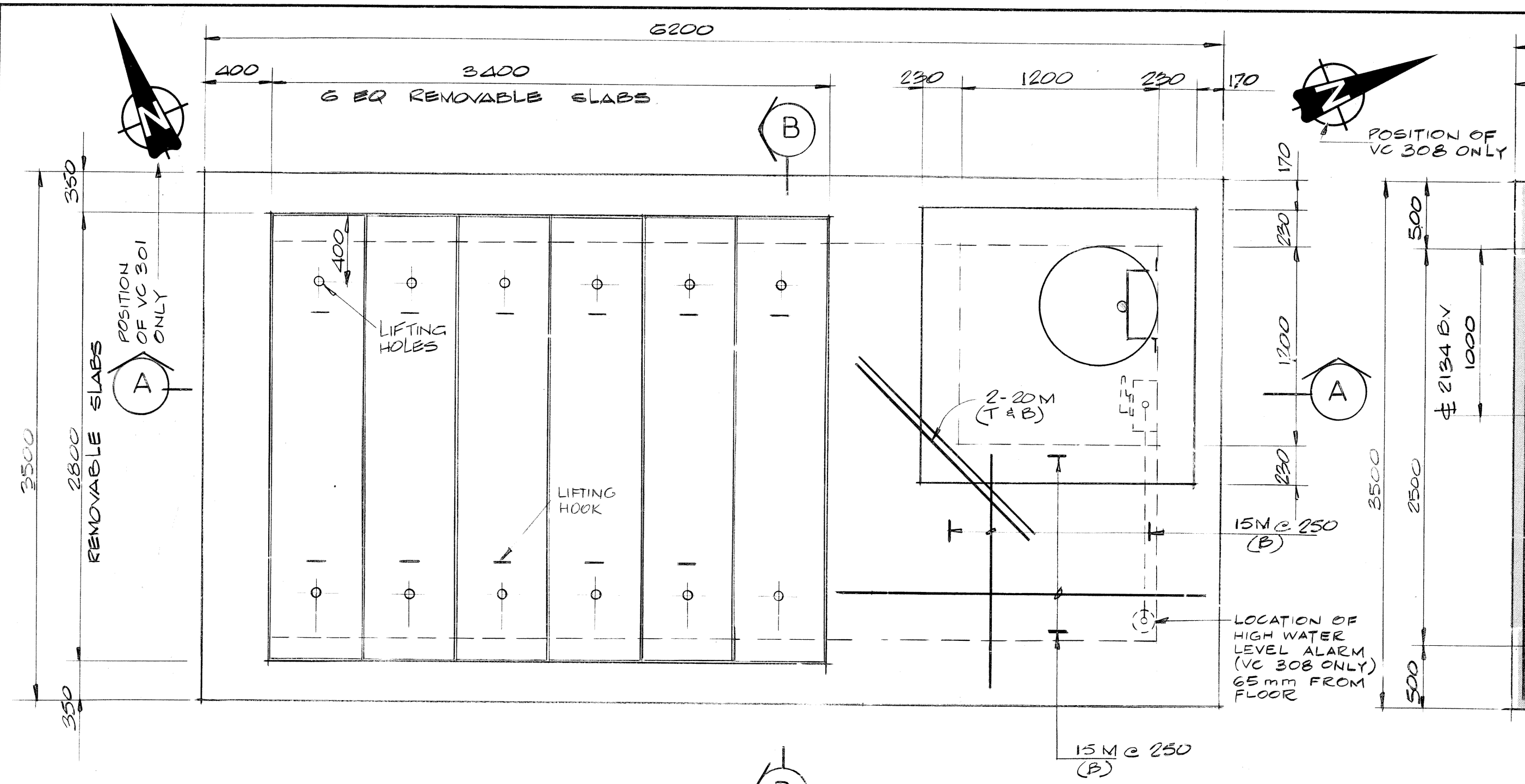


10 DBP-72



MATERIAL LIST	
MARK NO.	DESCRIPTION
1.	1- 2743 x 2134 PRESTRESSED CONC. ECCENTRIC REDUCER. (SCREWED TO FLANGED ENDS)
2.	1- 2743 x 2134 PRESTRESSED CONC. ECCENTRIC REDUCER (FLAN END TO SPOOT.) TWO WITH FOUR 76mm φ NOZZLES (W/ VC-301 & VC-308)
3.	1- 2134 φ DRESSER COUPLING, STYLE # 51
4.	1- 2134 φ STEEL PIPE FILLER 450 LONG. (FLANGED TO FLAN END)
5.	1- 2134 φ BUTTERFLY VALVE
6.	2- 51 φ STEEL OUTLET FLANGED
GA	1- 39 φ
GB	1- 51 φ TO 39 φ REDUCER
7.	2- 51 φ THREADED FLANGE
8.	2- 51 φ BRONZE NIPPLE - THREADED.
9.	2- 51 φ BRONZE GATE VALVE - THREADED.
10.	2- 51 φ 30° ELBOW - THREADED & GALVANIZED.
11.	2- 76 φ STEEL OUTLET - FLANGED.
12.	(NOT APPLICABLE)
13.	2- 76 φ BRONZE NIPPLE - THREADED
14.	2- 76 φ BRONZE GATE VALVE - FLANGED
15.	(NOT APPLICABLE)
16.	1 PAIR ADJUSTABLE BUTTERFLY VALVE SUPPORTS.
18.	MAXIMUM 2 ROWS CONC. BRICKS.
19.	1- STD. CITY OF WINNIPEG WATERWORKS MANHOLE FRAME & SOLID COVER.
20.	REMOVABLE LADDER WITH "SAF-T-CLIMB" FALL PREVENTION DEVICE OR APPROVED EQUIV. (SEE ALSO DWG. P. 8)

* MARK NOS. G, GA, GB, 7, 8, 9 & 10 - ONE ONLY OF EACH REQUIRED IN VC-201 (ON MARK NO. 1 REDUCER)

+ MARK NO. 2 - FOR VC-301 & VC-308 TO BE SUPPLIED WITH FOUR 76mm φ FLANGED NOZZLES DIAGONALLY POSITIONED AS SHOWN ON DWG. M12 PROVIDE 4-76mm BLIND FLANGES (VC-308)

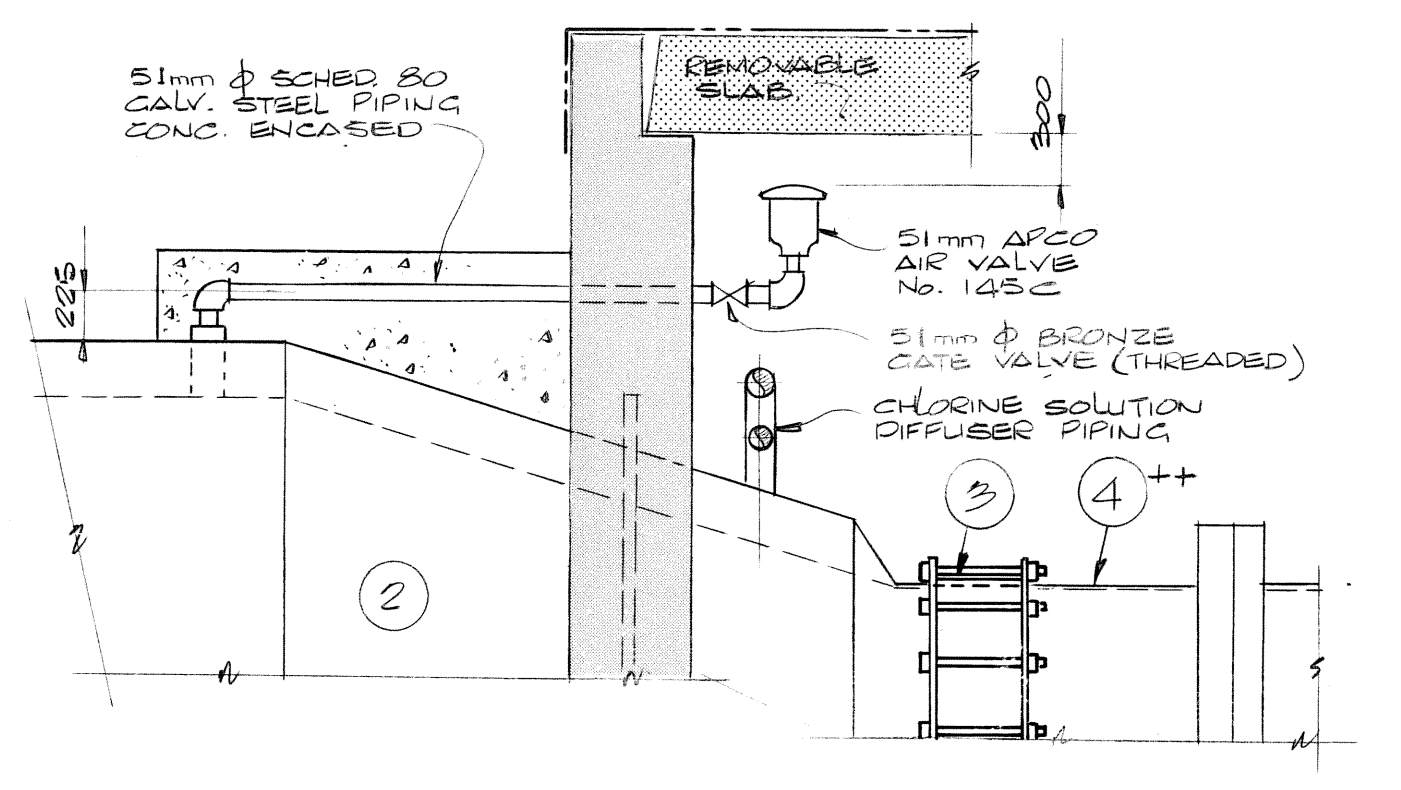
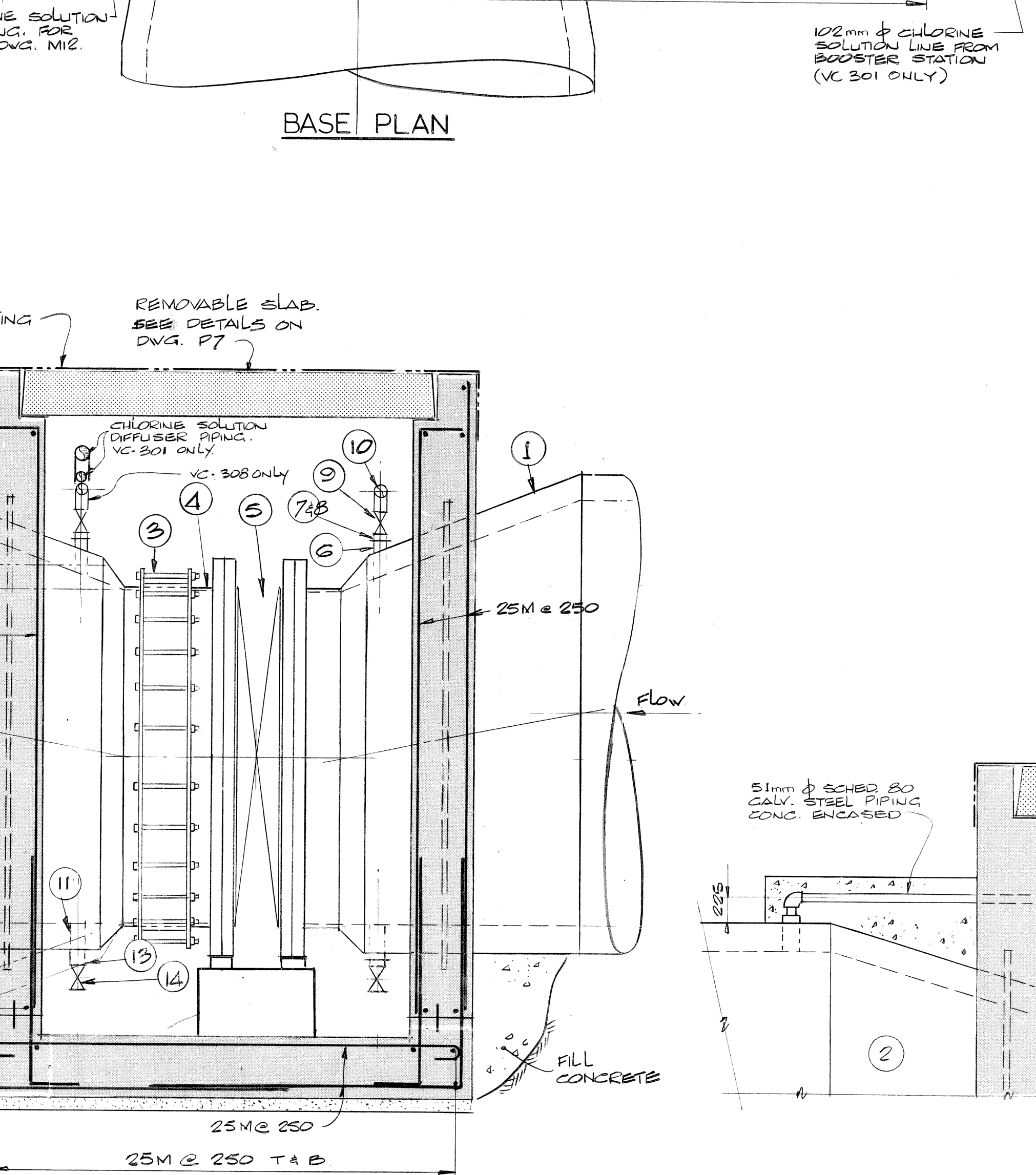
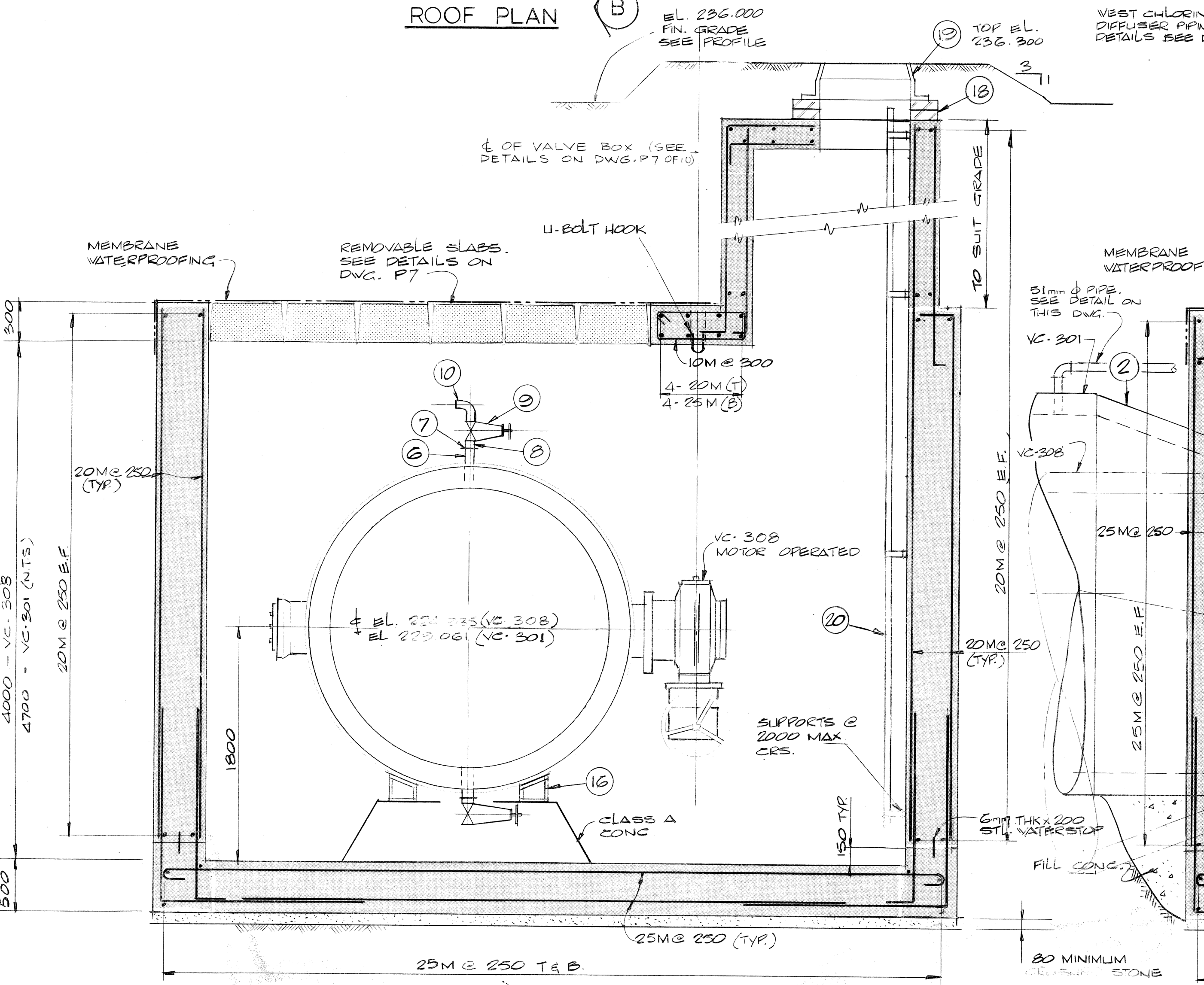
++ MARK NO. 4 - FOR VC-301 ONLY TO BE EXTRA LONG, 285mm, SINCE NO 2135 BV (MARK (5)) TO BE INSTALLED.

NOTES

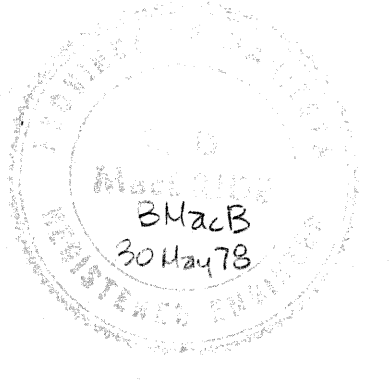
1. FOR GENERAL NOTES SEE DWG. P7

2. FOR LOCATION AND ORIENTATION SEE DWG. P4

3. FOR WALL REINFORCING AROUND PIPE, SEE DWG. P7



AS BUILT



CONSULTANT	CENTRAL FILE	ENGINEERING OFFICE	SHEET NO.	DATE FILMED
DIVISION OF UTILITY ENGINEERING OFFICE				
DRAWING FILE NUMBER				
GRID CO-ORDINATES MICROFILMING	WORKS & OPERATIONS DEPARTMENT			

REV.	DESCRIPTION	BY	DATE
1	REVISED TO AS BUILT	RFJ	SEP 80

JAMES F. MACLAREN LIMITED
CONSULTING ENGINEERS, PLANNERS AND SCIENTISTS
WINNIPEG · LONDON · WINDSOR · WATERLOO · TORONTO

DRAWN BY: *SJS*
DESIGNED BY: *BMacB*
CHECKED BY: *RFJ*
APPROVED BY: _____ DATE _____

THE CITY OF WINNIPEG
WATERWORKS, WASTE AND DISPOSAL DIVISION
DEACON BOOSTER PUMPING STATION

PROJECT

VALVE CHAMBERS Nos. VC-301 & VC-308

DIMENSIONS IN MILLIMETRES EXCEPT AS NOTED

SCALE: 1:25
DATE: MAY 30, 1978
CONSULTANT DRAWING No. P9 of 10
CITY DRAWING No. DBP-72