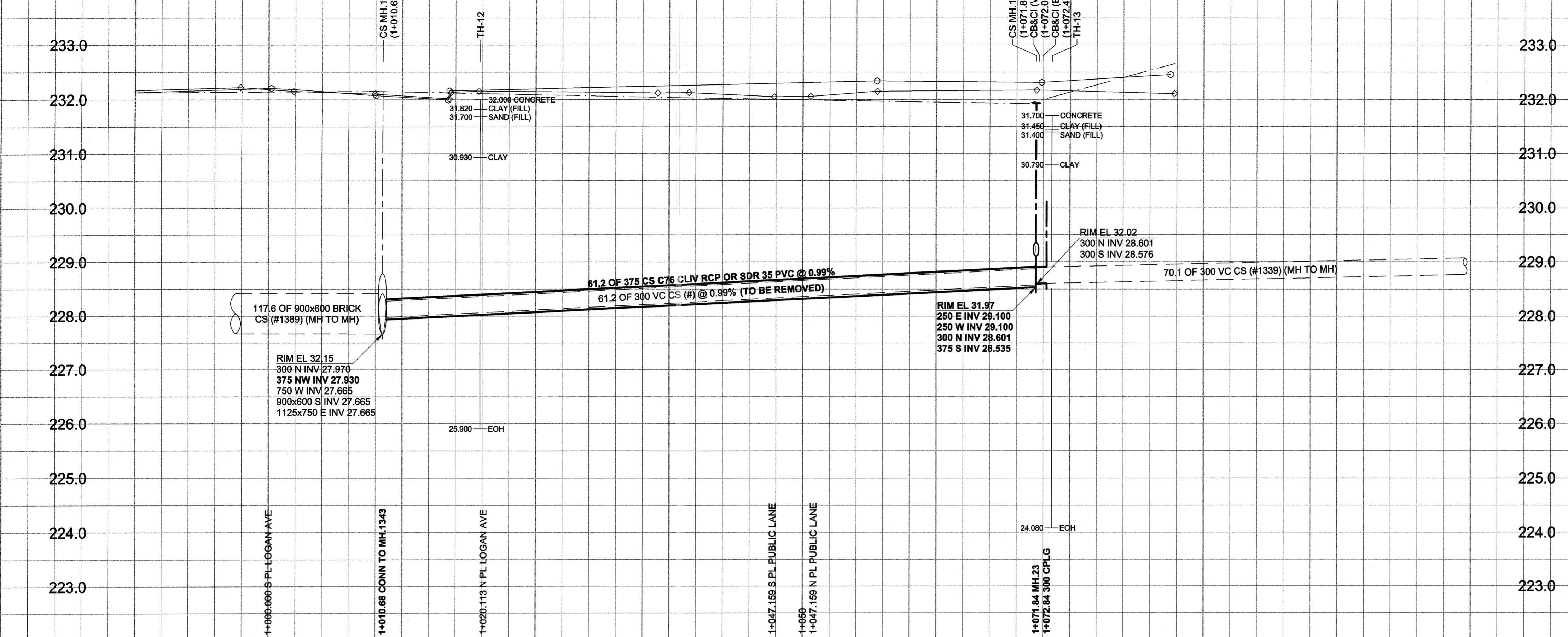
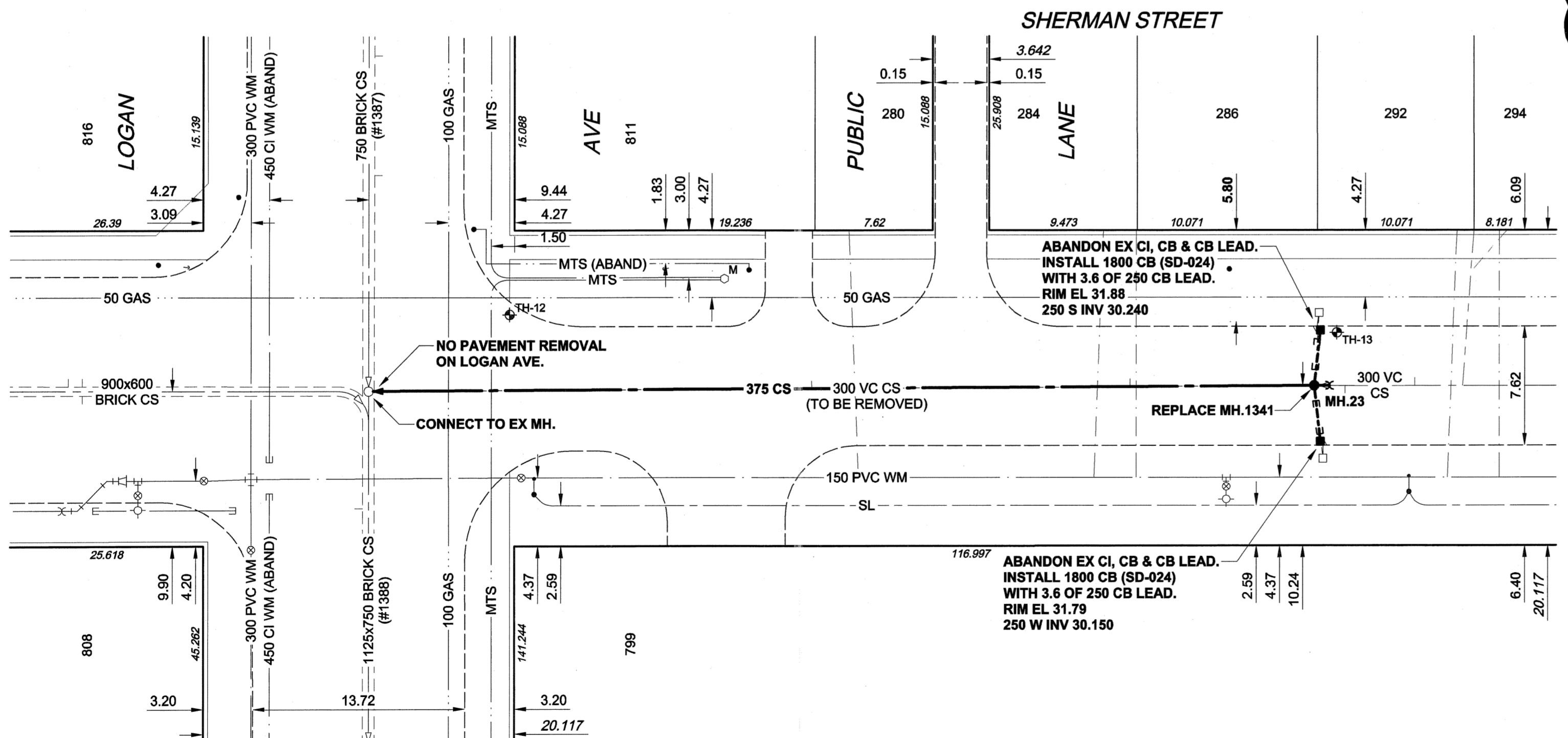


D SIZE 22" x 34" (559mm x 864mm)  
 PLOT: 05/05/26 10:37:39 AM  
 UMA FILE NAME: D265-177-01\_02-C-1015\_RX.dwg Saved By: atelpj

**EXISTING FEATURES**



**CHAINAGE ALONG E PL**



**SEWER SERVICE INFORMATION**

ADDRESS	PL TIE (SHORT/LONG)	JUNCTION TIE	REMARKS
280 SHERMAN		28.96 N OF MH AT LOGAN	
284 SHERMAN		49.07 N OF MH AT LOGAN	
286 SHERMAN	7.62 NSL LOT		
292 SHERMAN	ON N/L OF LOT	9.75 N OF 1 MH N OF LOGAN DBLE WITH #294 WYE 3.35m FROM PL	
294 SHERMAN	6.10 SNL LOT	9.75 N OF 1 MH N OF LOGAN DBLE WITH #292 WYE 3.35m FROM PL	
285 TECUMSEH			NO INFO
297 TECUMSEH			NO INFO

**WATER SERVICE INFORMATION**

ADDRESS	DISTANCE PROPERTY & TYPE	SIZE (mm)	SHORT & LONG MEASUREMENT	CORPORATION LOCATION	REMARKS
280 SHERMAN (RESIDENTIAL)	15.85	19	0.61 SSL HOUSE	0.61 N OF SC	
284 SHERMAN (RESIDENTIAL)	15.24	19	0.91 NNL HOUSE	0.61 S OF SC	
286 SHERMAN (RESIDENTIAL)	15.24	19	2.44 SSL HOUSE	OPP SC	
292 SHERMAN (RESIDENTIAL)	15.85	19	0.46 SNL HOUSE	0.61 S OF SC	
294 SHERMAN (RESIDENTIAL)	15.70	19	0.91 NSL HOUSE	OPP SC	FORMLY BRANCH SERV OF #292 NOW SGLE. CPLG 2.56 S OF SC.

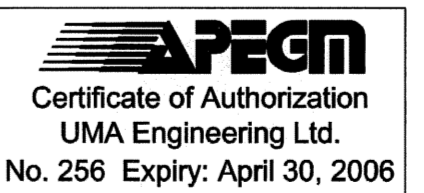
- CONSTRUCTION NOTES:**
- FOR DETAILED TEST HOLE INFORMATION, SEE SPECIFICATION.
  - THE LOCATION OF ALL SERVICES IS TO BE CONFIRMED IN THE FIELD.
  - INSTALL NEW SEWERS AND CATCHBASIN LEADS BY TRENCHLESS METHODS WHEREVER POSSIBLE.
  - RENEW/REHABILITATE CATCHBASINS & RENEW CATCHBASIN LEADS WHERE NOTED.
  - RENEW SEWER SERVICES TO PROPERTY LINE.

**WARNING**  
 IF POWER EQUIPMENT OR EXPLOSIVES ARE TO BE USED FOR EXCAVATION ON THIS PROJECT, THE CONTRACTOR MUST:  
 1) NOTIFY THE GAS COMPANY OF THE PROPOSED LOCATION OF EXCAVATION.  
 2) TAKE PRECAUTION TO AVOID DAMAGE TO GAS COMPANY INSTALLATIONS.  
 SEE PROVINCIAL REGULATION 140/92 FOR DETAILS

150 mm WM	WATERMAIN	150 mm WM	EXISTING	CURB STOP	NEW	150 mm WM	WATERMAIN	150 mm WM	EXISTING	LEGEND - PROFILE	NEW
⊕	HYDRANT	⊕	⊕	REDUCER	⊕	⊕	HYDRANT	⊕	⊕	⊕	⊕
⊕	VALVE	⊕	⊕	COUPLING	⊕	⊕	VALVE	⊕	⊕	⊕	⊕
⊕	LAND DRAINAGE SEWER	⊕	⊕	ANODE	⊕	⊕	LAND DRAINAGE SEWER	⊕	⊕	⊕	⊕
⊕	WASTE WATER SEWER	⊕	⊕	HYDRO	⊕	⊕	WASTE WATER SEWER	⊕	⊕	⊕	⊕
○	MANHOLE	○	○	MTS	○	○	PAVEMENT CROWN	○	○	○	○
□	CATCH BASIN	□	□	GAS	□	□	N/W PROPERTY LINE	□	□	□	□
△	CURB INLET	△	△	TESTHOLE	△	△	S/E PROPERTY LINE	△	△	△	△
⊔	CULVERT	⊔	⊔	LAMP STANDARD	⊔	⊔	N/W GUTTER	⊔	⊔	⊔	⊔
⊔	PIPE ABANDONMENTS	⊔	⊔	TREE	⊔	⊔	S/E GUTTER	⊔	⊔	⊔	⊔
⊕	SURVEY BAR	⊕	⊕		⊕	⊕		⊕	⊕	⊕	⊕
⊕	EXISTING	⊕	⊕	LEGEND - PLAN	⊕	⊕	LEGEND - PROFILE	⊕	⊕	⊕	⊕

**LOCATION APPROVED**  
 UNDERGROUND STRUCTURES  
 SUPR. U/G STRUCTURES COMMITTEE DATE \_\_\_\_\_  
 NOTE:  
 LOCATION OF UNDERGROUND STRUCTURES AS SHOWN ARE BASED ON THE BEST INFORMATION AVAILABLE. BUT NO GUARANTEE IS GIVEN THAT ALL EXISTING UTILITIES ARE SHOWN OR THAT THE GIVEN LOCATIONS ARE EXACT. CONFIRMATION OF EXISTENCE AND EXACT LOCATION OF ALL SERVICES MUST BE OBTAINED FROM THE INDIVIDUAL UTILITIES BEFORE PROCEEDING WITH CONSTRUCTION.

BM 36-009 ELEV 232.501m	Tht. in W. wall of the City of Winnipeg Public Works Shop, S.E. Cor. of Pacific Ave. & Tecumseth St., 0.8m S. of N.W. Cor. of Bldg.
DESIGNED BY	GEB/MM
CHECKED BY	[Signature]
DRAWN BY	ADL
APPROVED BY	[Signature]
HOR. SCALE	1:250
VERT. SCALE	1:50
RELEASED FOR CONSTRUCTION	[Signature]
ISSUED FOR CONSTRUCTION	05/05/26 ADL
NO. REVISIONS	YY/MM/DD BY
DATE	05/05/27



**UMA AECOM**  
 2005 UMA ENGINEERING LTD. ALL RIGHTS RESERVED.  
 DESIGNED BY GEB/MM  
 CHECKED BY [Signature]  
 DRAWN BY ADL  
 APPROVED BY [Signature]  
 HOR. SCALE 1:250  
 VERT. SCALE 1:50  
 RELEASED FOR CONSTRUCTION [Signature]  
 CONSULTANT DRAWING NO. 15  
 D265-177-01-02

**THE CITY OF WINNIPEG WATER AND WASTE DEPARTMENT**  
**ALEXANDER/BANNATYNE COMBINED SEWER RELIEF CONTRACT 1B**  
 SHERMAN STREET  
 LOGAN AVENUE  
 TO 50m SOUTH OF HENRY AVENUE

SHEET 15 OF 18  
 CITY DRAWING NUMBER  
 REV 0  
**LD-3129**

BID OPPORTUNITY NO. 137-2005